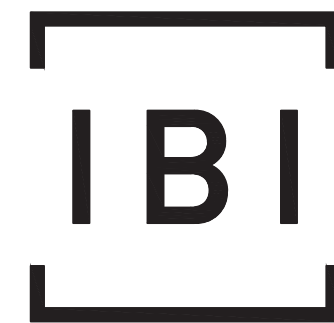
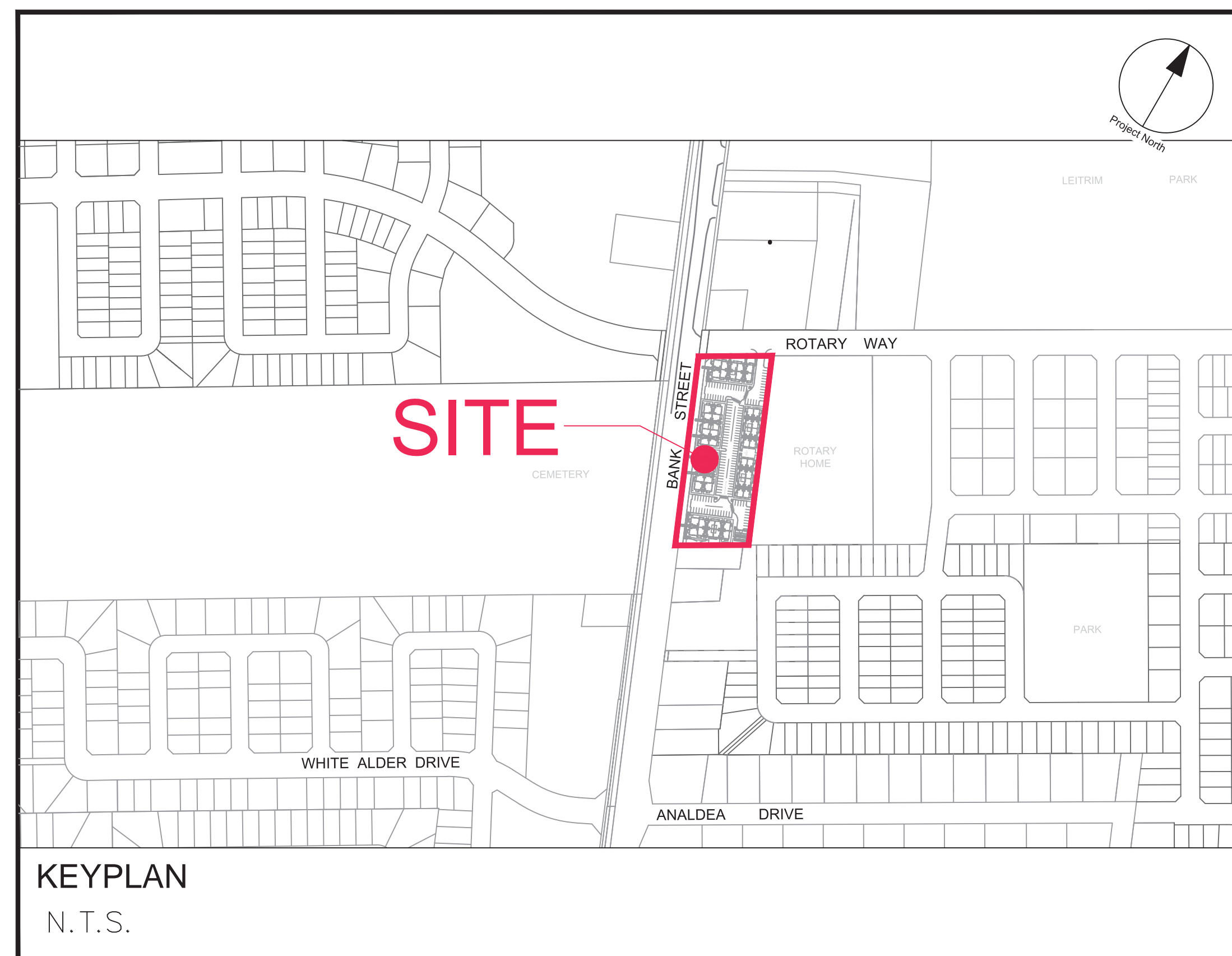


4639 BANK STREET GLENVIEW HOMES



IBI GROUP
400 – 333 Preston Street
Ottawa ON K1S 5N4 Canada
tel 613 225 1311 fax 613 225 9868
ibigroup.com

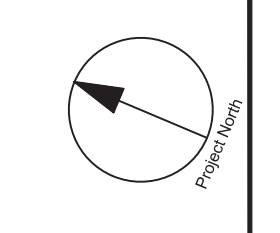


Sheet List Table	
Sheet Number	Sheet Title
-	COVER
C-001	GENERAL PLAN OF SERVICES
C-010	DETAILS AND NOTES
C-200	GRADING PLAN
C-400	SANITARY DRAINAGE AREA PLAN
C-500	STORM DRAINAGE AREA PLAN
C-900	EROSION AND SEDIMENTATION CONTROL PLAN



CONTRACT NO. 125600

ICD LOCATION (MH #)	RELEASE RATE (L/s)	HEAD (m)	ICD
8	8.57	2.68	Tempest MHF plate
9	13.97	2.93	Tempest MHF plate
10	11.78	2.96	Tempest MHF plate
11	30.72	2.86	Tempest MHF plate
12	15.93	2.95	Tempest MHF plate
13	18.20	3.01	Tempest MHF plate
14	9.64	2.80	Tempest MHF plate

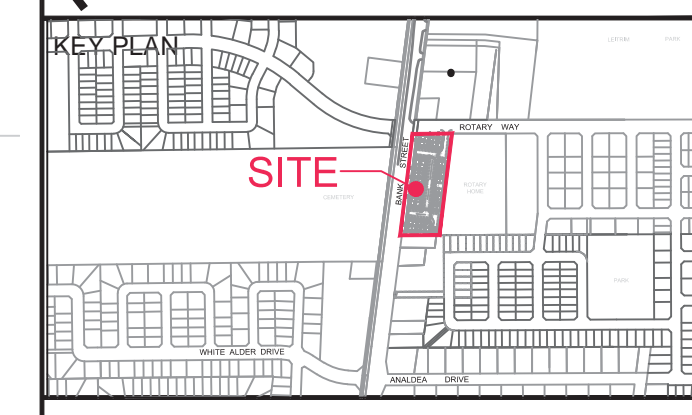


CLIENT
GLENVIEW HOMES
 190 O'Connor St., 11th floor, Ottawa, ON

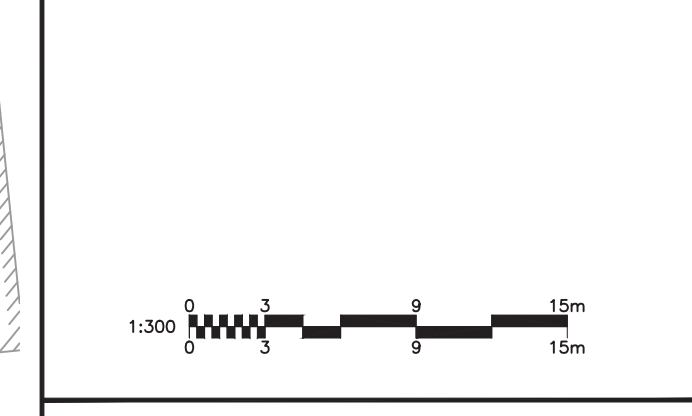
COPYRIGHT
 This drawing has been prepared solely for the intended use, any reproduction or distribution for any purpose other than authorized by IBI Group is forbidden. Written dimensions shall have precedence over scaled dimensions. Contractors shall verify and be responsible for all dimensions and conditions on the job, and IBI Group shall be informed of any variations from the dimensions and conditions shown on the drawing. Shop drawings shall be submitted to IBI Group for general concurrence before proceeding with fabrication.
 IBI Group Professional Services (Canada) Inc.
 is a member of the IBI Group of companies.

ISSUES

No.	DESCRIPTION	DATE
1	SUBMITTED FOR ZBA AND SPA	2020-08-26



CONSULTANTS
 Project Coordinator: Terrain Development Consulting
 Architect: M. David Blakely Architects Inc.
 Landscape: James B. Lennox & Assoc. Inc.
 Surveyor: J.D. Barnes Ltd.
 Geotech: Golder Associates Ltd.



SEAL

IBI GROUP
 Suite 400 - 333 Preston Street
 Ottawa, ON K1S 5N4 Canada
 Tel: 613 225 1311 / 613 241 3300 Fax: 613 225 9868
 ibigroup.com

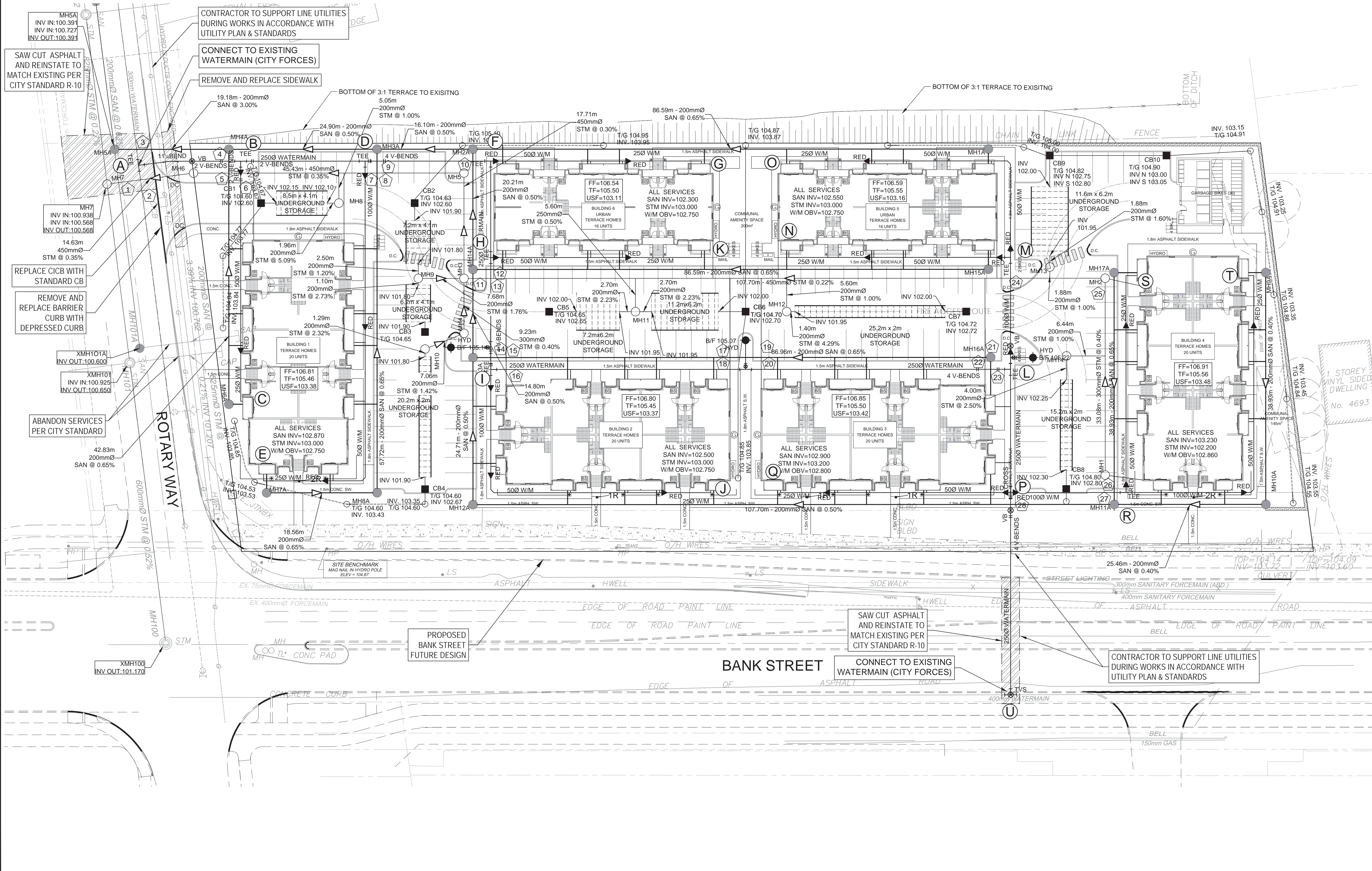
PROJECT
4639 BANK STREET
 4639 Bank Street

PROJECT NO:
 125600

DRAWN BY: D.D./E.H.	CHECKED BY: R.M.
PROJECT MGR: D.Y.	APPROVED BY: D.Y.

SHEET TITLE
GENERAL PLAN OF SERVICES

SHEET NUMBER C-001	ISSUE 1
------------------------------	-------------------



NOT FOR CONSTRUCTION

File Location: \\1125600_4639BankSt17_0_Production\7_02_Design\7_02_GeneralPlanOfServices.dwg Last Saved: August 26, 2020 12:03:05 PM by Eric Henrie

DRAWING NOTES

1.0 GENERAL

- 1.1 CONTRACTOR TO VERIFY ALL DIMENSIONS PRIOR TO CONSTRUCTION.
1.2 DO NOT SCALE DRAWINGS.
1.3 CONTRACTOR TO REPORT ALL DISCOVERIES OF ERRORS, OMISSIONS OR DISCREPANCIES TO THE ARCHITECT OR DESIGN ENGINEER AS APPLICABLE.
1.4 USE ONLY THE LATEST REVISED DRAWINGS OR THOSE THAT ARE MARKED 'ISSUED FOR CONSTRUCTION'.
1.5 ALL CONSTRUCTION SHALL COMPLY WITH CURRENT CITY OF OTTAWA STANDARDS AND SPECIFICATIONS.
1.6 THIS DRAWING SHALL BE READ IN CONJUNCTION WITH ALL RELEVANT DRAWINGS AND SPECIFICATIONS.
1.7 FOR LEGAL SURVEY INFORMATION REFER TO REGISTERED PLAN FROM J.D. BARNES LTD.
1.8 REFER TO SITE PLAN BY M. DAVID BLAKELY ARCHITECTS INC.
1.9 CONTRACTOR TO IMPLEMENT EROSION AND SEDIMENT CONTROL MEASURES AS IDENTIFIED IN THE EROSION AND SEDIMENT CONTROL PLAN TO THE SATISFACTION OF THE CITY OF OTTAWA. PRIOR TO UNDERTAKING ANY SITE ALTERATIONS (FILLING, REMOVAL OF VEGETATION, ETC.), DURING ALL PHASES OF THE SITE PREPARATION AND CONSTRUCTION THE MEASURES ARE TO BE MAINTAINED TO THE SATISFACTION OF THE ENGINEER AND CITY OF OTTAWA IN ACCORDANCE WITH THE BEST MANAGEMENT PRACTICES FOR EROSION AND SEDIMENT CONTROL. SHOULD ANY ADDITIONAL MEASURES BE REQUIRED TO ADDRESS FIELD CONDITIONS THEY SHALL BE INSTALLED AS DIRECTED BY THE ENGINEER OR THE CITY OF OTTAWA. SUCH ADDITIONAL MEASURES MAY INCLUDE BUT NOT BE LIMITED TO INSTALLATION OF SEDIMENT CAPTURE FILTER SOCKS WITHIN MANHOLES AND CATCHBASINS TO PREVENT SEDIMENT FROM ENTERING THE STRUCTURE AND INSTALLATION AND MAINTENANCE OF A LIGHT DUTY SILT FENCE BARRIER AS REQUIRED.
1.10 ALL IRON WORK ELEVATIONS SHOWN ARE APPROXIMATE AND ARE SUBJECT TO MINOR ADJUSTMENTS AS DETERMINED BY THE ENGINEER.
1.11 ALL CONCRETE CURBS AND SIDEWALKS TO CONFORM TO O.P.S. AND CONSTRUCTED TO CITY STANDARDS. ALL ON-SITE CURBS TO BE BARRIER TYPE, WITH DEPRESSIONS AS NOTED.
1.12 ALL CONCRETE SHALL BE NORMAL PORTLAND CEMENT IN ACCORDANCE WITH O.P.S.S. 1360 AND SHALL ACHIEVE A MINIMUM STRENGTH OF 30MPa AT 28 DAYS.
1.13 ALL CONSTRUCTION TRAFFIC TO ACCESS SITE FROM ROYAL WAY.
1.14 FOR GEOTECHNICAL REPORT TO SEE CITY OF OTTAWA INVESTIGATION BY GOLDER ASSOCIATES LTD.
1.15 CONTRACTOR TO PROTECT EXISTING INFRASTRUCTURE AND PROPERTY SUCH AS TREES, PARKING METERS, SIDEWALKS, CURBS, ASPHALT, AND STREET SIGNS FROM DAMAGE DURING CONSTRUCTION. CONTRACTOR TO PAY THE COST TO REINSTATE OR REPLACE ANY DAMAGED INFRASTRUCTURE OR PROPERTY TO THE SATISFACTION OF THE CITY.
1.16 THE POSITION OF POLE LINES, CONDUITS, WATERMAIN, SEWERS, AND OTHER UNDERGROUND AND ABOVEGROUND UTILITIES AND STRUCTURES ARE NOT NECESSARILY SHOWN ON THE CONTRACT DRAWINGS, AND WHERE SHOWN, THE ACCURACY OF THE POSITION OF SUCH UTILITIES AND STRUCTURES IS NOT GUARANTEED. BEFORE STARTING WORK THE CONTRACTOR SHALL INFORM ITSELF OF THE EXACT LOCATION OF ALL SUCH UTILITIES AND STRUCTURES, SHALL PROTECT ALL UTILITIES AND STRUCTURES, AND SHALL ASSUME ALL LIABILITY FOR DAMAGE TO THEM.
1.17 CONTRACTOR TO SUPPLY SUITABLE FILL MATERIAL WHERE REQUIRED TO ROUGH GRADE THE SITE. ALL IMPORTED FILL MATERIAL TO BE CERTIFIED AS ACCEPTABLE BY THE GEOTECHNICAL ENGINEER.
1.18 CONTRACTOR TO HAUL EXCESS MATERIAL OFFSITE AS NECESSARY TO GRADE SITE TO MEET THE PROPOSED GRADES. ALL EXCESS MATERIAL TO BE HAULED OFFSITE AND DISPOSED OF AT AN APPROVED DUMP SITE. SHOULD THE CONTRACTOR DISCOVER ANY HAZARDOUS MATERIAL, CONTRACTOR IS TO NOTIFY ENGINEER, ENGINEER TO DETERMINE APPROPRIATE DISPOSAL METHODOLOGY.
1.19 FILL MATERIAL WITHIN THE PARKING LOT AND BUILDING PAD AREAS, AND SUPPORTING BUILDING FOUNDATIONS SHALL BE COMPACTED TO 96% STANDARD MODIFIED PROCTOR DENSITY AND TO THE SATISFACTION OF THE GEOTECHNICAL ENGINEER.
1.20 ALL COMPACTION METHODS TO BE PERFORMED TO THE SATISFACTION OF THE GEOTECHNICAL ENGINEER TO INCLUDE BUT NOT BE LIMITED TO THE THICKNESS OF LIFTS, AND COMPACTION EQUIPMENT USED.
1.21 ALL DISTURBED BOULEVARDES TO BE REINSTATED WITH SOD ON 100mm TOPSOIL.
1.22 UTILITY DUCTS TO BE INSTALLED PRIOR TO ROAD BASE CONSTRUCTION.
1.23 CLAY DIKES TO BE INSTALLED WHERE INDICATED ON THE DRAWINGS OR AS APPROVED AND DIRECTED BY THE GEOTECHNICAL ENGINEER ALL IN ACCORDANCE WITH CITY OF OTTAWA STANDARDS AND SPECIFICATIONS.
1.24 BACKWATER VALVES, PER CITY STANDARDS S14, S14.1 AND S14.2 RE TO BE INSTALLED FOR ALL STORM AND SANITARY SERVICE CONNECTIONS.

2.0 SANITARY

- 2.1 ALL SANITARY SEWER MAINS TO BE CSA CERTIFIED, BELL AND SPIGOT TYPE. ONLY FACTORY FITTINGS TO BE USED. SEWER TO BE INSTALLED AS PER OPSD 1006.01. SANITARY SEWER MATERIALS TO BE 250mmØ AND SMALLER - PVC DR 35.
2.2 ALL SANITARY MAINTENANCE HOLES TO BE 1.2m DIAMETER AS PER CITY OF OTTAWA STANDARDS COMPLETE WITH BENCHING, RUNGS, FRAME AND COVER, DROP PIPES AND LANDINGS WHERE NEEDED.
2.3 SANITARY MANHOLE COVERS TO BE CITY OF OTTAWA STD. S25 (MOQ, OPSD, 401.020). SANITARY MANHOLE COVER TO BE CLOSED COVER TYPE, AS PER CITY STANDARD S24.
2.4 SANITARY SEWER LEAKAGE TEST AND CCTV INSPECTION SHALL BE COMPLETED AS PER CITY SPECIFICATIONS PRIOR TO INSTALLATION WITH SANITARY SEWER BASE COURSE ASPHALT.
2.5 ANY SANITARY SEWER WITH LESS THAN 2.0m COVER REQUIRES THERMAL INSULATION AS PER CITY OF OTTAWA STANDARD W22, OR AS APPROVED BY THE ENGINEER.
2.6 CONNECTION TO THE EXISTING SANITARY SEWER TO BE INCLUDED IN THE COST FOR SANITARY SEWER INSTALLATION. THIS INCLUDES REINSTATEMENT OF ROAD CUTS TO CITY STANDARDS.

3.0 STORM

- 3.1 ALL STORM SEWERS TO BE CSA CERTIFIED, BELL AND SPIGOT TYPE. ALL STORM SEWERS TO BE INSTALLED PER MANUFACTURER'S INSTRUCTIONS. ONLY FACTORY FITTINGS TO BE USED. STORM SEWER MATERIALS TO BE: 375mmØ AND SMALLER - PVC DR 35 - 450mmØ AND LARGER - 100-D REINFORCED CONCRETE. UNLESS NOTED OTHERWISE.
3.2 ALL STORM MAINTENANCE HOLES TO BE SIZED IN ACCORDANCE WITH THE PLANS AND AS PER CITY OF OTTAWA STANDARDS COMPLETE WITH BENCHING, RUNGS, AND FRAME AND COVER.
3.3 STORM MH COVERS TO BE OPEN TYPE, AS PER CITY STANDARD S24. FRAMES TO BE PER CITY OF OTTAWA STD. S25. CONTRACTOR TO INSTALL FILTER FABRIC UNDER STORM MH COVER UNTIL SODDING IS COMPLETE.
3.4 STORM MAINTENANCE HOLES TO BE OPSD, SIZE AS SPECIFIED, TAPER TOP.
3.5 ALL CATCH BASINS TO BE AS PER OPSD 705.010, FRAME & FISH TYPE GRATE AS PER CITY OF OTTAWA STD. S19.1.
3.6 3m x 150mm DIAMETER SOCK-WRAPPED PERFORATED PVC SUBDRAINS TO BE INSTALLED ALL C/S'S. TO EXTEND PARALLEL TO CURB IN CBS ADJACENT TO CURB AND IN 4 DIRECTIONS FOR CBS IN CENTER OF PARKING LOT. SUBDRAINS TO DISCHARGE TO CUB.
3.7 ANY STORM SEWER WITH LESS THAN 2.0m COVER REQUIRES THERMAL INSULATION AS PER CITY OF OTTAWA STANDARD W22, OR AS APPROVED BY THE ENGINEER.
3.8 CONNECTION TO THE EXISTING STORM SEWER TO BE INCLUDED IN THE COST FOR STORM SEWER INSTALLATION. THIS INCLUDES REINSTATEMENT OF ROAD CUT TO CITY STANDARDS.
3.9 CONTRACTOR TO PROVIDE IPEX-TEMPST MF ICDS SHOP DRAWINGS, OR EQUIVALENT, FOR ENGINEERS REVIEW PRIOR TO ORDERING ICDS.

4.0 WATER

- 4.1 ALL WATERMANS 100mmØ OR GREATER TO BE PVC DR 18, LESS THAN 100mmØ TO BE COPPER OR APPROVED EQUAL WITH MINIMUM COVER OF 2.4m AND INSTALLED PER CITY OF OTTAWA STANDARDS. ALL DOMESTIC WATER SERVICES ARE TO BE 25mmØ.
4.2 THRUST BLOCKS TO BE INSTALLED AT ALL BENDS, TEES, AND Caps ALL AS PER OPSD 1103.01 AND 1103.02.
4.3 CONTRACTOR TO CONDUCT PRESSURE AND LEAKAGE TESTING OF ALL WATERMANS AND DISINFECT AND CHLORINATE ALL WATERMANS TO THE SATISFACTION OF M.O.E. AND THE CITY OF OTTAWA.
4.4 TRACER WIRE TO BE INSTALLED ALONG THE FULL LENGTH OF WATERMAIN AND ATTACHED TO EACH MAJOR STOP AS PER CITY OF OTTAWA STANDARDS.
4.5 ALL COMPONENTS OF THE WATER DISTRIBUTION SYSTEM SHALL BE CATHODICALLY PROTECTED AS PER CITY OF OTTAWA STANDARDS.
4.6 ALL VALVES & VALVE BOXES AND CHAMBERS, HYDRANTS, AND HYDRANT VALVES AND ASSEMBLIES SHALL BE INSTALLED AS PER CITY OF OTTAWA STANDARDS.
4.7 ANY WATERMAIN WITH LESS THAN 2.4m COVER REQUIRES THERMAL INSULATION AS PER CITY OF OTTAWA STANDARD W22, OR AS APPROVED BY THE ENGINEER.
4.8 CONTRACTOR IS RESPONSIBLE FOR ACQUIRING THE WATER PERMIT FROM THE CITY OF OTTAWA AND PAYMENT OF ANY FEES ASSOCIATED WITH SECURING THE WATER PERMIT. OWNER IS RESPONSIBLE FOR REIMBURSING THE CONTRACTOR FOR THE ACTUAL COST OF ACQUIRING THE WATER PERMIT.
4.9 CONNECTION TO EXISTING WATERMAIN TO BE INCLUDED IN THE COST FOR THE WATERMAIN INSTALLATION. THIS COST INCLUDES REINSTATEMENT OF ROAD CUTS TO CITY STANDARDS.
4.10 ALL WATERMAIN CROSSINGS TO BE COMPLETED AS PER CITY OF OTTAWA STANDARDS W25 AND W25.2.

5.0 PARKING LOT AND WORK IN PUBLIC RIGHTS OF WAY

- 5.1 CONTRACTOR TO REINSTATE ROAD CUTS PER CITY OF OTTAWA STANDARD R-10.
5.2 THE CONTRACTOR SHALL PREPARE A TRAFFIC MANAGEMENT PLAN FOR REVIEW AND APPROVAL BY THE CITY OF OTTAWA. CONTRACTOR TO MAINTAIN TRAFFIC FLOW DURING THE ENTIRE CONSTRUCTION PERIOD. MAINTENANCE OF ROAD CUTS SHALL BE THE RESPONSIBILITY OF THE CONTRACTOR. PROVISION OF FLAGMEN, DETOURS AS NECESSARY, BARRICADES AND SIGNS TO THE FULL SATISFACTION OF THE ENGINEER AND ROAD AUTHORITY SHALL BE THE CONTRACTOR'S RESPONSIBILITY.
5.3 CONTRACTOR TO PREPARE SUBGRADE, INCLUDING PROOFROLLING, TO THE SATISFACTION OF THE GEOTECHNICAL ENGINEER PRIOR TO THE COMMENCEMENT OF PLACEMENT OF GRANULAR B MATERIAL.
5.4 FILL TO BE PLACED AND COMPACTED PER THE GEOTECHNICAL REPORT REQUIREMENTS.
5.5 CONTRACTOR TO SUPPLY, PLACE AND COMPACT GRANULAR B MATERIAL IN ACCORDANCE WITH THE RECOMMENDATIONS OF THE GEOTECHNICAL ENGINEER. CONTRACTOR TO PROVIDE ENGINEER WITH SAMPLES OF GRANULAR B MATERIAL FOR TESTING AND CERTIFICATION FROM THE GEOTECHNICAL ENGINEER THAT THE MATERIAL MEETS THE GRADATION REQUIREMENTS SPECIFIED IN THE GEOTECHNICAL REPORT.
5.6 GRANULAR A MATERIAL TO BE PLACED ONLY UPON APPROVAL BY THE GEOTECHNICAL ENGINEER OF GRANULAR B PLACEMENT.
5.7 ASPHALT MATERIAL TO BE PLACED ONLY UPON APPROVAL BY THE GEOTECHNICAL ENGINEER OF GRANULAR A PLACEMENT.
5.8 CONTRACTOR TO SUPPLY, PLACE AND COMPACT ASPHALT MATERIAL IN ACCORDANCE WITH THE RECOMMENDATIONS OF THE GEOTECHNICAL ENGINEER. CONTRACTOR TO PROVIDE ENGINEER WITH SAMPLES OF ASPHALT MATERIAL FOR TESTING AND CERTIFICATION FROM THE GEOTECHNICAL ENGINEER THAT THE MATERIAL MEETS THE REQUIREMENTS SPECIFIED IN THE GEOTECHNICAL REPORT.
5.9 CONTRACTOR IS RESPONSIBLE FOR ESTABLISHING LINE AND GRADE IN ACCORDANCE WITH THE PLANS, AND FOR PROVIDING THE ENGINEER WITH VERIFICATION PRIOR TO PLACEMENT.
5.10 DITCHES AND CULVERTS DISTURBED DURING ARE TO BE REINSTATED TO THEIR ORIGINAL CONDITION AND FLOWLINE GRADES.
5.11 PAVEMENT STRUCTURE (MATERIAL TYPES AND THICKNESSES) FOR HEAVY DUTY AND LIGHT DUTY AREAS TO BE AS SPECIFIED IN THE GEOTECHNICAL REPORT AND SHOWN ON THE PLANS.

STM STRUCTURE TABLE

Table with 7 columns: NAME, RIM ELEV., INVERT IN, INVERT IN AS-BUILT, INVERT OUT, INVERT OUT AS-BUILT, DESCRIPTION. Rows include MH1 through XMH102.

SAN STRUCTURE TABLE

Table with 7 columns: NAME, RIM ELEV., INVERT IN, INVERT IN AS-BUILT, INVERT OUT, INVERT OUT AS-BUILT, DESCRIPTION. Rows include MH1A through XMH102A.

PAVEMENT STRUCTURE **

CAR ONLY PARKING AREAS:
50mm WEAR COURSE - HL-3 OR SUPERPAVE 12.5 ASPHALTIC CONCRETE
150mm BASE - OPSS GRANULAR GRANULAR 'A' CRUSHED STONE
300mm SUBBASE - OPSS GRANULAR 'B' TYPE II
SUBGRADE - IN SITU SOIL OR OPSS GRANULAR 'B' TYPE I OR II
MATERIAL PLACED OVER IN SITU SOIL.

HEAVY TRUCK PARKING AREAS AND ACCESS LANES:
40mm WEAR COURSE - HL-3 OR SUPERPAVE 12.5 ASPHALTIC CONCRETE
50mm BINDER COURSE - HL-8 OR SUPERPAVE 19.0 ASPHALTIC CONCRETE
150mm BASE COURSE - OPSS GRANULAR 'A' CRUSHED STONE
450mm SUBBASE - OPSS GRANULAR 'B' TYPE II
SUBGRADE - IN SITU SOIL OR OPSS GRANULAR 'B' TYPE I OR II
MATERIAL PLACED OVER IN SITU SOIL.

** REFER TO GEOTECHNICAL REPORT BY GOLDER ASSOCIATES LTD.

CROSSING SCHEDULE

Table with 4 columns: ID, Diameter, Length, Clearance. Rows 1 through 29 detailing various crossing types like STM, W/M, SAN, and BEND.

WATERMAIN SCHEDULE

Table with 6 columns: Station, Description, Finish Grade, Top of Watermain, As Built Watermain. Rows A through S detailing watermain segments.

LEGEND:

Legend for sanitary and storm structures, including symbols for manholes, catchbasins, valves, hydrants, and watermain types.

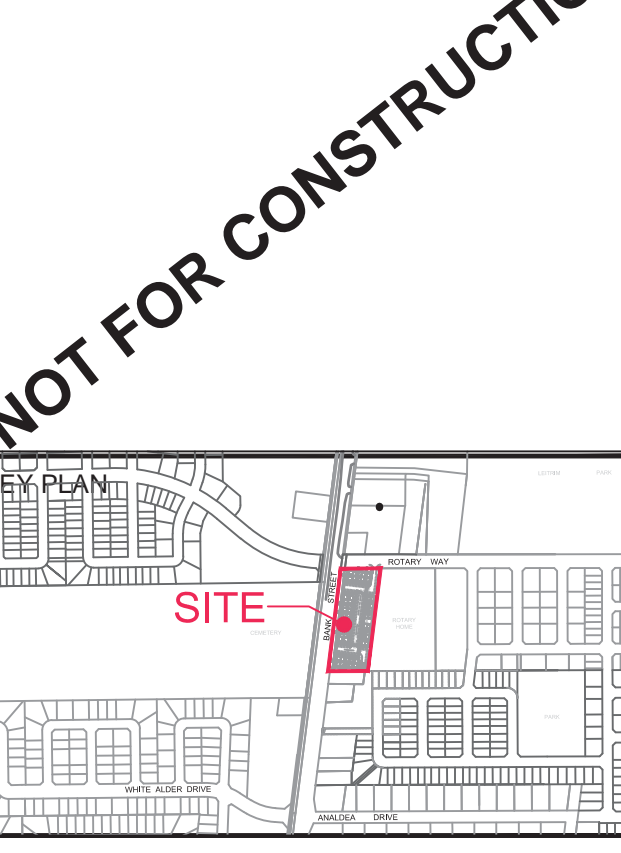
J.D. BARNES LTD. TOPOGRAPHIC LEGEND

Legend for topographic features, including symbols for concrete pads, foundations, fences, utilities, and retaining walls.

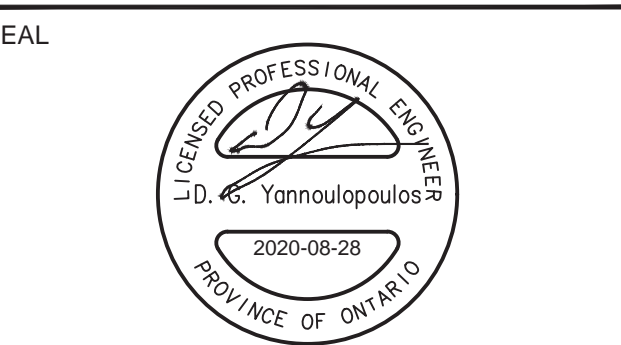
CLIENT: GLENVIEW HOMES
190 O'Connor St., 11th floor, Ottawa, ON

COPYRIGHT: This drawing has been prepared solely for the intended use... IBI Group Professional Services (Canada) Inc.

ISSUES table with columns: No., DESCRIPTION, DATE. Row 1: SUBMITTED FOR ZBA AND SPA, 2020-08-28.



CONSULTANTS: Project Coordinator: Terrain Development Consulting; Architect: M. David Blakely Architects Inc.; Landscape: James B. Lennox & Assoc. Inc.; Surveyor: J.D. Barnes Ltd.; Geotech: Golder Associates Ltd.

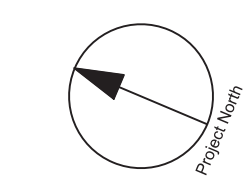


IBI GROUP
Suite 400 - 333 Preston Street
Ottawa ON K1S 5N4 Canada
Tel: 613 225 1311 | 613 241 3300 | Fax: 613 225 9868
ibi@group.com

PROJECT: 4639 BANK STREET
PROJECT NO: 125600
DRAWN BY: D.D./E.H. CHECKED BY: R.M.
PROJECT MGR: D.Y. APPROVED BY: D.Y.

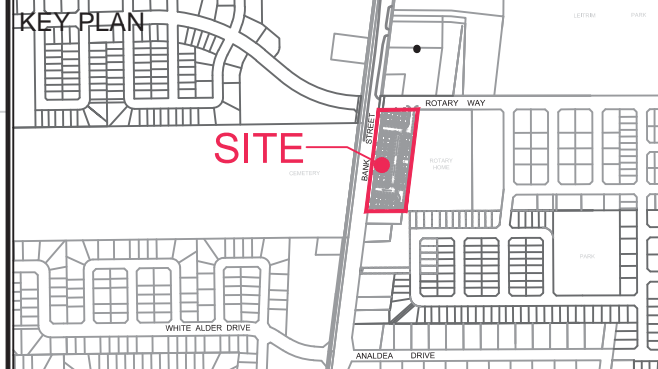
SHEET TITLE: DETAILS AND NOTES
SHEET NUMBER: C-010 ISSUE: 1

File Location: \\172600_4639BankSt7.0_Production\7.0_Design\04_4639BankSt7.0_Details\04_C-010_Details_and_Notes.dwg Last Saved: August 28, 2020, by: Elenne. Printed: Friday, August 28, 2020 12:03:08 PM by: Eric Henne

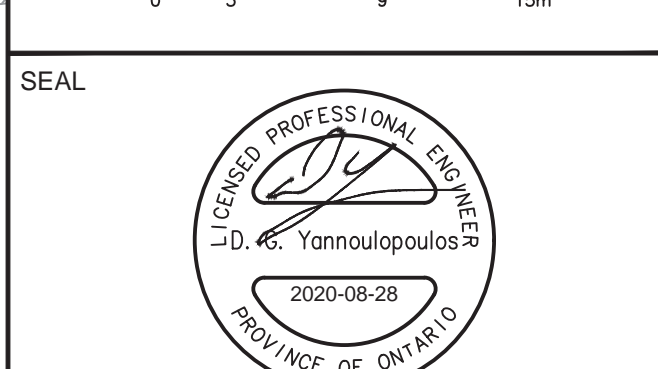
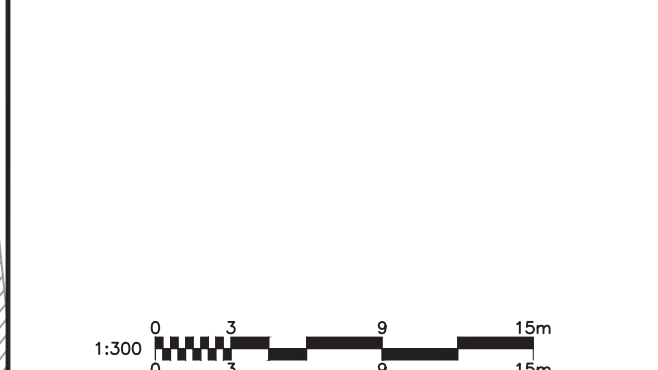


ISSUES	No.	DESCRIPTION	DATE
	1	SUBMITTED FOR ZBA AND SPA	2020-08-28

NOT FOR CONSTRUCTION



CONSULTANTS
 Project Coordinator
 Terrain Development Consulting
 Architect:
 M. David Blakely Architects Inc.
 Landscape:
 James B. Lennox & Assoc. Inc.
 Surveyor:
 J.D. Barnes Ltd.
 Geotech:
 Golder Associates Ltd.



SEAL



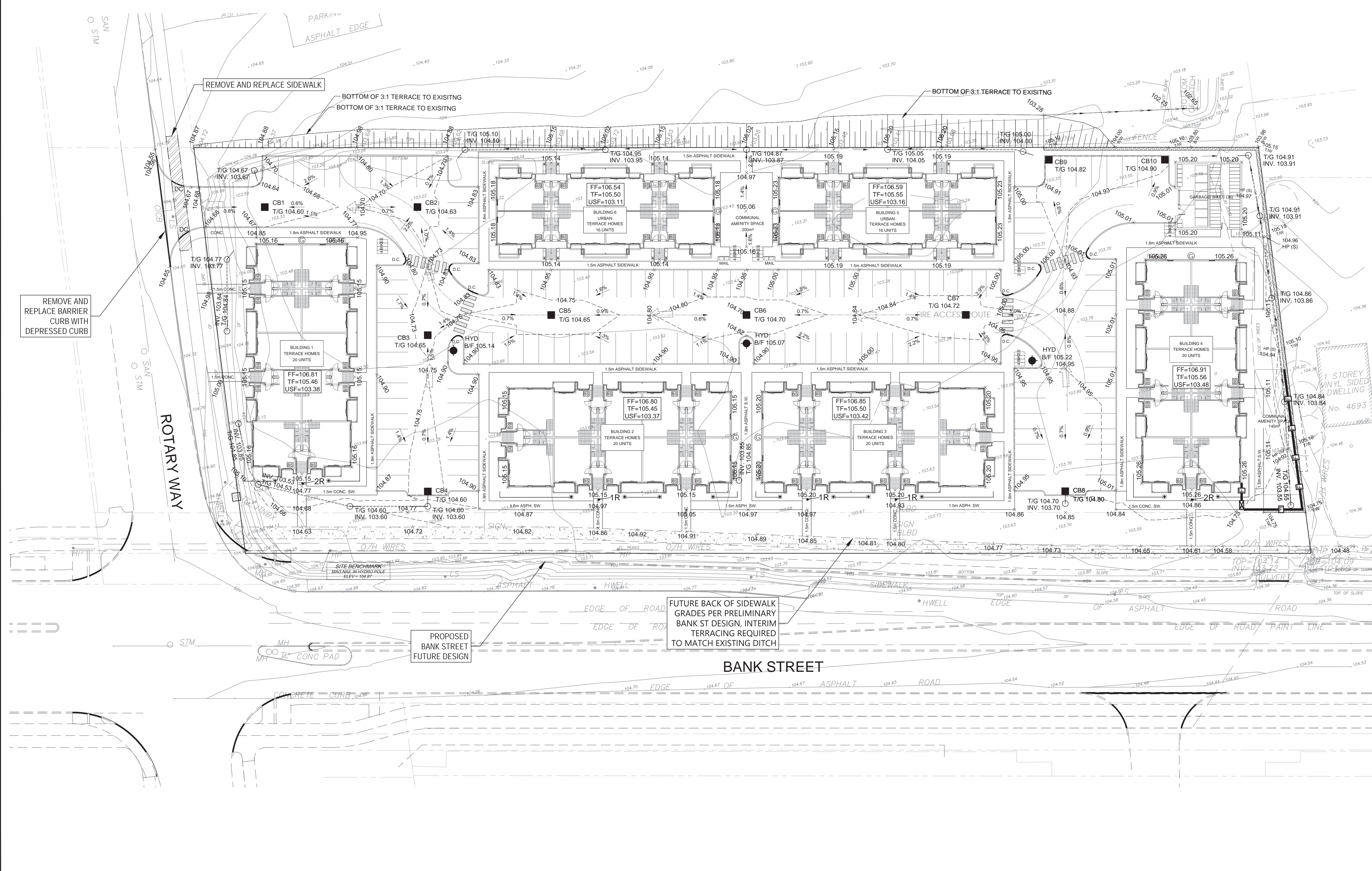
PROJECT
4639 BANK STREET
 4639 Bank Street

PROJECT NO:
 125600
 DRAWN BY:
 D.D./E.H.
 PROJECT MGR:
 D.Y.

CHECKED BY:
 R.M.
 APPROVED BY:
 D.Y.

SHEET TITLE
GRADING PLAN

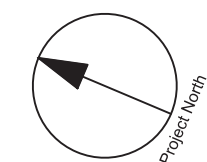
SHEET NUMBER
C-200
 ISSUE
1



File Location: \\1125600_4639BankSt\7.0_Production\02_Design\02_C-200 GRADING PLAN.dwg Last Saved: August 28, 2020, by: dstore. Plotted: Friday, August 28, 2020 12:03:22 PM by: Eric Henne

LEGEND:

	AREA IDENTIFICATION
	POPULATION
	AREA IN HECTARES



CLIENT
GLENVIEW HOMES
 190 O'Connor St., 11th floor, Ottawa, ON

COPYRIGHT
 This drawing has been prepared solely for the intended use, and any reproduction or distribution for any purpose other than authorized by IBI Group is forbidden. Written dimensions shall have precedence over scaled dimensions. Contractors shall verify and be responsible for all dimensions and conditions on the job, and IBI Group shall be informed of any variations from the dimensions and conditions shown on the drawing. Shop drawings shall be submitted to IBI Group for general concurrence before proceeding with fabrication.
 IBI Group Professional Services (Canada) Inc.
 is a member of the IBI Group of companies.

ISSUES

No.	DESCRIPTION	DATE
1	SUBMITTED FOR ZBA AND SPA	2020-08-26

NOT FOR CONSTRUCTION

KEY PLAN

CONSULTANTS
 Project Coordinator: Terrain Development Consulting
 Architect: M. David Blakely Architects Inc.
 Landscape: James B. Lennox & Assoc. Inc.
 Surveyor: J.D. Barnes Ltd.
 Geotech: Golder Associates Ltd.

SEAL

1:300 SCALE

IBI GROUP
 Suite 400 - 333 Preston Street
 Ottawa, ON K1S 5N4 Canada
 Tel: 613 225 1311 / 613 241 3300 Fax: 613 225 9868
 ibigroup.com

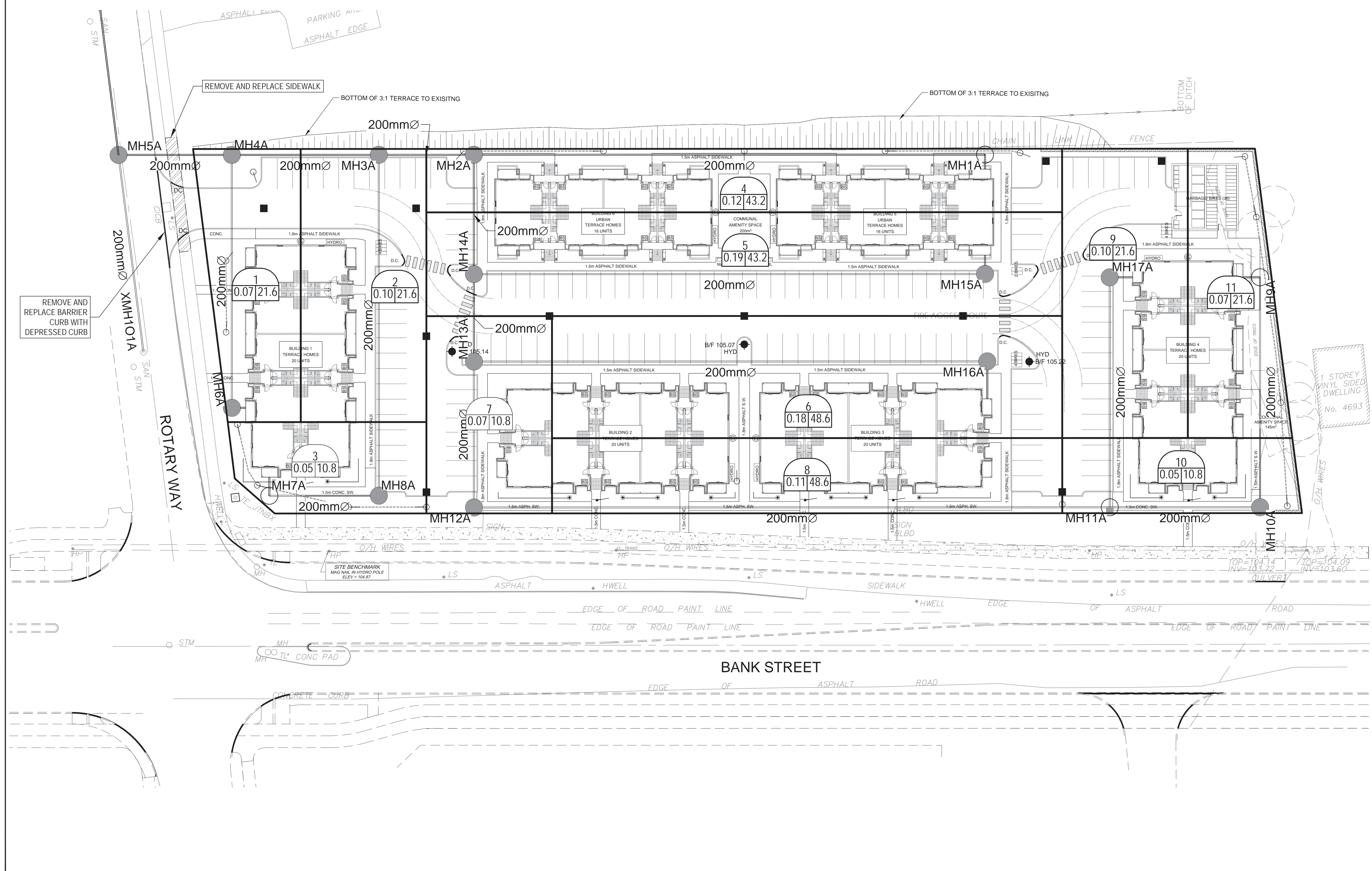
PROJECT
 4639 BANK STREET
 4639 Bank Street

PROJECT NO: 125600

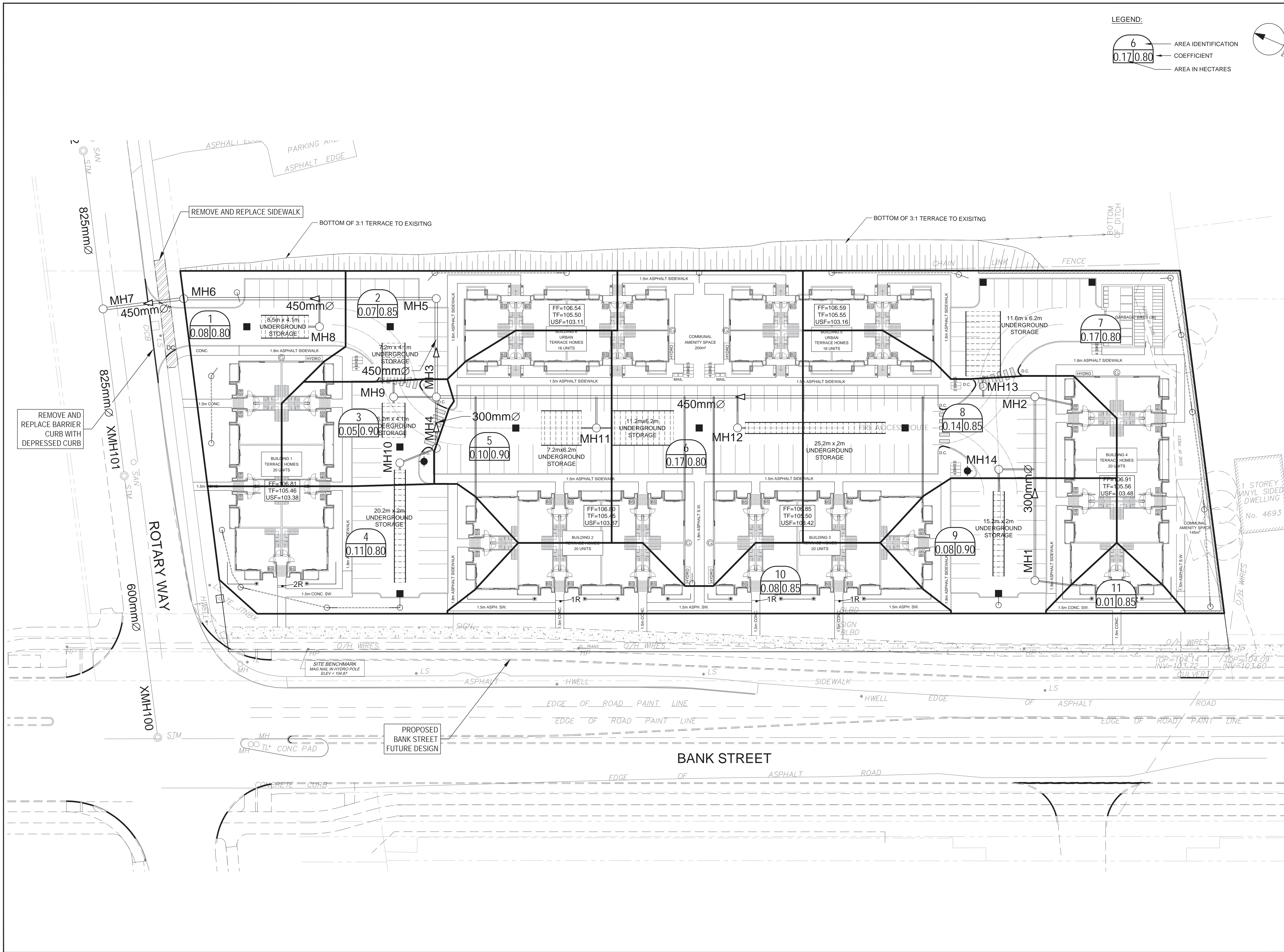
DRAWN BY: D.D./E.H.	CHECKED BY: R.M.
PROJECT MGR: D.Y.	APPROVED BY: D.Y.

SHEET TITLE
 SANITARY DRAINAGE AREA PLAN

SHEET NUMBER C-400	ISSUE 1
------------------------------	-------------------



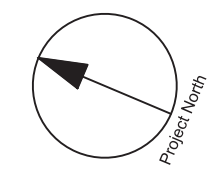
File Location: \\125600_4639BankSt7.0_Production\7.00_SANITARY DRAINAGE.dwg Last Saved: August 27, 2020, by idore Plotted: Friday, August 28, 2020 12:03:35 PM by Eric Henne



LEGEND:

6
0.17|0.80

AREA IDENTIFICATION
COEFFICIENT
AREA IN HECTARES



CLIENT
GLENVIEW HOMES
190 O'Connor St., 11th floor, Ottawa, ON

COPYRIGHT
This drawing has been prepared solely for the intended use, thus any reproduction or distribution for any purpose other than authorized by IBI Group is forbidden. When dimensions shall have precedence over scaled dimensions, Contractors shall verify and be responsible for all dimensions and conditions on the job, and IBI Group shall be informed of any variations from the dimensions and conditions shown on the drawing. Shop drawings shall be submitted to IBI Group for general concurrence before proceeding with fabrication.

IBI Group Professional Services (Canada) Inc.
is a member of the IBI Group of companies.

ISSUES	No.	DESCRIPTION	DATE
	1	SUBMITTED FOR ZBA AND SPA	2020-08-28

NOT FOR CONSTRUCTION



CONSULTANTS

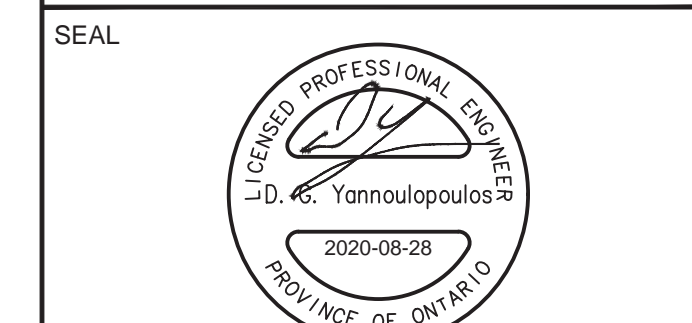
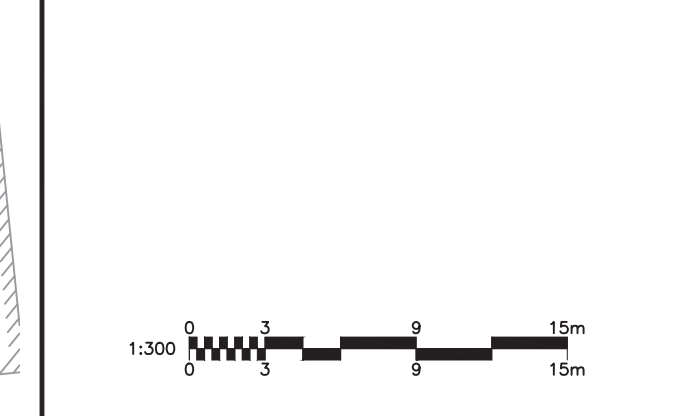
Project Coordinator
Terrain Development Consulting

Architect:
M. David Blakely Architects Inc.

Landscape:
James B. Lennox & Assoc. Inc.

Surveyor:
J.D. Barnes Ltd.

Geotech:
Golder Associates Ltd.



SEAL

IBI GROUP
Suite 400 - 333 Preston Street
Ottawa ON K1S 5N4 Canada
tel 613 225 1311 / 613 241 3300 fax 613 225 9868
ibigroup.com

PROJECT
4639 BANK STREET
4639 Bank Street

PROJECT NO:
125600

DRAWN BY:
D.D./E.H.

CHECKED BY:
R.Y.

PROJECT MGR:
D.Y.

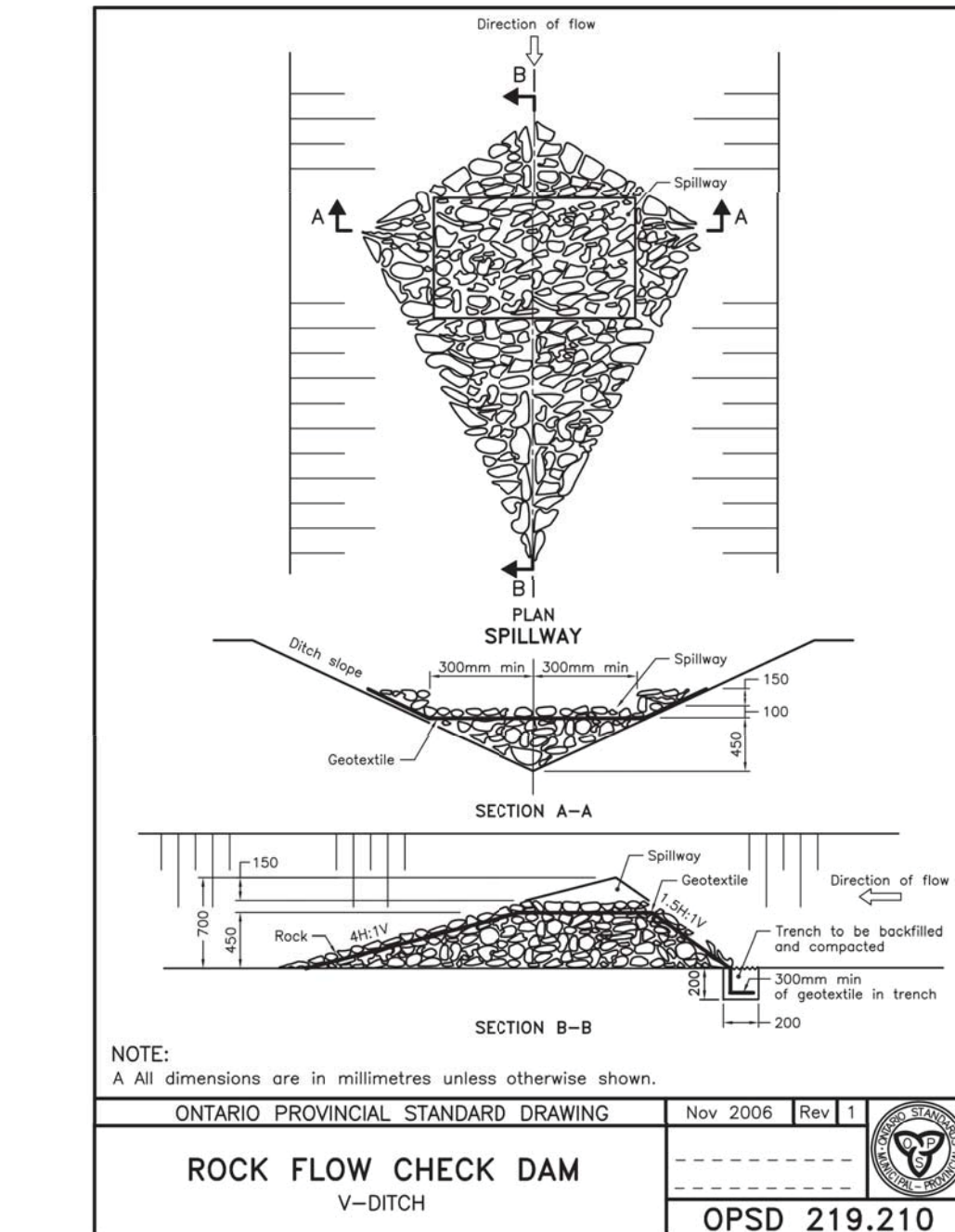
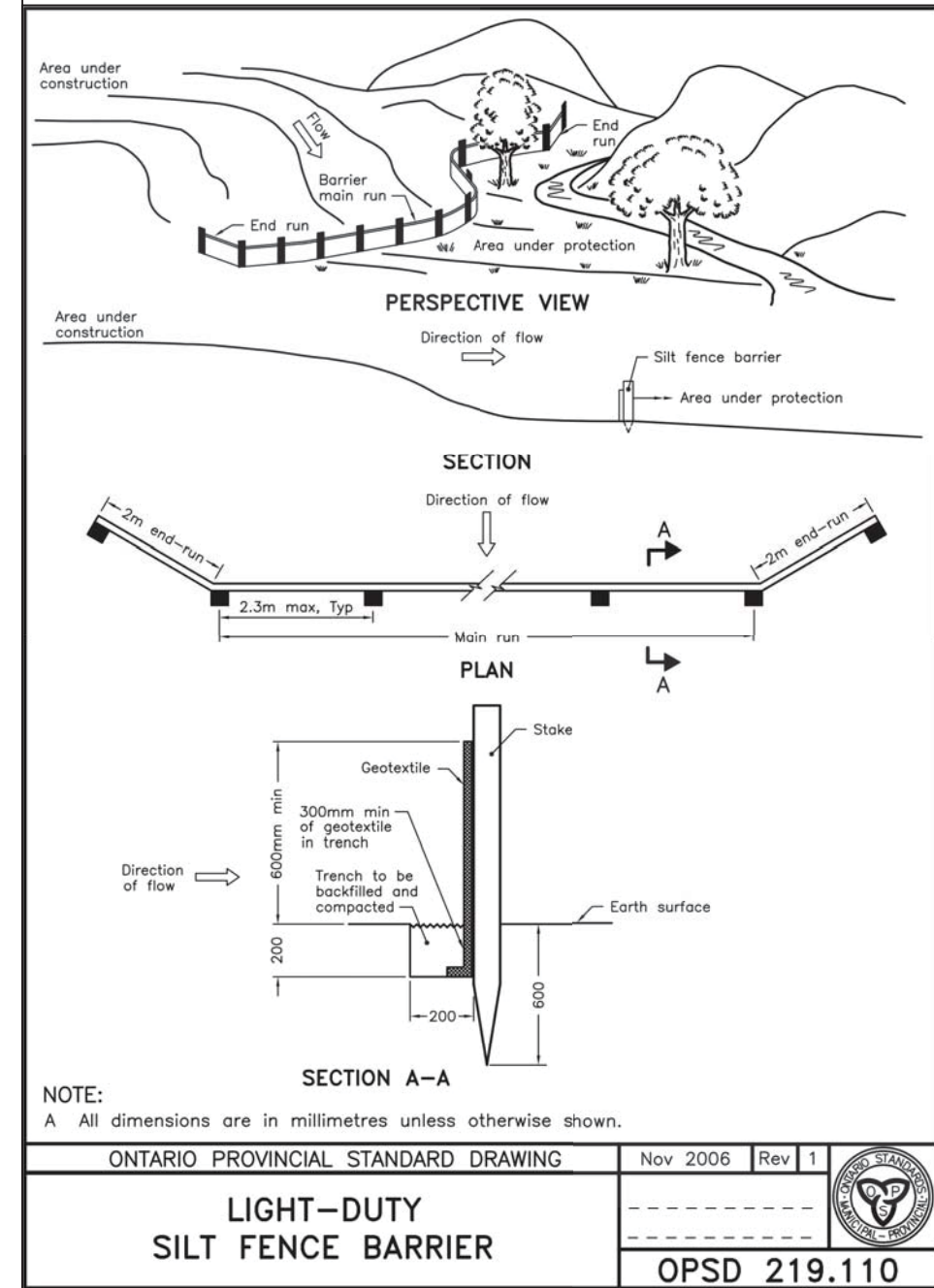
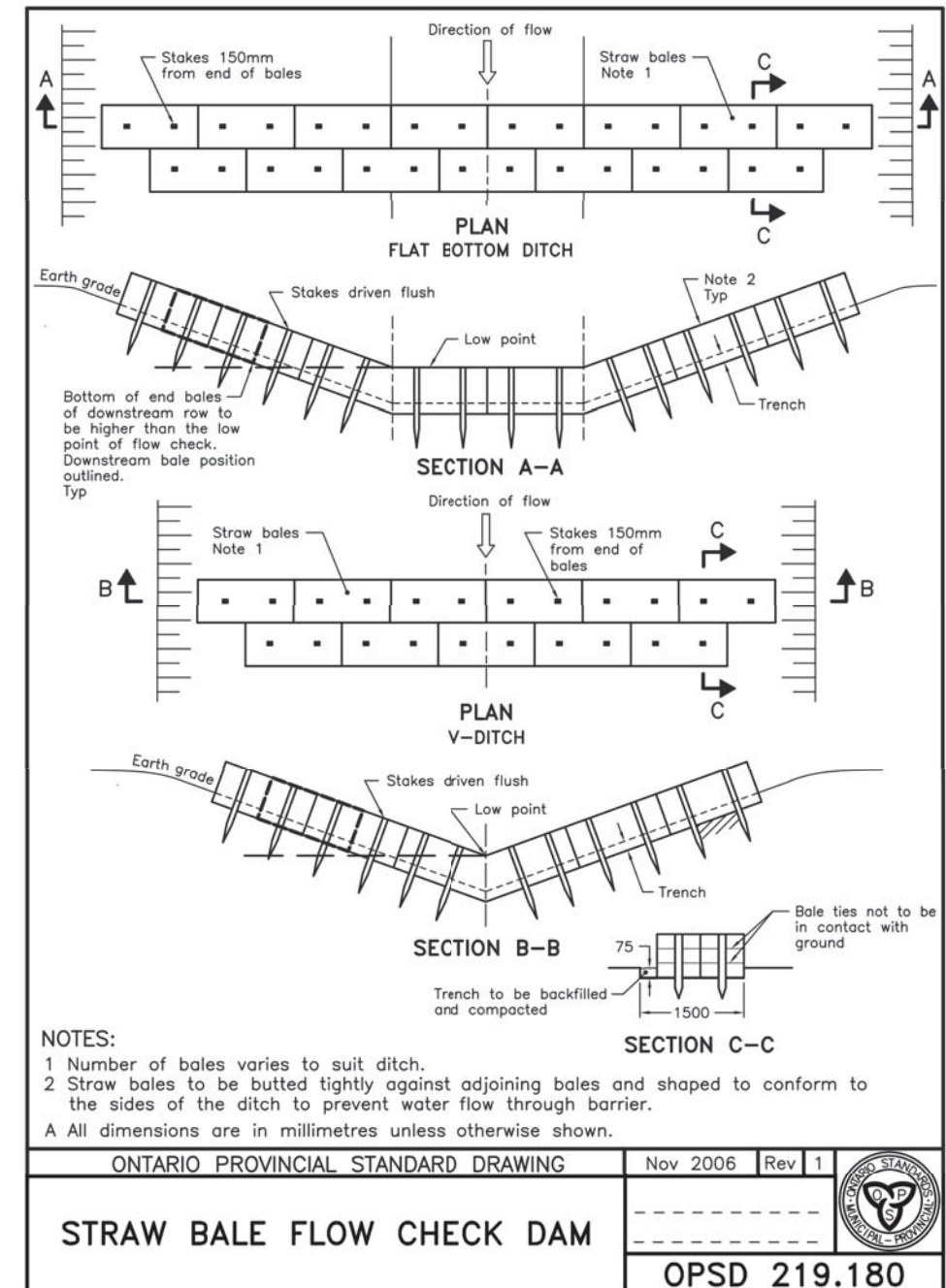
APPROVED BY:
D.Y.

SHEET TITLE
STORM DRAINAGE AREA PLAN

SHEET NUMBER
C-500

ISSUE
1

File Location: \\1125600_4639BankSt7.0_Production\7.02_Design\02_Civil\sheds\C-500 STORM DRAINAGE.dwg Last Saved: August 27, 2020, by: dmore Plotted: Friday, August 28, 2020, 12:03:49 PM by: Eric Henne



NOTES:

THE CONTRACTOR SHALL IMPLEMENT BEST MANAGEMENT PRACTICES, TO PROVIDE PROTECTION OF THE AREA DRAINAGE SYSTEM AND THE RECEIVING WATERCOURSE, DURING CONSTRUCTION ACTIVITIES. THE CONTRACTOR ACKNOWLEDGES THAT FAILURE TO IMPLEMENT APPROPRIATE EROSION AND SEDIMENT CONTROL MEASURES MAY BE SUBJECT TO PENALTIES IMPOSED BY ANY APPLICABLE REGULATORY AGENCY.

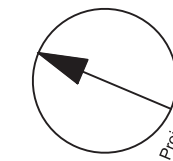
1. SILTY FENCE TO BE ERECTED PRIOR TO EARTH WORKS BEING COMMENCED. SILTY FENCE TO BE MAINTAINED UNTIL VEGETATION IS ESTABLISHED OR UNTIL START OF SUBSEQUENT PHASE.
2. STRAW BALE SEDIMENT TRAPS TO BE CONSTRUCTED IN EXISTING ROAD SIDE DITCHES. TRAPS TO REMAIN AND BE MAINTAINED UNTIL VEGETATION IS ESTABLISHED.
3. SILTY SACK TO BE PLACED AND MAINTAINED UNDER COVER OF ALL CATCHBASINS; GEOTEXTILE SILTY SACK IN STREET CBS TO REMAIN UNTIL ALL CURBS ARE CONSTRUCTED. GEOTEXTILE FABRIC IN RVCBS TO REMAIN UNTIL VEGETATION IS ESTABLISHED. ALL CATCHBASINS TO BE REGULARLY INSPECTED AND CLEANED, AS NECESSARY, UNTIL SOD AND CURBS ARE CONSTRUCTED.
4. WORKS NOTED ABOVE ARE TO BE INSTALLED, INSPECTED, MAINTAINED AND ULTIMATELY REMOVED BY SERVICING CONTRACTOR.
5. THIS IS A "LIVING DOCUMENT" AND MAY BE MODIFIED IN THE EVENT THE PROPOSED CONTROL MEASURES ARE INSUFFICIENT.

LEGEND:

- LIGHT DUTY SILTY FENCE AS PER OPSD-219.110
- SNOW FENCE
- STRAW BALE CHECK DAM AS PER OPSD-219.180
- ◆ ROCK CHECK DAM AS PER OPSD-219.210
- SILTY SACK PLACED UNDER EXISTING CB COVER
- TEMPORARY MUD MAT 0.15m THICK 50mm CLEAR STONE ON NON WOVEN FILTER CLOTH

NOTES:

1. SEE DRAWING C-010 FOR ADDITIONAL DETAILS AND NOTES.
2. SITE BENCHMARK TO BE OBTAINED FROM LEGAL SURVEYOR J. D. BARNES LIMITED.



CLIENT
GLENVIEW HOMES
190 O'Connor St., 11th floor, Ottawa, ON

COPYRIGHT
This drawing has been prepared solely for the intended use. Any reproduction or distribution for any purpose other than that authorized by IBI Group is prohibited. IBI Group shall have precedence over scaled dimensions. Contractors shall verify and be responsible for all dimensions and conditions on the job, and IBI Group shall be notified of any variations from the dimensions and conditions shown on the drawing. Shop drawings shall be submitted to IBI Group for general concurrence before proceeding with fabrication.
IBI Group Professional Services (Canada) Inc.
is a member of the IBI Group of companies.

ISSUES		
No.	DESCRIPTION	DATE
1	SUBMITTED FOR ZBA AND SPA	2020-08-20



CONSULTANTS
Project Coordinator: Terrain Development Consulting
Architect: M. David Blakely Architects Inc.
Landscape: James B. Lennox & Assoc. Inc.
Surveyor: J.D. Barnes Ltd.
Geotech: Golder Associates Ltd.

SEAL
Professional Engineer's Seal for J. Darnoldopoulos, P. Eng., Province of Ontario.

IBI GROUP
Suite 400 - 333 Preston Street
Ottawa ON K1S 5N4 Canada
Tel: 613 225 1311 / 613 241 3300 Fax: 613 225 9868
ibigroup.com

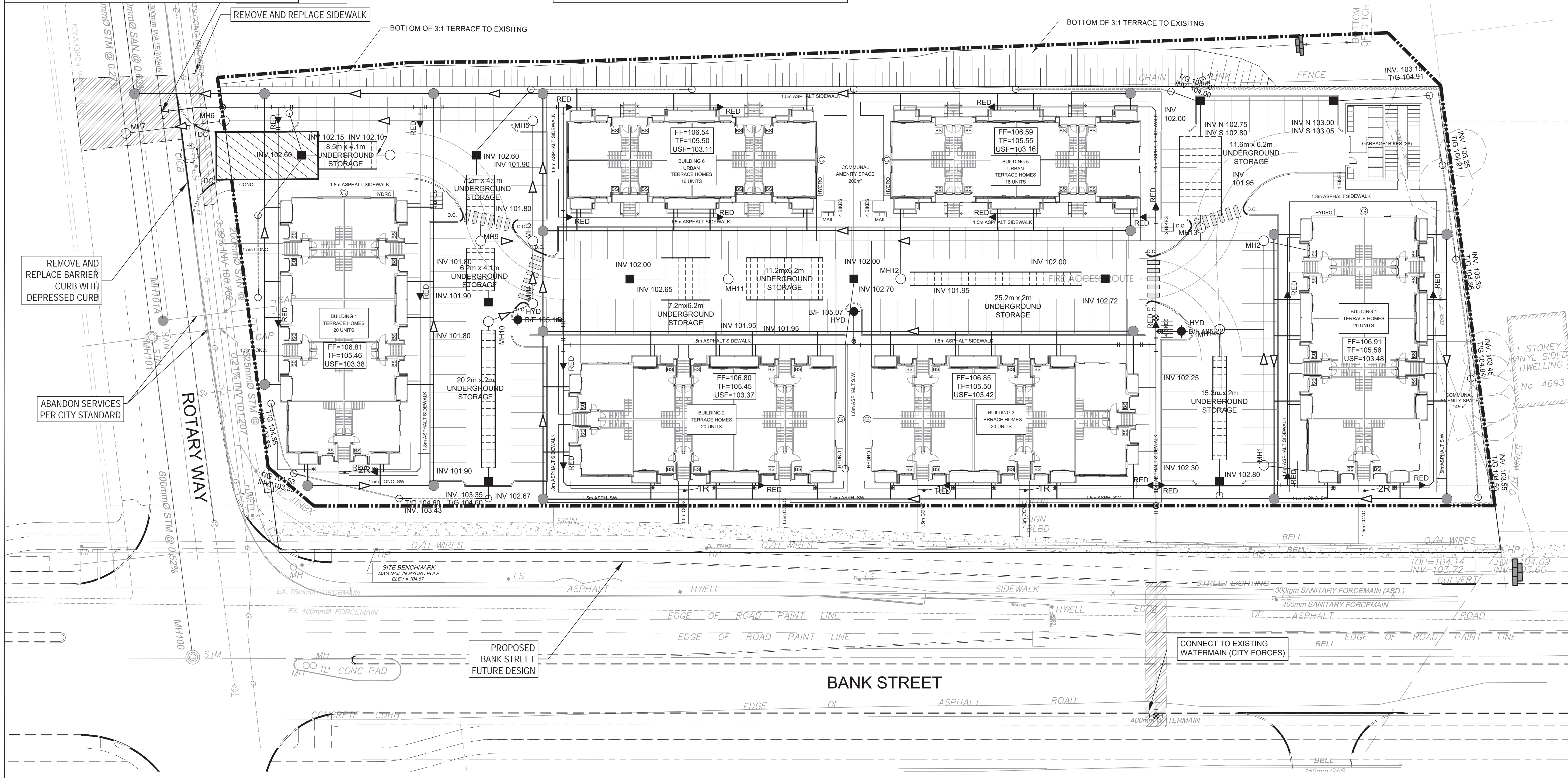
PROJECT
4639 BANK STREET
4639 Bank Street

PROJECT NO: 125600
DRAWN BY: D.D./E.H.
PROJECT MGR: D.Y.

CHECKED BY: R.M.
APPROVED BY: D.Y.

SHEET TITLE
EROSION AND SEDIMENTATION CONTROL PLAN

SHEET NUMBER **C-900** ISSUE **1**



1:300 scale bar showing 0, 3, 6, 9, 12, 15m.