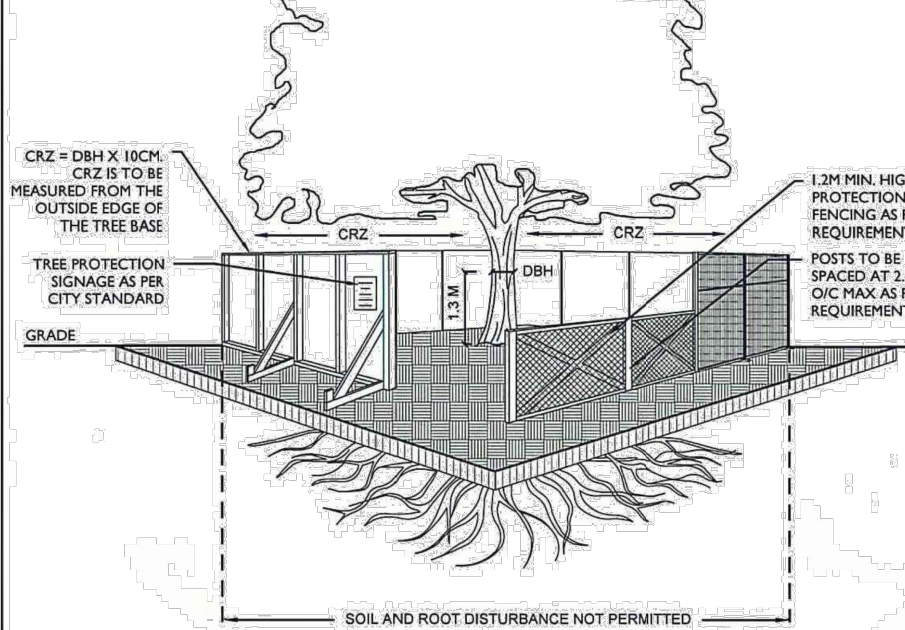


PLAN VIEW



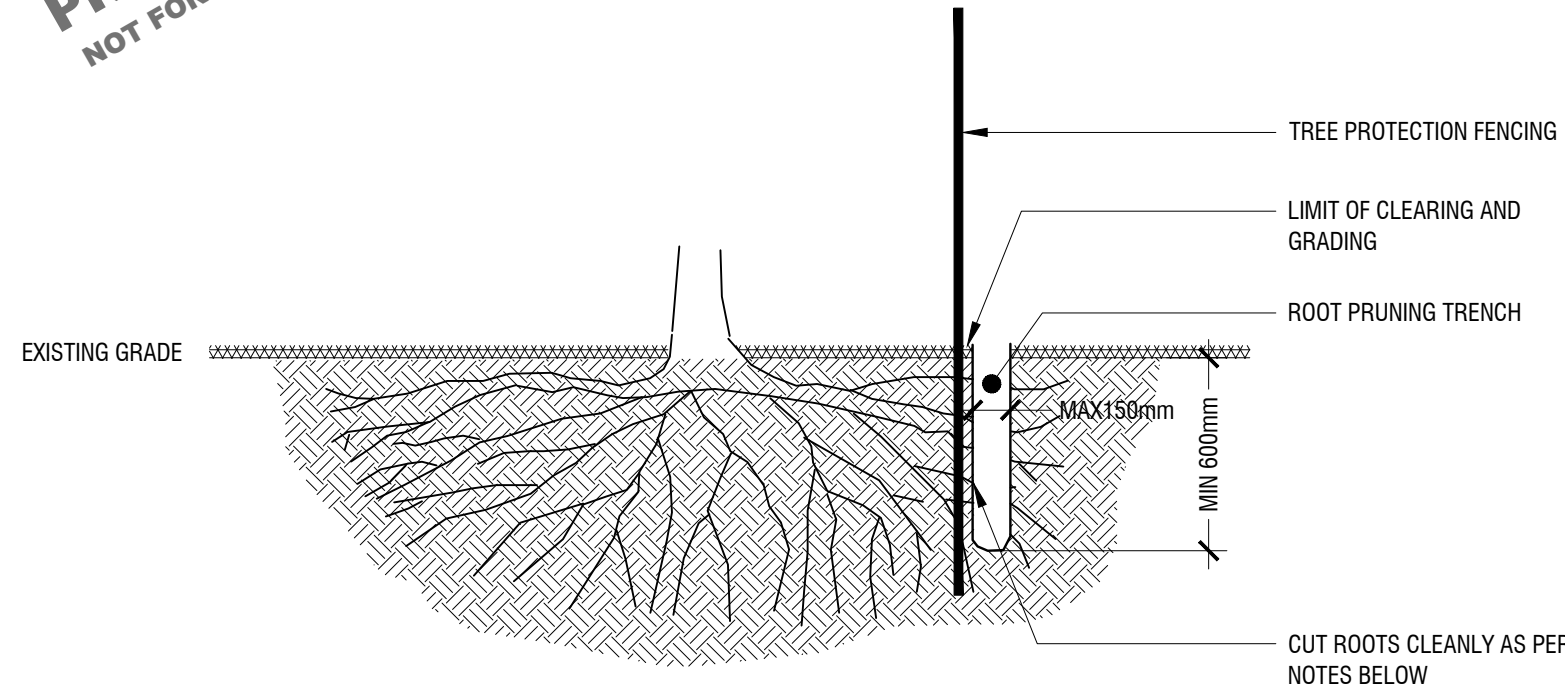
CROSS SECTION

ACCESSIBLE FORMATS AND COMMUNICATION  
SUPPORTS ARE AVAILABLE, UPON REQUEST

## TREE PROTECTION REQUIREMENTS:

1. PRIOR TO ANY WORK ACTIVITY WITHIN THE CRITICAL ROOT ZONE (CRZ = 10 X DIAMETER OF A TREE, TREE PROTECTION FENCING MUST BE INSTALLED SURROUNDING THE CRITICAL ROOT ZONE, AND REMAIN IN PLACE UNTIL THE WORK IS COMPLETE.
2. UNLESS PLANS ARE APPROVED BY CITY FORESTRY STAFF, FOR WORK WITHIN THE CRZ:
  - DO NOT PLACE ANY MATERIAL OR EQUIPMENT - INCLUDING OUTHOUSES.
  - DO NOT ATTACH ANY SIGNS, NOTICES OR POSTERS TO ANY TREE;
  - DO NOT RAISE OR LOWER THE EXISTING GRADE;
  - TUNNEL OR BORE WHEN DIGGING;
  - DO NOT DAMAGE THE ROOT SYSTEM, TRUNK, OR BRANCHES OR ANY TREE;
  - ENSURE THAT EXHAUST FUMES FROM ALL EQUIPMENT ARE NOT DIRECTED TOWARD ANY TREE CANOPY;
  - DO NOT EXTEND HAND SURFACE OR SIGNIFICANTLY CHANGE LANDSCAPING.
3. TREE PROTECTION FENCING MUST BE AT LEAST 1.2M IN HEIGHT, AND CONSTRUCTED OF RIGID OR FRAMED MATERIALS (E.G. MODULOC - STEEL, PLYWOOD HOARDING, OR SNOW FENCE ON A 2"x4" WOOD FRAME) WITH POSTS 2.4M APART, SUCH THAT THE FENCE LOCATION CANNOT BE ALTERED. ALL SUPPORTS AND BRACING MUST BE PLACED OUTSIDE OF THE CRZ, AND INSTALLATION MUST MINIMIZE DAMAGE TO EXISTING ROOTS. (SEE DETAIL).
4. THE LOCATION OF THE TREE PROTECTION FENCING MUST BE DETERMINED BY AN ARBORIST AND DETAILED ON ANY ASSOCIATED PLANS FOR THE SITE (E.G. TREE CONSERVATION REPORT, TREE DISCLOSURE REPORT, ETC.). THE PLAN AND CONSTRUCTED FENCING MUST BE APPROVED BY CITY FORESTRY STAFF PRIOR TO THE COMMENCEMENT OF WORK.
5. IF THE FENCED TREE PROTECTION AREA MUST BE REDUCED TO FACILITATE CONSTRUCTION, MITIGATION MEASURES MUST BE PRESCRIBED BY AN ARBORIST AND APPROVED BY CITY FORESTRY STAFF. THESE MAY INCLUDE THE PLACEMENT OF PLYWOOD, WOOD CHIPS, OR STEEL PLATING OVER THE ROOTS FOR PROTECTION ON THE PROPER PRUNING AND CARE OF ROOTS WHERE ENCOUNTERED.

BY-LAWS:  
ALL CITY-OWNED TREES ARE PROTECTED UNDER THE MUNICIPAL TREES AND NATURAL AREAS PROTECTION BY-LAW (2006-279). WITHIN THE URBAN AREA, PRIVATELY-OWNED TREES GREATER THAN 30CM DIAMETER ON LOTS >1HA IN SIZE OR LESS, AND TREES GREATER THAN 10CM DIAMETER ON LOTS >1HA, ARE PROTECTED UNDER THE URBAN TREE CONSERVATION BY-LAW (2009-200).

PRELIMINARY  
NOT FOR CONSTRUCTION

## NOTES:

- PROPER ROOT PRUNING TECHNIQUE REQUIRED WHEN TREE ROOTS ENCOUNTERED DURING EXCAVATION.
- EXCAVATIONS WITHIN DRIPLINE SHOULD BE BY DIRECTIONAL MICRO-TUNNELLING AND BORING. OUTSIDE THE DRIPLINE, ROOTS SHOULD BE CUT CLEANLY (AS PER ABOVE DRAWING) WITH PRUNING SHEARS OR A SAW WIPED WITH ALCOHOL BEFORE EACH CUT.
- AFTER ROOTS ARE CLEANLY CUT, THE AREA SHOULD BE BACKFILLED WITH SUITABLE MATERIAL (TO BE APPROVED BY LANDSCAPE ARCHITECT) TO PREVENT DESSICATION;
- WHERE APPROPRIATE, THE TREES SHALL UNDERGO AN OVERALL PRUNING TO RESTORE TREE APPEARANCE AND / OR RESTORE THE BALANCE BETWEEN TOP GROWTH AND ROOTS. DO NOT PRUNE LEADERS.

## NOTES:

DO NOT SCALE DRAWINGS;

NOTES ARE APPLICABLE TO ALL DRAWINGS IN THE SET;

Fotenn Consultants Inc. IS NOT RESPONSIBLE FOR ACCURACY OF BASE INFORMATION;

REFER TO CIVIL ENGINEERING DRAWINGS FOR GRADING &amp; SITE SERVICING INFORMATION;

THE CONTRACTOR IS RESPONSIBLE FOR CONFIRMING SITE CONDITIONS AND REPORTING ANY DISCREPANCIES TO THE LANDSCAPE ARCHITECT;

THE CONTRACTOR IS RESPONSIBLE FOR CONFIRMING EXACT LOCATIONS OF ALL UNDERGROUND SERVICES AND OBTAINING CLEARANCE FROM ALL APPLICABLE UTILITIES. PROPOSED WORKS FOUND TO BE IN CONFLICT WITH UNDERGROUND SERVICES MAY BE ADJUSTED AT THE DIRECTION OF THE LANDSCAPE ARCHITECT;

LANDSCAPE ELEMENTS SHOWN ARE SUBJECT TO THE FINAL LOCATION OF UNDERGROUND SERVICES AND UTILITIES;

DO NOT INSTALL TREES ON PROPERTY / LOT LINES OR WITHIN DRAINAGE EASEMENTS;

PERFORM WORK IN ACCORDANCE WITH DETAILS AND SPECIFICATIONS;

ALL PLANT MATERIAL SHALL BE No. 1 NURSERY STOCK AND SHALL MEET OR EXCEED THE SPECIFICATION OF THE Canadian Standards for Nursery Stock, AS PUBLISHED BY THE Canadian Nursery Landscape Association;

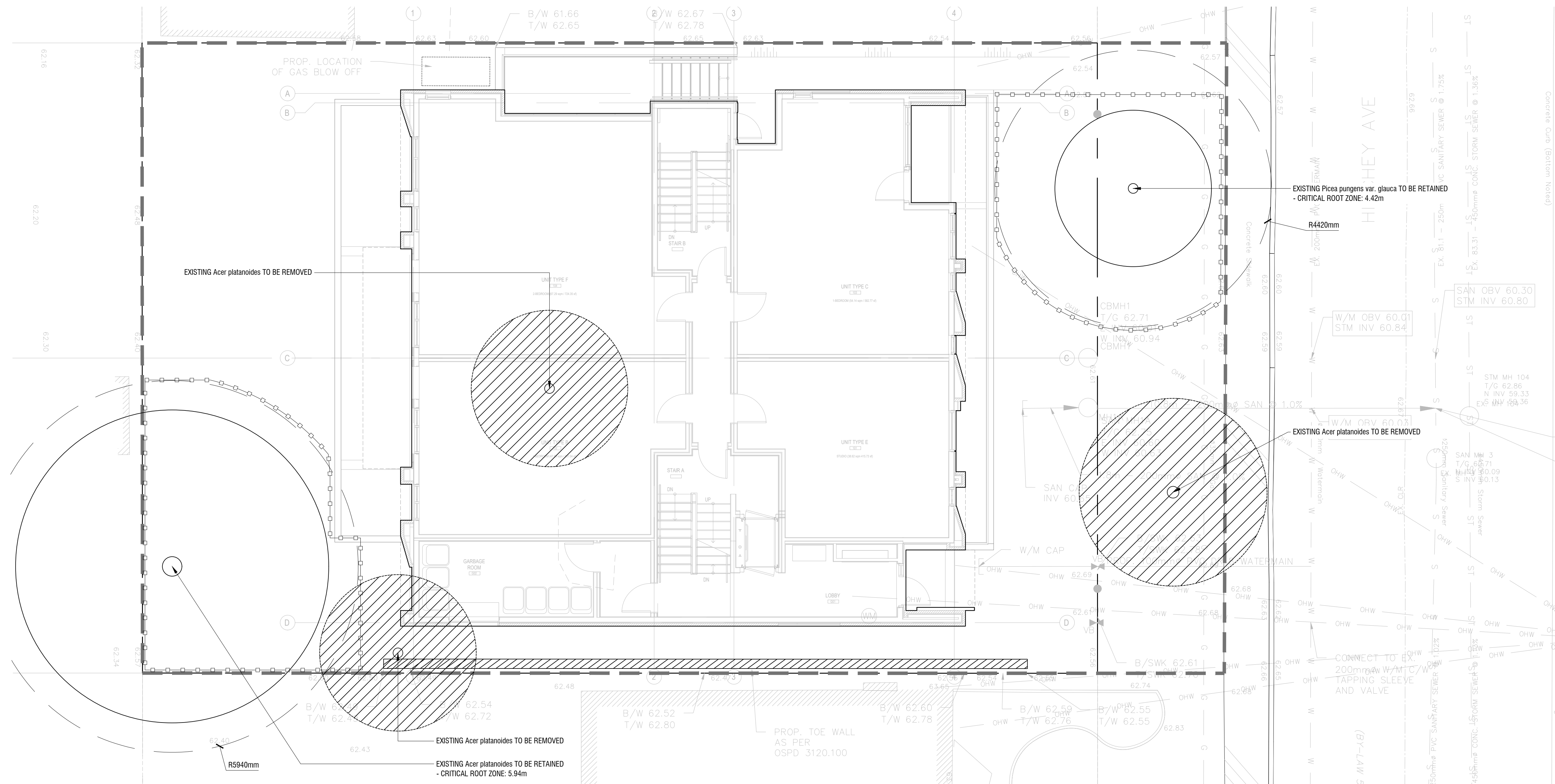
SPECIES SUBSTITUTIONS ARE NOT PERMITTED WITHOUT PRIOR WRITTEN APPROVAL OF THE LANDSCAPE ARCHITECT;

ALL UN-PAVED SURFACES TO RECEIVE 150mm DEPTH TOPSOIL &amp; SOD.

## IMPORTANT NOTICE FOR CONTRACTOR:

THE CITY OF OTTAWA REQUIRES A Certificate of Completion (F1) Landscape Works TO BE SUBMITTED AND SEALED BY THE LANDSCAPE ARCHITECT. CONTRACTORS ARE RESPONSIBLE FOR FAMILIARIZING THEMSELVES WITH THE REQUIREMENTS OF THIS PROCESS AND PROVIDING SUFFICIENT NOTICE TO THE LANDSCAPE ARCHITECT TO CONDUCT SITE REVIEWS **DURING INSTALLATION** OF TREES. THE 1 YEAR WARRANTY PERIOD SHALL NOT COMMENCE UNTIL THE LANDSCAPE ARCHITECT HAS SUBMITTED THE F1 Certificate.

PRIOR TO INSTALLATION OF TREES, THE DEVELOPER WILL CONTACT THE PLANNING AND GROWTH MANAGEMENT AND FORESTRY SERVICES TO REVIEW THE SPECIES AND LOCATION OF TREES.

1 TREE PROTECTION FENCING  
L1 NTS2 ROOT PRUNING TECHNIQUE  
L1 1:303 TREE REMOVALS & PROTECTION PLAN  
L1 1:75

## ALEXANDRE AUBREY

key plan / plan repère

## legend / légende

- LIMIT OF WORK
- EXISTING TREES TO REMAIN
- CRITICAL ROOT ZONE
- EXISTING TREES TO BE REMOVED
- TREE PROTECTION FENCING

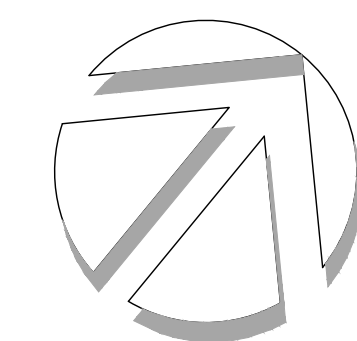
NOTE: REFER TO TCR AS PREPARED BY IFS ASSOCIATES FOR EXISTING TREE SPECIES, CONDITION, DBH, AND REMOVAL STATUS

rev'n	description / la description	yyyy/mm/dd
04	re-issue for Site Plan Submittal #2	2020/09/08
03	re-issue for Site Plan Submittal #2	2020/09/03
02	issue for Site Plan Submittal #2	2020/08/21
01	issue for SPA	2020/03/04
00	issue for client review	2020/02/27

**FOTENN** Planning + Design  
396 Cooper Street, Suite 300  
Ottawa, ON, CANADA K2P 2H7  
613.730.5709  
fotenn.com

north / le nord

stamp / le cachet



project / projet

## 250 - 252 HINCHEY AVE.

drawing / dessin

## TREE REMOVALS &amp; PROTECTION PLAN

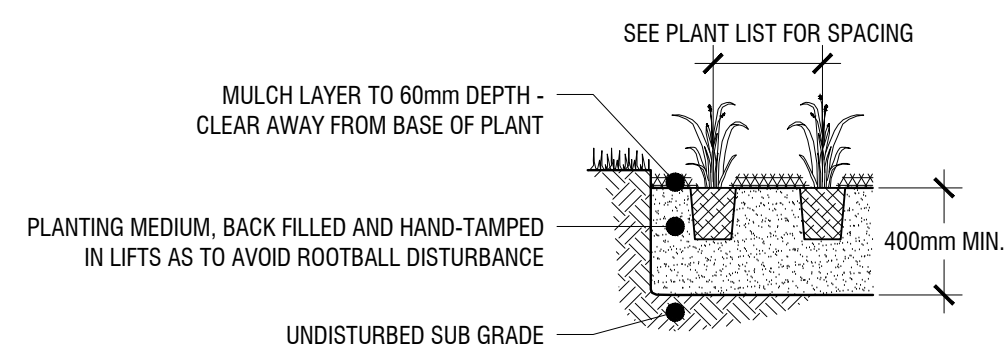
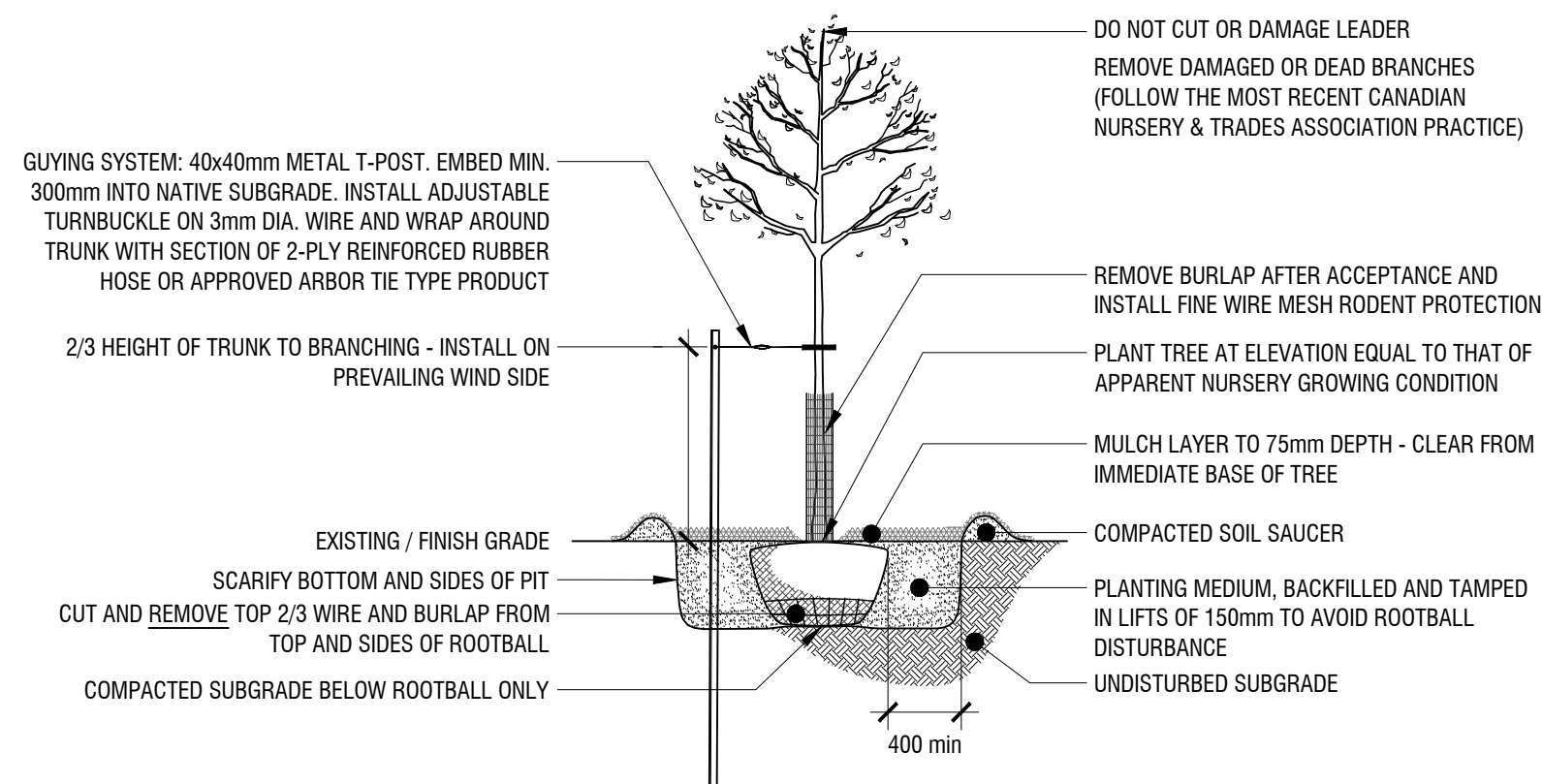
designed / conçu	drawn / dessiné	reviewed / examiné
OM	OM	SP/DF
date	project number / No. du projet	

JANUARY 2020

drawing number / No. du dessin

L1 of 2





**PRELIMINARY**  
**NOT FOR CONSTRUCTION**

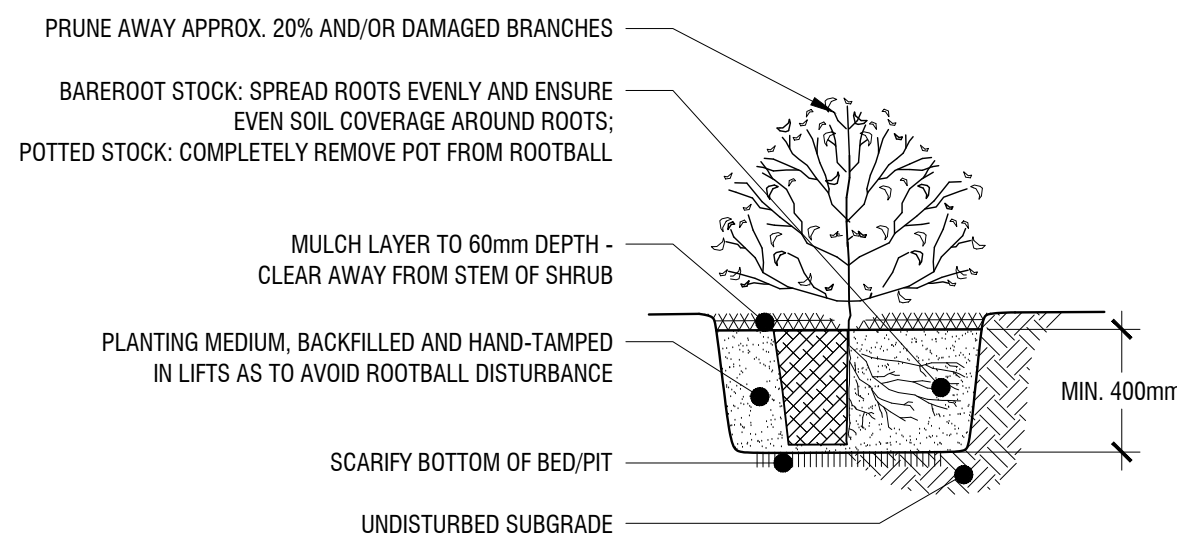
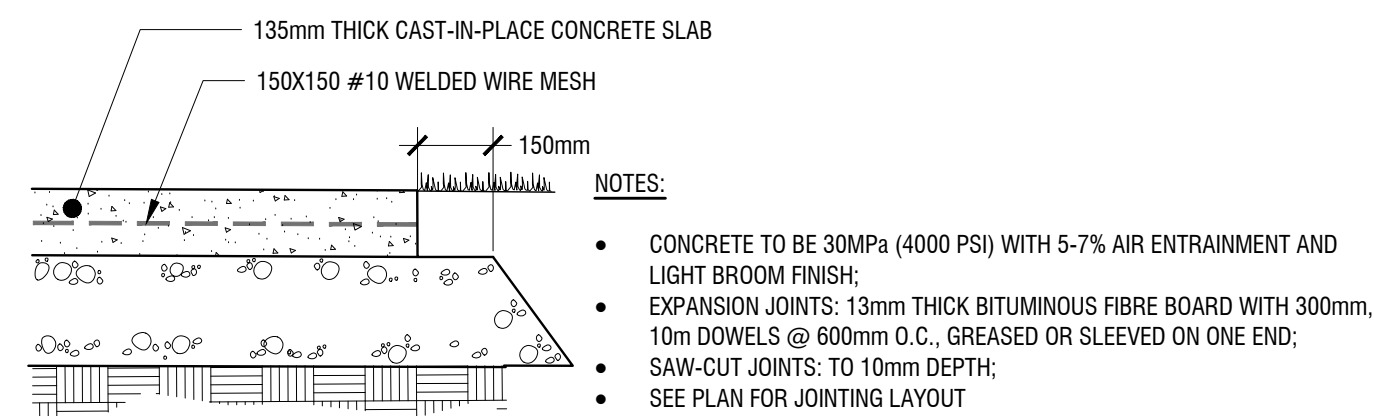
## ALEXANDRE AUBREY

key plan / plan repère

### 3 DECIDUOUS TREE PLANTING DETAIL

L2 1:15

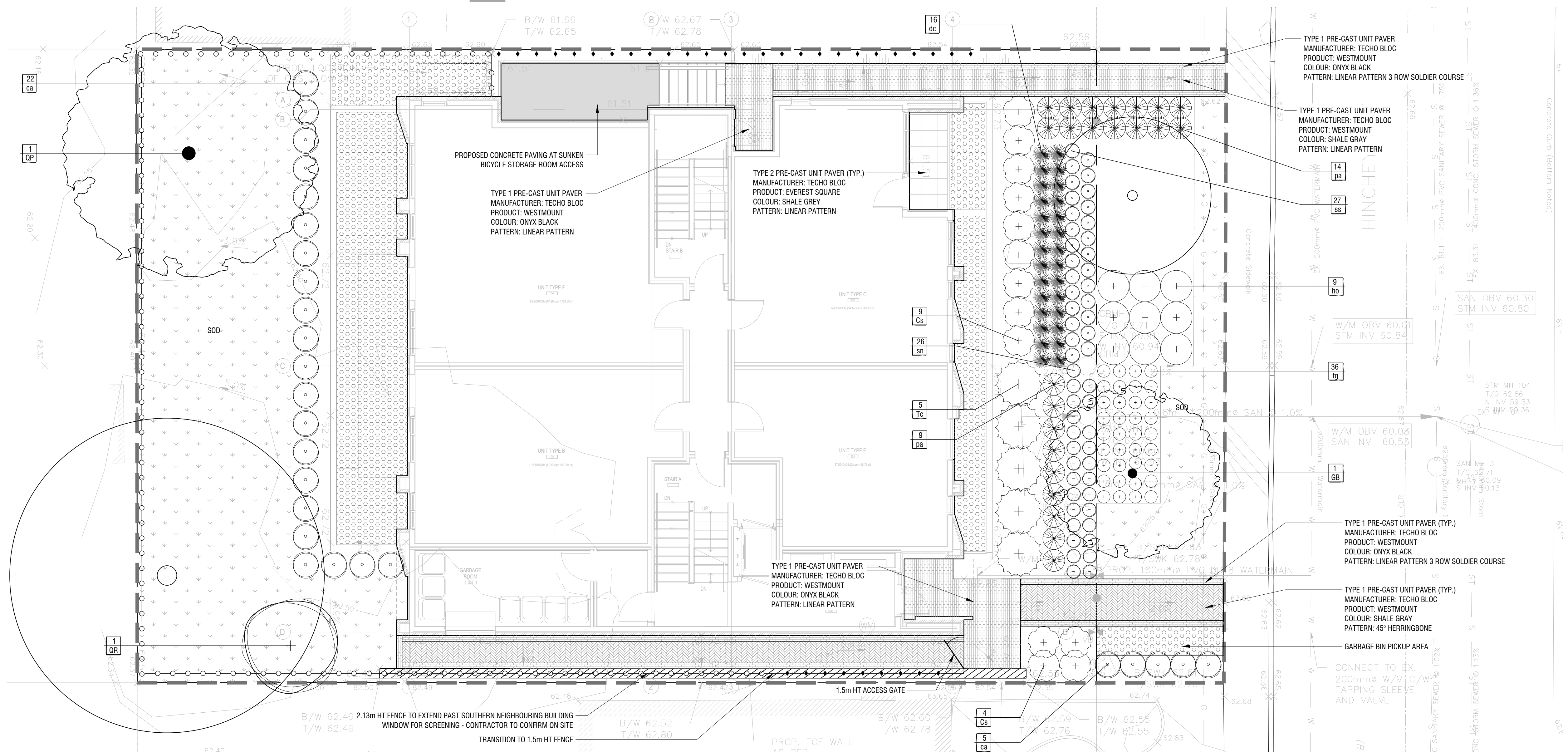
L2	NTS
----	-----



## 4 SHRUB PLANTING

L2 1:15

L2 1:25



2 1:75

PLANTING SCHEDULE				
KEY	QTY.	BOTANICAL NAME	COMMON NAME	SIZE / CONDITION / SPACING
ca	27	Calamagrostis acutiflora 'Karl Foerster'	Feather Reed Grass	#2 Pot / 50cm o.c.
Cs	13	Cornus sericea 'Farrow'	Arctic Fire Dogwood	#3 Pot / 90cm o.c.
dc	28	Deschampsia cespitosa 'Goldtau'	Golden Dew Tufted Hair Grass	#2 pot / 50cm o.c.
fg	36	Festuca glauca 'Elijah Blue'	Elijah Blue Fescue	#1 Pot / 40cm o.c.
GB	1	Ginkgo biloba 'Princeton Sentry®'	Princeton Sentry® Maidenhair Tree	60mm cal. / W.B.
ho	9	Hosta 'Hadsen Blue'	Plantain Lily	#2 Pot / 100cm o.c.
pa	23	Pennisetum alopecuroides 'Hameln'	Dwarf Fountain Grass	#2 Pot / 90cm o.c.
QP	1	Quercus palustris	Pin Oak	70mm cal. W.B.
QR	1	Quercus robur 'Fastigiata'	Pyramidal English Oak	#7 Container
sn	26	Salvia nemorosa 'May Night' (Maimacht)	May Night Meadow Sage	#1 Pot / 50cm o.c.
ss	27	Salvia nemorosa 'Snow Hill' (Schneeheugel)	Snow Hill Sage	#1 Pot / 50cm o.c.
Tc	5	Taxus cuspidata 'Nana'	Dwarf Japanese Yew	#3 Pot / 1.75m o.c

legend / légende

— — — LIMIT OF WORK

### EXISTING TREES TO REMAIN

PROPOSED LARGE DECIDUOUS TREE

PROPOSED SMALL DECIDUOUS TREE



2.13m HIGH WOOD PRIVACY FENC

1.5m HIGH WOOD PRIVACY FENCE  
GUARDRAIL AS REQUIRED

### PROPOSED SHRUB / PERENNIAL PLANTING

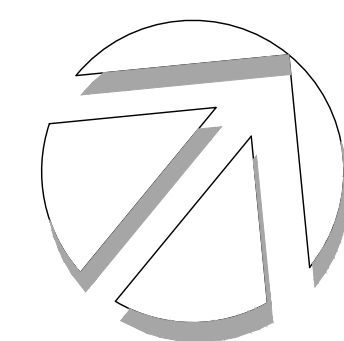
SOD

RIVER ROCK

04	re-issue for Site Plan Submittal #2	2020/09/08
03	re-issue for Site Plan Submittal #2	2020/09/03
02	issue for Site Plan Submittal #2	2020/08/21
01	issue for SPA	2020/03/04
00	issue for client review	2020/02/27
revn	description / la description	yyyy/mm/dd

**FOTENN** Planning + Design  
396 Cooper Street, Suite 300  
Ottawa, ON, CANADA K2P 2H7  
613.730.5703  
fotenn.com

north / le nord

| [stamp](#) / [le cache](#)

project / proje

**250 - 252 HINCHEY AVE.**

drawing / dessin

## LANDSCAPE PLAN

designed / conçu <b>OM</b>	drawn / dessiné <b>OM</b>	reviewed / examiné <b>SP/DF</b>
date <b>JANUARY 2020</b>	project number / No. du projet	
drawing number / No. du dessin		

L2 of 2