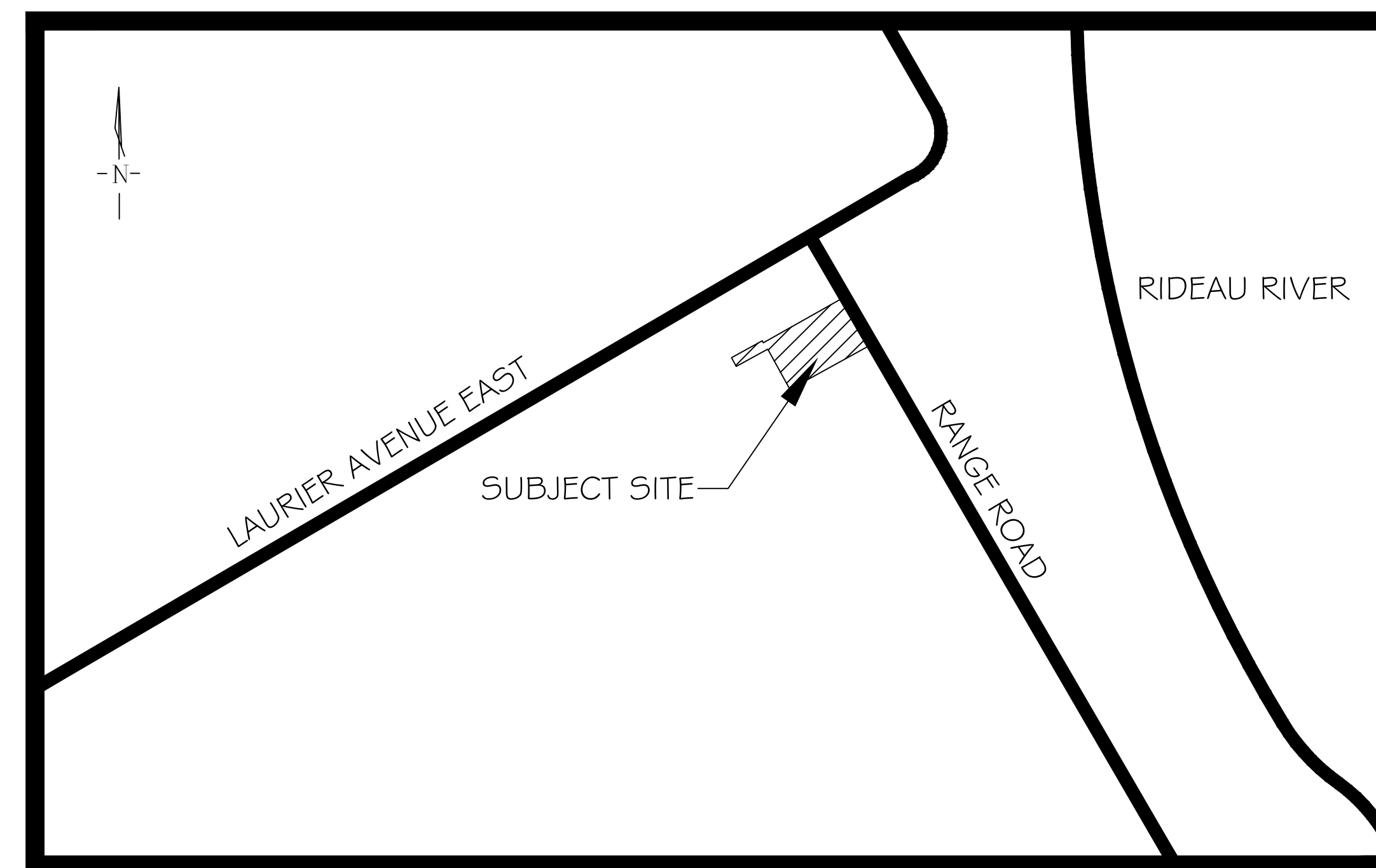


4 RANGE ROAD, OTTAWA, ON

MUNICIPAL FILE:

LANDMARK ENVIRONMENTAL GROUP LTD.

PROJECT NO. LA 473-20



KEY PLAN N.T.S.

DRAWING LIST:

MAP 1	ARBORIST PLAN
MAP 2	ARBORIST PLAN
LP-1	OVERALL LANDSCAPE PLAN
D-1	DETAILS
D-2	DETAILS

CLIENT:

JMCD OTTAWA RANGE ROAD
HOLDINGS INC.
81 PATTERNMEAD CRESCENT
OTTAWA, ON
K1V 0B9

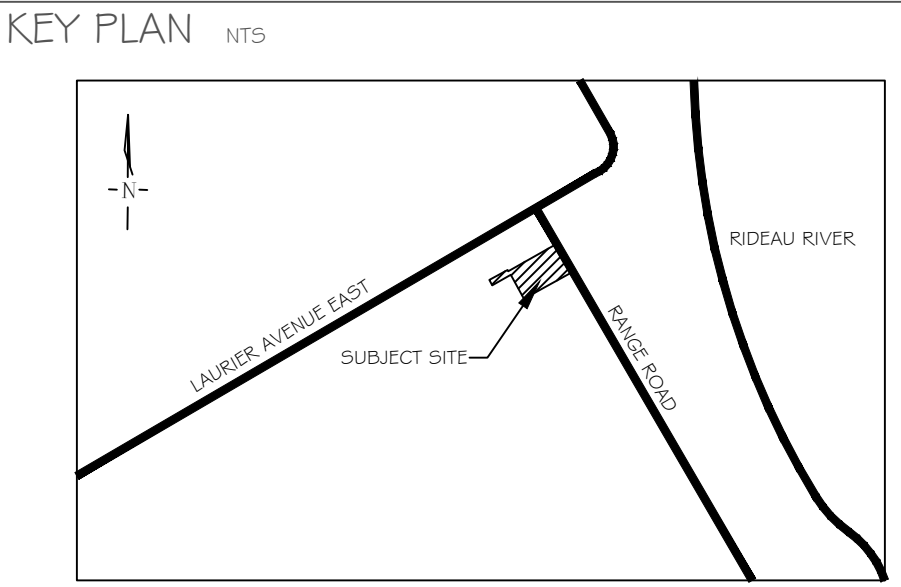
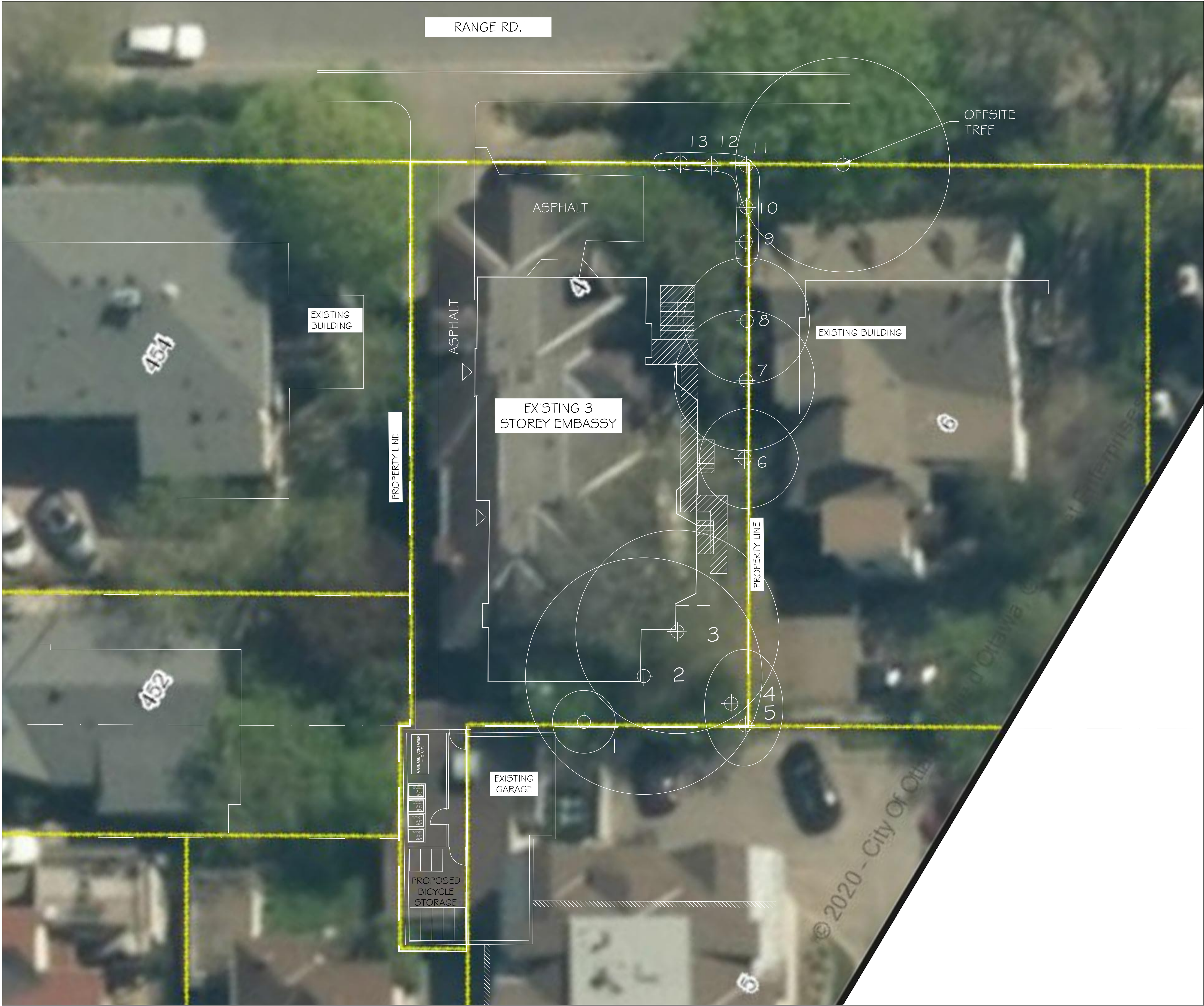
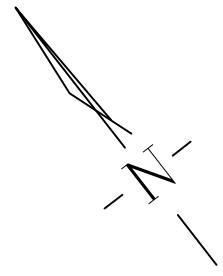
MUNICIPALITY:



CITY OF OTTAWA
110 LAURIER AVENUE WEST,
OTTAWA, ON
K1P 1J1

LANDSCAPE ARCHITECT:

	LANDSCAPE ARCHITECTS & CONSULTING ARBORISTS
	OFFICE: 705-796-1122
	info@LEGroupLtd.com www.LEGroupLtd.com



GENERAL NOTES

The Client and its contractors are responsible for all utility locates and confirming all setbacks, elevations, grades, etc. prior to installation of the constructed works.

The Contractor is to report any discrepancies in writing to the Landscape Architect prior to proceeding with the works to determine the impact and suitability of the proposed works. The Landscape Architect will not be responsible for any unapproved adjustments on site.

Construction of the works must conform to Authority requirements and applicable codes where they have jurisdiction.

All specifications and drawings are instruments of service and are the property and ownership of the Landmark Environmental Group Ltd. As such, the drawings shall not be modified or reproduced without the expressed written consent of Landmark Environmental Group Ltd. or they will be considered void. The said drawings are for Site Plan approval only and may require additional detailing prior to tender and construction.

The Landmark Environmental Group Ltd. is not liable for errors or omissions from the use of these drawings prior to approval, seal, signature and date, and will be considered void.

It is advised that the Contractor contact the Landscape Architect prior to commencement of the construction works to ensure that the Contractor has the latest approved drawings.

The Landmark Environmental Group Ltd. is not responsible for the accuracy of the base drawing information (eg Survey, Architectural, Engineering, etc.). If there are any discrepancies, the Contractor will refer to the appropriate base drawing information and report discrepancies on the Landscape Drawings to the Landscape Architect.

© Drawing set is protected under copyright.

LEGEND

⊕² Tree Location with Canopy

NO.	DATE	BY	REVISIONS
STAMP			
			APPROVAL
			CITY OF OTTAWA
			NAME: _____
			DATE: _____
			SIGNATURE: _____
BASE PLAN PROVIDED BY SHEAN ARCHITECTS INC. (20-069 A00.02 SITEPLAN) REC'D JULY 30-20)			
		LANDSCAPE ARCHITECTS & CONSULTING ARBORISTS	
		OFFICE: 705-796-1122	
		info@LEGroupLtd.com	
		www.LEGroupLtd.com	

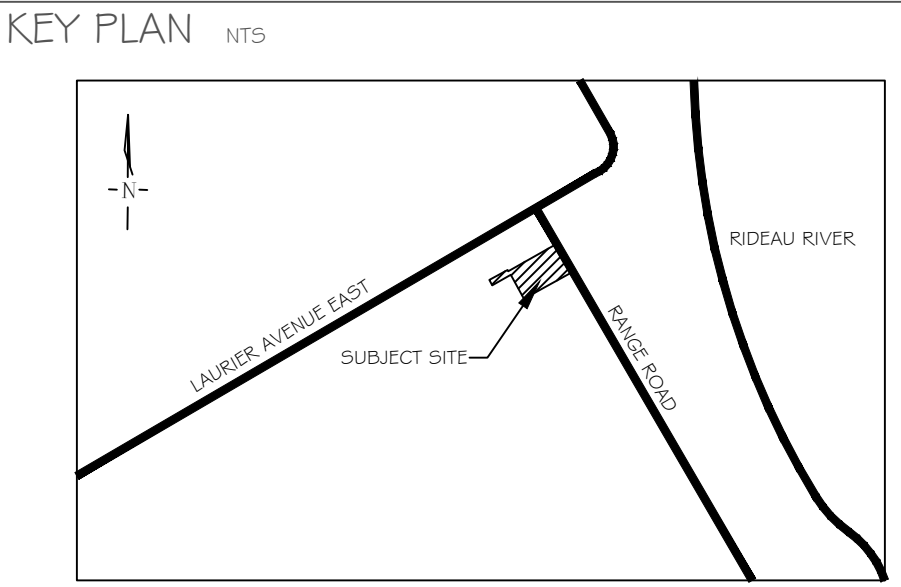
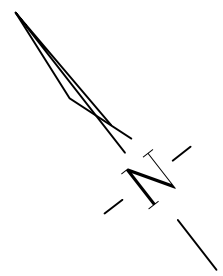
CLIENT: JMCD OTTAWA RANGE ROAD HOLDINGS INC.

PROJECT: 4 RANGE ROAD, OTTAWA, ON

DRAWING: ARBORIST PLAN

SCALE BAR: 2m 0 2 4 6
Scale = 1:100

PROJECT NO.: LA 473-20	SCALE: 1:100
MUNICIPAL FILE NO.:	DATE: June 18, 2020
DRAWN BY: E.F/ K.S	CHECKED BY: J.H
DRAWING No.: MAP-1	



GENERAL NOTES

The Client and its contractors are responsible for all utility locates and confirming all setbacks, elevations, grades, etc. prior to installation of the constructed works.

The Contractor is to report any discrepancies in writing to the Landscape Architect prior to proceeding with the works to determine the impact and suitability of the proposed works. The Landscape Architect will not be responsible for any unapproved adjustments on site.

Construction of the works must conform to Authority requirements and applicable codes where they have jurisdiction.

All specifications and drawings are instruments of service and are the property and ownership of the Landmark Environmental Group Ltd. As such, the drawings shall not be modified or reproduced without the expressed written consent of Landmark Environmental Group Ltd. or they will be considered void. The said drawings are for Site Plan approval only and may require additional detailing prior to tender and construction.

The Landmark Environmental Group Ltd. is not liable for errors or omissions from the use of these drawings prior to approval, seal, signature and date, and will be considered void.

It is advised that the Contractor contact the Landscape Architect prior to commencement of the construction works to ensure that the Contractor has the latest approved drawings.

The Landmark Environmental Group Ltd. is not responsible for the accuracy of the base drawing information (eg Survey, Architectural, Engineering, etc.). If there are any discrepancies, the Contractor will refer to the appropriate base drawing information and report discrepancies on the Landscape Drawings to the Landscape Architect.

© Drawing set is protected under copyright.

- LEGEND**
- Tree Location with Canopy
 - Tree to be Removed
 - Tree Preservation Fencing

NO.	DATE	BY	REVISIONS

STAMP

APPROVAL

CITY OF OTTAWA

NAME: _____

DATE: _____

SIGNATURE: _____

BASE PLAN PROVIDED BY SHEAN ARCHITECTS INC.
(20-069 A00.02 SITEPLAN) REC'D JULY 30-20)

LANDSCAPE ARCHITECTS & CONSULTING ARBORISTS

OFFICE: 705-796-1122

info@LEGroupLtd.com

www.LEGroupLtd.com

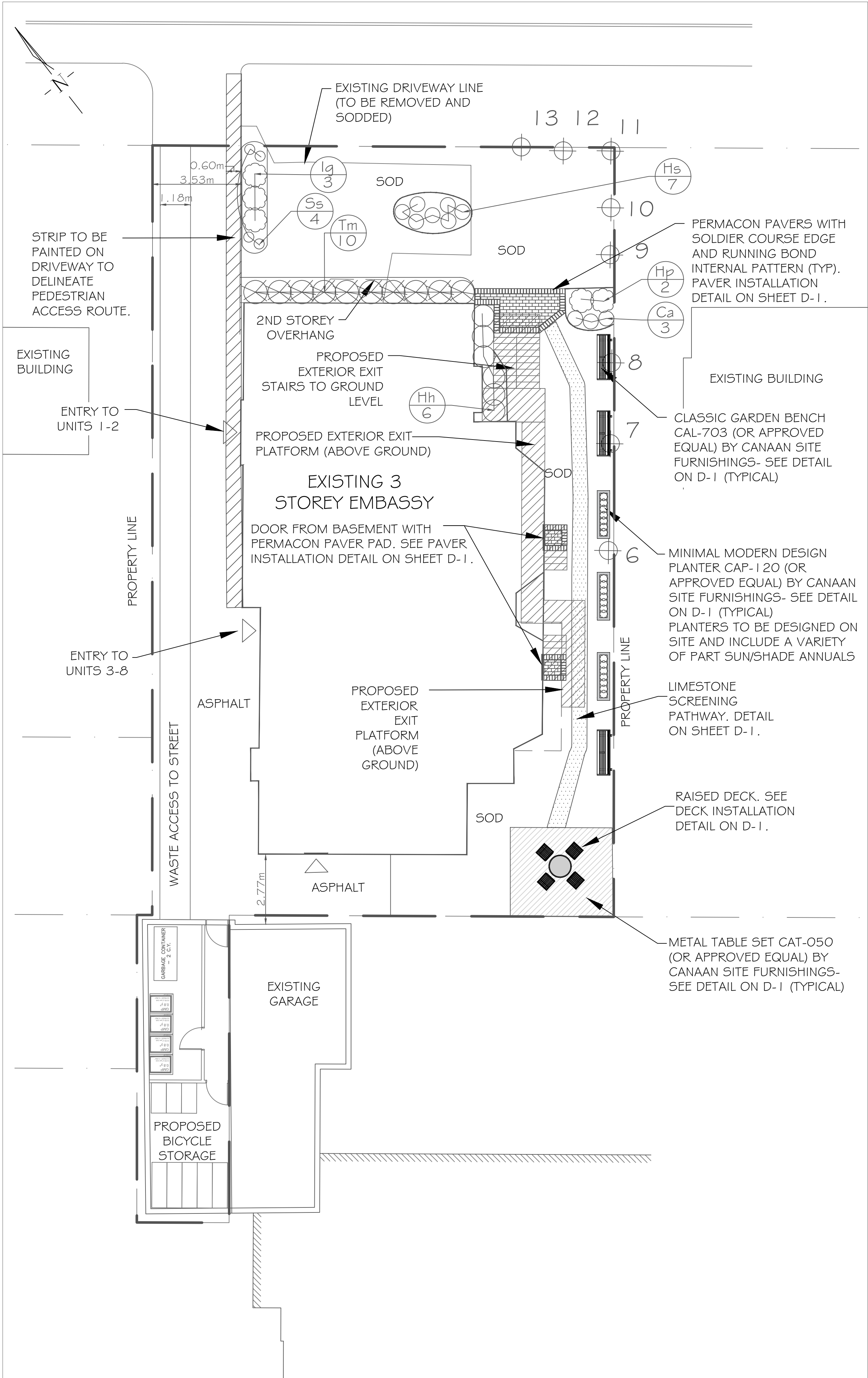
CLIENT: JMCD OTTAWA RANGE ROAD HOLDINGS INC.

PROJECT: 4 RANGE ROAD, OTTAWA, ON

DRAWING: ARBORIST PLAN

SCALE BAR: Scale = 1:100

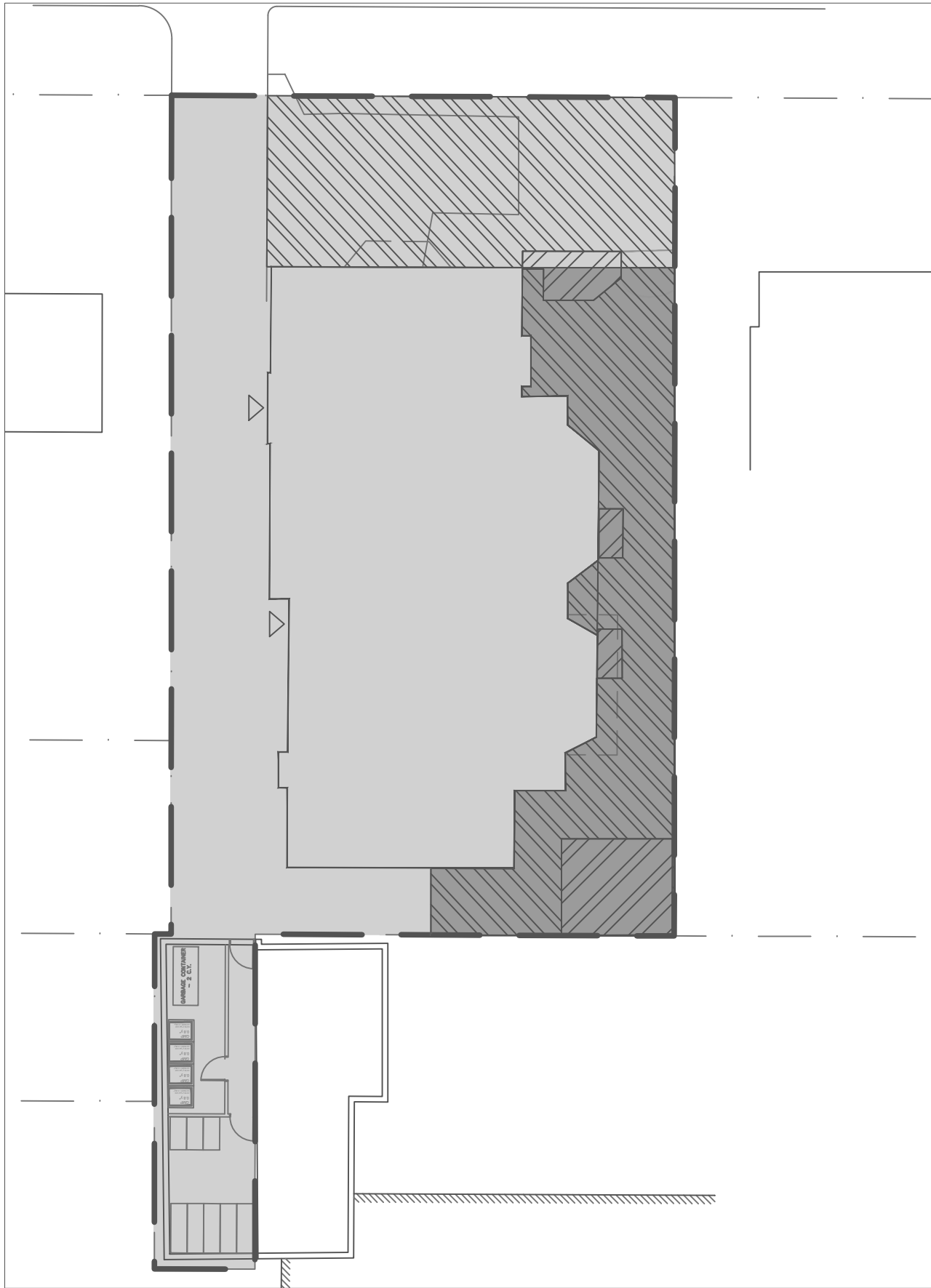
PROJECT NO.: LA 473-20	SCALE: 1:100
MUNICIPAL FILE NO.:	DATE: June 18, 2020
DRAWN BY: E.F/ K.S	CHECKED BY: J.H
DRAWING No.: MAP-2	



PLANT LIST

KEY	QTY	BOTANICAL NAME	COMMON NAME	SIZE/CONDITION
SHRUBS				
Hp	2	Hydrangea paniculata 'ILVOBO'	Bobo Hydrangea	3 gal pot/60cm ht
Ig	3	Ilex glabra 'Shamrock'	Shamrock Inkberry	3 gal pot/60cm ht
Tm	10	Taxus x media 'Densiformis'	Dense Spreading Yew	3 gal pot/60cm ht
PERENNIALS				
Ca	3	Calamagrostis x acutiflora 'Karl Foerster'	Feather Reed Grass	1 gal pot/30cm ht
Hs	7	Hemerocallis 'Stella de Oro'	Stella de Oro Daylily	1 gal pot/30cm ht
Hh	6	Hosta x 'Halcyon'	Halcyon Hosta	1 gal pot/30cm ht
Ss	4	Sedum spectabile 'Neon'	Showy Stonecrop	1 gal pot/30cm ht

SITE AREAS



TOTAL PROPERTY AREA
TOTAL AREA: 602.77m²

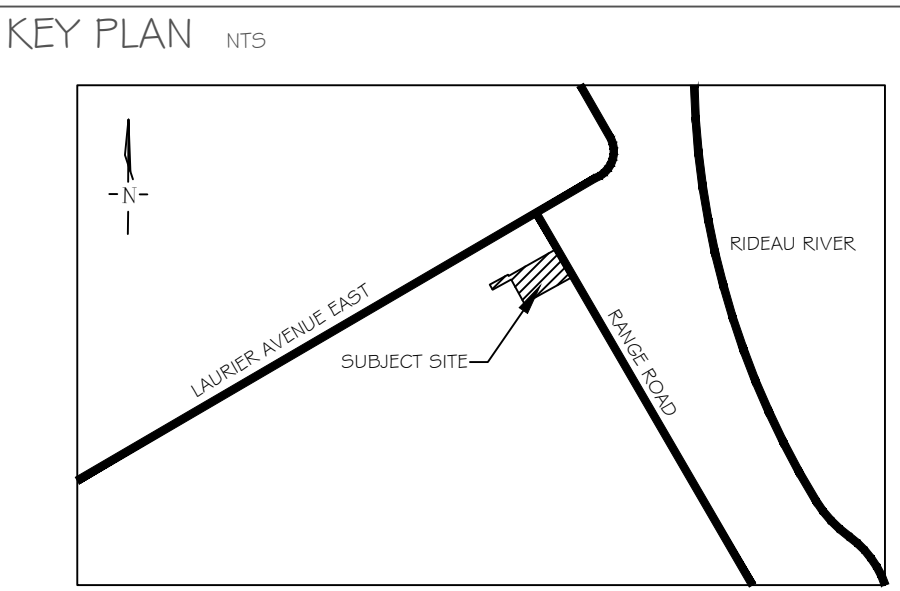
SIDE YARD AMENITY AREA
TOTAL AREA: 109.8m²

HARD LANDSCAPE TREATMENT
TOTAL AREA: 19.5m²

SOFT LANDSCAPE TREATMENT
TOTAL AREA: 178.57m²

SIDE YARD AMENITY AREA
TOTAL AREA: 109.8m²
HARD LANDSCAPE TREATMENT: 20.3 m² (18%)
SOFT LANDSCAPE TREATMENT: 89.5m² (82%)

TOTAL PROPERTY AREA
TOTAL AREA: 602.77m²
PERCENT SIDE YARD AMENITY AREA: 18%
PERCENT SOFT LANDSCAPED TREATMENT: 30%
PERCENT OTHER:
(HARD LANDSCAPE TREATMENT/BUILDINGS/ASPHALT): 70%



GENERAL NOTES

The Client and its contractors are responsible for all utility locates and confirming all setbacks, elevations, grades, etc., prior to installation of the constructed works.

The Contractor is to report any discrepancies in writing to the Landscape Architect prior to proceeding with the works to determine the impact and suitability of the proposed works. The Landscape Architect will not be responsible for any unapproved adjustments on site.

Construction of the works must conform to Authority requirements and applicable codes where they have jurisdiction.

All specifications and drawings are instruments of service and are the property and ownership of the Landmark Environmental Group Ltd. As such, the drawings shall not be modified or reproduced without the expressed written consent of Landmark Environmental Group Ltd. or they will be considered void. The said drawings are for Site Plan approval only and may require additional detailing prior to tender and construction.

The Landmark Environmental Group Ltd. is not liable for errors or omissions from the use of these drawings prior to approval, seal, signature and date, and will be considered void.

It is advised that the Contractor contact the Landscape Architect prior to commencement of the construction works to ensure that the Contractor has the latest approved drawings.

The Landmark Environmental Group Ltd. is not responsible for the accuracy of the base drawing information (eg Survey, Architectural, Engineering, etc.). If there are any discrepancies, the Contractor will refer to the appropriate base drawing information and report discrepancies on the Landscape Drawings to the Landscape Architect.

© Drawing set is protected under copyright.

- LEGEND
- Existing Tree to be Retained
 - Proposed Deciduous Tree
 - Proposed Deciduous Shrubs
 - Proposed Coniferous Shrubs
 - Proposed Perennials
 - Plant Key

NO.	DATE	BY	REVISIONS
STAMP			
		APPROVAL	
		CITY OF OTTAWA	
		NAME: _____	
		DATE: _____	
		SIGNATURE: _____	
BASE PLAN PROVIDED BY SHEAN ARCHITECTS INC. (20-069 A00.02 SITEPLAN) RECVD JULY 30-20)			

LANDSCAPE ARCHITECTS
& CONSULTING ARBORISTS

OFFICE: 705-796-1122

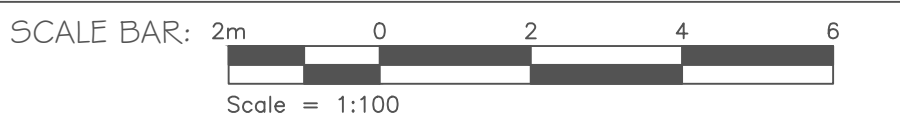
info@LEGroupLtd.com

www.LEGroupLtd.com

CLIENT: JMCD OTTAWA RANGE ROAD HOLDINGS INC.

PROJECT: 4 RANGE ROAD, OTTAWA, ON

DRAWING: OVERALL LANDSCAPE PLAN



PROJECT NO.: LA 473-20	SCALE: 1:100
MUNICIPAL FILE NO.:	DATE: June 18, 2020
DRAWN BY: E.F/ K.S	CHECKED BY: J.H
DRAWING No.: LP-1	

CANAAN
site furnishings

Planter

Model no: CAP-108

Material: Constructured with 100% recycled plastic wood and framed with heavy duty galvanized steel
Finish: Steel components are electrocoated with anti-corrosion treatment, and finished with UV resistant and Canaan 5 Steps Powder Coating electrostatically

Installation: Surface mounted : holes are pre-drilled in each foot for securing to base

Specifications: Light grey recycled plastic wood color

Dimensions: Height: 15.7" / 500 mm

Width: 17.8" / 454 mm

Length: 76.7" / 1950 mm

Top View

Front View

Proprietary and confidential

All rights reserved Canaan Site Furnishings. All drawings, specifications on this page remain the property of Canaan Site Furnishings Inc, and may not be used without Canaan authorization.

Unless otherwise Specified

All measurements are in mm; all measurements are also preliminary and may vary from final plans. We reserve the right to improve, alter or discontinue specifications without notice.

TP: 1-855-330-1133 | Fax: 1-864-806-2355 | www.canoansitefurnishings.com

CANAAN
site furnishings

Metal Picnic Table

Model no: CAT-050

Material:	Constructed with galvanized solid steel
Finish:	Steel components are electrocoated with anti-corrosion treatment, and finished with UV resistant Canaan 5 Steps Powder Coating Electrostatically
Installation:	Surface mounted, holes are pre-drilled in each foot for securing to base
Options:	Choice of powdercoated color
Dimensions:	Wheelchair accessibility and umbrella mount available

Height:	32.8" / 833 mm
Total Length:	96.7" / 2429 mm
Table Top:	35.5" / 893 mm Diameter
Weight:	269 kg / 593 lbs

Top View

Side View

Proprietary and confidential

All the information contained in this drawing is the property of Canaan Inc. Reproduction of the drawing in whole or in part is prohibited without the written consent of Canaan Inc. Copyright © 2015 Canaan Inc. All rights reserved.

Unless otherwise specified

All measurements are in mm; all measurements are also preliminary and may vary from final plans. We reserve the right to improve, alter or discontinue specifications without notice.

ENCLOSURE

Tel: 1-855-330-1133 | Fax: 1-866-806-2355 | www.canaansteel furnishings.com

50mm DEPTH LIMESTONE SCREENING FINES

LANDSCAPE FABRIC

150mm DEPTH GRANULAR 'A' AGGREGATE BASE, INSTALL IN 2 LAYERS ROLL AND STABILIZE AFTER PLACED

4.8mm X 89mm ($\frac{3}{16}$ " X $3\frac{1}{2}$ ") L-SHAPED ALUMINUM FAVING RESTRAINT

LANDSCAPE FABRIC

30cm (12") ALUMINUM STAKES ON EDGING

COMPACTED SUBGRADE TO 98% SPD

NOTE:
PRE-SOAK ALL BASE LAYERS PRIOR TO
INSTALLATING LIMESTONE SCREENINGS FINES

	LIMESTONE SCREENING PATHWAY	
	APED: J.H. DRAWN: K.S.	DATE: JULY 30, 20 SCALE: N.T.S.

4.05m

3.5m

16" O.C.
(406mm)

2"X10" PRESSURE TREATED BEAMS

6"X6" PRESSURE TREATED POSTS

2"X10" PRESSURE TREATED JOISTS

PRESSURE TREATED DECK BOARDS

10" DIA. CONCRETE FOOTINGS

NOTE:
1. ENSURE ALL METAL FASTENERS
ARE APPROPRIATE FOR PRESSURE
TREATED WOOD CHOSEN.
2. CONCRETE FOOTINGS TO
EXTEND BELOW FROST LINE AS PER
CODE.

0.35m

PRESSURE TREATED DECK BOARD

2"X10" PRESSURE TREATED BEAM

2"X10" PRESSURE TREATED JOIST HANGER

THROUGH BOLTS

6"X 6" PRESSURE TREATED POST

POST ANCHOR

CONCRETE FOOTING

LANDMARK
ENVIRONMENTAL CREDIT LTD.

DECK INSTALLATION DETAIL

APR'D: J.H.	DATE: JULY 30, 2020
DRAWN: K.S.	SCALE: N.T.S.

GENERAL NOTES

The Client and its contractors are responsible for all utility locates and confirming all setbacks, elevations, grades, etc. prior to installation of the constructed works.

The Contractor is to report any discrepancies in writing to the Landscape Architect prior to proceeding with the works to determine the impact and suitability of the proposed works. The Landscape Architect will not be responsible for any unapproved adjustments on site.

Construction of the works must conform to Authority requirements and applicable codes where they have jurisdiction.

All specifications and drawings are instruments of service and are the property and copyright of the Landscape Environmental Group Ltd. As such, the drawings shall not be modified or reproduced without the expressed written consent of Landscape Environmental Group Ltd. or they will be considered void. The said drawings are for Site Plan approval only and may require additional detailing prior to tender and construction.

The Landscape Environmental Group Ltd. is not liable for errors or omissions from the use of these drawings prior to approval, seal, signature and date, and will be considered void.

It is advised that the Contractor contact the Landscape Architect prior to commencement of the construction works to ensure that the Contractor has the latest approved drawings.

The Landscape Environmental Group Ltd. is not responsible for the accuracy of the base drawing information (eg Survey, Architectural, Engineering, etcO). There are any discrepancies, the Contractor will refer to the appropriate base drawing information and report discrepancies on the Landscape Drawings to the Landscape Architect.

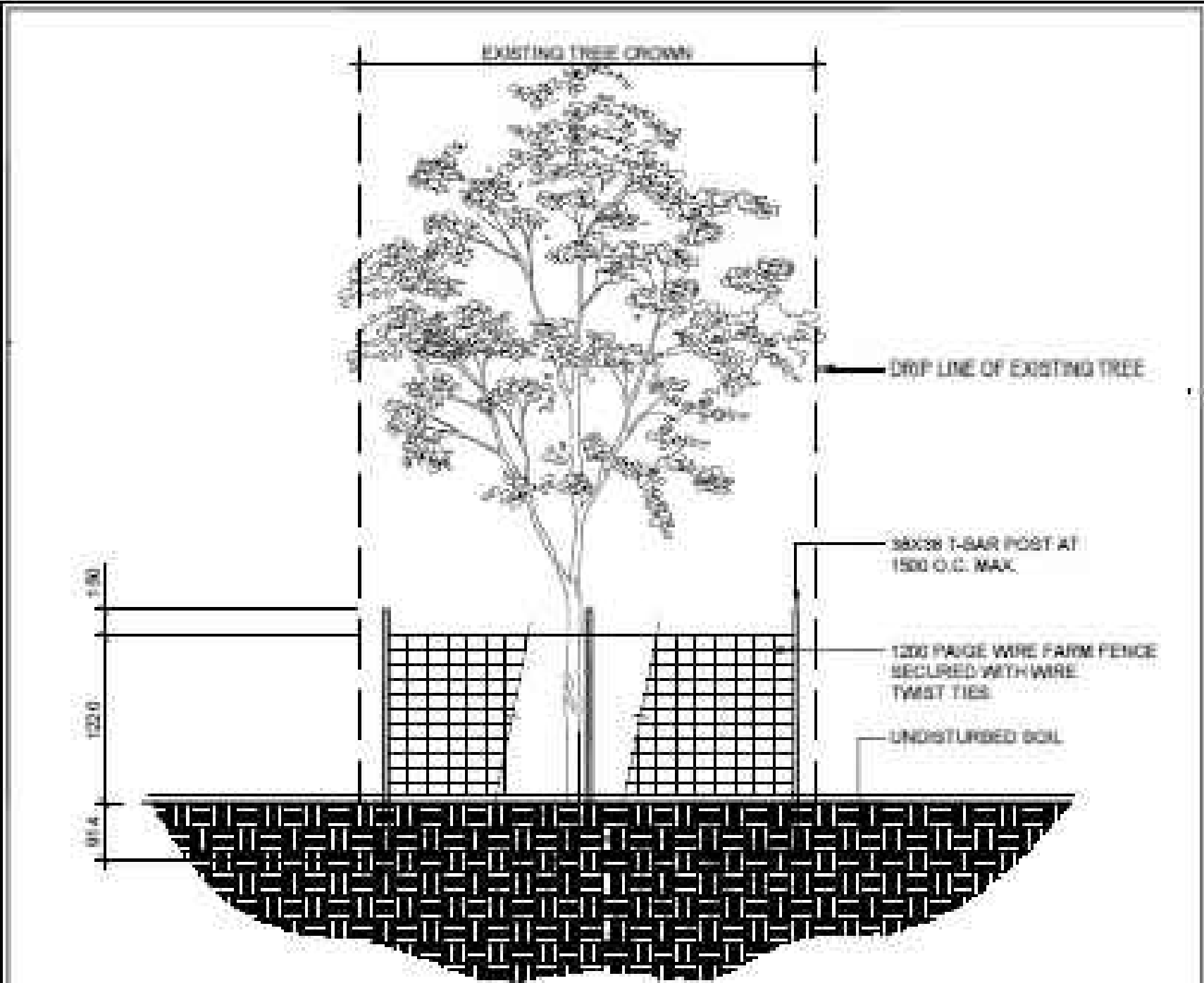
© Drawing set is protected under copyright.

[illegible]

1. The Contractor shall review all information in all drawings details and specifications and report any discrepancies to the Landscape Architect in writing prior to commencement of works.
2. All planting and related work shall be completed by experienced personnel under the direction and supervision of a qualified foreman.
3. All plant material which cannot be planted immediately will be properly heeled in or covered with a similar material which will keep root surfaces moist until planted.
4. All plant material and operations shall meet or exceed current horticultural standards of the Canadian Nursery Landscape Association. All plant material to be No. 1 Grade Nursery Stock. All unsatisfactory stock including field grown will be refused on site.
5. The Landscape Architect reserves the right to reject any material, plantings and sod prior to or after installation which does not conform to approved specifications in accordance with approved details. The Contractor will be asked to remove any unapproved material which does not conform to specifications unless there is prior written agreement with the Landscape Architect.
6. Trees and shrubs shall have an uncut, strong central leader, be sound, healthy, vigorous, well-branched, densely foliated, free of disease, insects and have well-developed root systems.
7. Where applicable, sod to be Canada No. 1 Nursery Sod, meeting Ontario Sod Growers Association Standards. All Areas to receive 100mm minimum depth of topsoil under sod unless otherwise indicated. See Drawings and Specifications for areas to be mulched.

8. The Contractor shall stake out all planting locations for approval by the Landscape Architect or Contract Administrator prior to planting. Where dimensions are not provided, the drawing may be scaled ONLY to determine approximate locations of plant material. Dimensions are in millimeters unless otherwise stated.
9. All mass plantings shall be in continuous beds with mulch as specified in planting details.
10. All planting will be under warranty by the Contractor for a minimum of 1 year. The Contractor shall water at time of planting and whenever deemed necessary to maintain trees in a healthy condition. Apply aqueous fertilizer in a ratio of 10-6-4 in accordance with manufacturers instructions. Sod, where specified, to be maintained and guaranteed until established, minimum after two mowings.
11. Unwrap or do not wrap tree trunks. Stake trees in accordance with required specifications.
12. Provide sufficient rodent protection on all new planting so as to deter bark or shoot damage by rodents. Significant rodent damage, as determined by the Landscape Architect will require plant replacement.





NOTES:

1. THE AREA WITHIN THE DRIPLINE OF ALL EXISTING TREES SHALL BE PROPERLY PROTECTED WITH TEMPORARY FENCING AS PER THE APPROVED LANDSCAPE PLAN.
2. THE SURVEY SHALL SHOW EXISTING ELEVATION AT BASE OF ALL TREES TO BE PRESERVED AS SHOWN BY "v".
3. THE AREA WITHIN THE PROTECTED FENCING SHALL REMAIN UNDISTURBED AND SHALL NOT BE USED FOR THE STORAGE OF BUILDING MATERIALS OR EQUIPMENT. REMOVE ALL DEBRIS.
4. PRUNE BRANCHES TO REMOVE DAMAGED OR OBJECTIONABLE BRANCHES. DO NOT PRUNE LEADERS.
5. TREE PROTECTION SHALL REMAIN UNTIL SUBSTANTIAL PERFORMANCE OF THE PROJECT.
6. IF CUTTING OF ROOTS OR CHANGING OF GRADES AROUND EXISTING TREES IS CALLED FOR, FOLLOW APPROPRIATE DETAILS AS DIRECTED BY LANDSCAPE ARCHITECT.
7. IF TREES ARE BEING AFFECTED BY CONSTRUCTION, A WATER AND FERTILIZING PROGRAM WILL BE REQUIRED TO THE SATISFACTION OF THE CITY.



TITLE: **TREE PRESERVATION
PROTECTION FENCE**

DATE: MAR 2020
SCALE: N.T.S.
DRAWING: PB-01

TREE PRESERVATION NOTES

1. THE INTENT OF THE TREE PRESERVATION PLAN IS TO PROVIDE PROTECTION AND PRESERVATION FOR EXISTING TREES ON THE SUBJECT PROPERTY. THEREFORE, ALL TREES ARE TO BE PRESERVED UNLESS OTHERWISE INDICATED IN THE PLAN OR THE ARBORIST'S REPORT. CONTACT THE LANDSCAPE ARCHITECT TO CONFIRM THE REMOVAL/RETENTION STATUS OF ANY TREES ON SITE, PRIOR TO CLEARING AND GRUBBING. THE OWNER WILL TAKE EVERY PRECAUTION TO PROTECT AND PRESERVE THE TREES APPROVED TO BE RETAINED IN ACCORDANCE WITH THE APPROVED PLANS.

2. PRIOR TO THE COMMENCEMENT OF ANY CLEARING, GRUBBING OR CONSTRUCTION WORKS, THE REQUIRED HOARDING WILL BE ERECTED 5M OUTSIDE OF THE OUTERMOST DRIPLINE OF ANY TREE TO BE RETAINED, IN ACCORDANCE WITH THE HOARDING DETAIL, AND TO THE SATISFACTION OF THE LANDSCAPE ARCHITECT. ERECTION OF ANY PROTECTION FENCING LESS THAN 5M SHALL BE UNDER THE DIRECTION OF THE LANDSCAPE ARCHITECT.

3. IT IS THE RESPONSIBILITY OF THE CONTRACTOR TO ERECT AND MAINTAIN ALL HOARDING AS PER THE APPROVED DETAIL, PRESERVATION NOTES AND LOCATIONS SHOWN ON THE DRAWINGS.

4. NO STORAGE OF EQUIPMENT OR VEHICLES, NOR ANY STOCKPILING OF MATERIAL IS TO OCCUR WITHIN THE AREA OF PRESERVATION/PROTECTION. TREES SLATED FOR PROTECTION WILL NOT BE USED FOR RIGGING OR WRAPPING. THE PROTECTION/PRESERVATION AREA SHALL NOT BE USED TO EMPTY CONTAMINANTS, REFUELING OR REPAIR OF VEHICLES OR EQUIPMENT.

5. TREES LOCATED ON THE IMMEDIATE EDGE OF THE CONSTRUCTION WORKS ARE TO BE PRUNED IN THE INTEREST OF SAFETY, IN ACCORDANCE WITH APPROVED ARBORICULTURAL PRACTICES.

6. TREE LOCATIONS ARE APPROXIMATE AND THEREFORE VERIFICATION ON SITE IS REQUIRED.

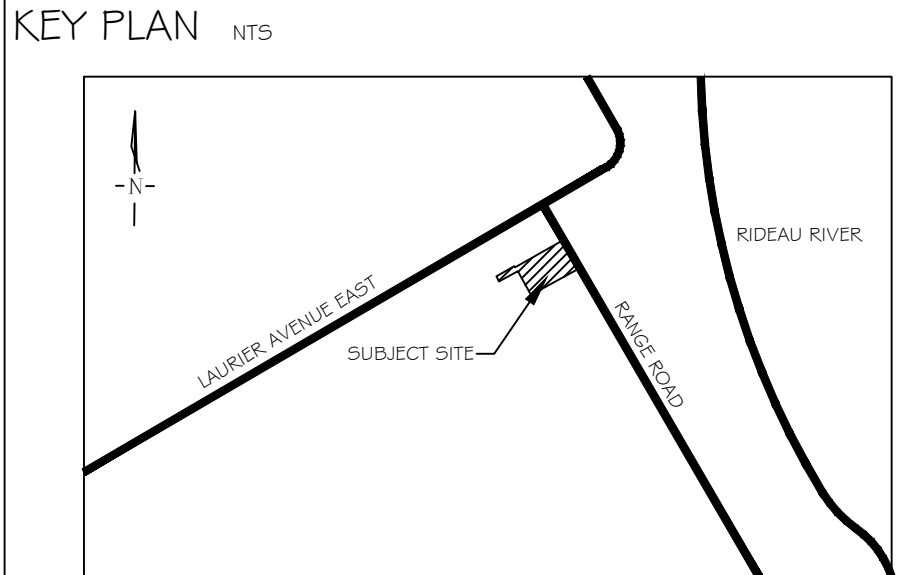
7. SHOULD A TREE REQUIRED TO BE PROTECTED BECOME DAMAGED OR REMOVED WITHOUT WRITTEN PERMISSION OF THE CITY OF OTTAWA OR THE LANDSCAPE ARCHITECT, THE CONTRACTOR OR OWNER WILL BE RESPONSIBLE FOR REPLACEMENT OF THE TREE OF EQUAL CALIPER AND ACCEPTABLE TREE SPECIES AT THE DISCRETION AND SATISFACTION OF THE LANDSCAPE ARCHITECT.

8. THE WORK COMPLETED BY THE CONTRACTOR WILL NOT CAUSE OR EXACERBATE FLOODING CONDITIONS OR CAUSE SEDIMENT BUILDUP OVER THE ROOTZONE OF PROTECTED TREES. NO GRADING SHALL TAKE PLACE WITHIN THE TREE PRESERVATION AREA UNLESS OTHERWISE APPROVED BY THE LANDSCAPE ARCHITECT.

9. ANY REQUIRED LIMB TRIMMING SHALL BE UNDER THE DIRECT SUPERVISION OF THE LANDSCAPE ARCHITECT OR A QUALIFIED ARBORIST.

10. PRESERVATION FENCING TO BE INSTALLED IN ACCORDANCE WITH THE APPROVED DETAIL. FILTER FABRIC TO BE INSTALLED IN CONJUNCTION WITH THE APPROVED ENGINEERING DRAWINGS.

11. HOARDING/TREE PRESERVATION MAY BE COMPLETED IN CONJUNCTION WITH SEDIMENTATION CONTROL.



GENERAL NOTES

The Client and its contractors are responsible for all utility locates and confirming all setbacks, elevations, grades, etc. prior to installation of the constructed works.

The Contractor is to report any discrepancies in writing to the Landscape Architect prior to proceeding with the works to determine the impact and suitability of the proposed works. The Landscape Architect will not be responsible for any unapproved adjustments on site.

Construction of the works must conform to Authority requirements and applicable codes where they have jurisdiction.

All specifications and drawings are instruments of service and are the property and ownership of the Landmark Environmental Group Ltd. As such, the drawings shall not be modified or reproduced without the expressed written consent of Landmark Environmental Group Ltd. or they will be considered void. The said drawings are for Site Plan approval only and may require additional detailing prior to tender and construction.

The Landmark Environmental Group Ltd. is not liable for errors or omissions from the use of these drawings prior to approval, seal, signature and date, and will be considered void.

It is advised that the Contractor contact the Landscape Architect prior to commencement of the construction works to ensure that the Contractor has the latest approved drawings.

The Landmark Environmental Group Ltd. is not responsible for the accuracy of the base drawing information (eg Survey, Architectural, Engineering, etc.). If there are any discrepancies, the Contractor will refer to the appropriate base drawing information and report discrepancies on the Landscape Drawings to the Landscape Architect.

© Drawing set is protected under copywrite.

LEGEND

NO.	DATE	BY	REVISIONS
STAMP			
		APPROVAL CITY OF OTTAWA NAME _____ DATE _____ SIGNATURE _____	
<div><div></div><div>LANDSCAPE ARCHITECTS & CONSULTING ARBORISTS OFFICE: 705-796-1122 info@LEGroupLtd.com www.LEGroupLtd.com</div></div>			
CLIENT: JMCD OTTAWA RANGE ROAD HOLDINGS INC.			
PROJECT: 4 RANGE ROAD, OTTAWA, ON			
DRAWING: DETAILS			
SCALE BAR:			
PROJECT NO.: LA 473-20		SCALE: N.T.S.	
MUNICIPAL FILE NO.:		DATE: June 18, 2020	
DRAWN BY: E.F/ K.S		CHECKED BY: J.H DRAWING No.: D-1	