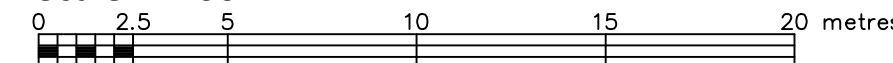


NORTH HALF OF THE WEST HALF OF LOT 18
JUNCTION GORE
GEOGRAPHIC TOWNSHIP OF GLOUCESTER
CITY OF OTTAWA

FARLEY, SMITH & DENIS SURVEYING LTD. 2016

Scale 1: 200



Metric Note

Distances and coordinates on this plan are in metres and can be converted to feet by dividing by 0.3048.

Distance Note

Distances shown on this plan are ground distances and can be converted to grid distances by multiplying by the combined scale factor of 0.999946.

Bearing Note

Bearings are grid, derived from Can-Net 3.0 Real Time Network GPS observations on reference points A and B, shown hereon, having a bearing of N17°02'25"W and are referenced to Specified Control Points 01919680005 and 01919680105, MTM Zone 9 (76°30' West Longitude) NAD-83 (original).

For bearing comparison a rotation of 00°01'15" counter-clockwise has been applied to bearings on P1, P2, & P3.

Elevation Notes

- 1. Elevations shown are geodetic and are referred to vertical control monument No. 3636, index No. 346 being a tablet in a concrete foundation wall of the City of Ottawa Waterworks Department Pumping Station near the Junction of Bank Street and Riverside Drive, having a published elevation of 59.16m as per File # 25-00 by FSD dated February 16, 2000.
- 2. It is the responsibility of the user of this information to verify that the job benchmark has not been altered or disturbed and that its relative elevation and description agrees with the information shown on this drawing.

Utility Notes

- 1. This drawing cannot be accepted as acknowledging all of the utilities and it will be the responsibility of the user to contact the respective utility authorities for confirmation.
- 2. Only visible surface utilities were located.
- 3. Underground utility data derived from City of Ottawa utility sheet references: Plans I-12-08, Plan L30b-1, and DWG No. F31e-3, F31d-2, S-126 #2268 & 13911.
- 4. Sanitary and storm sewer grades and inverts were compiled from: City of Ottawa
- 5. A field location of underground plant by the pertinent utility authority is mandatory before any work involving breaking ground, probing, excavating etc.

Notes & Legend

□	Survey Monument Planted	○ UP	Utility Pole
■	Survey Monument Found	○ AN	Anchor
SIB	Standard Iron Bar	○ LS	Light Standard
SSIB	Short Standard Iron Bar	○ VC	Valve Chamber (Watermain)
IB	Iron Bar	○ WV	Water Valve
CP	Concrete Pin	○ FH	Fire Hydrant
(Wit)	Witness	○ TS	Traffic Signal Post
Meas	Measured	○ B	Bollard
(P1)	Plan 5R-4615	○ M-W	Monitoring Well
(P2)	4R-12718		
(P3)	Plan by (857) Dated October 3, 1997		
(P4)	5R-13457		
(P5)	Plan by (AOG) Dated July 2, 1980		
1287/FSM	Farley, Smith & Murray Surveying Ltd.		
1692/FSD	Farley, Smith & Denis Surveying Ltd.		
Deed	INST No' N687501		
○ MH-ST	Maintenance Hole (Storm)		
○ MH-S	Maintenance Hole (Sanitary)		
○ MH-H	Maintenance Hole (Hydro)		
— ST	Underground Storm Sewer		
— S	Underground Sanitary Sewer		
— W	Underground Water		
— B	Underground Bell	City Inv.	Denotes Invert Obtained from City of Ottawa Utility Plans
— G	Underground Gas		
— P	Underground Power	T/G	Top of Grate
— OHW	Overhead Wires	○	Diameter

Revision Note No. 1

This plan has been revised to additional topographic information at the intersection of Riverside Drive (South) and Bank Street and to revise Local Benchmark location and elevation.

January 27, 2017
Date

Ronald A. Denis
Ronald A. Denis
Ontario Land Surveyor

Surveyor's Certificate

- I certify that:
- 1. This survey and plan are correct and in accordance with the Surveys Act, the Surveyors Act and the Regulations made under them.
- 2. The survey was completed on the 23rd day of August, 2016.

August 30, 2016
Date

Ronald A. Denis
Ronald A. Denis
Ontario Land Surveyor

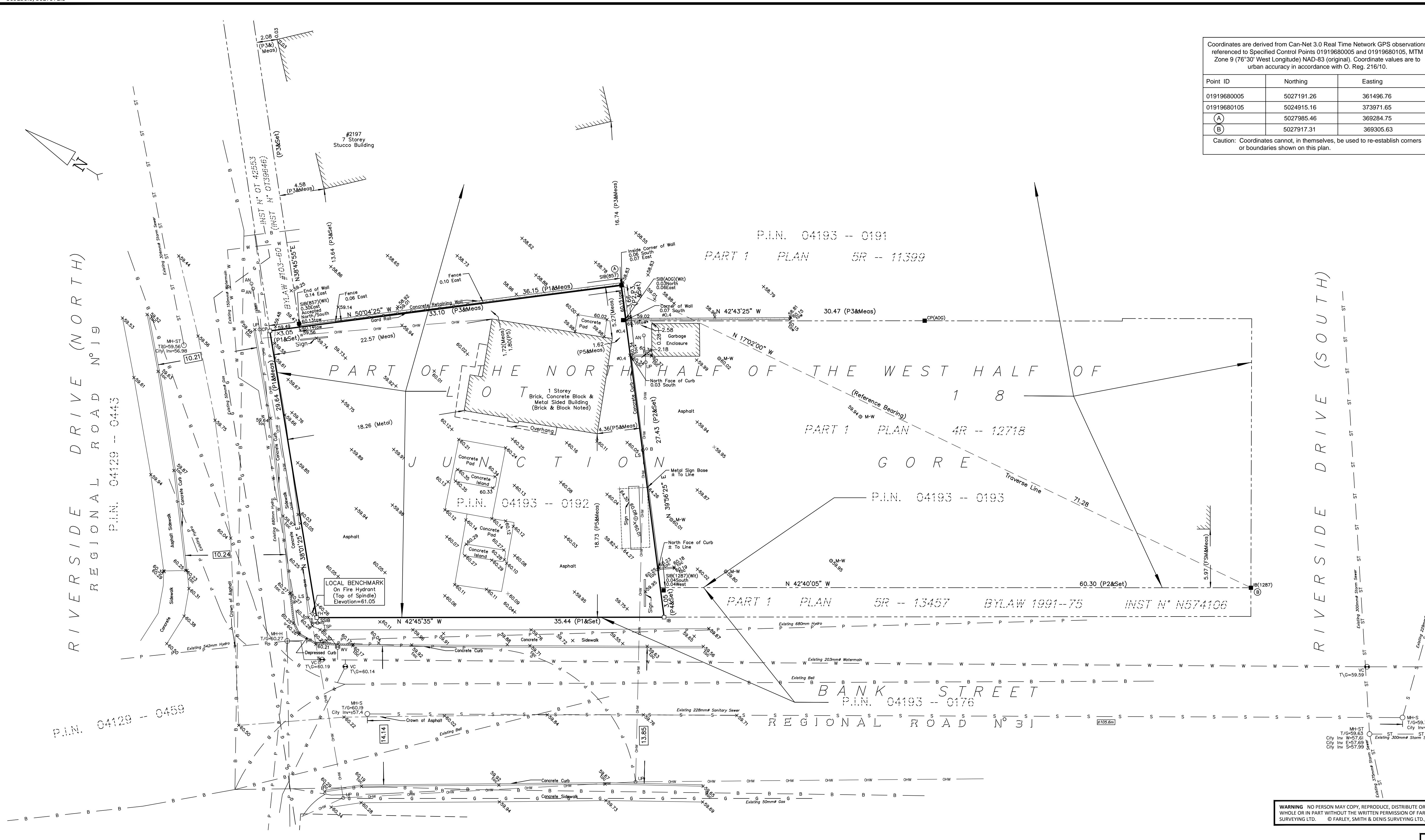
FARLEY, SMITH & DENIS SURVEYING LTD.

ONTARIO LAND SURVEYORS
CANADA LAND SURVEYORS
190 COLONNADE ROAD, OTTAWA, ONTARIO K2E 7J5
TEL. (613) 727-8226 FAX. (613) 727-1826

Coordinates are derived from Can-Net 3.0 Real Time Network GPS observations referenced to Specified Control Points 01919680005 and 01919680105, MTM Zone 9 (76°30' West Longitude) NAD-83 (original). Coordinate values are to urban accuracy in accordance with O. Reg. 216/10.

Point ID	Northing	Easting
01919680005	5027191.26	361496.76
01919680105	5024915.16	373971.65
(A)	5027985.46	369284.75
(B)	5027917.31	369305.63

Caution: Coordinates cannot, in themselves, be used to re-establish corners or boundaries shown on this plan.



WARNING NO PERSON MAY COPY, REPRODUCE, DISTRIBUTE OR ALTER THIS PLAN IN WHOLE OR IN PART WITHOUT THE WRITTEN PERMISSION OF FARLEY, SMITH & DENIS SURVEYING LTD. © FARLEY, SMITH & DENIS SURVEYING LTD., 2016.