

OWNER:
 NIVO DEVELOPMENTS INC.
 255 MICHAEL COMPLAND DRIVE
 OTTAWA, ONTARIO, K2M 0M5
 613-224-6200

REFER TO DRAWING C-1 AND NOTES &
 DETAILS ON DRAWINGS C-6 & C-7

DRAWING LEGEND

- CB CATCH BASIN
- MH MANHOLE
- CB/MH CATCH BASIN/MANHOLE
- SPL SPRINGLINE OF PIPE
- INV INVERT OF PIPE
- SAN SANITARY SEWER
- ST STORM SEWER
- WS/MM WATER SERVICE/WATERMAIN
- CS CURB STOP & STANDPOST
- VB VALVE & VALVE BOX
- FH FIRE HYDRANT
- WATER METER
- REMOTE WATER METER READOUT
- EXISTING GRADE ELEVATION
- PROPERTY LINE
- 150mm CURB/DEPRESSED CURB
- FFL FIRST FLOOR ELEVATION
- TOP OF FOUNDATION
- BFL BASEMENT FLOOR ELEVATION
- USF UNDERSIDE OF FOOTING

KEY PLAN



| No. | DATE | REVISION |
|-----|-----------|------------------------|
| 1 | JUN 14-19 | PRELIMINARY |
| 2 | AUG 9-19 | ISSUED FOR APPROVAL |
| 3 | SEP 27-19 | RE-ISSUED FOR APPROVAL |
| 4 | JUN 18-20 | RE-ISSUED FOR APPROVAL |

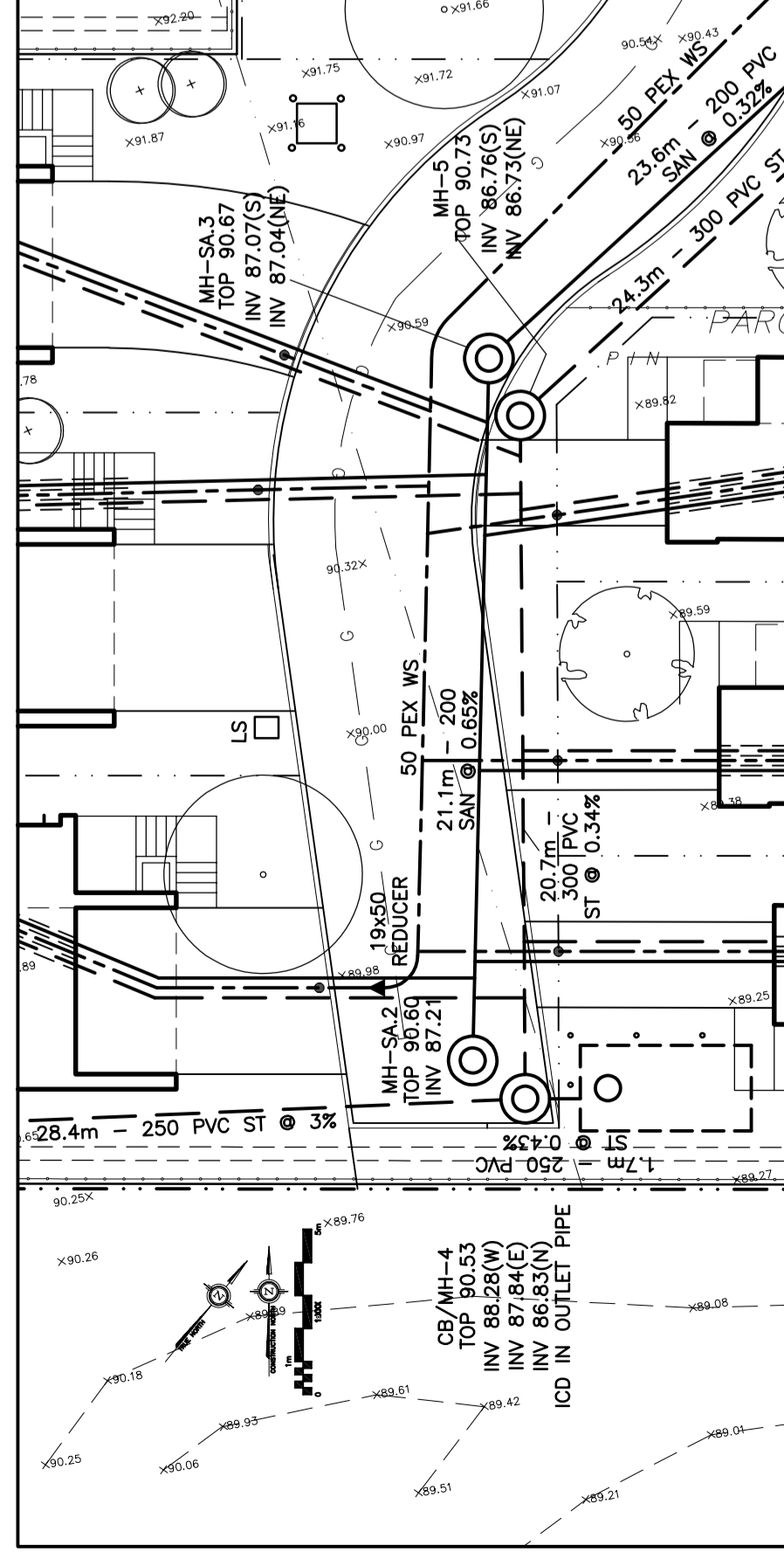
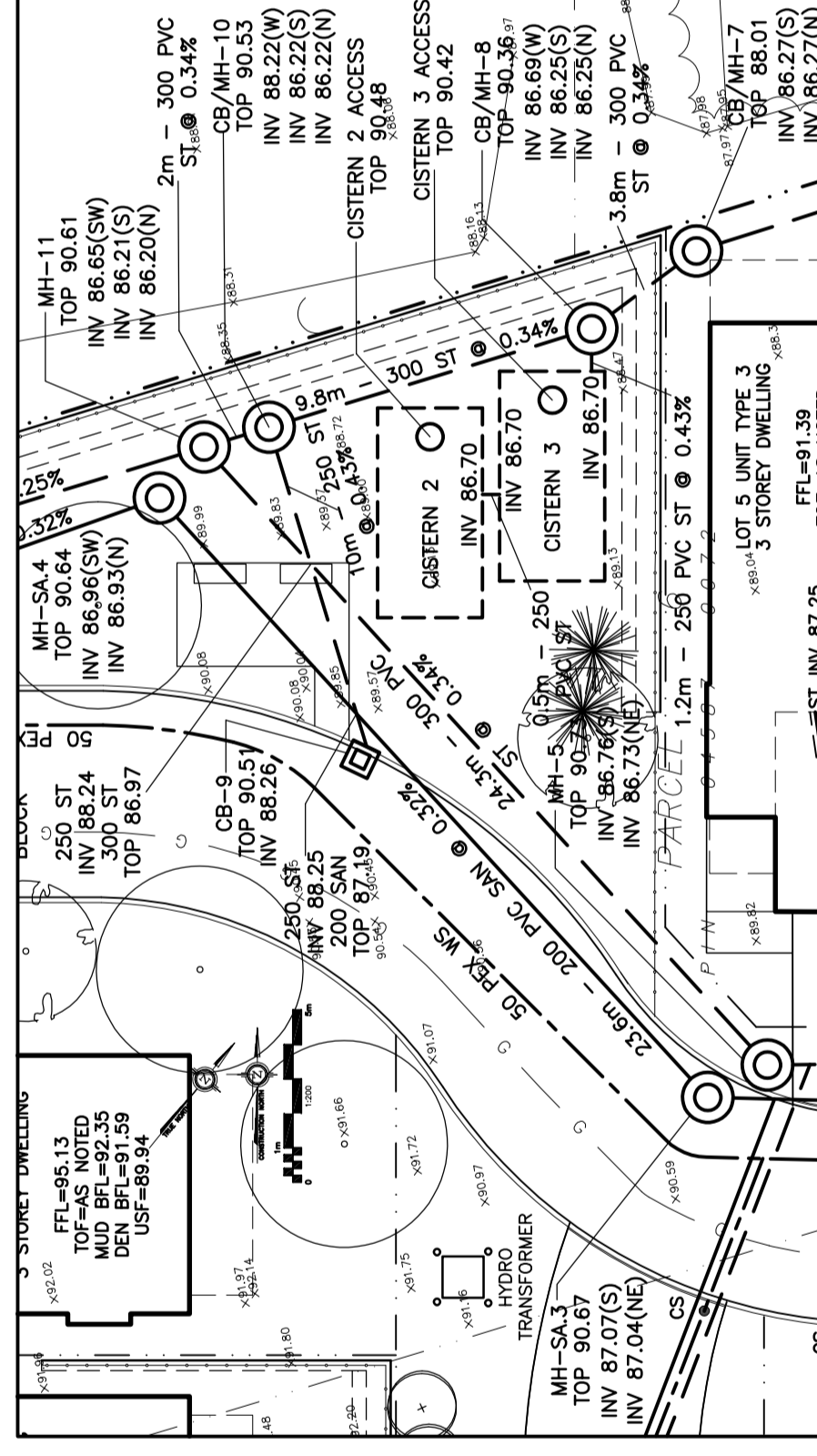
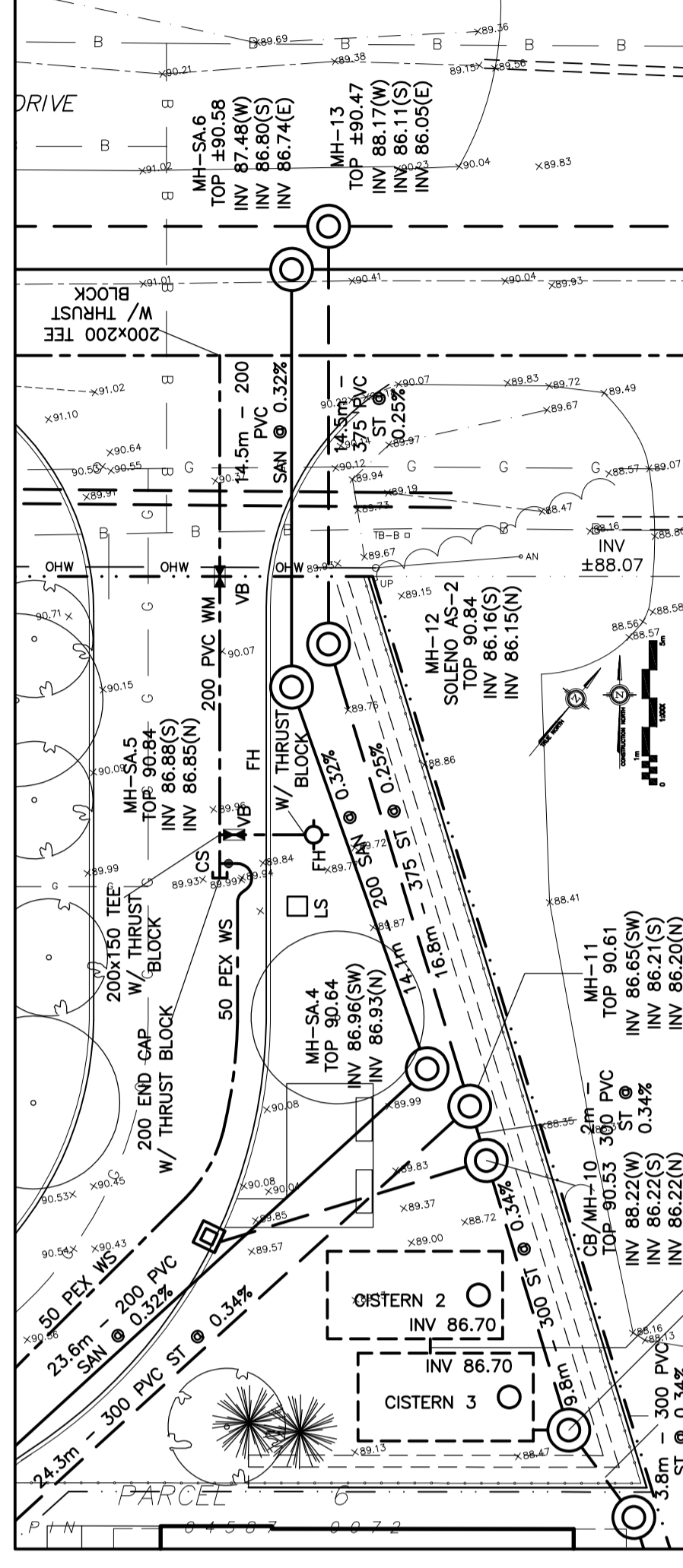
D. B. GRAY ENGINEERING INC.
 Sewerage Management - Grading & Drainage - Storm & Sanitary Sewers - Foundations
 700 Long Point Circle
 Ottawa, Ontario
 613-425-8044
 dgray@dbgrayengineering.com

Project
**PROPOSED
 RESIDENTIAL DEVELOPMENT
 1164-1166 HIGHCROFT DR.**
 MANOTICK, ONTARIO

Drawing Title
**PLAN & PROFILE
 PRIVATE ROAD**

Engineer's Seal

 Drawing No. **C-10**
 of **11**
 NOT VALID UNLESS
 SIGNED & DATED



| STATION FROM MH 13 | STATION TO MH 13 | INVERT | INVERT | TOP OF WM | C/L OF ROAD |
|--------------------|------------------|--------------|--------------|-----------|-------------|
| B+00.0 | B+00.5 | INV 86.17(M) | INV 86.11(S) | 88.31 | 90.76 |
| B+01.4 | B+01.6 | INV 86.16(S) | INV 86.89(N) | 88.31 | 90.72 |
| B+02.3 | B+03.0 | INV 86.22(N) | INV 86.93(N) | 88.31 | 90.67 |
| B+03.6 | B+04.0 | INV 86.22(S) | INV 86.93(N) | 88.22 | 90.62 |
| B+04.0 | B+04.4 | INV 86.93(N) | INV 86.93(N) | 88.26 | 90.62 |
| B+05.5 | B+06.0 | INV 86.93(N) | INV 86.93(N) | 88.36 | 90.76 |
| B+07.0 | B+07.5 | INV 87.04(N) | INV 86.73(S) | 88.36 | 90.76 |
| B+07.5 | B+08.0 | INV 87.04(N) | INV 86.73(S) | 88.36 | 90.76 |
| B+08.0 | B+08.5 | INV 86.73(S) | INV 86.73(S) | 88.36 | 90.76 |
| B+09.0 | B+09.5 | INV 86.73(S) | INV 86.73(S) | 88.36 | 90.76 |
| B+10.0 | B+10.5 | INV 86.73(S) | INV 86.73(S) | 88.36 | 90.76 |
| B+11.0 | B+11.5 | INV 86.73(S) | INV 86.73(S) | 88.36 | 90.76 |
| B+12.0 | B+12.5 | INV 86.73(S) | INV 86.73(S) | 88.36 | 90.76 |
| B+13.0 | B+13.5 | INV 86.73(S) | INV 86.73(S) | 88.36 | 90.76 |

| STATION FROM MH 13 | STATION TO MH 13 | INVERT | INVERT | TOP OF WM | C/L OF ROAD |
|--------------------|------------------|--------------|--------------|-----------|-------------|
| B+00.0 | B+00.5 | INV 86.17(M) | INV 86.11(S) | 88.31 | 90.76 |
| B+01.4 | B+01.6 | INV 86.16(S) | INV 86.89(N) | 88.31 | 90.72 |
| B+02.3 | B+03.0 | INV 86.22(N) | INV 86.93(N) | 88.31 | 90.67 |
| B+03.6 | B+04.0 | INV 86.22(S) | INV 86.93(N) | 88.22 | 90.62 |
| B+04.0 | B+04.4 | INV 86.93(N) | INV 86.93(N) | 88.26 | 90.62 |
| B+05.5 | B+06.0 | INV 86.93(N) | INV 86.93(N) | 88.36 | 90.76 |
| B+07.0 | B+07.5 | INV 87.04(N) | INV 86.73(S) | 88.36 | 90.76 |
| B+07.5 | B+08.0 | INV 87.04(N) | INV 86.73(S) | 88.36 | 90.76 |
| B+08.0 | B+08.5 | INV 86.73(S) | INV 86.73(S) | 88.36 | 90.76 |
| B+09.0 | B+09.5 | INV 86.73(S) | INV 86.73(S) | 88.36 | 90.76 |
| B+10.0 | B+10.5 | INV 86.73(S) | INV 86.73(S) | 88.36 | 90.76 |
| B+11.0 | B+11.5 | INV 86.73(S) | INV 86.73(S) | 88.36 | 90.76 |
| B+12.0 | B+12.5 | INV 86.73(S) | INV 86.73(S) | 88.36 | 90.76 |
| B+13.0 | B+13.5 | INV 86.73(S) | INV 86.73(S) | 88.36 | 90.76 |

| STATION FROM CB/MH 4 | STATION FROM CB/MH 13 | INVERT | INVERT | TOP OF WM | C/L OF ROAD |
|----------------------|-----------------------|--------------|--------------|-----------|-------------|
| B+073.9 | B+072.5 | INV 88.28(N) | INV 86.53(N) | 88.24 | 90.64 |
| B+070 | B+070 | INV 87.21 | INV 87.04(N) | 88.24 | 90.64 |
| B+060 | B+060 | INV 87.04(N) | INV 86.73(N) | 88.32 | 90.72 |
| B+051.5 | B+050 | INV 86.73(S) | INV 87.04(N) | 88.34 | 90.74 |
| B+050 | B+050 | INV 86.73(S) | INV 87.04(N) | 88.36 | 90.76 |
| B+040 | B+040 | INV 86.73(S) | INV 86.73(S) | 88.36 | 90.76 |
| B+030 | B+030 | INV 86.73(S) | INV 86.73(S) | 88.36 | 90.76 |
| B+020 | B+020 | INV 86.73(S) | INV 86.73(S) | 88.36 | 90.76 |
| B+010 | B+010 | INV 86.73(S) | INV 86.73(S) | 88.36 | 90.76 |
| B+00.5 | B+00.5 | INV 86.73(S) | INV 86.73(S) | 88.36 | 90.76 |
| B+00.0 | B+00.0 | INV 86.73(S) | INV 86.73(S) | 88.36 | 90.76 |