

ELEVATION NOTES

1. Elevations shown are geodetic and are referred to the CGVD28 geodetic datum.
2. It is the responsibility of the user of this information to verify that the job benchmark has not been altered or disturbed and that its relative elevation and description agrees with the information shown on this drawing.

UTILITY NOTES

1. This drawing cannot be accepted as acknowledging all of the utilities and it will be the responsibility of the user to contact the respective utility authorities for confirmation.
2. Only visible surface utilities were located.
3. A field location of underground plant by the pertinent utility authority is mandatory before any work involving breaking ground, probing, excavating etc.
4. Underground utility services are taken from City of Ottawa Engineering Drawings, Job. No. E-2209 and Dwg. No. R-558-15.

SURVEYOR'S REAL PROPERTY REPORT

PART 1 Plan of PART OF LOTS 48, 64 AND 65 REGISTERED PLAN NO. 49 CITY OF OTTAWA

Surveyed by Annis, O'Sullivan, Vollebek Ltd.

Scale 1 : 150



Metric DISTANCES SHOWN ON THIS PLAN ARE IN METRES AND CAN BE CONVERTED TO FEET BY DIVIDING BY 0.3048

Plan updated, May 11, 2017 - Buried utilities added

Surveyor's Certificate

- I CERTIFY THAT:
1. This survey and plan are correct and in accordance with the Surveys Act, the Surveyors Act and the Land Titles Act and the regulations made under them.
 2. The survey was completed on the 27th day of April, 2017.

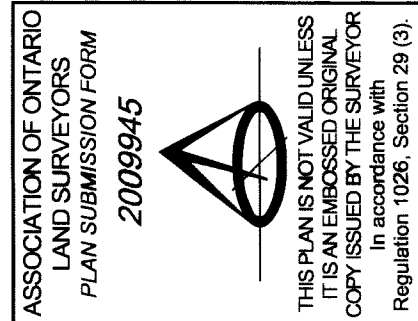
May 3rd, 2017 Date
Richard R. Gauthier
Ontario Land Surveyor

PART 2 THIS PLAN MUST BE READ IN CONJUNCTION WITH SURVEY REPORT DATED: May 3rd, 2017

ANNIS, O'SULLIVAN, VOLLEBEK LTD. grants to Longwood Building Corporation, ("The Client"), their solicitors, mortgagees, and other related parties, permission to use original, signed, sealed copies of the Surveyor's Real Property Report in transactions involving The Client.

Denotes

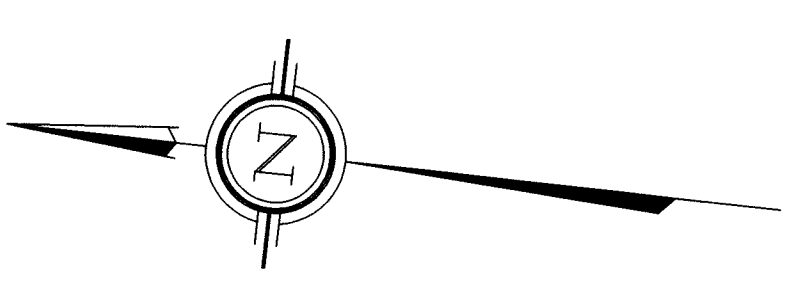
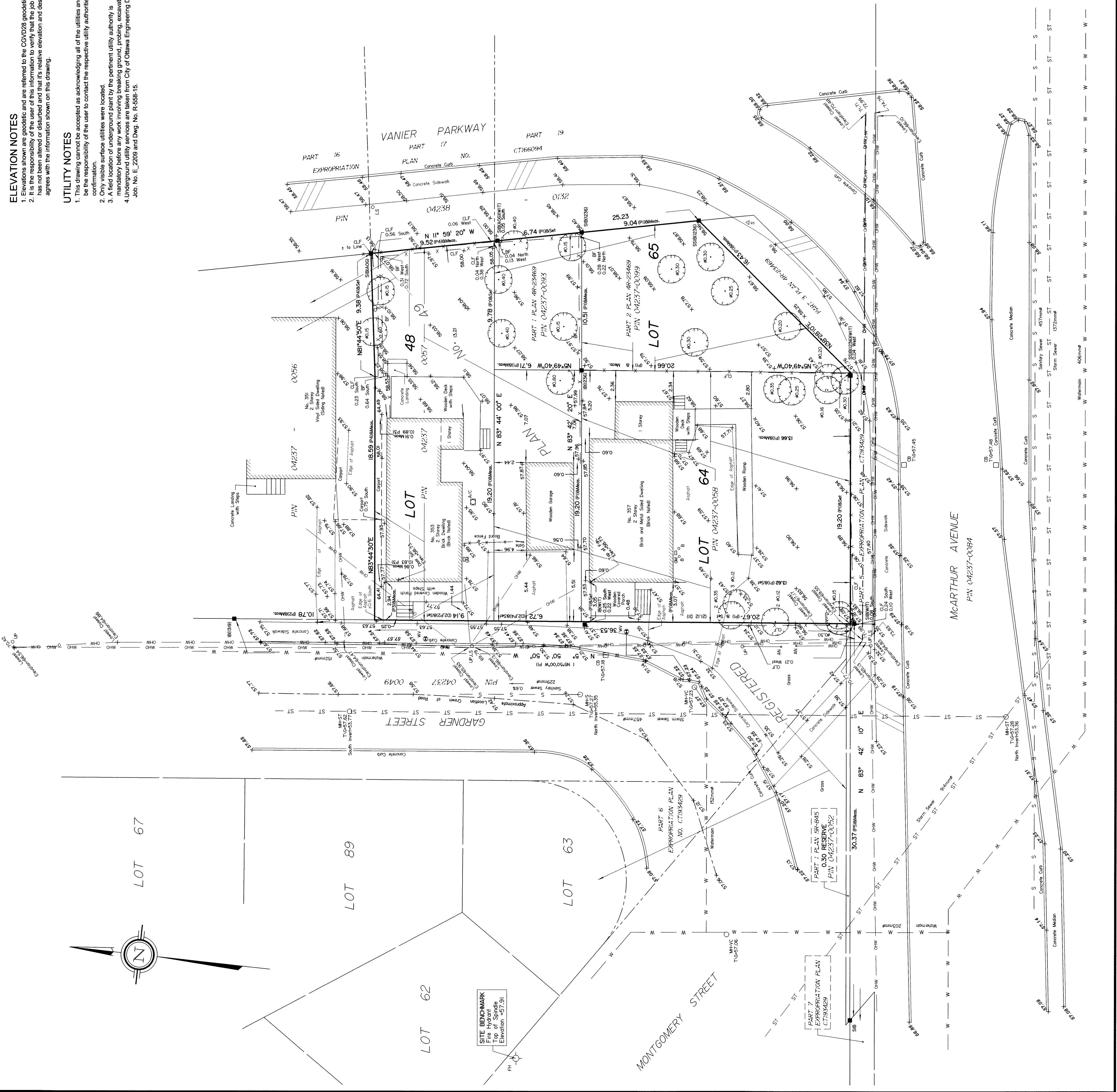
□	Survey Monument Planted
□	Survey Monument Found
□	Standard Iron Bar
□	Short Standard Iron Bar
□	Iron Bar
□	Witness
□	Witness
□	Measured
□	(AO9)
□	(P1)
□	(P2)
□	(P3)
□	(P4)
□	(P5)
□	(D1)
□	(D2)
□	Deciduous Tree
□	Fire Hydrant
□	Water Valve
□	Maintenance Hole (Sanitary)
□	Maintenance Hole (Valve Chamber)
□	Maintenance Hole (Unidentified)
□	Catch Basin
□	Gas Meter
□	Bollard
□	Sign
□	Top of Grate
□	Chain Link Fence
□	Board Fence
□	Utility Pole with Light Standard
□	Utility Pole
□	Anchor
□	Air Conditioner
□	Diameter
□	Location of Elevations
□	Top of Concrete Curb Elevation
□	Diameter
□	Centreline
□	Overhead Wires
□	Property Line
□	CHW



Distances shown on this plan are ground distances and can be converted to grid distances by multiplying by the combined scale factor of 0.999944.

Bearings are grid, derived from Can-Net 2016 Real Time Network GPS observations and are referenced to Specified Control Points 0191660105 and 019198434761, MTM Zone 9 (75°30' West Longitude) NAD-83 (original).

Coordinates are derived from Can-Net 2016 Real Time Network GPS observations referenced to Specified Control Points 01919860105 and 019198434761, MTM Zone 9 (75°30' West Longitude) NAD-83 (original).



SITE BENCHMARK
Fire Hydrant
Top of Shaft
Elevation: 57.191

© Annis, O'Sullivan, Vollebek Ltd. 2017. THIS PLAN IS PROTECTED BY COPYRIGHT.
ANNIS, O'SULLIVAN, VOLLEBEK LTD.
14 Concourse Gate, Suite 500
Nepean, Ont. K2E 7S6
Phone: (613) 277-8888 Fax: (613) 727-1079
Cell No. 955-977, License # P.L.S. 48, 64, 65, 67, 49, T.F. 1, A.M.
Land Surveyors