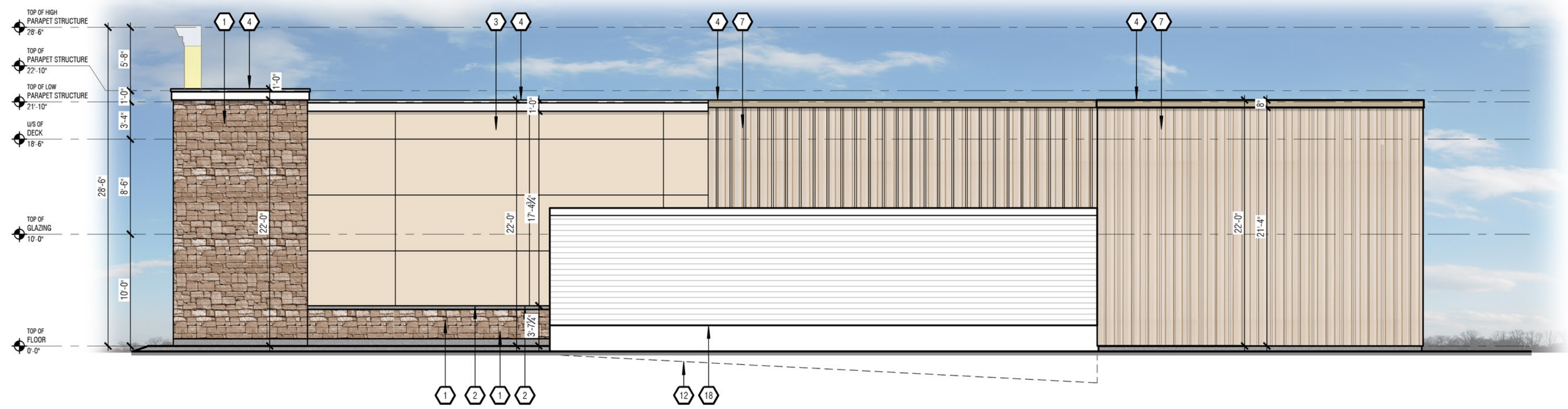
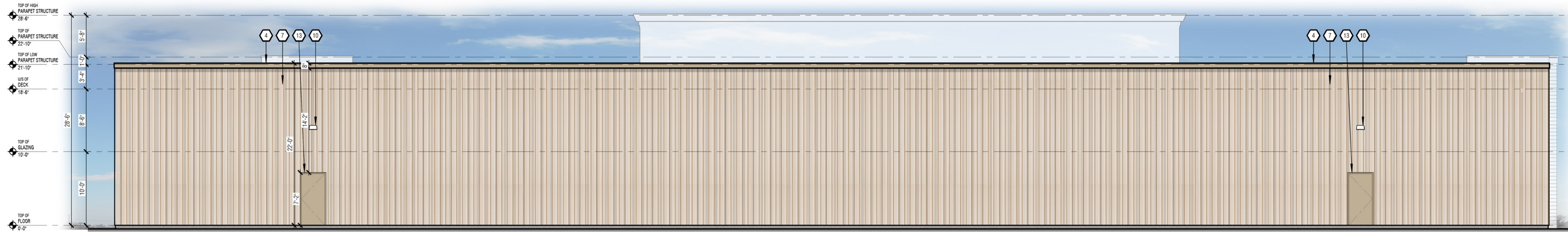


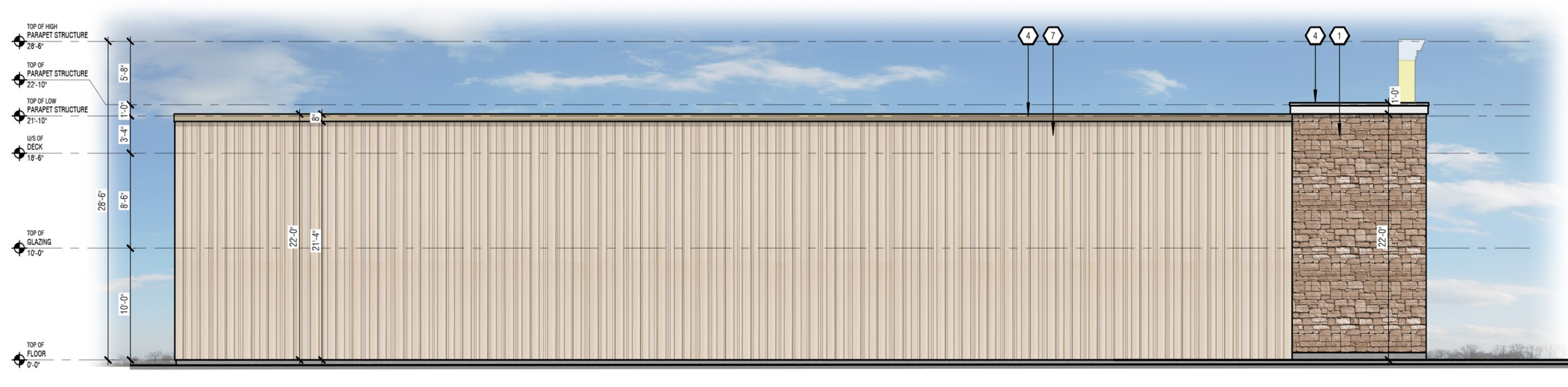
1 WEST ELEVATION
SK1
1/8" = 1'-0"



2 SOUTH ELEVATION
SK1
1/8" = 1'-0"



3 EAST ELEVATION
SK1
1/8" = 1'-0"



4 NORTH ELEVATION
SK1
1/8" = 1'-0"

- EXTERIOR ELEVATION KEYED NOTES**
- 1 ARCHITECTURAL BLOCK MASONRY VENEER.
 - 2 MASONRY SILL c/w DRIP EDGE
 - 3 EXTERIOR INSULATED FINISH SYSTEM (EFS)
 - 4 PRE-FINISHED METAL CAP FLASHING.
 - 5 ALUMINUM FRAMES c/w DOUBLE PANE CLEAR GLAZING.
 - 6 FOUNDATION WALL.
 - 7 VERTICAL PRE-FINISHED METAL SIDING
 - 8 SIGNAGE.
 - 9 STEEL BOLLARD c/w CONCRETE FILL. COLOUR: YELLOW
 - 10 EXTERIOR LIGHT FIXTURE
 - 11 STEEL STAIR, LANDING, AND RAIL c/w OPEN GRATE TREADS.
 - 12 LINE OF GRADE BEYOND.
 - 13 HOLLOW METAL DOOR c/w HOLLOW METAL FRAME.
 - 14 HARDERPLANK LAP SIDING
 - 15 DOCK LEVELLER.
 - 16 ALUMINUM DOOR c/w CLEAR GLAZING.
 - 17 EXTERIOR INSULATED FINISH SYSTEM (EFS) BAND.
 - 18 CONCRETE SCREEN WALL.
 - 19 PRE-FINISHED INSULATED OVERHEAD SECTIONAL DOOR, SEAL AND BUMPERS.

IT IS THE RESPONSIBILITY OF THE CONTRACTOR TO:
 - CHECK AND VERIFY ALL DIMENSIONS ON SITE.
 - REPORT ALL ERRORS AND/OR OMISSIONS TO GREYSTONE BEFORE CONTINUING WITH ANY WORK.
 THESE DRAWINGS MAY NOT BE USED FOR CONSTRUCTION UNLESS NOTED OTHERWISE.
 THESE DRAWINGS ARE NOT TO BE SCALED. ERRORS MADE BY PERSONS SCALING THESE DRAWINGS SHALL NOT BE THE RESPONSIBILITY OF GREYSTONE.
 THESE DRAWINGS ARE TO BE READ IN CONJUNCTION WITH ALL OTHER RELATED DOCUMENTS.
 ALL DESIGN DOCUMENTS ARE THE COPYRIGHT PROPERTY OF GREYSTONE. ANY REPRODUCTIONS OF THE DESIGN DOCUMENTS IN PART OR IN WHOLE IS FORBIDDEN WITHOUT WRITTEN APPROVAL BY GREYSTONE.

Greystone

Kitchener
 100 Conestoga College Blvd, Unit 1116
 Kitchener, Ontario N2P 2N6
 (519) 896-1010 ext.100
 info@greystoneinc.ca
 www.greystoneinc.ca

Toronto
 2999 Lakeshore Blvd. West
 Toronto, Ontario M8V 1J8
 (416) 901-6446

3	ISSUED FOR SPA	2020.06.25
2	ISSUED FOR REVIEW	2020.03.20
1	ISSUED FOR REVIEW	2020.02.14
REV.	DESCRIPTION	DATE
△	REVISION	
□	ISSUED	
○	APPROVAL	

PROJECT FOR:
WEXFORD
 COMMERCIAL DEVELOPMENTS LTD.

PROJECT:
 NEW BUILD
 CREEKSIDE LANDING
 MARCH ROAD
 KANATA, ONTARIO

DRAWING:
EXTERIOR ELEVATIONS

DRAWN: M.M.W.	CHECKED: J.J.	JOB NUMBER: 17300
DATE (YYYY/MM/DD): 2020.06.25	SCALE: 1/8" = 1'-0"	
DRAWING NUMBER: A3.0	REVISION NUMBER: R2	