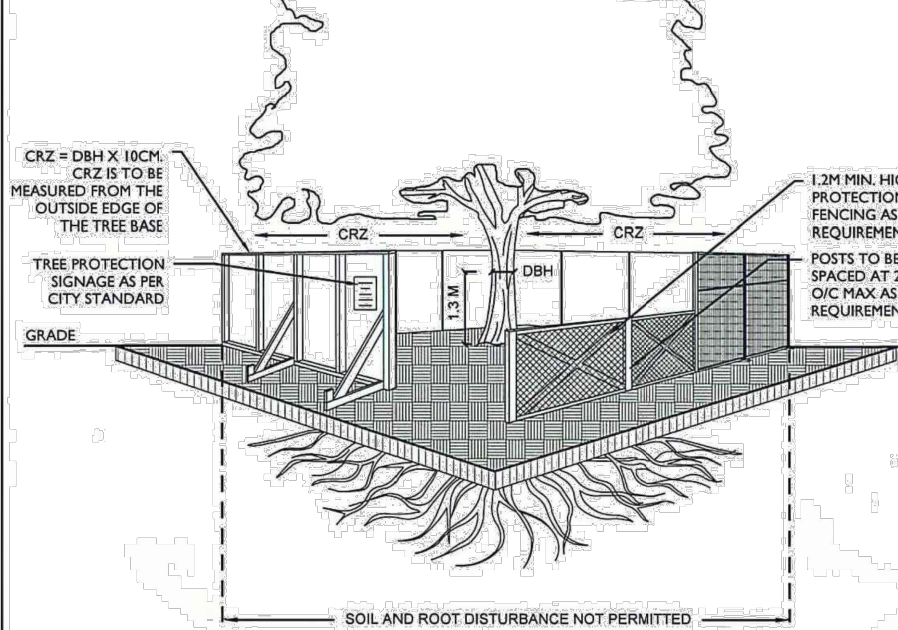


PLAN VIEW



CROSS SECTION

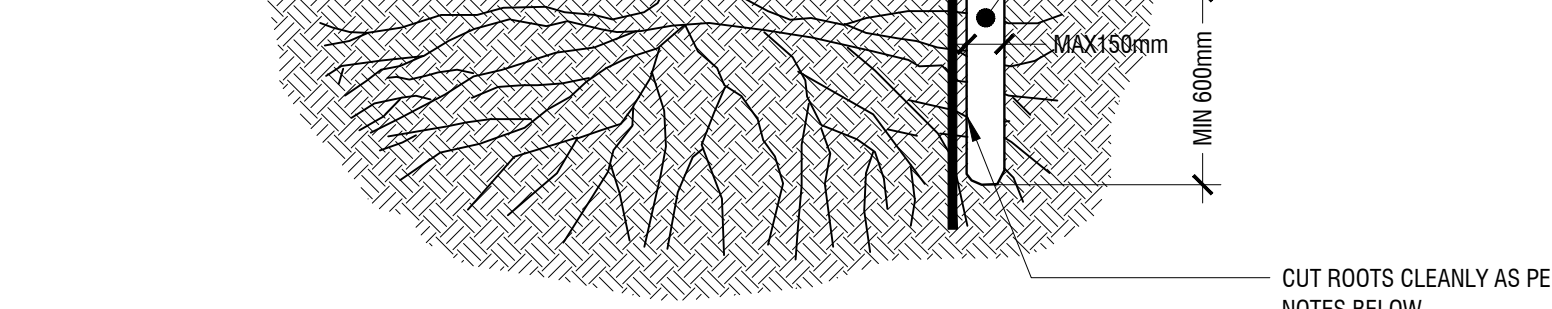
ACCESSIBLE FORMATS AND COMMUNICATION
SUPPORTS ARE AVAILABLE, UPON REQUEST

TREE PROTECTION REQUIREMENTS:

- PRIOR TO ANY WORK ACTIVITY WITHIN THE CRITICAL ROOT ZONE (CRZ) OF 10 X DIAMETER OF A TREE, TREE PROTECTION FENCING MUST BE INSTALLED SURROUNDING THE CRITICAL ROOT ZONE, AND REMAIN IN PLACE UNTIL THE WORK IS COMPLETE.
- UNLESS PLANS ARE APPROVED BY CITY FORESTRY STAFF, FOR WORK WITHIN THE CRZ:
 - DO NOT PLACE ANY MATERIAL OR EQUIPMENT - INCLUDING OUTRIGS.
 - DO NOT ATTACH ANY SIGNS, NOTICES OR POSTERS TO ANY TREE.
 - DO NOT RAISE OR LOWER THE EXISTING GRADE.
 - TUNNEL OR BORE WHEN DIGGING.
 - DO NOT DAMAGE THE ROOT SYSTEM, TRUNK, OR BRANCHES OF ANY TREE.
 - ENSURE THAT EXHAUST FUMES FROM ALL EQUIPMENT ARE NOT DIRECTED TOWARD ANY TREE CANOPY.
 - DO NOT EXTEND HAND SURFACE OR SIGNIFICANTLY CHANGE LANDSCAPING.
- TREE PROTECTION FENCING MUST BE AT LEAST 1.2M IN HEIGHT, AND CONSTRUCTED OF RIGID OR FRAMED MATERIALS (E.G. MODULOC - STEEL, PLYWOOD HOARDING, OR SNOW FENCE ON A 2"x4" WOOD FRAME) WITH POSTS 2.4M APART, SUCH THAT THE FENCE LOCATION CANNOT BE ALTERED. ALL SUPPORTS AND BRACING MUST BE PLACED OUTSIDE OF THE CRZ, AND INSTALLATION MUST MINIMIZE DAMAGE TO EXISTING ROOTS. (SEE DETAIL).
- THE LOCATION OF THE TREE PROTECTION FENCING MUST BE DETERMINED BY AN ARBORIST AND DETAILED ON ANY ASSOCIATED PLANS FOR THE SITE (E.G. TREE CONSERVATION REPORT, TREE DISCLOSURE REPORT, ETC.). THE PLAN AND CONSTRUCTED FENCING MUST BE APPROVED BY CITY FORESTRY STAFF PRIOR TO THE COMMENCEMENT OF WORK.
- IF THE FENCED TREE PROTECTION AREA MUST BE REDUCED TO FACILITATE CONSTRUCTION, MITIGATION MEASURES MUST BE PRESCRIBED BY AN ARBORIST AND APPROVED BY CITY FORESTRY STAFF. THESE MAY INCLUDE THE PLACEMENT OF PLYWOOD, WOOD CHIPS, OR STEEL PLATING OVER THE ROOTS FOR PROTECTION ON THE PROPER PRUNING AND CARE OF ROOTS WHERE ENCOUNTERED.

BY-LAWS:
ALL CITY-OWNED TREES ARE PROTECTED UNDER THE MUNICIPAL TREES AND NATURAL AREAS PROTECTION BY-LAW (2006-279). WITHIN THE URBAN AREA, PRIVATELY-OWNED TREES GREATER THAN 10CM DIAMETER ON LOTS >1HA IN SIZE OR LESS, AND TREES GREATER THAN 10CM DIAMETER ON LOTS >1HA, ARE PROTECTED UNDER THE URBAN TREE CONSERVATION BY-LAW (2009-200).

EXISTING GRADE

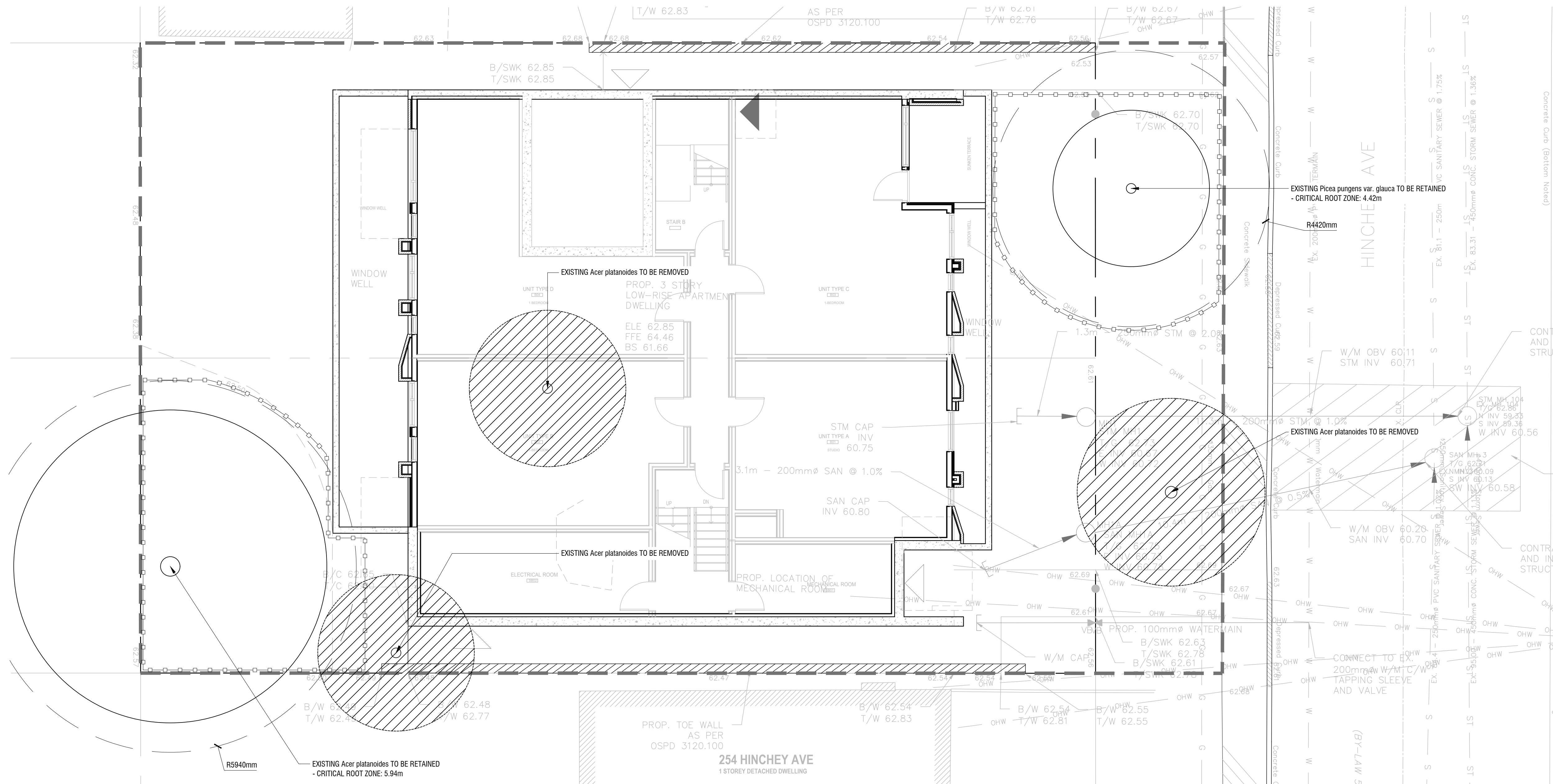


NOTES:

- PROPER ROOT PRUNING TECHNIQUE REQUIRED WHEN TREE ROOTS ENCOUNTERED DURING EXCAVATION.
- EXCAVATIONS WITHIN DRIPLINE SHOULD BE BY DIRECTIONAL MICRO-TUNNELLING AND BORING. OUTSIDE THE DRIPLINE, ROOTS SHOULD BE CUT CLEANLY (AS PER ABOVE DRAWING) WITH PRUNING SHEARS OR A SAW WIPE WITH ALCOHOL BEFORE EACH CUT.
- AFTER ROOTS ARE CLEANLY CUT, THE AREA SHOULD BE BACKFILLED WITH SUITABLE MATERIAL (TO BE APPROVED BY LANDSCAPE ARCHITECT) TO PREVENT DESSICATION.
- WHERE APPROPRIATE, THE TREES SHALL UNDERGO AN OVERALL PRUNING TO RESTORE TREE APPEARANCE AND / OR RESTORE THE BALANCE BETWEEN TOP GROWTH AND ROOTS. DO NOT PRUNE LEADERS.

2 ROOT PRUNING TECHNIQUE

L1 1:30



3 TREE REMOVALS & PROTECTION PLAN

L1 1:75

NOTES:

DO NOT SCALE DRAWINGS.

NOTES ARE APPLICABLE TO ALL DRAWINGS IN THE SET;

Fotenn Consultants Inc. IS NOT RESPONSIBLE FOR ACCURACY OF BASE INFORMATION;

REFER TO CIVIL ENGINEERING DRAWINGS FOR GRADING & SITE SERVICING INFORMATION;

THE CONTRACTOR IS RESPONSIBLE FOR CONFIRMING SITE CONDITIONS AND REPORTING ANY DISCREPANCIES TO THE LANDSCAPE ARCHITECT;

THE CONTRACTOR IS RESPONSIBLE FOR CONFIRMING EXACT LOCATIONS OF ALL UNDERGROUND SERVICES AND OBTAINING CLEARANCE FROM ALL APPLICABLE UTILITIES. PROPOSED WORKS FOUND TO BE IN CONFLICT WITH UNDERGROUND SERVICES MAY BE ADJUSTED AT THE DIRECTION OF THE LANDSCAPE ARCHITECT;

LANDSCAPE ELEMENTS SHOWN ARE SUBJECT TO THE FINAL LOCATION OF UNDERGROUND SERVICES AND UTILITIES;

DO NOT INSTALL TREES ON PROPERTY / LOT LINES OR WITHIN DRAINAGE EASEMENTS;

PERFORM WORK IN ACCORDANCE WITH DETAILS AND SPECIFICATIONS;

ALL PLANT MATERIAL SHALL BE No. 1 NURSERY STOCK AND SHALL MEET OR EXCEED THE SPECIFICATION OF THE Canadian Standards for Nursery Stock, AS PUBLISHED BY THE Canadian Nursery Landscape Association;

SPECIES SUBSTITUTIONS ARE NOT PERMITTED WITHOUT PRIOR WRITTEN APPROVAL OF THE LANDSCAPE ARCHITECT;

ALL UN-PAVED SURFACES TO RECEIVE 150mm DEPTH TOPSOIL & SOD.

IMPORTANT NOTICE FOR CONTRACTOR:

THE CITY OF OTTAWA REQUIRES A Certificate of Completion (F1) Landscape Works TO BE SUBMITTED AND SEALED BY THE LANDSCAPE ARCHITECT. CONTRACTORS ARE RESPONSIBLE FOR FAMILIARIZING THEMSELVES WITH THE REQUIREMENTS OF THIS PROCESS AND PROVIDING SUFFICIENT NOTICE TO THE LANDSCAPE ARCHITECT TO CONDUCT SITE REVIEWS **DURING INSTALLATION** OF TREES. THE 1 YEAR WARRANTY PERIOD SHALL NOT COMMENCE UNTIL THE LANDSCAPE ARCHITECT HAS SUBMITTED THE F1 Certificate.

PRIOR TO INSTALLATION OF TREES, THE DEVELOPER WILL CONTACT THE PLANNING AND GROWTH MANAGEMENT AND FORESTRY SERVICES TO REVIEW THE SPECIES AND LOCATION OF TREES.

Client / Client

ALEXANDRE AUBREY

key plan / plan repère

legend / légende

- LIMIT OF WORK
- EXISTING TREES TO REMAIN
- CRITICAL ROOT ZONE
- EXISTING TREES TO BE REMOVED
- TREE PROTECTION FENCING

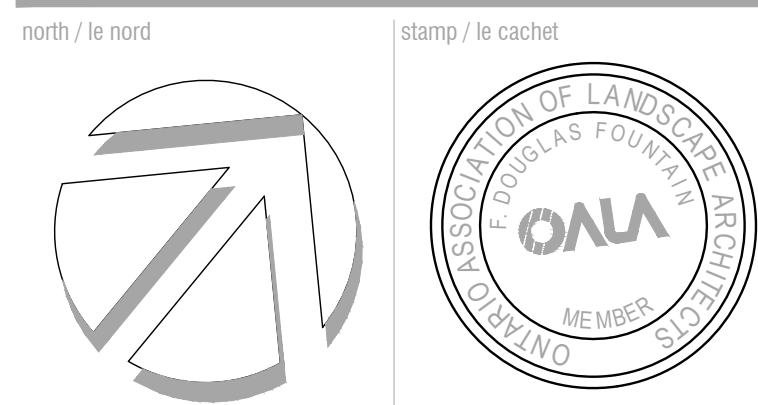
NOTE: REFER TO TCR AS PREPARED BY IFS ASSOCIATES FOR EXISTING TREE SPECIES, CONDITION, DBH, AND REMOVAL STATUS

PRELIMINARY
NOT FOR CONSTRUCTION

01	issue for SPA	2020/03/04
00	issue for client review	2020/02/27

rev'n description / la description yyyy/mm/dd

FOTENN Planning + Design
396 Cooper Street, Suite 300
Ottawa, ON, CANADA K2P 2H7
613.730.5709
fotenn.com



project / projet

250 - 252 HINCHEY AVE.

drawing / dessin

TREE REMOVALS & PROTECTION PLAN

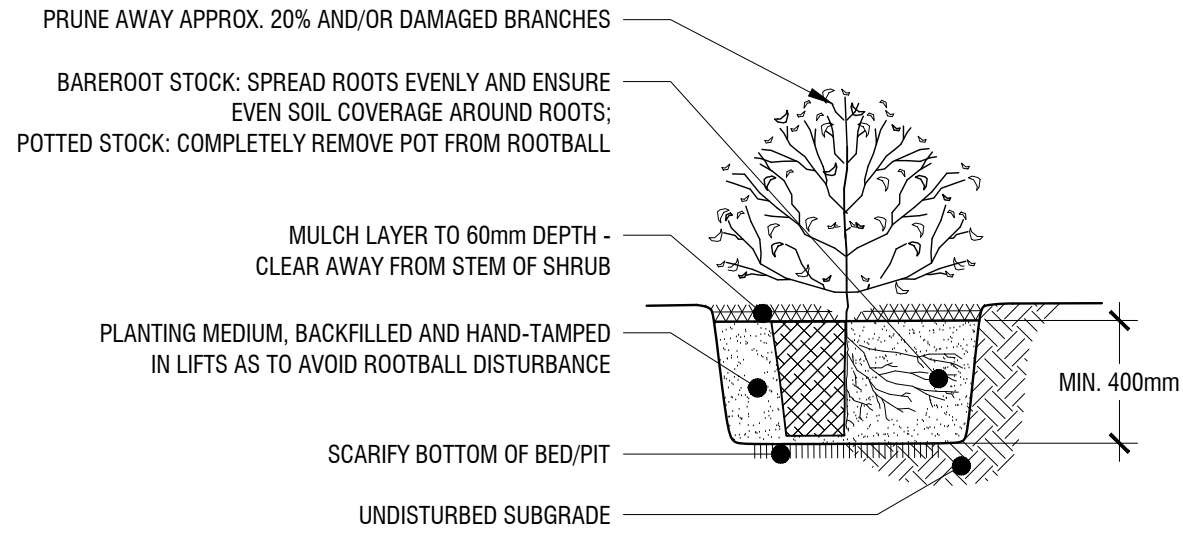
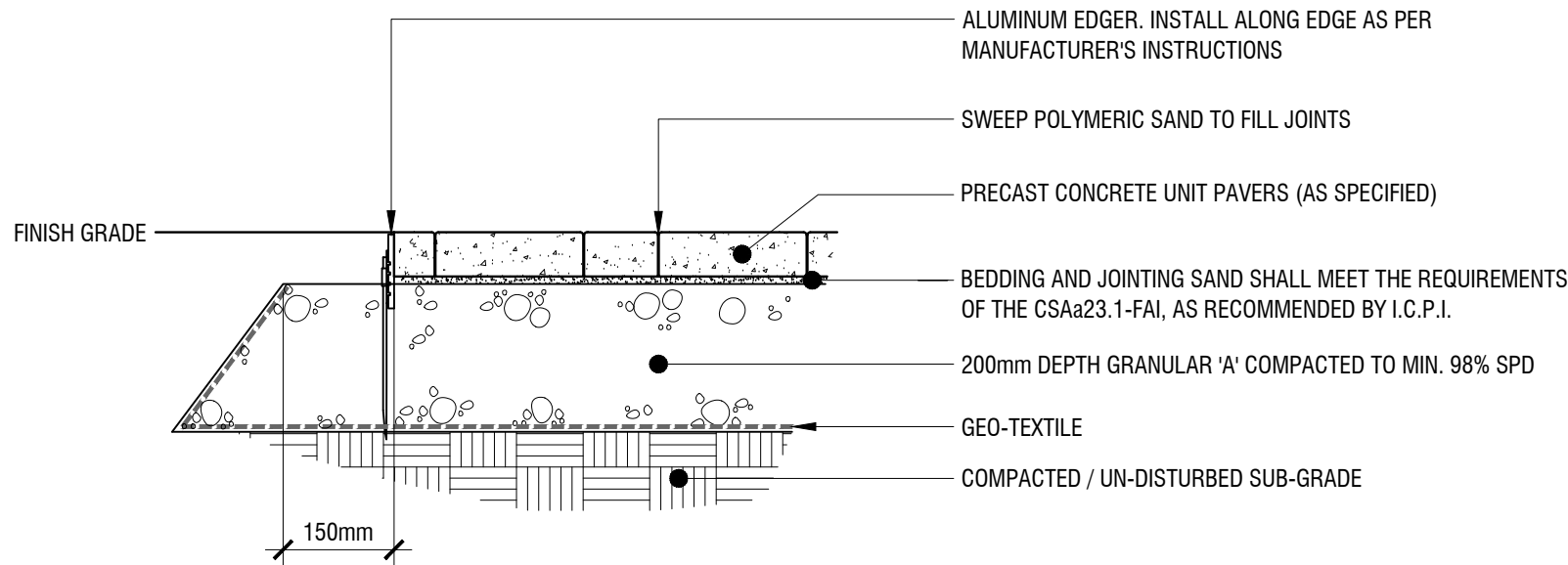
designed / conçu	drawn / dessiné	reviewed / examiné
OM	OM	SP/DF

date project number / No. du projet

JANUARY 2020

drawing number / No. du dessin

L1 of 2



PLANTING SCHEDULE				
KEY	QTY.	BOTANICAL NAME	COMMON NAME	SIZE / CONDITION / SPACING
ca	22	Calamagrostis acutiflora 'Karl Foerster'	Feather Reed Grass	#2 Pot / 50cm o.c.
Cs	21	Cornus sericea 'Farrow'	Arctic Fire Dogwood	#3 Pot / 90cm o.c.
dc	28	Deschampsia cespitosa 'Goldtau'	Golden Dew Tufted Hair Grass	#2 Pot / 50cm o.c.
fg	36	Festuca glauca 'Elijah Blue'	Elijah Blue Fescue	#1 Pot / 40cm o.c.
GB	1	Ginkgo biloba 'Princeton Sentry®'	Princeton Sentry® Maidenhair Tree	60mm cal. / W.B.
ho	9	Hosta 'Hadspen Blue'	Plantain Lily	#2 Pot / 100cm o.c.
pa	22	Pennisetum alopecuroides 'Hameln'	Dwarf Fountain Grass	#2 Pot / 90cm o.c.
sn	24	Salvia nemorosa 'May Night' (Mainacht)	May Night Meadow Sage	#1 Pot / 50cm o.c.
ss	27	Salvia nemorosa 'Snow Hill' (Schneehugel)	Snow Hill Sage	#1 Pot / 50cm o.c.
Tc	5	Taxus cuspidata 'Nana'	Dwarf Japanese Yew	#3 Pot / 1.75m o.c

1 PRE-CAST UNIT PAVERS

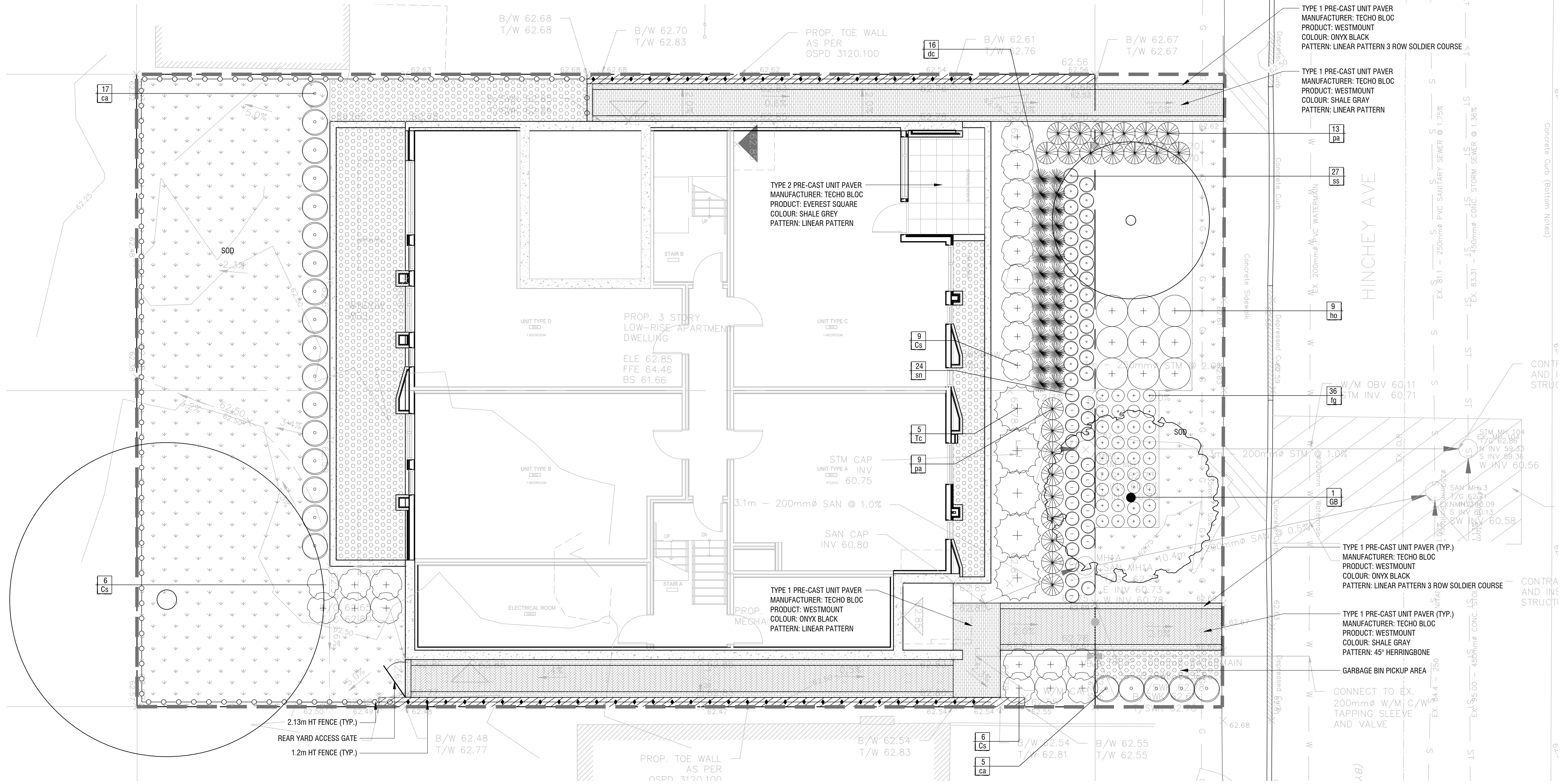
L2 1:10

2 SHRUB PLANTING

L2 1:25

3 PERENNIAL / ORNAMENTAL GRASS PLANTING

L2 1:25



4 LANDSCAPE PLAN

L2 1:75

Copyright Reserved
The Copyrights to all designs and drawings are the property of Fotenn Consultants Inc. Unauthorized reproduction or use is forbidden. DO NOT SCALE DRAWING

Copyright réservés
Les droits d'auteur à tous les modèles et dessins sont la propriété de Fotenn Consultants Inc. Reproduction ou utilisation non autorisée est interdite. NE PAS L'ÉCHELLE DE DESSIN

Client / Client

ALEXANDRE AUBREY

key plan / plan repère

PRELIMINARY
NOT FOR CONSTRUCTION

legend / légende

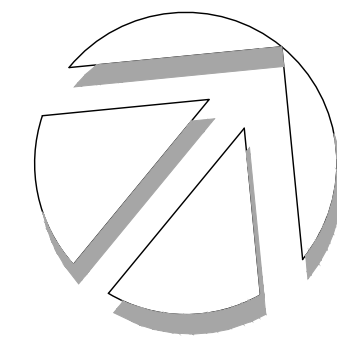
- LIMIT OF WORK
- EXISTING TREES TO REMAIN
- PROPOSED DECIDUOUS TREE
- 2.13m HIGH WOOD PRIVACY FENCE
- 1.2m HIGH WOOD PRIVACY FENCE
- PROPOSED SHRUB / PERENNIAL PLANTING
- SOD
- RIVER ROCK

01	issue for SPA	2020/03/04
00	issue for client review	2020/02/27
rev'n	description / la description	yyyy/mm/dd

FOTENN Planning + Design
396 Cooper Street, Suite 300
Ottawa, ON, CANADA K2P 2H7
613.730.5709
fotenn.com

north / le nord

stamp / le cachet



project / projet

250 - 252 HINCHEY AVE.

drawing / dessin

LANDSCAPE PLAN

designed / conçu OM	drawn / dessiné OM	reviewed / examiné SP/DF
date JANUARY 2020	project number / No. du projet	
drawing number / No. du dessin		

L2 of 2