

I REQUIRE THIS PLAN TO BE
DEPOSITED UNDER THE
LAND TITLES ACT.
DATE: Mar 22 / 2019

PLAN 4R- 31849
RECEIVED AND DEPOSITED
DATE: March 22, 2019

Andre Roy
ANDRE ROY
ONTARIO LAND SURVEYOR

L. ASENEAU
REPRESENTATIVE FOR
LAND REGISTRAR FOR THE
LAND TITLES DIVISION OF
OTTAWA-CARLETON NO. 4.

SCHEDULE

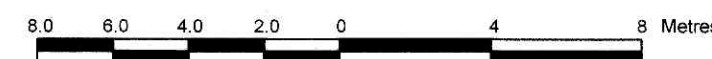
PART	LOT	PLAN	PIN
1	PART OF 48 (North Nepean Street)		
2	ALL OF 47 & 48 (South Gloucester Street)	2996	ALL OF 04115-0153
3			

Parts 1, 2 and 3: Subject to easement as in Inst. OC1993436.
Part 2: Subject to easement right-of-way Inst. N376862.

PLAN OF SURVEY OF LOTS 47 AND 48 (South Gloucester Street) AND PART OF LOT 48 (North Nepean Street) REGISTERED PLAN 2996 CITY OF OTTAWA

Surveyed by Annis, O'Sullivan, Vollebakk Ltd.

Scale 1 : 200



Metric

DISTANCES AND COORDINATES SHOWN ON THIS PLAN
ARE IN METRES AND CAN BE CONVERTED TO FEET BY
DIVIDING BY 0.3048.

Surveyor's Certificate

I CERTIFY THAT:

- This survey and plan are correct and in accordance with the Surveys Act, the Surveyors Act and the Land Titles Act and the regulations made under them.
- The survey was completed on the 25th day of February, 2019.

Mar 22 / 2019
Date

Andre Roy
Andre Roy
Ontario Land Surveyor

Notes & Legend

□	Denotes	Survey Monument Planted
■	"	Survey Monument Found
SIB	"	Standard Iron Bar
SSIB	"	Short Standard Iron Bar
IB	"	Iron Bar
CP	"	Concrete Pin
*	"	Survey Monument 0.3 metres Long
(WIT)	"	Witness
(AOG)	"	Annis, O'Sullivan, Vollebakk Ltd.
Meas.	"	Measured
Prop.	"	Proportion
(P)	"	Registered Plan 2996
(P1)	"	(AOG) Plan January 31, 2011
(P2)	"	(857) Plan October 5, 1997
(D1)	"	Inst. N414183

Distances shown on this plan are ground distances and can be converted to grid distances by multiplying by the combined scale factor of 0.999943.

Bearings are grid, derived from the southerly limit of Gloucester Street, shown as having a bearing of N 59°09'00" E on plan 4R-1229 and are reference to MTM Zone 9 (76°30' West Longitude) NAD-83 (original).

Coordinates are derived from Can-Net 2016 Real Time Network GPS observations referenced to Specified Control Points 01919680005 and 01919680105, MTM Zone 9 (76°30' West Longitude) NAD-83 (original).

Bearings referenced to (P1) have been rotated clockwise by 0°02'00".

Coordinate values are to urban accuracy in accordance with O. Reg. 216/10.

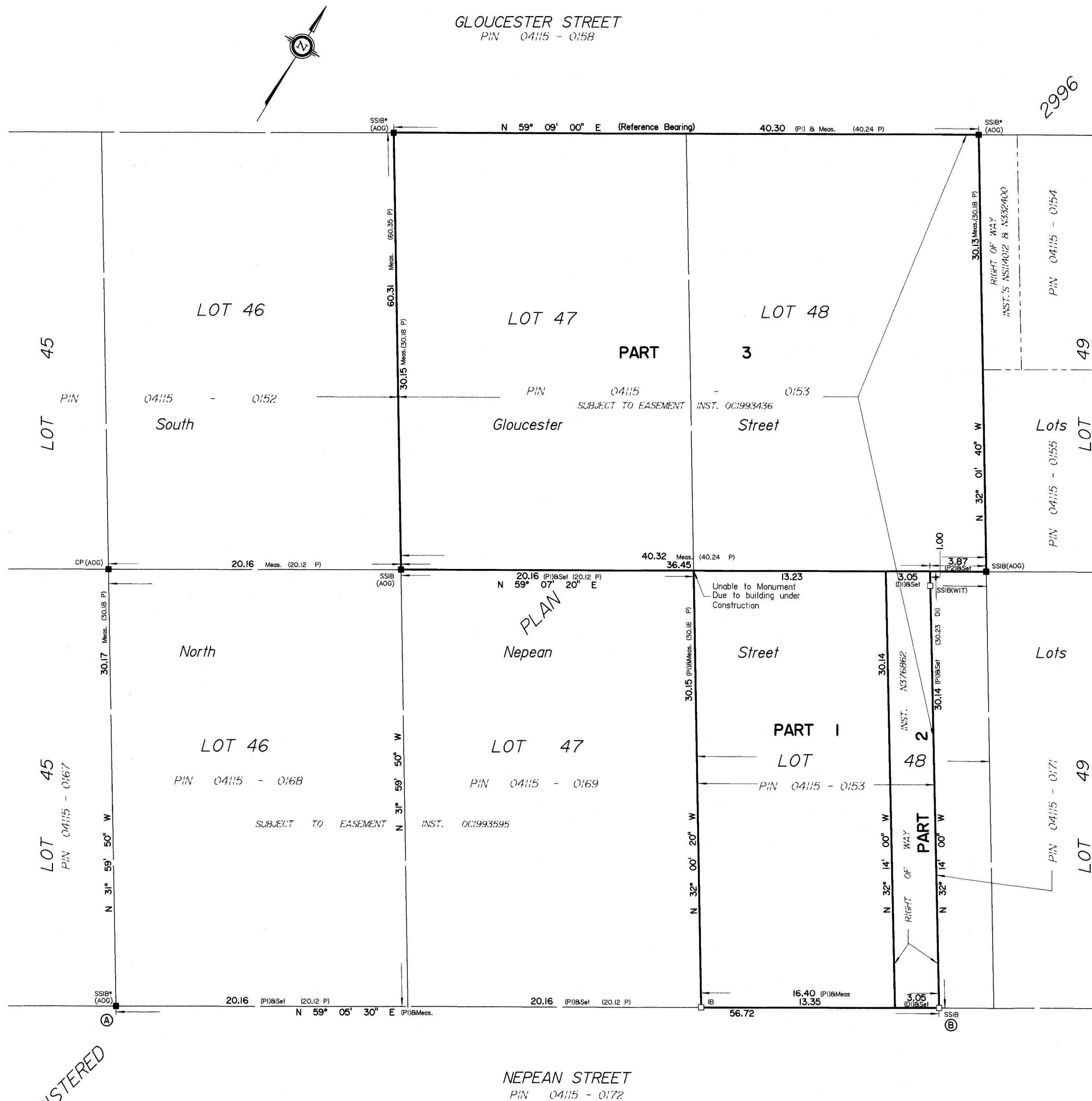
. 01919680005	North	5027191.26	Easting	361496.76
. 01919680105	North	5024915.16	Easting	373971.65
. Point A	North	5031280.36	Easting	367794.88
. Point B	North	5031309.49	Easting	367843.54

Caution: Coordinates cannot, in themselves, be used to re-establish corners or boundaries shown on this plan.



ANNIS, O'SULLIVAN, VOLLEBEKK LTD.
14 Concourse Gate, Suite 500
Nepean, Ont. K2E 7S6
Phone: (613) 727-0850 / Fax: (613) 727-1079
Email: Nepean@aovltd.com

Job No. 17560-19 Clonidine Lts 46 To 48 PL 2996 R F



REGISTERED