

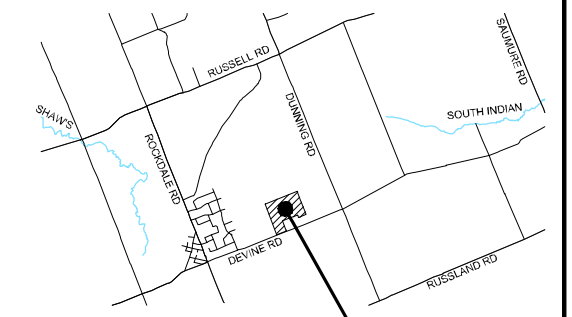
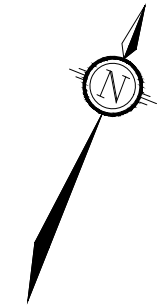
LEGEND

- Subject Lands to be rezoned from RU to RU[xx]
- Development Envelope

EXISTING RURAL

LOT 647 ± 24

LOT 25



KEY PLAN
N.T.S.

SITE

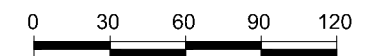
ZONING SKETCH

2289 DEVINE ROAD

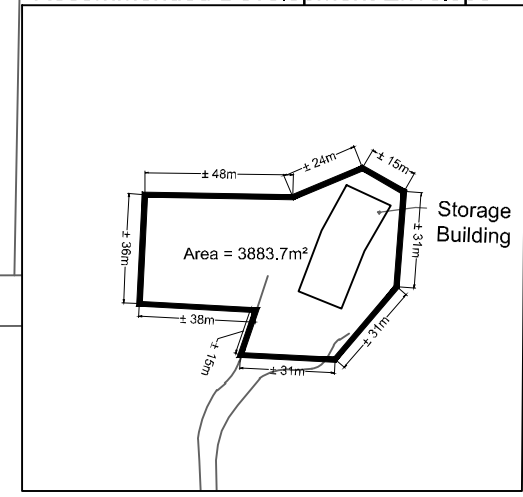
PART LOT 25, CON 5
TOWNSHIP OF CUMBERLAND
NOW CITY OF OTTAWA

LUC SEGUIN
2289 DEVINE ROAD
VARS, ONT

1:3000



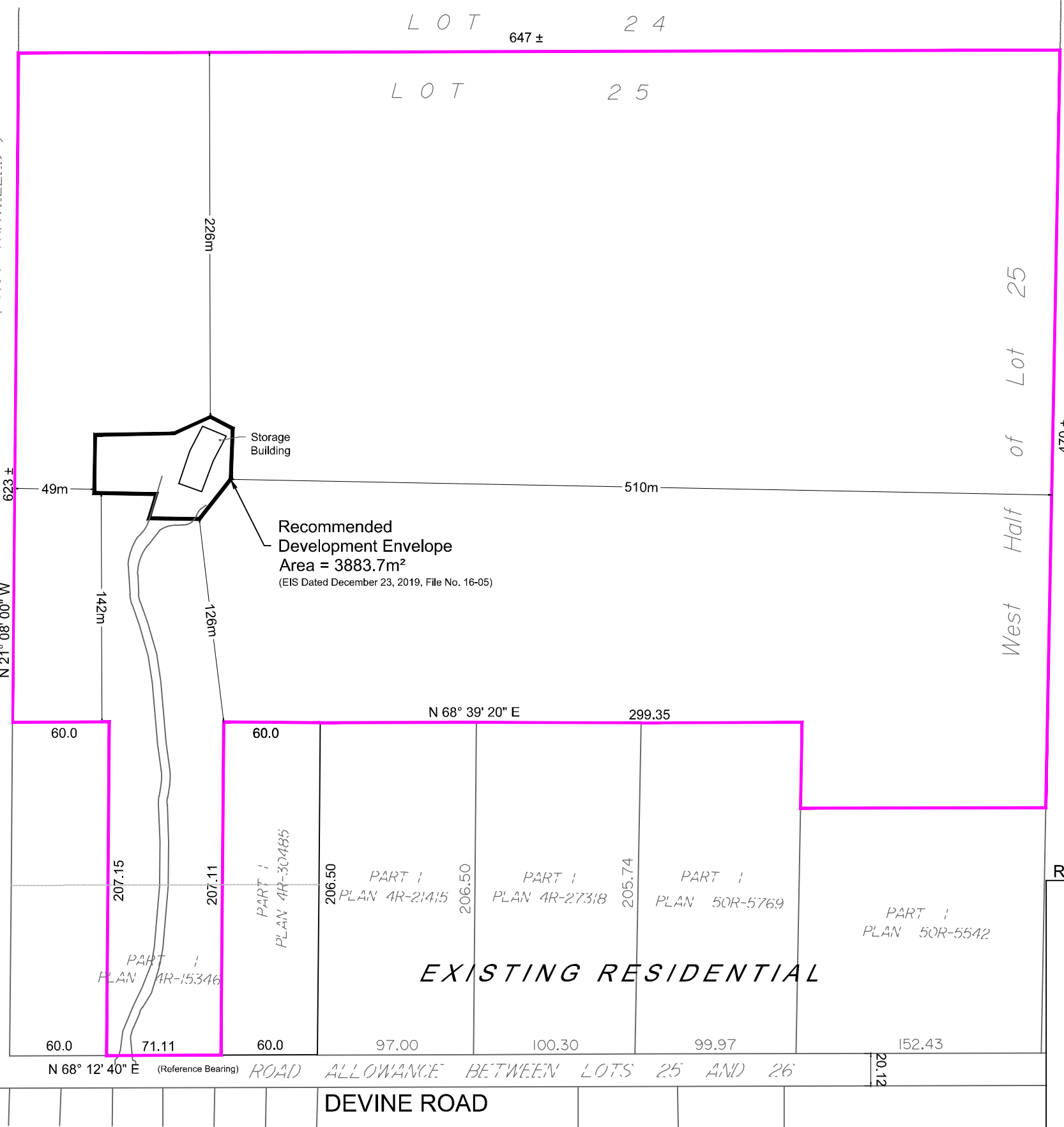
Recommended Development Envelope



ENLARGEMENT

EXISTING RURAL

ROAD ALLOWANCE BETWEEN CONCESSION 5 AND 6 - (NOT TRAVELLED)



EXISTING RESIDENTIAL

DEVINE ROAD

NOTE:
THIS PLAN HAS BEEN COMPILED USING LEGAL INFORMATION OBTAINED FROM ANNIS, O'SULLIVAN, VOLLEBEKK, ONTARIO LAND SURVEYORS; DATED JUNE 14, 2010; JOB No. E-4583-10, AND JULY 21, 2015; JOB No. E-7072-15

I.	ISSUED FOR ZONING APPLICATION	MAR 06/20	JJ
No.	REVISION	DATE	BY

NOVATECH
Engineers, Planners & Landscape Architects
Suite 200, 240 Michael Cowpland Drive
Ottawa, Ontario, Canada K2M 1P6
Telephone: (613) 254-9643
Facsimile: (613) 254-5867
Website: www.novatech-eng.com

ISSUED	MARCH, 2020
PROJECT No.	116038
DRAWING No.	116038-ZBA

M:\2016\116038\CAD\Planning\Figures\116038-ZBA.dwg, 2019-ZBA, Mar 06, 2020 - 12:40pm, wslloss