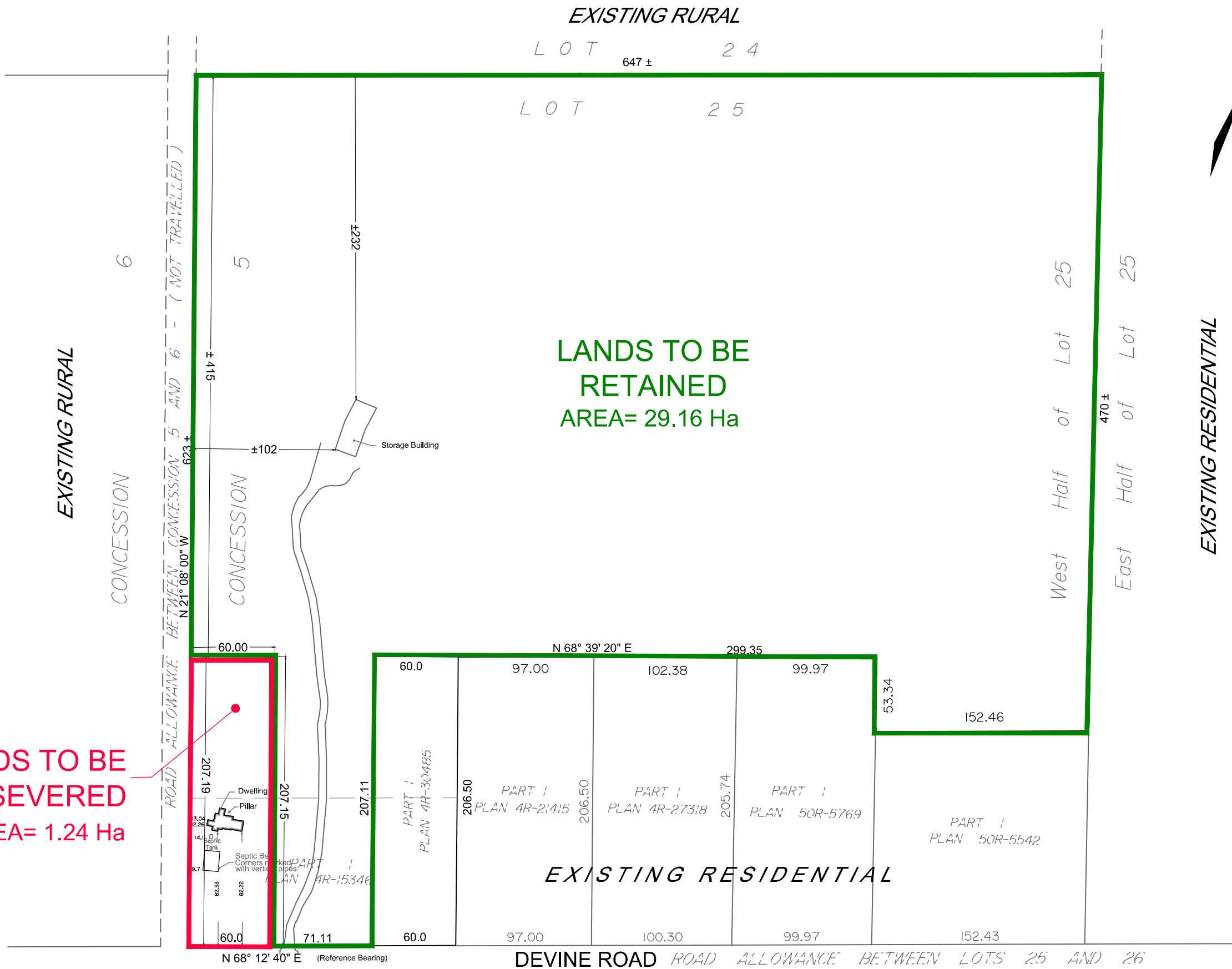
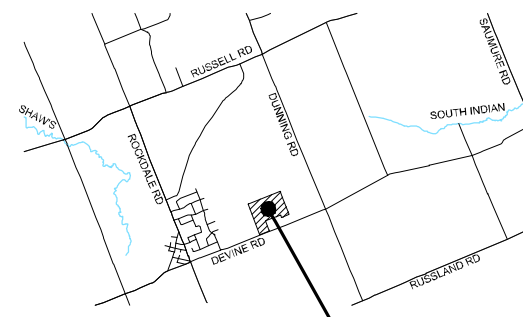


M:\2016\116038\CAD\Planning\Figures\116038-2019-SEV.dwg, 2019-SEV1, Oct 23, 2019 - 3:03pm, wslboss



LANDS TO BE SEVERED
AREA= 1.24 Ha

LANDS TO BE RETAINED
AREA= 29.16 Ha



KEY PLAN
N.T.S.

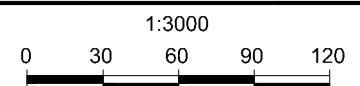
SITE

SEVERANCE APPLICATION #1

2289 DEVINE ROAD

PART LOT 25, CON 5
TOWNSHIP OF CUMBERLAND
NOW CITY OF OTTAWA

LUC SEGUIN
2289 DEVINE ROAD
VARS, ONT



No.	REVISION	DATE	BY
1.	ISSUED FOR SEVERANCE APPLICATION	OCT 15/19	JJ

NOVATECH
Engineers, Planners & Landscape Architects
Suite 200, 240 Michael Cowpland Drive
Ottawa, Ontario, Canada K2M 1P6
Telephone: (613) 254-9643
Facsimile: (613) 254-5857
Website: www.novatech-eng.com

ISSUED	OCTOBER, 2019
PROJECT No.	116038
DRAWING No.	116038-SEV

NOTE:
THIS PLAN HAS BEEN COMPILED USING LEGAL INFORMATION OBTAINED FROM ANNIS, O'SULLIVAN, VOLLEBEKK, ONTARIO LAND SURVEYORS;
DATED JUNE 14, 2010; JOB No. E-4583-10, AND JULY 21, 2015; JOB No. E-7072-15

EXISTING RESIDENTIAL