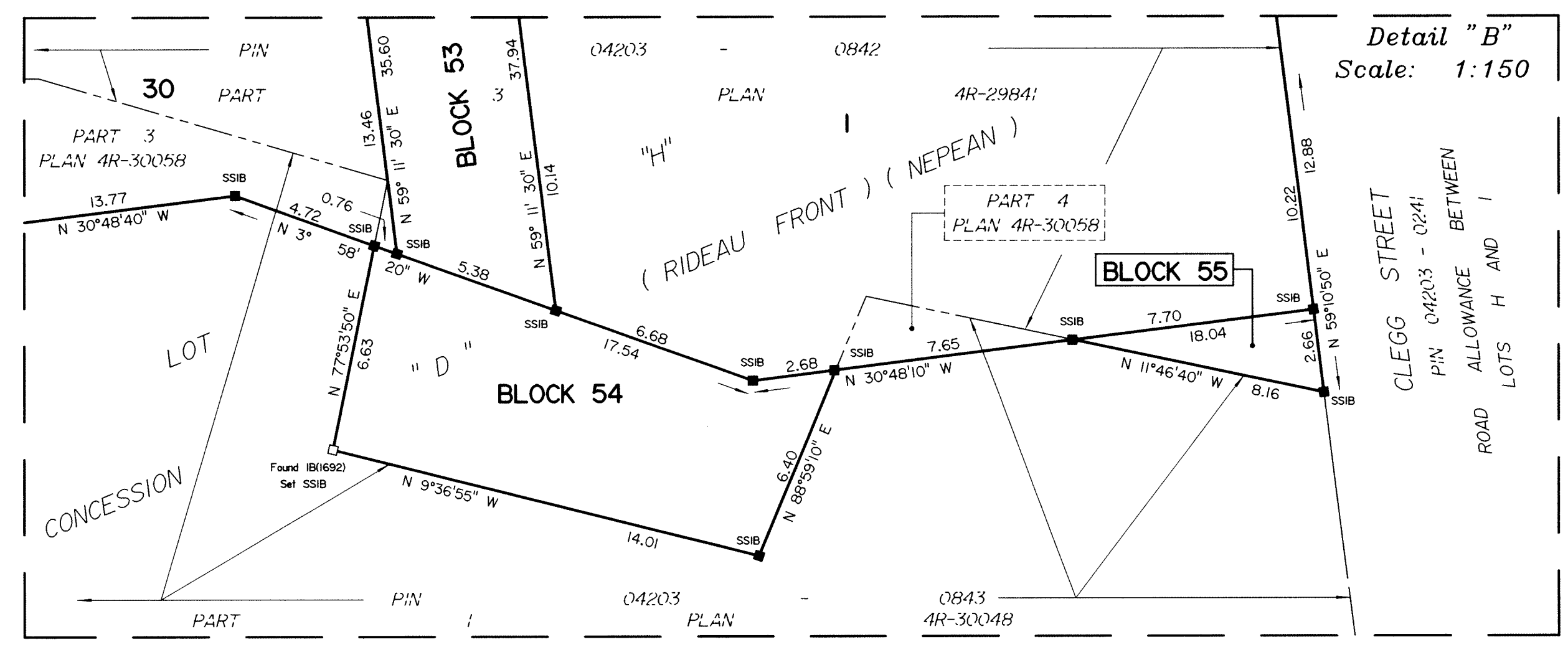
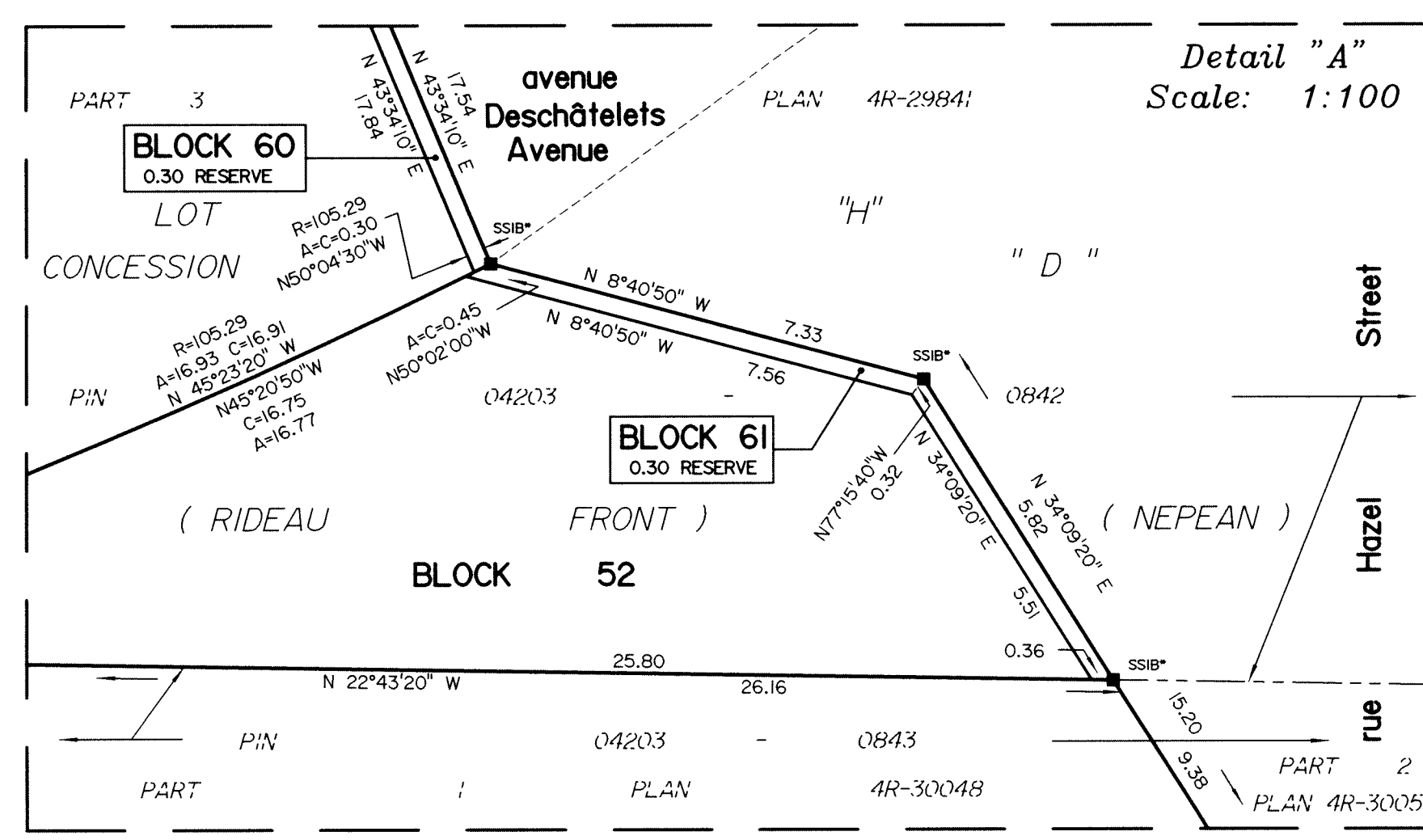


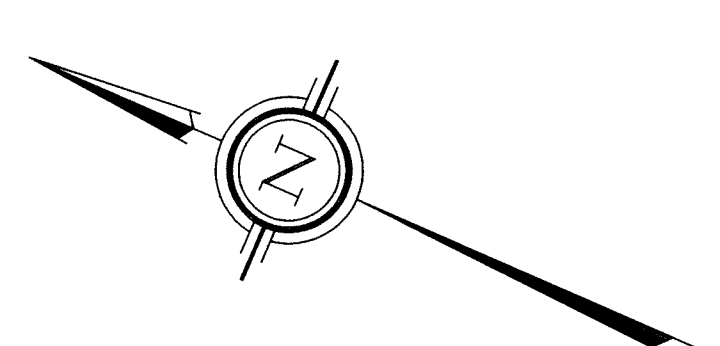
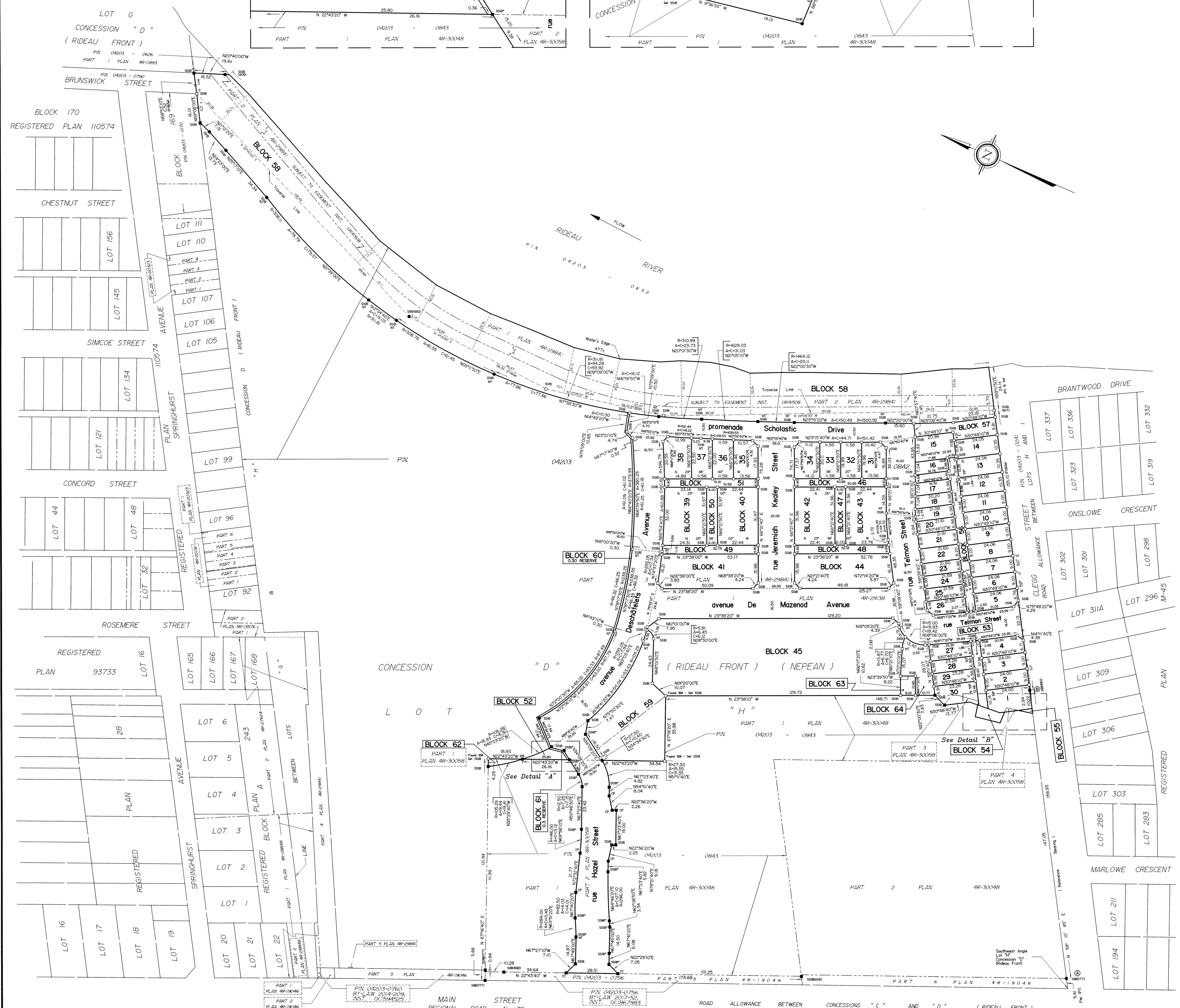
LOT/BLOCK	RADIUS	ARC	CHORD	BEARING
31	1511.42	10.42	10.42	N23°54'40"W
32	1511.42	11.58	11.58	N23°29'40"W
33	1511.42	11.58	11.58	N23°03'20"W
34	1511.42	11.12	11.12	N22°37'30"W
35	1839.53	10.57	10.57	N21°21'30"W
36	1839.53	11.59	11.59	N20°58'10"W
37	1839.53	8.36	8.36	N20°39'20"W
38	321.49	5.23	5.23	N21°43'00"W
39	321.49	12.99	12.99	N20°55'40"W
40	396.79	20.59	20.59	N14°00'10"E
41	396.79	32.00	31.99	N12°27'50"E
42	255.05	16.21	16.21	N17°44'50"E
43	255.05	1.39	1.39	N82°19'30"E
44	15.00	6.41	6.36	N53°43'30"E
45	396.79	3.69	3.69	N11°02'30"E
46	255.05	1.13	1.13	N72°48'00"E
49	396.79	4.60	4.60	N65°49'20"E
51	15.00	13.42	12.97	N41°06'50"W



APPROVED UNDER SECTION 51 OF THE PLANNING ACT BY THE CITY OF OTTAWA
 THIS 26 DAY OF April 2017
 STEPHEN WELLS, MPP
 GENERAL MANAGER
 PLANNING, INFRASTRUCTURE AND ECONOMIC DEVELOPMENT DEPARTMENT
 CITY OF OTTAWA

PLAN 4M-1583
 I CERTIFY THAT THIS PLAN IS REGISTERED IN THE LAND REGISTRY OFFICE FOR THE LAND TILES DIVISION OF OTTAWA-CARLETON NO. 4 AT 12:52 O'CLOCK ON THE 2 DAY OF Dec 2016 AND ENTERED IN THE PARCEL REGISTER FOR PROPERTY IDENTIFIER 04203-0760-000 AND THE REQUIRED CONSENTS ARE REGISTERED AS PLAN DOCUMENT NO. 186693.
 LAND REGISTRAR
 This plan comprises part of the lands identified by PIN 04203-0842 and PIN 4203-0843.
 Block 58 is subject to an easement, Inst. CR141508.

PLAN OF SUBDIVISION OF PART OF LOT "H" CONCESSION "D" (RIDEAU FRONT)
 Geographic Township of Nepean
CITY OF OTTAWA
 Surveyed by Annis, O'Sullivan, Vollebek Ltd.
 Scale 1:750
 Metric DISTANCES AND COORDINATES SHOWN ON THIS PLAN ARE IN METRES AND CAN BE CONVERTED TO FEET BY DIVIDING BY 0.3048.



SURVEYOR'S CERTIFICATE
 THIS IS TO CERTIFY THAT:
 1. This survey and plan are correct and in accordance with the Survey Act, the Surveyors Act and the Land Titles Act and the regulations made under them.
 2. The Survey was completed on the 17th day of March, 2017.
 Date April 10, 2017
 Ontario Land Surveyor

OWNER'S CERTIFICATE
 THIS IS TO CERTIFY THAT:
 1. Lots 2 to 29, both inclusive, Part of Lots 1 and 30, Lots 31 to 30, both inclusive, Blocks 39 to 59, both inclusive, Blocks 63 and 64, the Streets, namely, promenade Scholastic Drive, rue Telmon Street, rue Jeremiah Kealey Street, avenue De Mazenod Avenue, avenue Deschêlets Avenue, Part of rue Hazel Street, and the Reserves, namely, Block 60 and 61, have been laid out in accordance with our instructions.
 2. The Streets are dedicated as public highways.
 Dated the 22 day of April 2017
 David Kardulj (Assistant Secretary)
 City of Ottawa

OWNER'S CERTIFICATE
 THIS IS TO CERTIFY THAT:
 1. Part of Lots 1 and 30, Block 62 and Part of rue Hazel Street, have been laid out in accordance with our instructions.
 2. The Street is dedicated as public highway.
 Dated the 22 day of April 2017
 Norman Masulko (Registrar Administration)
 Université Saint-Paul / Saint-Paul University
 I have authority to bind the corporation.

- NOTES AND LEGEND**
- denotes Survey Monument Planted
 - Survey Monument Found
 - SSB Standard Iron Bar
 - SSSB Short Standard Iron Bar
 - CC Cut Cross
 - IB Iron Bar
 - IBO Bound Iron Bar
 - CP Concrete PIN
 - SSSB* Short Standard Iron Bar (0.3 long)
 - NT Non-Tangential
 - CLF Chain Link Fence
 - BF Board Fence
 - (AOG) Annis, O'Sullivan, Vollebek Ltd.
 - (P1) Plan 4R-29841

All planted survey monuments are IB's unless otherwise noted.
 All found survey monuments are (AOG) unless otherwise noted.
 Bearings and distances shown between found survey monuments on this plan are per Plan 4R-29841.
 Distances shown on curved limits are Arc Distances unless otherwise noted.
 Ties to the water's edge are perpendicular to the Traverse Line unless otherwise noted.
 Water's edge established per Plan 4R-29841.
 Distances shown on this plan are ground distances and can be converted to grid distances by multiplying by the combined scale factor of 0.999941.
 Bearings are grid, derived from the northerly limit of Glegg Street, shown to be N 69°10'45" E on Plan 4R-29865 and are referred to the Central Meridian of MTM Zone 9 (78°30' West Longitude) NAD-83 (original).
 Coordinates are derived from Can-Net 2016 Real Time Network GPS observations referenced to Specified Control Points 0191960005 and 0191960105, MTM Zone 9 (78°30' West Longitude) NAD-83 (original).
 Coordinate values are to urban accuracy in accordance with Reg. 216/10.
 .0191960005 Northing 5027191.26 Easting 361496.76
 .0191960105 Northing 5028415.15 Easting 372971.65
 .Point A Northing 5029941.70 Easting 368281.56
 .Point B Northing 5030023.67 Easting 369418.90
 Caution: Coordinates cannot, in themselves, be used to re-establish corners or boundaries shown on this plan.