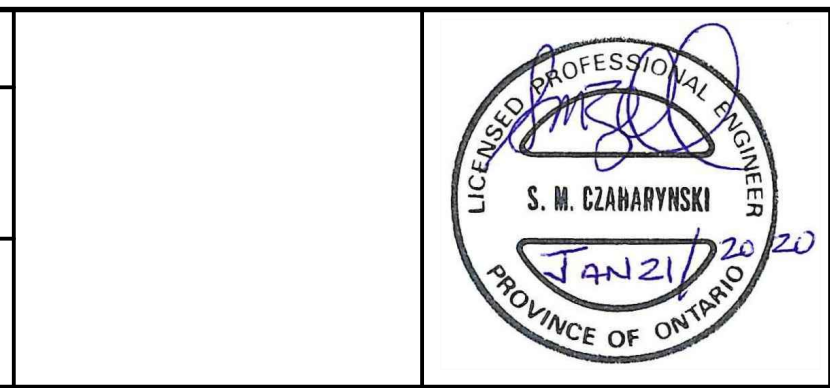
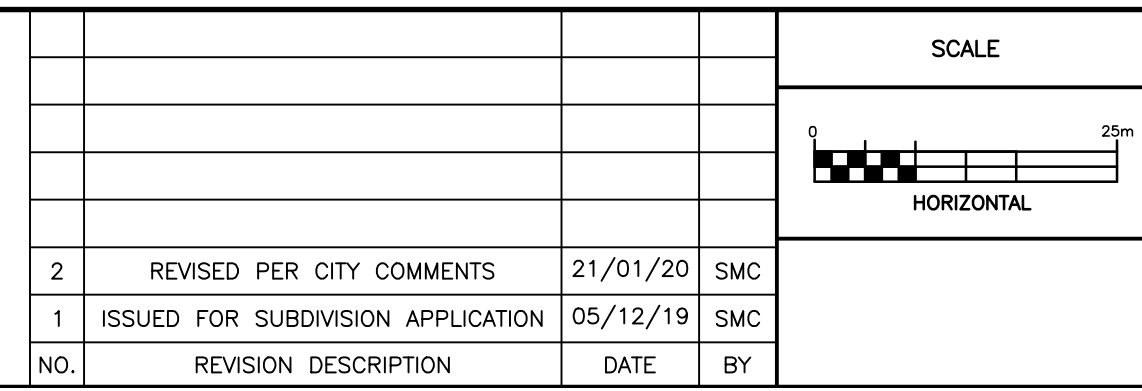


- LEGEND**
- PROPERTY BOUNDARY
 - STORM SEWER AND MANHOLE
 - ROADSIDE CATCH BASIN
 - EXISTING STORM SEWER AND MANHOLE
 - EXISTING CATCH BASIN
 - SWALE
 - SWALE WITH 250mm² SUBDRAIN
 - STORM DRAINAGE AREA BOUNDARY
 - ⇒ MAJOR OVERLAND FLOW ROUTE
-
- RUNOFF COEFFICIENT
 AREA (ha)
 DRAINAGE AREA ID

NOTES

THE POSITION OF ALL POLE LINES, CONDUITS, WATERMANS, SEWERS AND OTHER UNDERGROUND AND OVERGROUND UTILITIES AND STRUCTURES IS NOT NECESSARILY SHOWN ON THE CONTRACT DRAWINGS, AND WHERE SHOWN, THE ACCURACY OF THE POSITION OF SUCH UTILITIES AND STRUCTURES IS NOT GUARANTEED. BEFORE STARTING WORK, DETERMINE THE EXACT LOCATION OF ALL SUCH UTILITIES AND STRUCTURES AND ASSUME ALL LIABILITY FOR DAMAGE TO THEM.

NO.	REVISION DESCRIPTION	DATE	BY
2	REVISED PER CITY COMMENTS	21/01/20	SMC
1	ISSUED FOR SUBDIVISION APPLICATION	05/12/19	SMC



Robinson
Land Development

CONSULTING ENGINEERS
350 PALLADIUM DRIVE
KANATA, ONTARIO K2V 1A8
TELEPHONE (613) 592-6060

DESIGN	BLM
CHECKED	SMC
DRAWN	BLM
CHECKED	SMC
APPROVED	SMC

INVERNESS HOMES
38 AURIGA DRIVE, SUITE 200
OTTAWA, ON K2E 8A6

147 LANGSTAFF DRIVE
CARP, ON

STORM DRAINAGE AREA PLAN

PROJECT No.	19008
SURVEY	RLD
DATED	JANUARY 2020
DWG. No.	19008-STM1