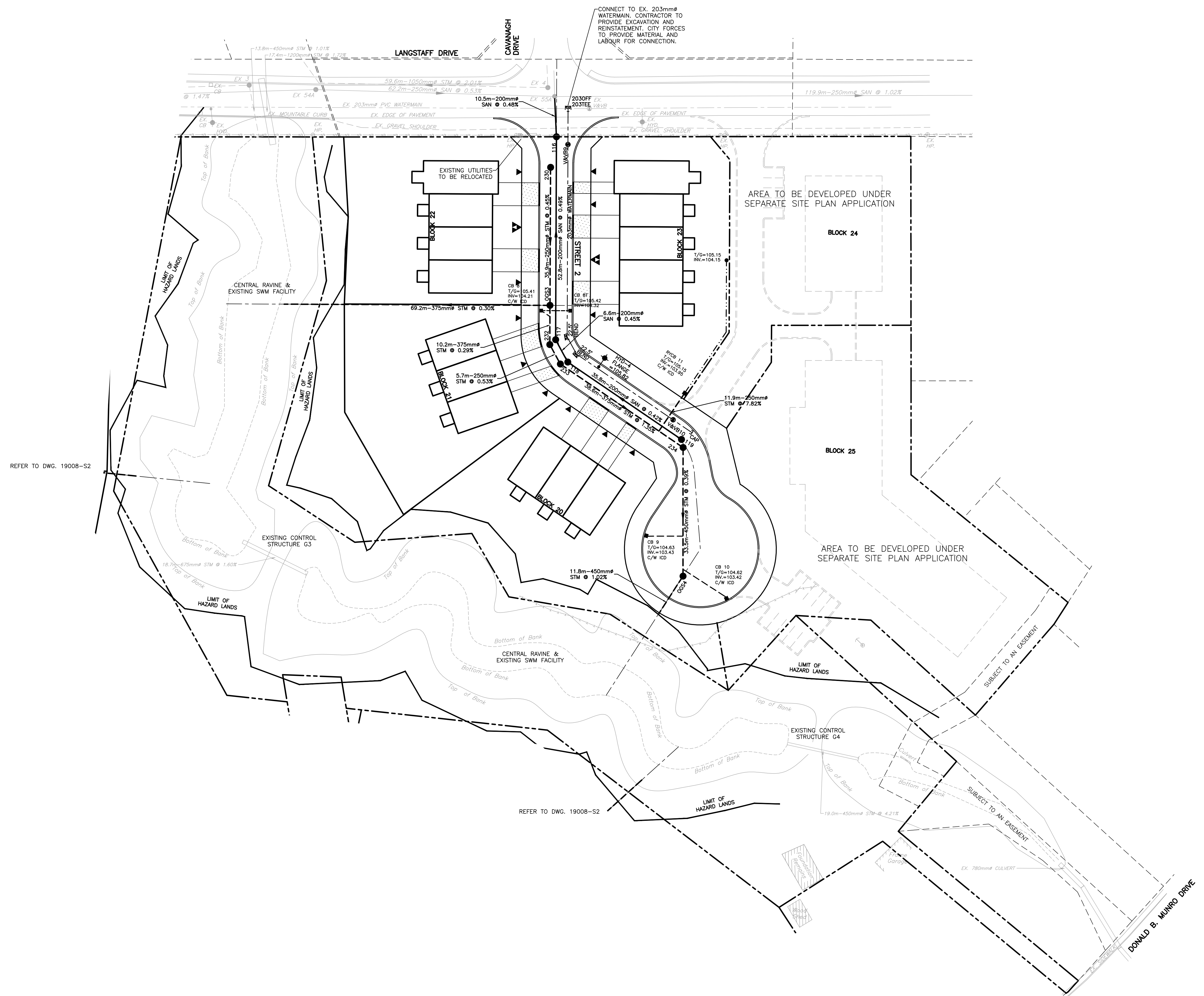


LEGEND

▼	SINGLE SERVICE	135mm ^ø SANITARY
		100mm ^ø STORM
		19mm ^ø WATER
▼▼	DOUBLE SERVICE	2-135mm ^ø SANITARY
		2-100mm ^ø STORM
		2-19mm ^ø WATER
---	PROPERTY BOUNDARY	
●	SANITARY SEWER AND MANHOLE	
○	STORM SEWER AND MANHOLE	
---	WATERMAIN	
⊕	VALVE AND VALVE BOX	
⊕	HYDRANT WITH VALVE AND VALVE BOX	
■	ROADSIDE CATCH BASIN	
●	LANDSCAPE CATCH BASIN	
---	SWALE WITH 250mm ^ø SUBDRAIN	
○	EXISTING SANITARY SEWER AND MANHOLE	
○	EXISTING STORM SEWER AND MANHOLE	
---	EXISTING WATERMAIN	
□	EXISTING CATCH BASIN	
⊕	EXISTING HYDRANT	
---	EXISTING DITCH	

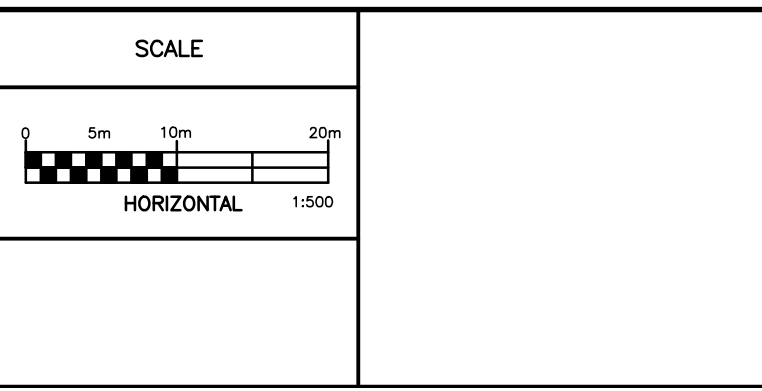


NOTES

THE POSITION OF ALL POLE LINES, CONDUITS, WATERMANS, SEWERS AND OTHER UNDERGROUND AND OVERGROUND UTILITIES AND STRUCTURES IS NOT NECESSARILY SHOWN ON THE CONTRACT DRAWINGS, AND WHERE SHOWN, THE ACCURACY OF THE POSITION OF SUCH UTILITIES AND STRUCTURES IS NOT GUARANTEED. BEFORE STARTING WORK, DETERMINE THE EXACT LOCATION OF ALL SUCH UTILITIES AND STRUCTURES AND ASSUME ALL LIABILITY FOR DAMAGE TO THEM.

NO.	REVISION DESCRIPTION	DATE	BY
2	REVISED PER CITY COMMENTS	21/01/20	SMC
1	ISSUED FOR SUBDIVISION APPLICATION	05/12/19	SMC

SCALE	
0	5m 10m 20m
HORIZONTAL 1:500	



Robinson
Land Development

CONSULTING ENGINEERS
350 PALLADIUM DRIVE
KANATA, ONTARIO K2V 1A8
TELEPHONE (613) 592-6060

DESIGN	BLM
CHECKED	SMC
DRAWN	BLM
CHECKED	SMC
APPROVED	SMC

INVERNESS HOMES
38 AURIGA DRIVE, SUITE 200
OTTAWA, ON K2E 8A6

147 LANGSTAFF DRIVE
CARP, ON

SERVICING PLAN

PROJECT No.	19008
SURVEY	RLD
DATED	JANUARY 2020
DWG. No.	19008-S3