

10.0 CONCLUSIONS/ RECOMMENDATIONS

This servicing and stormwater management report is being submitted to support the proposed development of 75 townhouse units and 114 apartment units within the Village of Carp. The report demonstrates that the development can be adequately serviced for water, sanitary, storm and also meet stormwater management requirements by implementing the following key design features:

- A proposed on-site watermain system with connections to the existing watermains on Langstaff Drive and Carp Road.
- A proposed on-site sanitary sewer system with connections to the existing sanitary sewers on Langstaff Drive and Carp Road.
- A proposed on-site storm sewer system which outlets to the existing SWM ravine.
- Utilization of the existing SWM ravine and control structures for stormwater quantity storage and detention for events up to and including the 100 year design storm.
- Four inline stormwater treatment units to provide enhanced level quality control of stormwater runoff prior to discharging into the existing SWM ravine.
- Major overland flow routes which convey excess runoff to the existing SWM ravine.
- Erosion and sediment control measures to mitigate impacts to the receiving watercourse and existing infrastructure.

Report Prepared By:



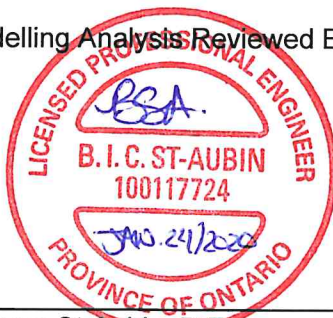
Brandon MacKechnie, P.Eng.
Project Engineer

Report Reviewed By:

Sean Czaharynski, P.Eng.
Manager – Land Development



Modelling Analysis Reviewed By:



Barbara St-Aubin, P.Eng.
Manager – Water Resource Services