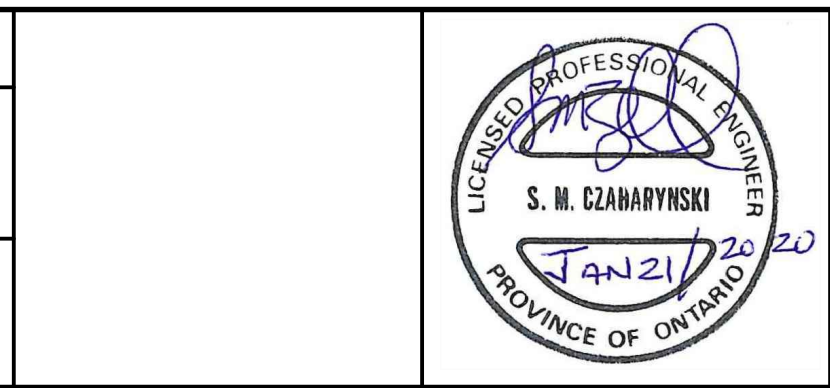
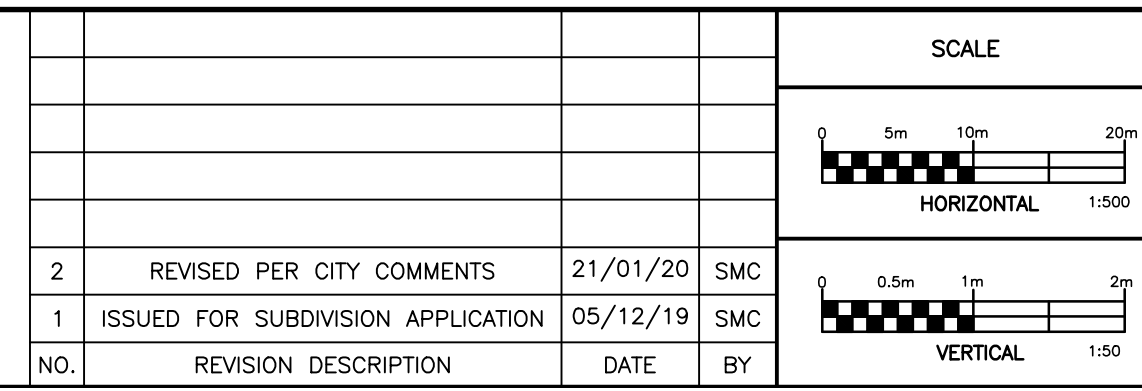


STATION	PROPOSED CENTRELINE ROAD GRADE	TOP OF WATERMAIN ELEVATION	STORM SEWER INVERT	SANITARY SEWER INVERT	ORIGINAL GROUND ELEVATION
0+982.7		2030FF 2031TE 105.52			
0+985.9	108.02	105.58	105.90 SW	105.40 SW	108.02
1+000	107.53		35.0m-250mm STM @ 1.29%	37.7m-200mm SAN @ 1.08%	107.53
1+004.9		105.81			
1+006.1		V&VB			
1+025					
1+031.6		105.31			
0+043.5		4+45' 105.30			
0+042		105.04			
0+039.1		105.04			
1+050		2030FF 2031TE 105.72			
0+000	107.63	105.72	105.90 SE	105.38 SE	107.63
0+002.3					
0+007		105.72			
0+025			38.1m-250mm STM @ 1.47%	37.7m-200mm SAN @ 1.09%	107.42
0+033.1		105.55			
0+039.1		105.39			
0+043.5		2030FF 2031TE 105.24			
0+050					
0+053		105.24			
0+075					
0+082		105.20			
0+088.9		1520FF 2031TE 105.00			
0+091.2					
0+092.4		105.00			
0+100					
0+103		104.79			
0+118.2		104.84			
0+125		104.60			
0+150	105.71	104.46	104.60 SW	104.01 SW	105.71

NOTES

THE POSITION OF ALL POLE LINES, CONDUITS, WATERMANS, SEWERS AND OTHER UNDERGROUND AND OVERGROUND UTILITIES AND STRUCTURES IS NOT NECESSARILY SHOWN ON THE CONTRACT DRAWINGS, AND WHERE SHOWN, THE ACCURACY OF THE POSITION OF SUCH UTILITIES AND STRUCTURES IS NOT GUARANTEED. BEFORE STARTING WORK, DETERMINE THE EXACT LOCATION OF ALL SUCH UTILITIES AND STRUCTURES AND ASSUME ALL LIABILITY FOR DAMAGE TO THEM.

NO.	REVISION DESCRIPTION	DATE	BY
2	REVISED PER CITY COMMENTS	21/01/20	SMC
1	ISSUED FOR SUBDIVISION APPLICATION	05/12/19	SMC



Robinson Land Development
CONSULTING ENGINEERS
350 PALLADIUM DRIVE
KANATA, ONTARIO K2V 1A8
TELEPHONE (613) 592-6060

DESIGN	BLM
CHECKED	SMC
DRAWN	BLM
CHECKED	SMC
APPROVED	SMC

INVERNESS HOMES
38 AURIGA DRIVE, SUITE 200
OTTAWA, ON K2E 8A6

147 LANGSTAFF DRIVE
CARP, ON

PLAN AND PROFILE
STREET 1
STA. 1+000 TO STA. 1+050
STA. 0+000 TO STA. 0+150

PROJECT No.	19008
SURVEY	RLD
DATED	JANUARY 2020
DWG. No.	19008-P1