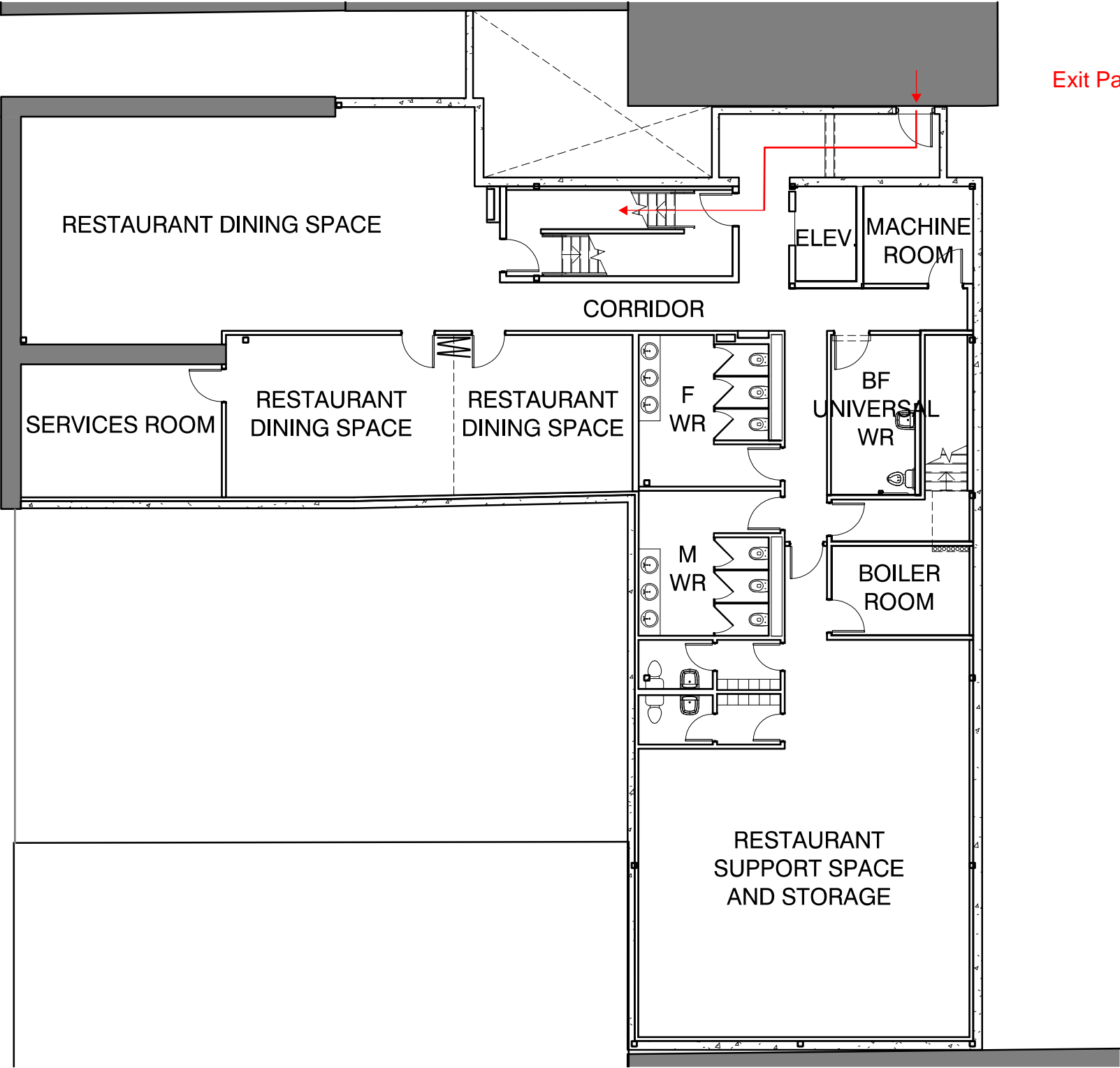


# 35 - 37 WILLIAM STREET RECONSTRUCTION AFTER FIRE

BASEMENT PLAN  
1 : 150

H-02



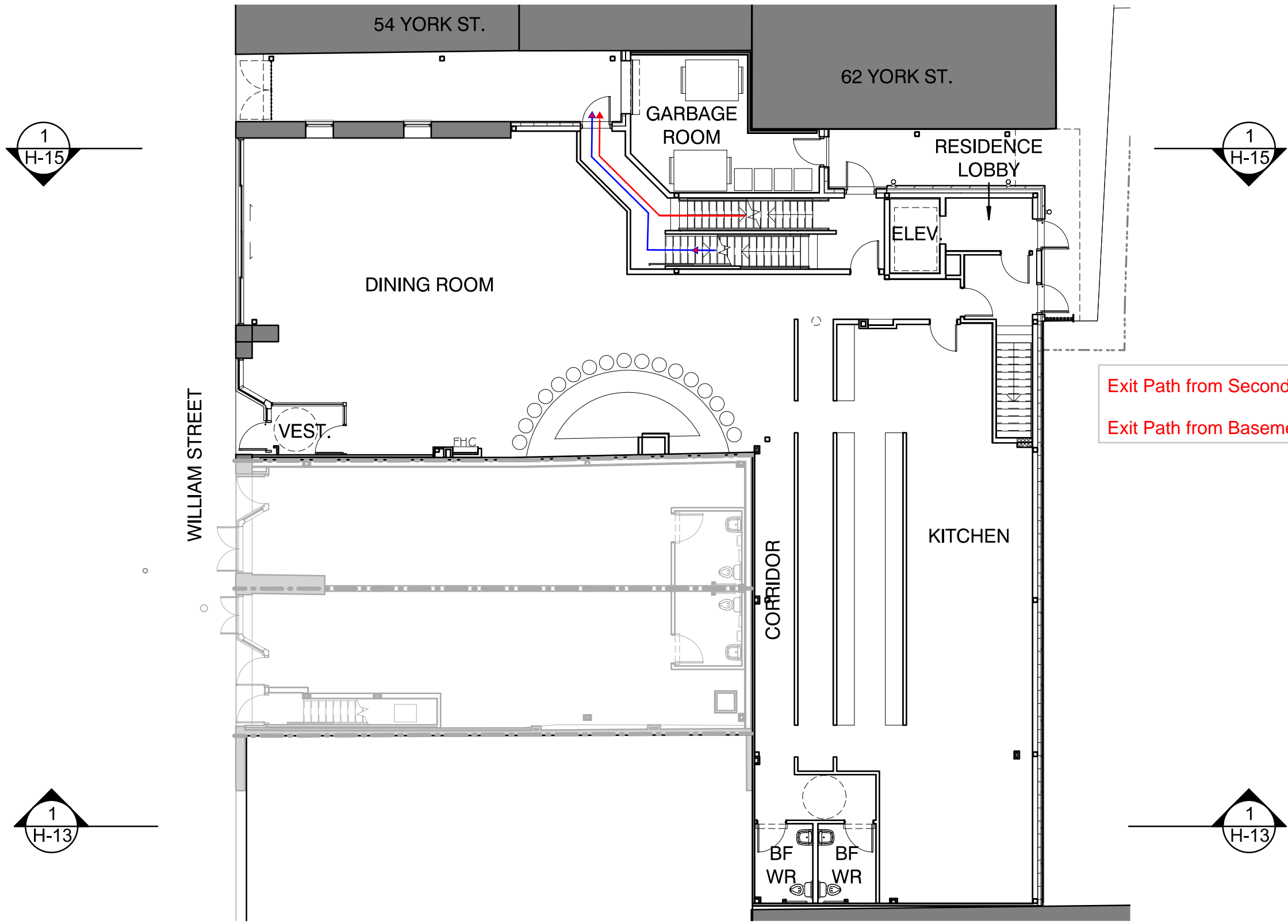
Exit Path from Basement of 62 York in Red



# 35 - 37 WILLIAM STREET RECONSTRUCTION AFTER FIRE

GROUND FLOOR PLAN  
1 : 150

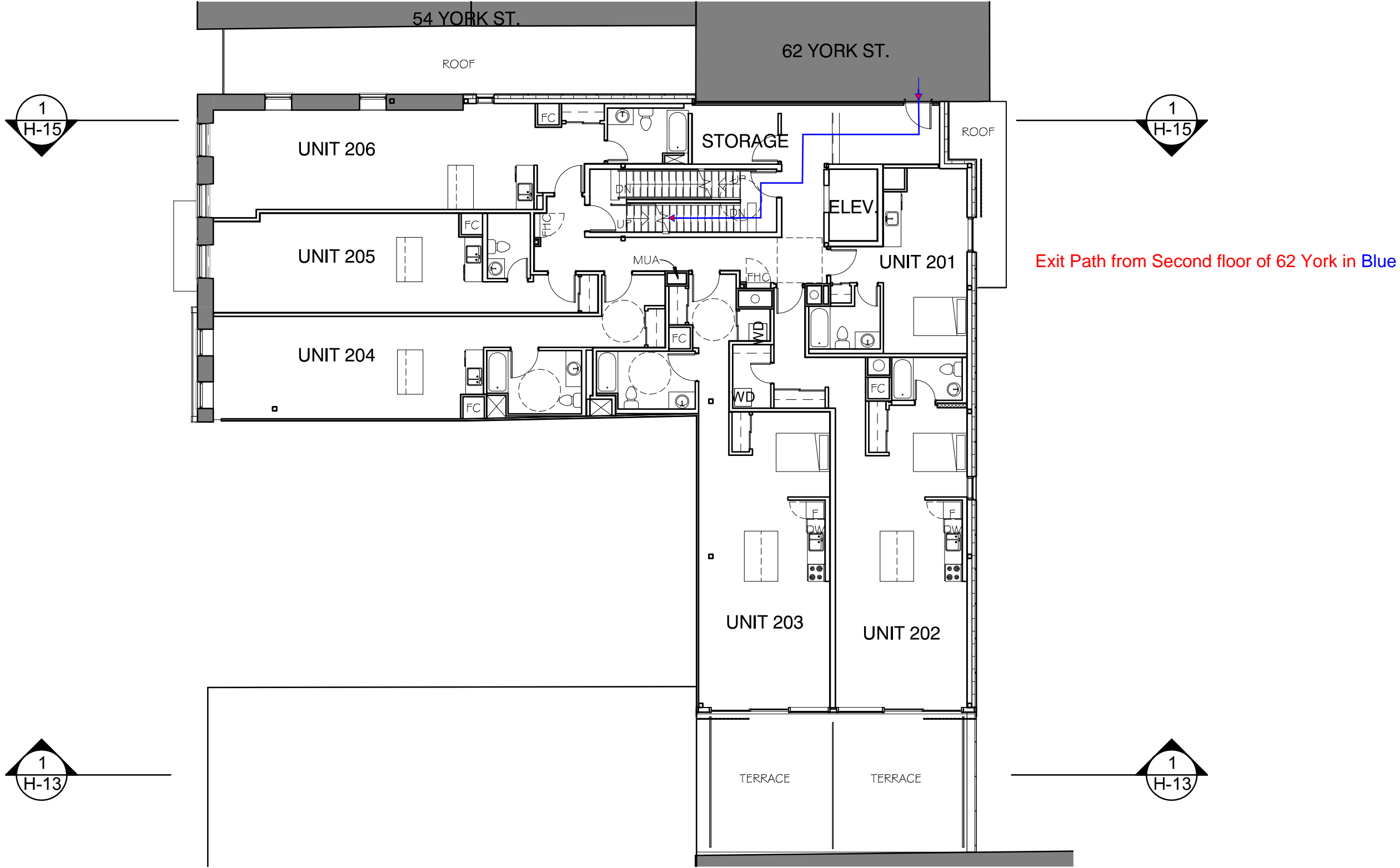
H-03



Exit Path from Second floor of 62 York in Blue  
Exit Path from Basement of 62 York in Red



# 35 - 37 WILLIAM STREET RECONSTRUCTION AFTER FIRE



Exit Path from Second floor of 62 York in Blue

