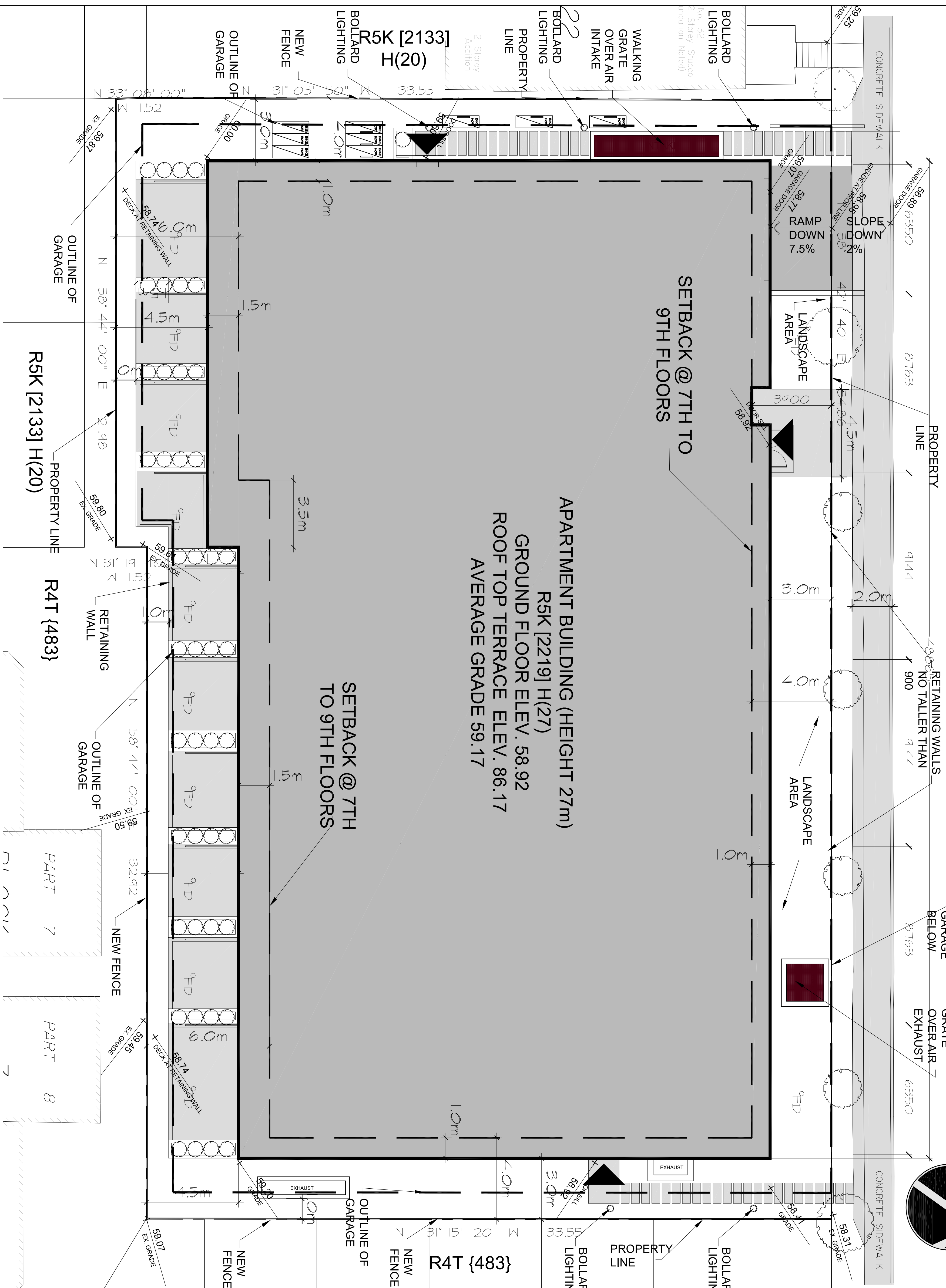
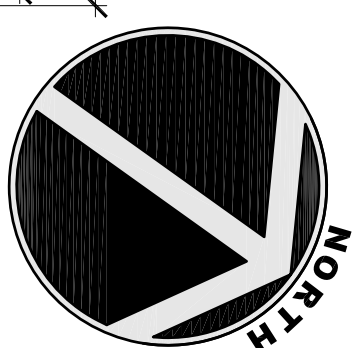


Robinson Avenue



1 SITE PLAN
SP-1 1:100

SITE DATA

SITE STATISTICS	60255 FLOOR AREA 1,136 m ²
LOT COVER AREA	1675 m ²
TOTAL GARAGE BUILDING AREA	1291 m ²
TOTAL LOT GARAGE AREA	691 m ²
TOTAL LANDSCAPING AREA	359 m ²
TOTAL LOT LANDSCAPING AREA	1578 m ²
TOTAL LOT LANDSCAPING AREA (EXCLUDING EXISTING)	2481 m ²

PARKING PROVISIONS 2008-250 SECTION 100-114	REQUIRED	PROVIDED
RESERVED	11	11
PERMITTED	11	11
TOTAL	22	22

APARTMENT REQUIRED	544	APARTMENT PROVIDED	544
GREEN WASTE STORAGE	143	GREEN WASTE STORAGE	143
GREEN WASTE STORAGE	44240 L	GREEN WASTE STORAGE	44240 L

GRAPHIC SCALE	1 : 100				
1m	2m	3m	4m	5m	10m

SURVEY INFORMATION	PLAN OF SURVEY OF PART OF LANE ADJACENT TO LOTS 15, 16, 18, 19, 21 AND 22) REGISTERED PLAN 190 CITY OF OTTAWA
--------------------	---

SITE STATISTICS	PLANNED UNIT DEVELOPMENT ZONING MECHANISM	REQUIRED	PROPOSED
MIN. WIDTH OF DRIVEWAY	6.0m	6.0m	6.0m
MIN. WIDTH OF DRIVE ABLE WIDTH	6.0m	6.0m	6.0m

SETBACKS (AS PER ZONING MAP)	REQUIRED	PROVIDED
FRONT YARD - NORTH	1.0m	1.0m
FRONT YARD - EAST	4.0m	4.0m
FRONT YARD - WEST	4.0m	4.0m
REAR YARD - SOUTH	4.0m	4.0m
MIN. LOT WIDTH	15.0m	15.0m
MIN. LOT AREA	490m ²	1875m ²
MAX. BUILDING HEIGHT	27m	27m
MAX. FLOOR SPACE INDEX	2.0	1.666
MIN. PERCENTAGE OF LANDSCAPED AREAS	50%	NO MIN.
MIN. ABUTTING A STREET (m)	NO MIN.	NO MIN.
OTHER CASES (m)	NO MIN.	NO MIN.

MIN. TOTAL ABUTTING AREA (m ²) APARTMENT OF 4 STOREYS AND 91 UNITS	2112m ²
MIN. CONVEYANCE AREA (m ²)	1186m ²
MIN. CONVEYANCE AREA (m ²)	1186m ²
PERMITTED PROJECTIONS PROVISIONS IN THE CASE OF ANY YARDS	1.5m BUT NO OVERHANG TO TOTAL LINE
DRIVEWAY SLOPE FIRST 6 METERS WILL NEED TO BE HEATED	1.5m BUT NO OVERHANG TO TOTAL LINE

CONSULTANTS	CIVIL ENGINEER
ARCHITECT	HOBIN ARCHITECTURE INC.
TRAFFIC PLANNING	URBAN PLANNING
GEOTECHNICAL	ANIS CONSULTANTS INC.
LANDSCAPE ARCHITECT	SOUND & VIBRATION CONSULTANTS INC.

CONTACT: HOBIN ARCHITECTURE INC.	CONTACT: CIVIL ENGINEER
TEL: 613-285-7200	TEL: 613-750-5104
FAX: 613-285-2005	FAX: 613-750-5104
OTTAWA, ON K1S 9K7	OTTAWA, ON K2S 1K4

CONTACT: URBAN PLANNING	CONTACT: ANIS CONSULTANTS INC.
TEL: 613-285-7200	TEL: 613-285-7200
FAX: 613-285-2005	FAX: 613-285-7200
OTTAWA, ON K2P 0Z8	OTTAWA, ON K2E 7S6

CONTACT: SOUND & VIBRATION CONSULTANTS INC.	CONTACT: LANDSCAPE ARCHITECT
TEL: 613-722-5169	TEL: 613-285-7200
FAX: 613-722-5169	FAX: 613-285-2005
OTTAWA, ON K1Z 7L6	OTTAWA, ON K2E 7S6

CONTACT: HOBIN ARCHITECTURE	CONTACT: HOBIN ARCHITECTURE
TEL: 613-285-7200	TEL: 613-285-7200
FAX: 613-285-2005	FAX: 613-285-2005
OTTAWA, ON K1S 9K7	OTTAWA, ON K2E 7S6

NO.	DATE	REVISION
1	14/01/25	REV. FOR SITE PLAN CONTROL.
2	14/01/22	ISSUED FOR REVIEW
3	14/01/15	REV. FOR SITE PLAN CONTROL.
4	14/01/07	REV. FOR SITE PLAN CONTROL.
5	14/01/02	REV. FOR SITE PLAN CONTROL.
6	14/01/02	REV. FOR SITE PLAN CONTROL.
7	14/01/02	REV. FOR SITE PLAN CONTROL.
8	14/01/02	REV. FOR SITE PLAN CONTROL.
9	14/01/02	REV. FOR SITE PLAN CONTROL.
10	14/01/02	REV. FOR SITE PLAN CONTROL.
11	14/01/02	REV. FOR SITE PLAN CONTROL.
12	14/01/02	REV. FOR SITE PLAN CONTROL.

It is the responsibility of the appropriate persons on site and report all errors and/or omissions to the architect.
All contractors must comply with all pertinent codes and by-laws.
Do not scale drawings.
This drawing may not be used for construction until signed.
Copyright reserved.

Hobin Architecture
Incorporated
63 Pamela Street
Ottawa, Ontario
Canada K1S 9K7
T: 613-285-7200
F: 613-285-2005
E: info@hobin.com
www.hobin.com

HOBIN ARCHITECTURE

Project Title:
ROBINSON VILLAGE APARTMENT BUILDING
Drawing Title:
SITE PLAN

DATE	SCALE
JAN 10 2014	1:100
PROJECT	1034
DRAWING NO.	SP-1

ONTARIO ASSOCIATION OF ARCHITECTS
11 HOBIN ARCHITECTURE INC. 3049
SP-1
17908