

Copyright Reserved

The Contractor shall verify and be responsible for all dimensions. DO NOT scale the drawing - any errors or omissions shall be reported to Stantec without delay. The Copyrights to all designs and drawings are the property of Stantec. Reproduction or use for any purpose other than that authorized by Stantec is forbidden.

Legend

- EXISTING DECIDUOUS TREE TO REMAIN
- EXISTING VEGETATION GROUP TO REMAIN
- PROPOSED DECIDUOUS TREE
- PROPOSED SHRUBS
- PROPOSED PERENNIAL
- PLANT SPECIES/QUANTITY KEY
- PROPOSED PLANTING BED
- PROPOSED RIVER STONES REFER TO DETAIL 5/L300
- PROPOSED PAVERS REFER TO DETAIL 6/L300
- T/SOD PROPOSED TOPSOIL AND SOD
- PROPERTY LINE

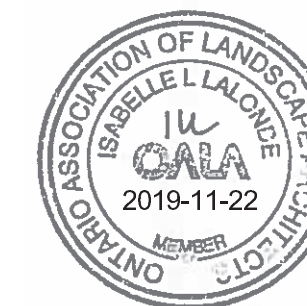
Notes

- TOPOGRAPHIC SURVEY AND BENCHMARK COMPLETED BY STANTEC GEOMATICS LTD. DATED APRIL 12, 2018
- SITE PLAN PREPARED BY FIGURR ARCHITECTS DATED NOVEMBER 2019

4	REVISED SITE PLAN	CTL	ILL	2019.11.22
3	REVISIONS BASED ON NEW SITE PLAN	CTL	ILL	2019.08.26
2	REVISIONS BASED ON COMMENTS	CTL	ILL	2019.06.17
1	ISSUED TO CITY FOR REVIEW	MHS	ILL	18.10.26
Revision		By	Appd.	YY.MM.DD

File Name:	160401428-L	MHS	ILL	ILL	18.07.04
		Dwn.	Chkd.	Dsgn.	YY.MM.DD

Permit-Seal



Client/Project

ROBINSON VILLAGE II
LIMITED PARTNERSHIP

3 STOREY APARTMENT
29 ROBINSON AVENUE
OTTAWA, ONTARIO

Title

LANDSCAPE PLAN

Project No.	160401428	Scale	0 1.5 4.5 1:150	7.5m
Drawing No.	Sheet	Revision		

L200

2 of 3

4

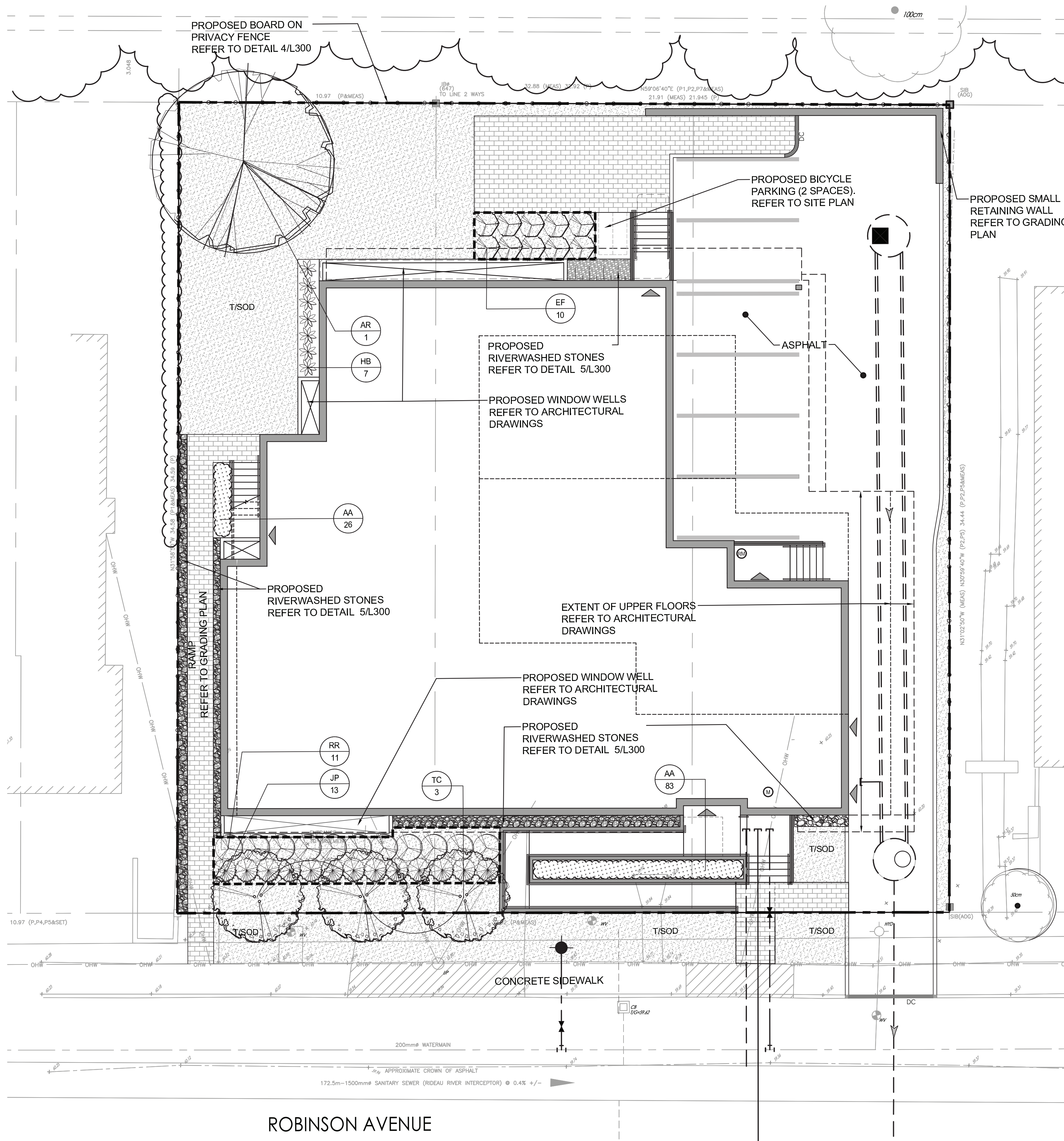
DWG 17855

PLANT LIST

QTY	KEY	BOTANICAL NAME	COMMON NAME	SIZE	SPACING
DECIDUOUS TREES - REFER TO DETAIL 1/L300					
1	AR	<i>Acer rubrum</i> 'Franksred'	Red Sunset Red Maple	60 mm (cal.)	W.B
3	TC	<i>Tilia cordata</i> 'Halka'	Summer Sprite Linden	60 mm (cal.)	W.B
DECIDUOUS SHRUBS - REFER TO DETAIL 3/L300					
11	RR	<i>Rosa rugosa</i>	Rugosa Rose	3 gal.	Potted; Plant at 1250 mm o/c
BROAD-LEAVED EVERGREEN SHRUBS - REFER TO DETAIL 3/L300					
10	EF	<i>Euonymus fortunei</i> 'Blondy'	Blondy Euonymus	3 gal.	Potted; Plant at 1000 mm o/c
CONIFEROUS SHRUBS - REFER TO DETAIL 3/L300					
13	JP	<i>Juniperus horizontalis</i> 'Plumosa Compacta'	Compact Andorra Juniper	3 gal.	Potted; Plant at 1000 mm o/c
PERENNIALS - REFER TO DETAIL 2/L300					
109	AA	<i>Astilbe crisa</i> 'Perkeo'	Perkeo False Spirea	1 gal.	Potted; Plant at 250 mm o/c
7	HB	<i>Hosta</i> 'Bressingham Blue'	Bressingham Blue Hosta	1 gal.	Potted; Plant at 750 mm o/c

GENERAL LANDSCAPE PLAN NOTES

- REFER TO TREE PRESERVATION PLAN FOR INFORMATION RELATED TO TREE REMOVAL / TREE PROTECTION DIRECTIONS. UNLESS OTHERWISE NOTED, EXISTING VEGETATED AREAS ON ADJACENT PROPERTIES SHALL REMAIN AND BE PROTECTED BEFORE, DURING, AND AFTER CONSTRUCTION.
- SOD SHALL BE KENTUCKY BLUEGRASS SOD INSTALLED OVER 135mm OF TOPSOIL. SOD SHALL BE INSTALLED THROUGHOUT WITHIN LIMIT OF WORK AND IN ALL DISTURBED AREAS OUTSIDE THE LIMIT OF WORK. SOD SHALL BE INSTALLED AS PER OPSS 803.
- CONTRACTOR TO LOCATE AND STAKE ALL UTILITIES PRIOR TO ANY WORK ON THE SITE. DO NOT PLANT DIRECTLY ABOVE UNDERGROUND UTILITIES. REPORT ANY DISCREPANCIES TO THE LANDSCAPE ARCHITECT FOR DIRECTION.
- MAINTAIN A MINIMUM DISTANCE OF 2.0m FROM ALL UNDERGROUND UTILITIES.
- NO TREES SHALL BE PLANTED UNDER OVERHEAD WIRES.
- THE LANDSCAPE ARCHITECT MAY ADJUST THE LOCATION OF PLANTING PRIOR TO PLANTING TO MINIMIZE CONFLICTS WITH UTILITIES, DRIVEWAYS AND INTERSECTION VISIBILITY.
- CONTRACTOR SHALL SUPPLY ALL MATERIALS IN QUANTITIES SUFFICIENT TO COMPLETE WORK SHOWN ON THESE DRAWINGS. ANY DISCREPANCIES SHALL BE REPORTED TO THE LANDSCAPE ARCHITECT FOR DIRECTION.
- DO NOT MAKE SUBSTITUTIONS OF MATERIALS, PRODUCTS OR QUANTITIES WITHOUT PRIOR WRITTEN PERMISSION OF THE LANDSCAPE ARCHITECT.
- THE CONTRACTOR TO MAKE GOOD TO THE SATISFACTION OF THE LANDSCAPE ARCHITECT ANY AREAS DAMAGED BY THE WORK.
- UPON THE COMPLETION OF WORK EACH DAY, REMOVE ALL DEBRIS, GARBAGE AND SURPLUS MATERIALS FROM THE SITE. KEEP THE SITE CLEAN AND USEABLE AT ALL TIMES.
- ALL WORKMANSHIP AND MATERIALS (INCLUDING PLANTS) TO BE GUARANTEED FOR ONE FULL YEAR FOLLOWING FINAL ACCEPTANCE OF THE PROJECT.
- THE CONTRACTOR SHALL REMOVE ALL T-BAR AND WOODEN TREE STAKES PRIOR TO ASSUMPTION BY THE OWNER.
- AT THE TIME OF INSPECTION FOR ACCEPTANCE ALL TREE PITS, AND BEDS SHALL BE CULTIVATED, FREE OF WEEDS, LEAVES, BROKEN BRANCHES AND DEBRIS.



1 LANDSCAPE PLAN
1:150