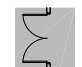

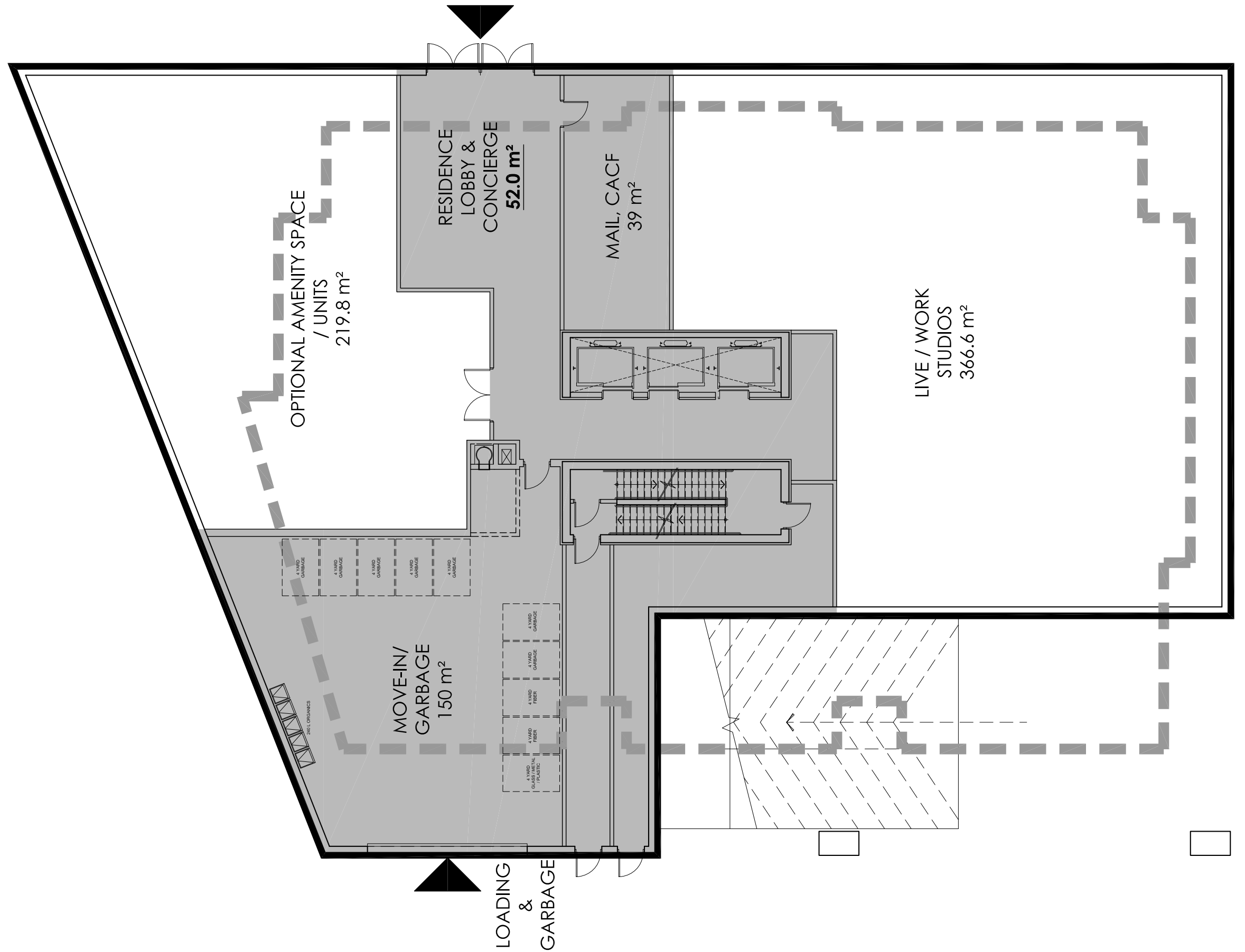
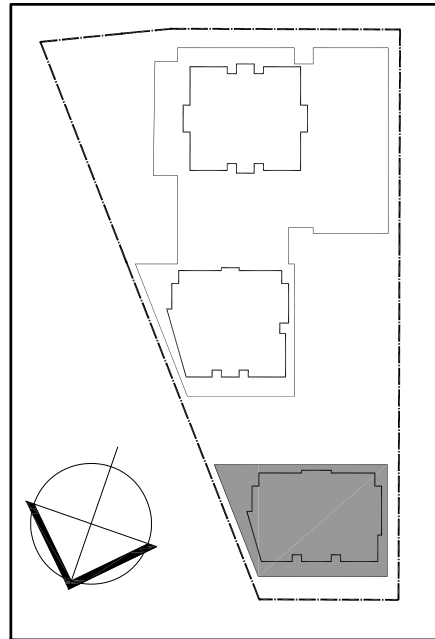


TOWER 3

GROUND FLOOR x1 (Flr. 1)		
GFA	10,656 ft ²	(990 m ²)
RESIDENTIAL	6,710 ft ²	(623.4 m ²)
LIVE/WORK	3,946 ft ²	(366.6 m ²)

KEY PLAN

-  Residential Circulation
-  Office Circulation



GLADSTONE + LORETTA
Residential Tower 3

Ground Floor Plan

scale 1:150

