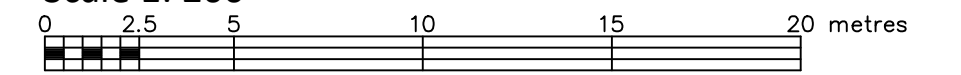


PART OF BLOCK 1 REGISTERED PLAN 492 CITY OF OTTAWA

FARLEY, SMITH & DENIS SURVEYING LTD. 2019

Scale 1: 200



Metric Note

Distances and coordinates on this plan are in metres and can be converted to feet by dividing by 0.3048.

Distance Note

Distances shown on this plan are ground distances and can be converted to grid distances by multiplying by the combined scale factor of 0.99993.

Bearing Note

Bearings are grid and are derived to the Northerly limit of Block 1 having a bearing of N 57° 46' 20" E as shown on Plan 4R-27017, and are referred to the Central Meridian of MTM Zone 5 (76°30' West Longitude) Nad-83 (Original).

For bearing comparisons, a rotation of 0°34'40" counter-clockwise was applied to bearings on P1, P3, P4 & P5.

Elevation Notes

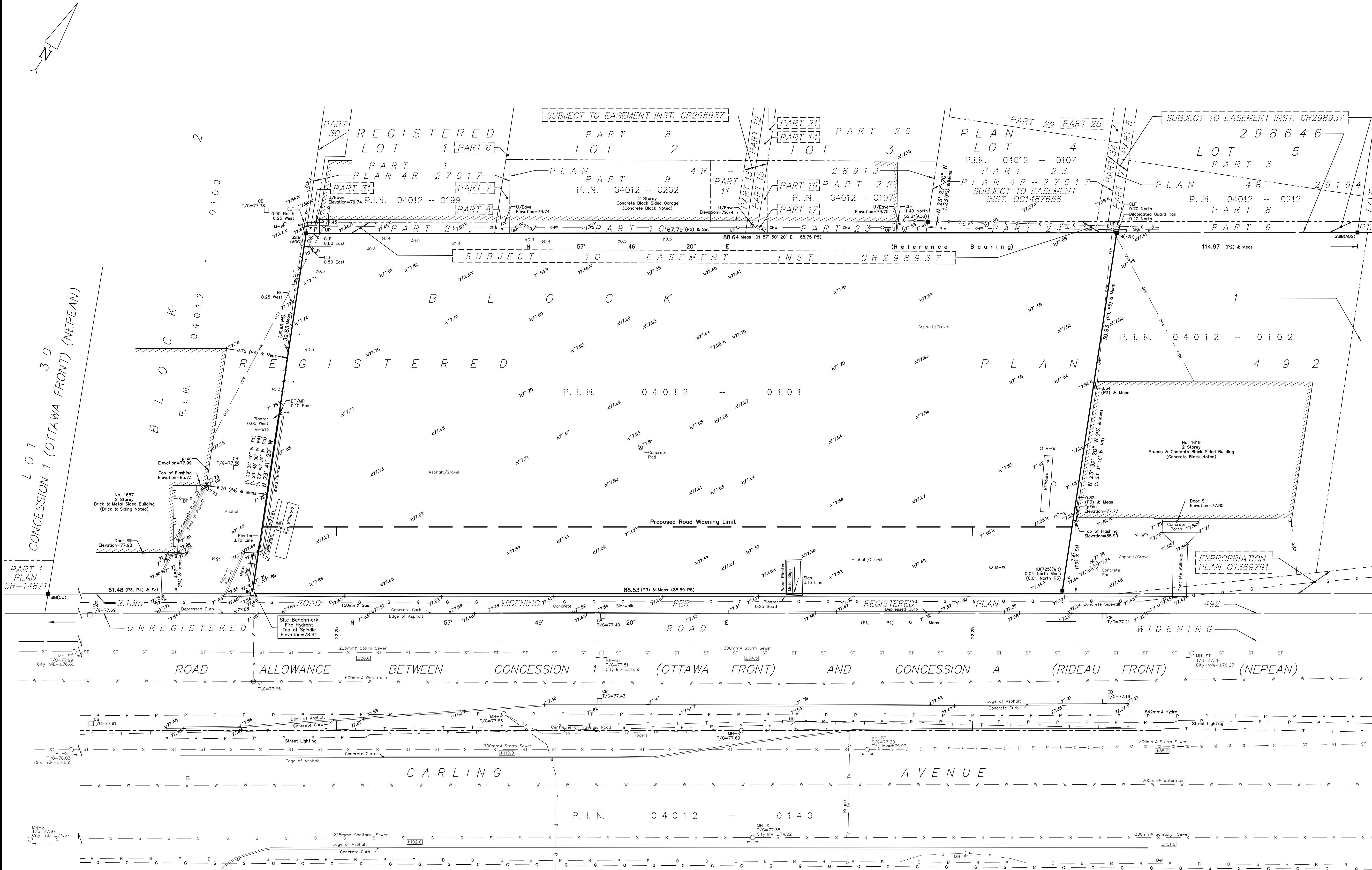
- 1. Elevations shown are geodetic and are referred to Geodetic Datum CGVD-1928-1978. (See AOG Job No. 18524-17)
2. It is the responsibility of the user of this information to verify that the job benchmark has not been altered or disturbed and that its relative elevation and description agrees with the information shown on this drawing.

Utility Notes

- 1. This drawing cannot be accepted as acknowledging all of the utilities and it will be the responsibility of the user to contact the respective utility authorities for confirmation.
2. Only visible surface utilities were located.
3. Underground utility data derived from City of Ottawa utility sheet reference: F-04-35, F-04-37, 6047pp1 & A19g-3.
4. Sanitary and storm sewer grades and inverts were compiled from: City of Ottawa Plans.
5. A field location of underground plant by the pertinent utility authority is mandatory before any work involving breaking ground, probing, excavating etc.

Notes & Legend

Table with 2 columns: Symbols and Descriptions. Includes Survey Monument Found, Standard Iron Bar, Short Standard Iron Bar, Iron Bar, Witness, Measured, Registered Plan 492, Plan 4R-27017, Plan by (1236) dated October 23, 1996, etc.



Surveyor's Certificate section containing a declaration of accuracy, date (May 27, 2019), signature of Jamie Leslie, and contact information for Farley, Smith & Denis Surveying Ltd.

TOPOGRAPHIC DATA WAS COLLECTED UNDER WINTER CONDITIONS. SNOW COVER AND ICE PRECLUDE DETERMINING LOCATION AND ELEVATION OF SOME TOPOGRAPHICAL DATA THAT IS OTHERWISE VISIBLE.
WARNING: NO PERSON MAY COPY, REPRODUCE, DISTRIBUTE OR ALTER THIS PLAN IN WHOLE OR IN PART WITHOUT THE WRITTEN PERMISSION OF FARLEY, SMITH & DENIS SURVEYING LTD.