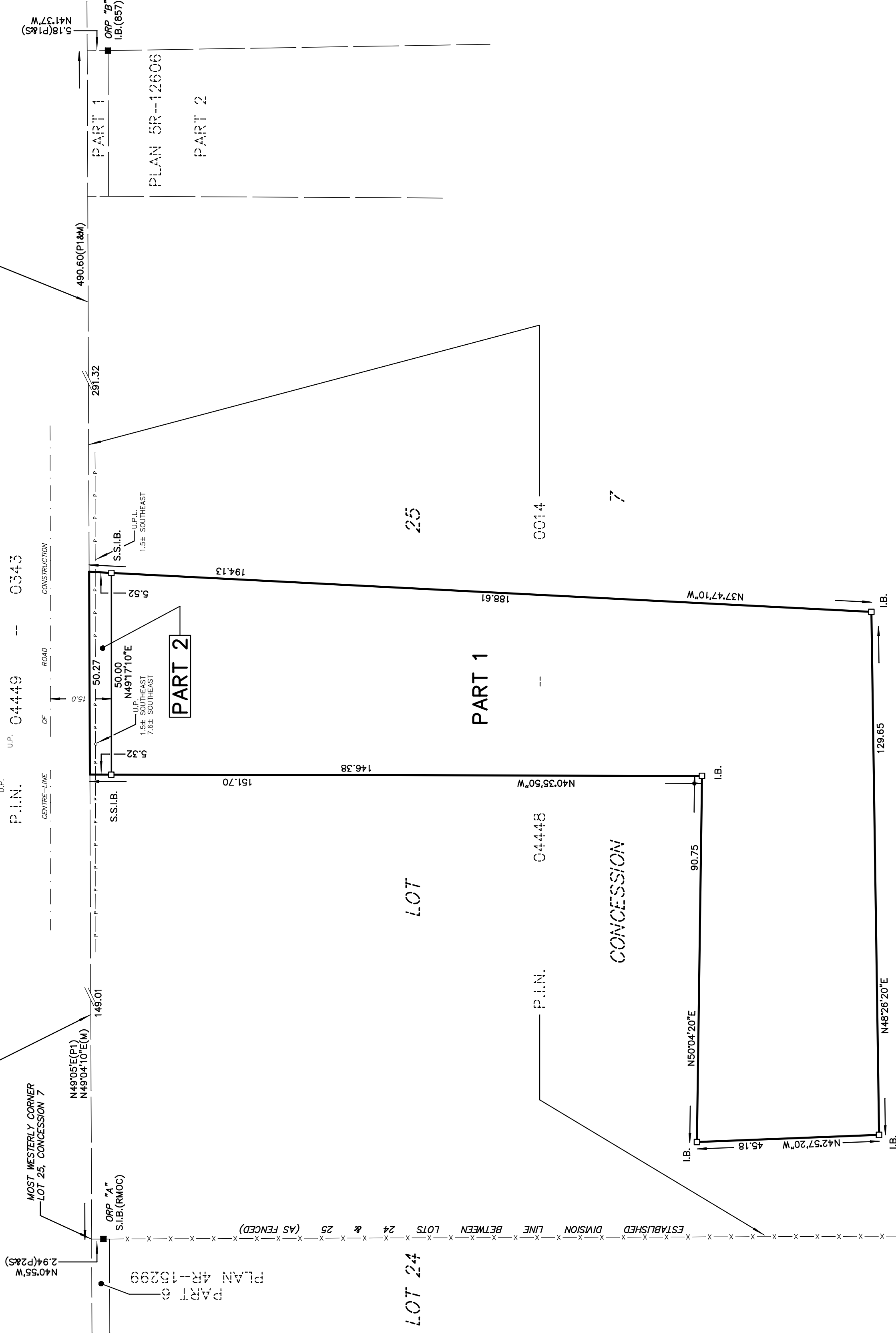


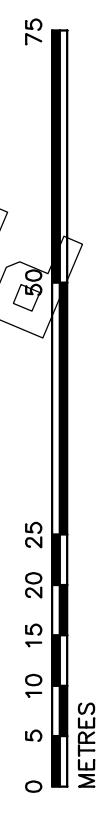
SCHEDULE			
PART	LOT	CON.	P.I.N.
1	PART OF 25	7	PART OF 04448-0014
2			

ROAD ALLOWANCE BETWEEN CONCESSIONS 7 AND 8 (FOLLOWFIELD ROAD)



PLAN 4R-  
RECEIVED AND DEPOSITED  
DATE  
I REQUIRE THIS PLAN TO BE DEPOSITED UNDER THE LAND TITLES ACT.  
DATE  
J.P. SHIPMAN  
REPRESENTATIVE FOR THE LAND REGISTRAR FOR THE LAND TITLES DIVISION OF OTTAWA-CARLETON (No. 4)

PLAN OF SURVEY OF  
PART OF LOT 25  
CONCESSION 7  
GEOGRAPHIC TOWNSHIP OF GOULBOURN  
CITY OF OTTAWA  
SCALE 1:750



**METRIC**

DISTANCES AND COORDINATES SHOWN ON THIS PLAN ARE IN METRES AND CAN BE CONVERTED TO FEET BY DIVIDING BY 0.3048

**NOTES**

BEARINGS SHOWN ON THIS PLAN ARE GRID BEARINGS, AND ARE DERIVED FROM LEICA SMART-NET REAL TIME NETWORK GPS OBSERVATIONS ON REFERENCE 'A' AND 'B' SHOWN HEREON, AND ARE REFERENCED TO SPECIFIED CONTROL POINTS 01919791338 AND 01919871649, MTM ZONE 9, (7650 WEST LONGITUDE), NAD 83 (ORIGINAL).

DISTANCES SHOWN ON THIS PLAN ARE HORIZONTAL GROUND DISTANCES AND CAN BE CONVERTED TO GRID DISTANCES BY MULTIPLYING BY THE COMBINED SCALE FACTOR OF 0.999914

- S.I.B. DENOTES 0.025 SQ., 1.2 LONG, STANDARD IRON BAR
- S.S.I.B. DENOTES 0.025 SQ., 0.6 LONG, SHORT STANDARD IRON BAR
- I.B. DENOTES 0.016 SQ., 0.6 LONG, IRON BAR
- R.I.B. DENOTES ROUND IRON BAR
- DENOTES SURVEY MONUMENT FOUND
- DENOTES SURVEY MONUMENT PLANTED
- WIT. DENOTES WITNESS
- 857 DENOTES FAIRHALL, MOFFATT & WOODLAND LTD.
- RMOC DENOTES REGIONAL MUNICIPALITY OF OTTAWA-CARLETON
- P1 DENOTES PLAN 5R-12606
- P2 DENOTES PLAN 4R-15299
- M DENOTES MEASURED
- S DENOTES SET
- U.P. DENOTES UTILITIES POLE
- U.P.L. DENOTES UTILITIES POLE LINE

POINT IDENTIFICATION	NORTHING	EASTING
ORP A	5010603.24	353552.24
ORP B	5010923.00	353924.41

OBSERVED REFERENCE POINTS (ORP): MTM ZONE 9, NAD 83 (ORIGINAL)  
COORDINATES SHOWN TO RURAL ACCURACY IN ACCORDANCE WITH O. REG 216/10, SECTIONS 14, AND 31 TO 35 (BOTH INCLUSIVE).  
COORDINATES CANNOT, IN THEMSELVES, BE USED TO RE-ESTABLISH CORNERS OR BOUNDARIES SHOWN ON THIS PLAN

**SURVEYOR'S CERTIFICATE**

I CERTIFY THAT:  
(1) THIS SURVEY AND PLAN ARE CORRECT AND IN ACCORDANCE WITH THE SURVEYS ACT, THE SURVEYORS ACT AND THE LAND TITLES ACT AND THE REGULATIONS MADE UNDER THEM;  
(2) THE SURVEY WAS COMPLETED ON THE 3rd DAY OF SEPTEMBER, 2019.

OCTOBER 18, 2019  
DATE  
J.P. SHIPMAN  
ONTARIO LAND SURVEYOR