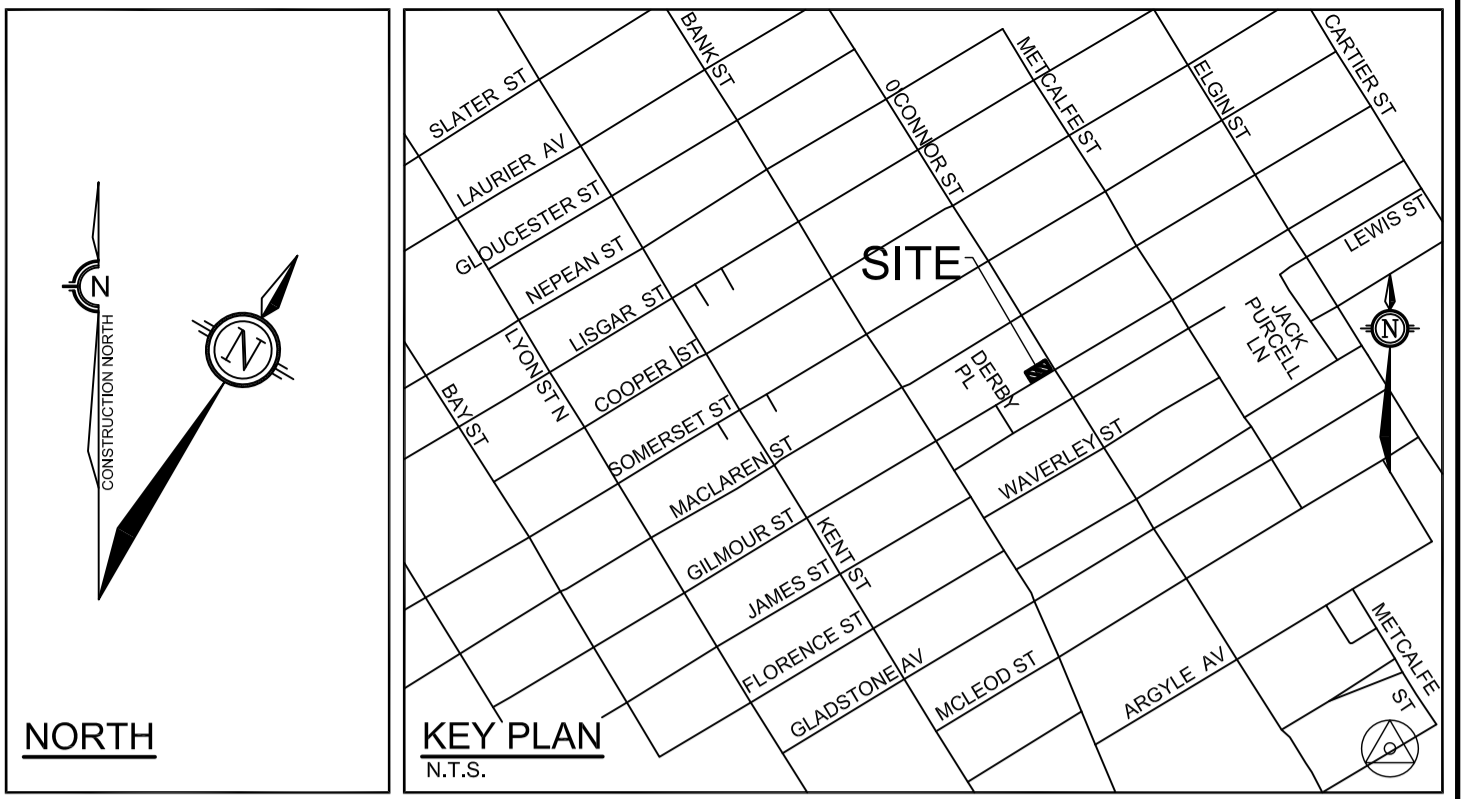
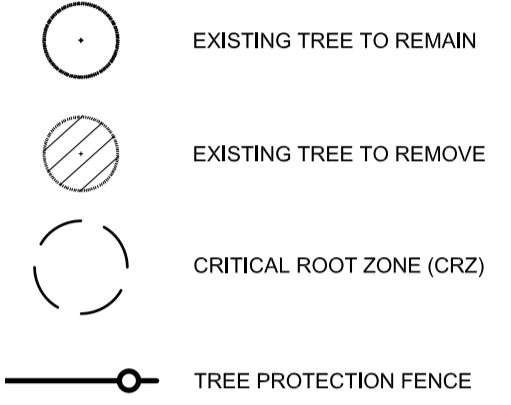


No.	Botanical Name	Common Name	DBH (m)	CRZ (m)	Condition	Remarks	Recomm.
1	Malus sp.	Crabapple	0.35	3.50	G		Remove
2	Malus sp.	Crabapple	0.30	3.00	F	extensive dead branches on one side	Remove
3	Malus sp.	Crabapple	0.30	3.00	G	yellowing leaves	PROTECT
4	Malus sp.	Crabapple	0.30	3.00	G		PROTECT
5	Acer platanoides	Norway Maple	0.40	4.00	G		PROTECT
6	Acer negundo	Manitoba Maple	0.30	3.00	G		PROTECT
7	Acer negundo	Manitoba Maple	0.30	3.00	P	Mostly dead branches	PROTECT
8	Acer negundo	Manitoba Maple	0.10	1.00	G		PROTECT
9	Acer negundo	Manitoba Maple	0.30	3.00	G		Remove
10	Acer negundo	Manitoba Maple	0.25	2.50	G		PROTECT
11	Fraxinus sp.	Ash	0.15	1.50	VP	Dead	Remove
12	Fraxinus sp.	Ash	0.15	1.50	VP	Dead	Remove
13	Fraxinus sp.	Ash	0.15	1.50	VP	Dead	Remove
14	Acer negundo	Manitoba Maple	0.40	4.00	G		Remove
15	Acer negundo	Manitoba Maple	0.30	3.00	VP	Dead	PROTECT
16	Acer negundo	Manitoba Maple	0.30	3.00	G		PROTECT
17	Acer negundo	Manitoba Maple	0.35	3.50	G		PROTECT
18	Tilia americana	Basswood	0.45	4.50	G		Remove

NOTE: TREE LOCATIONS APPROXIMATE

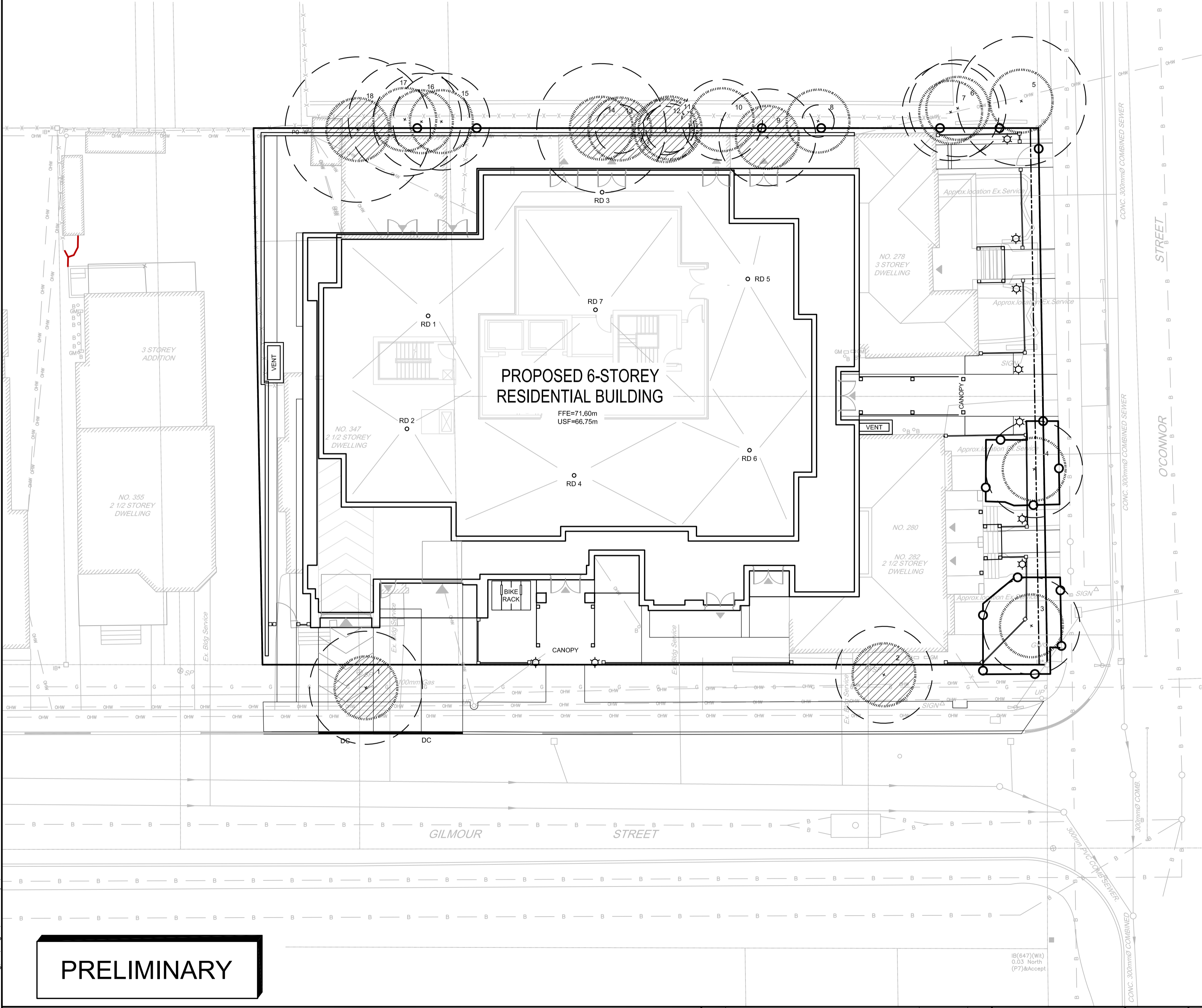


LANDSCAPE LEGEND:

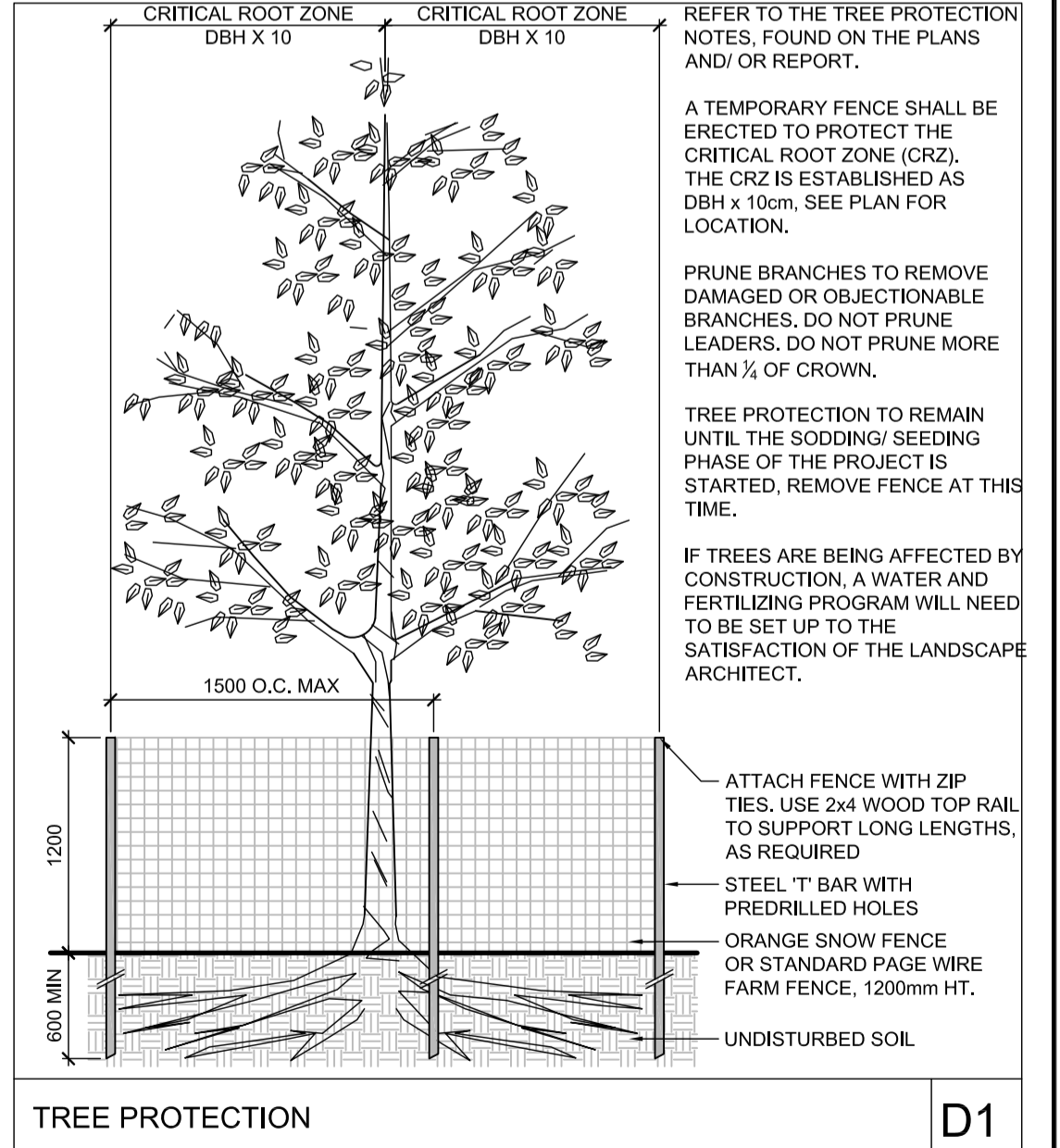


TREE PROTECTION NOTES

- The following protection measures must be implemented for retained trees, both on site and on adjacent sites, prior to any tree removal or site works and maintained for the duration of construction on site:
- Under the guidance of a Landscape Architect or Certified Arborist, erect a fence at the critical root zone (CRZ) of trees where the CRZ is established as being 10 centimetres from the trunk of a tree for every centimetre of trunk diameter at breast height. The CRZ is calculated as DBH x 10cm. Refer to the Tree Protection Fence detail. See plan for fence location.
  - When trees to be removed overlap with the CRZ of trees to be preserved, cut roots at the edge of the CRZ and grind down stumps after tree removals, do not pull out stumps. Ensure there is not root pulling or disturbance of the ground within the CRZ.
  - If roots must be cut, roots 20mm or larger should be cut at right angles with clean, sharp horticultural tools without tearing, crushing, or pulling. Refer to City of Ottawa Specification S.P. F-8011 Tree Protection, Excavation of Root Zone.
  - Hand work only where required within the CRZ; absolutely no machinery permitted.
  - Do not place any material or equipment within the CRZ of any tree.
  - Do not attach any signs, notices or posters to any tree.
  - Do not disturb, raise or lower the existing grade within the CRZ without approval.
  - Only tunnel or bore when digging within the CRZ of a tree.
  - Do not damage the root system, trunk, or branches or any tree.
  - Ensure that exhaust fumes from all equipment are directed away from any tree canopy.



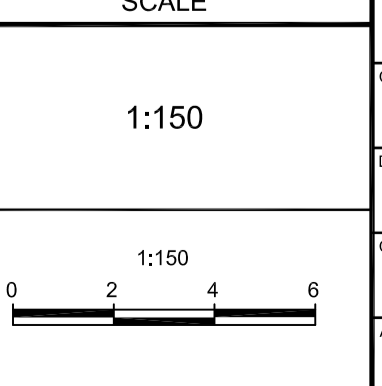
**PRELIMINARY**



NOTE: THE POSITION OF ALL POLE LINES, CONDUITS, WATERMANS, SEWERS AND OTHER UNDERGROUND AND OVERGROUND UTILITIES AND STRUCTURES IS NOT NECESSARILY SHOWN ON THE CONTRACT DRAWINGS, AND WHERE SHOWN, THE ACCURACY OF THE POSITION OF SUCH UTILITIES AND STRUCTURES IS NOT GUARANTEED. BEFORE STARTING WORK, DETERMINE THE EXACT LOCATION OF ALL SUCH UTILITIES AND STRUCTURES AND ASSUME ALL LIABILITY FOR DAMAGE TO THEM.

OWNER INFORMATION  
 POLO IV PROPERTIES INC.  
 2120 WOODCREST ROAD,  
 OTTAWA, ONTARIO, K1H 6H8  
 c/o AK GLOBAL MANAGEMENT INC.  
 TONY KAZARIAN  
 PHONE: (613) 592-5960  
 tony.k@akmanagement.com

No.	REVISION	DATE	BY
2.	ISSUED FOR SITE PLAN APPROVAL	AUG 9/19	RGJ
1.	ISSUED FOR COORDINATION	AUG 1/19	RGJ



DESIGN	KEYW
CHECKED	RGJ
DRAWN	KEW
CHECKED	RGJ
APPROVED	RGJ

**FOR REVIEW ONLY**

**NOVATECH**  
 Engineers, Planners & Landscape Architects  
 Suite 200, 240 Michael Cowpland Drive  
 Ottawa, Ontario, Canada K2M 1P6  
 Telephone: (613) 254-9643  
 Facsimile: (613) 254-5867  
 Website: www.novatech-eng.com

LOCATION  
 CITY OF OTTAWA  
 280 O'CONNOR STREET

DRAWING NAME  
**TREE CONSERVATION REPORT**

PROJECT No. 118074-00  
 REV # 2  
 DRAWING No. 118074-TCR

M:\2018\118074\CAD\Landscape\1-Plan\118074-TCR.dwg, L1, Aug 14, 2019 - 2:46pm, kvanson