

Heritage Hills Gas Station and Retail Plaza - Stationary Noise Impact Study Report

Trimterra Development Corporation

Project Number: 60546152

April 8, 2019

Statement of Qualifications and Limitations

The attached Report (the "Report") has been prepared by AECOM Canada Ltd. ("AECOM") for the benefit of the Client ("Client") in accordance with the agreement between AECOM and Client, including the scope of work detailed therein (the "Agreement").

The information, data, recommendations and conclusions contained in the Report (collectively, the "Information"):

- is subject to the scope, schedule, and other constraints and limitations in the Agreement and the qualifications contained in the Report (the "Limitations");
- represents AECOM's professional judgement in light of the Limitations and industry standards for the preparation of similar reports;
- may be based on information provided to AECOM which has not been independently verified;
- has not been updated since the date of issuance of the Report and its accuracy is limited to the time period and circumstances in which it was collected, processed, made or issued;
- must be read as a whole and sections thereof should not be read out of such context;
- was prepared for the specific purposes described in the Report and the Agreement; and
- in the case of subsurface, environmental or geotechnical conditions, may be based on limited testing and on the assumption that such conditions are uniform and not variable either geographically or over time.

AECOM shall be entitled to rely upon the accuracy and completeness of information that was provided to it and has no obligation to update such information. AECOM accepts no responsibility for any events or circumstances that may have occurred since the date on which the Report was prepared and, in the case of subsurface, environmental or geotechnical conditions, is not responsible for any variability in such conditions, geographically or over time.

AECOM agrees that the Report represents its professional judgement as described above and that the Information has been prepared for the specific purpose and use described in the Report and the Agreement, but AECOM makes no other representations, or any guarantees or warranties whatsoever, whether express or implied, with respect to the Report, the Information or any part thereof.

Without in any way limiting the generality of the foregoing, any estimates or opinions regarding probable construction costs or construction schedule provided by AECOM represent AECOM's professional judgement in light of its experience and the knowledge and information available to it at the time of preparation. Since AECOM has no control over market or economic conditions, prices for construction labour, equipment or materials or bidding procedures, AECOM, its directors, officers and employees are not able to, nor do they, make any representations, warranties or guarantees whatsoever, whether express or implied, with respect to such estimates or opinions, or their variance from actual construction costs or schedules, and accept no responsibility for any loss or damage arising therefrom or in any way related thereto. Persons relying on such estimates or opinions do so at their own risk.

Except (1) as agreed to in writing by AECOM and Client; (2) as required by-law; or (3) to the extent used by governmental reviewing agencies for the purpose of obtaining permits or approvals, the Report and the Information may be used and relied upon only by Client.





AECOM accepts no responsibility, and denies any liability whatsoever, to parties other than Client who may obtain access to the Report or the Information for any injury, loss or damage suffered by such parties arising from their use of, reliance upon, or decisions or actions based on the Report or any of the Information ("improper use of the Report"), except to the extent those parties have obtained the prior written consent of AECOM to use and rely upon the Report and the Information. Any injury, loss or damages arising from improper use of the Report shall be borne by the party making such use.

This Statement of Qualifications and Limitations is attached to and forms part of the Report and any use of the Report is subject to the terms hereof.

AECOM: 2015-04-13

© 2009-2015 AECOM Canada Ltd. All Rights Reserved.

Quality information

Prepared by	Checked by	Verified by	Approved by
			
Brian Bulnes, P. Eng. Acoustic Engineer	Atif Bokhari, P.Eng. Acoustic Engineer	Alan Oldfield, MEng, CEng(UK), P.Eng. Manager, Senior Acoustic Engineer	Alan Oldfield, MEng, CEng(UK), P.Eng. Manager, Senior Acoustic Engineer

Revision History

Revision	Revision date	Details	Name	Position
0	14/02/2019	Initial Issue	Brian Bulnes	Acoustic Engineer
1	08/04/2019	Revised per City comments	Brian Bulnes	Acoustic Engineer

Distribution List

# Hard Copies	PDF Required	Association / Company Name
	X	Trimterra Development Corporation

Executive Summary

AECOM Canada Limited (AECOM) has been retained by the Trimterra Development Corporation to prepare a Noise Impact Study for the stationary noise sources within the Heritage Hills Plaza (the Plaza) proposed to be located at 471 Terry Fox Drive, in Ottawa, Ontario, Canada. The Plaza will contain two retail buildings, and a gas station with an automated car wash. The purpose of this report is to evaluate the compliance status of the Plaza with the *City of Ottawa Environmental Noise Control Guidelines*, *City of Ottawa Noise By-law 2017-255*, and *Ministry of the Environment, Conservation and Parks (MECP) NPC-300* noise guideline.

With the noise barrier and delivery and car wash operation restrictions described in Section 2 implemented, the results of the assessment indicate that the noise levels at the assessed points of reception, due to future Plaza operations, are expected to comply with the applicable sound level limits.

Table of Contents

Executive Summary	4
1. Introduction	6
2. Site Description	6
3. Noise Source Summary	6
4. Points of Reception	7
5. Assessment Criteria.....	8
6. Impact Assessment	10
7. Conclusions	12
8. References.....	13
Figures	14
Tables	21

Figures

Figure 1: Site Plan.....	15
Figure 2: Land Use Plan.....	17
Figure 3: Noise Source Locations	19
Figure 4: Point of Reception Locations.....	20

Tables

Table 1: Assessed Points of Reception.....	7
Table 2: Minimum MECP NPC-300 Sound Level Limits for Class 2 Areas.....	8
Table 3: Objective Sound Level Limits	9
Table 4: Acoustic Assessment Summary Table	11
Table 5: Noise Source Summary	21
Table 6: Noise Impact Table – Plane of Window Points of Reception	23
Table 7: Noise Impact Table – Outdoor Points of Reception	24

Appendices

Appendix A: Noise Terminology
Appendix B: Relevant Drawings and Manufacturer Sound Level Data
Appendix C: Ambient Monitoring Data
Appendix D: Noise Contours and Sound Power level Calculations
Appendix E: Instrumentation

1. Introduction

AECOM Canada Limited (AECOM) has been retained by the Trimterra Development Corporation to prepare a Noise Impact Study for stationary noise sources within the Heritage Hills Plaza (the Plaza) proposed to be located at 471 Terry Fox Drive, in Ottawa, Ontario, Canada. The Plaza will contain two retail buildings, and a gas station with an automated car wash.

The purpose of this report is to evaluate the compliance status of the Plaza with the *City of Ottawa Environmental Noise Control Guidelines*, *City of Ottawa Noise By-law 2017-255*, and *Ministry of the Environment, Conservation and Parks (MECP) NPC-300* noise guideline. Appendix A presents a glossary of relevant acoustic terms used in this report.

2. Site Description

The Plaza is planned to be located at 471 Terry Fox Drive, on the northwest corner of the Terry Fox Drive and Kanata Avenue intersection, in Ottawa, Ontario, Canada. The areas immediately surrounding the Plaza are zoned for residential and outdoor recreational use.

The Plaza will contain a Shell gas station facility with an automated car wash, parking lot, and two retail buildings. Example uses for these buildings (per zoning allowances) can include but are not limited to: restaurants, offices, personal services, convenience stores, retail stores, or banks.

The site is expected to limit refrigerated truck deliveries to only during the day and evening periods (7:00AM – 11:00PM) as required per By-law 2017-255, and a 5.5 metre high noise barrier will be installed around the parking space where a truck will idle. The location of the parking space and noise barrier details are presented in Figures 1 and 3.

The Plaza facilities are planned to operate 24 hours a day, 7 days a week. The exception to this is the car wash, which will not operate during the night time hours (11:00PM – 7:00AM). Figure 1 presents a site plan of the Plaza, and Figure 2 presents a relevant land use plan of the area.

3. Noise Source Summary

The significant noise sources expected at the Plaza include the following:

- Car wash dryer fan noise (with silencer kits installed);
- Roof top units for retail buildings 1 and 2; and
- Refrigerated/non-refrigerated truck idling.

Noise source emissions were established using manufacturer sound level data, published data from acoustic textbook resources, or previous project data. Sound level details are provided in Table 5 (Tables section), and Appendices B and D.

It should be noted that while NPC-300 explicitly excludes car wash noise from stationary source assessments, both the City of Ottawa Environmental Noise Control Guidelines and By-law 2017-255 require car wash noise to be considered. The significant noise associated with the car wash occurs during the drying of the vehicle, where fan noise will emit through the south exit door as the car exits. The entrance doors are closed during the drying process.

Noise sources associated with gas stations are considered exempt from both City of Ottawa and NPC-300 guidelines, and have been excluded from the assessment. In addition, NPC-300 (and by extension, City of Ottawa Noise Control Guidelines) excludes the occasional movement of delivery vehicles to commercial facilities such as convenience stores, restaurants, or similar facilities. As such, only the truck idling and associated refrigerated unit noise was assessed within the assigned parking area for delivery trucks.

4. Points of Reception

Residences to the north, west, and east of the Plaza have been identified as being representative of the worst case noise sensitive points of reception (PORs) near the Plaza. The worst case PORs were determined by creating noise contour plots and identifying the residences that received the highest noise contributions from the Plaza.

As per MECP Publication NPC-300, Plane of Window and Outdoor (e.g. backyard) Points of Reception (PORs) were assessed as follows:

- Plane of Window – A point in space corresponding with the centre location of a first storey window at a minimum height of 1.5 metres above grade; a second storey window at a minimum height of 4.5 metres above grade, or a third story window at a minimum height of 7.5 metres above grade.
- Outdoor – A point in space within 30 metres of the dwelling, at a height of 1.5 metres above grade.

Figure 4 presents the POR locations relative to the Plaza. Table 1 describes each assessed location.

Table 1: Assessed Points of Reception

Point of Reception ID	Distance to Nearest Plaza Structure (m)	Point of Reception Location	Point of Reception Description	Location
R01_PoW	30	Plane of Window	Third storey window of detached home, at a height of 7.5 metres.	South of Ingersoll Crescent, northeast of the Plaza.
R01_Out	23	Outdoor	Rear property line of dwelling, at a height of 1.5 metres.	
R02_PoW	58	Plane of Window	Third storey window of detached home, at a height of 7.5 metres.	South of Ingersoll Crescent, northeast of the Plaza.
R02_Out	49	Outdoor	Rear property line of dwelling, at a height of 1.5 metres.	
R03_PoW	25	Plane of Window	Second storey window of detached home, at a height of 4.5 metres.	East of Tillsonburg Street, near the northwest corner of the Plaza property line.
R03_Out	27	Outdoor	Side property line of dwelling, at a height of 1.5 metres.	
R04_PoW	44	Plane of Window	Third storey window of detached home, at a height of 7.5 metres.	West of Tillsonburg Street, west of the Plaza.

Point of Reception ID	Distance to Nearest Plaza Structure (m)	Point of Reception Location	Point of Reception Description	Location
R04_Out	34	Outdoor	Corner property line of dwelling, at a height of 1.5 metres.	
R05_PoW	201	Plane of Window	Second storey window of detached home, at a height of 4.5 metres.	West of Insmill Crescent, east of the Plaza.
R05_Out	183	Outdoor	Rear property line of dwelling, at a height of 1.5 metres.	
R06_PoW	56	Plane of Window	Third storey window of detached home, at a height of 7.5 metres.	South of Ingersoll Crescent, northeast of the Plaza.
R06_Out	48	Outdoor	Rear property line of dwelling, at a height of 1.5 metres.	

5. Assessment Criteria

The noise from the Plaza is generated by stationary sources (i.e. a source of sound which normally operates within the property lines of a facility) as defined in both NPC-300 and the City of Ottawa Noise Control Guidelines. The subject area is defined as Class 2 (Urban), as per both applicable criteria.

The City of Ottawa guidelines adopt NPC-300's minimum sound level limits (labelled *Exclusion Limit* within NPC-300) for the noise emissions at plane of window and outdoor points of reception in Class 2 areas. These limits are summarized in Table 2.

Table 2: Minimum MECP NPC-300 Sound Level Limits for Class 2 Areas

Time Period	Point of Reception Location	Stationary Sources Minimum Sound Level Limit (One Hour Leq, dBA)
Daytime (7AM to 7PM)	Plane of Window	50
Evening (7PM to 11PM)	Plane of Window	50
Night time (11PM to 7AM)	Plane of Window	45
Daytime (7AM to 7PM)	Outdoor	50
Evening (7PM to 11PM)	Outdoor	45
Night time (11PM to 7AM)	Outdoor	Not Applicable

The sound level limit objective at each point of reception is determined in accordance with NPC-300 and is the greater of either:

- The minimum background sound level that occurs or is likely to occur during operation of the source under assessment; or
- The applicable minimum sound level limit, as indicated in Table 2 (Table B-1 within Publication NPC-300).

This assessment implemented lowest measured background noise levels as the objective sound level limits. Noise monitoring was conducted on Tillsonburg Street in order to assess minimum hourly equivalent levels ($L_{eq,1hr}$) at a location representative of the nearest sensitive receptors. Periods with inclement weather (precipitation or wind speeds greater than 20 km/h) were excluded from analysis. As the monitoring location was closer to Terry Fox Drive than the nearby residences, the results were adjusted to estimate the background levels at the dwellings further away. The monitoring locations are presented in Appendix C.

The minimum measured hourly L_{eq} for day and evening periods were used as the objective sound level limits. As the minimum measured hourly L_{eq} for night time was slightly less than the NPC-300 minimum sound level limit for night time periods, the NPC-300 sound level limit has been used as the objective night time sound level limit. Resulting sound level limits for each receptor are presented in Table 3. Detailed background noise measurement data can be found in Appendix C.

Table 3: Objective Sound Level Limits

Receptor ID	MOECC Designation	Time Period	Receptor Type	Stationary Sources Sound Level Limit (One Hour L_{eq} , dBA)
R01_PoW	Class 2	Daytime (7AM to 7PM)	Plane of Window	59
		Evening (7PM to 11PM)	Plane of Window	55
		Night time (11PM to 7AM)	Plane of Window	45
R01_Out	Class 2	Daytime (7AM to 7PM)	Outdoor	59
		Evening (7PM to 11PM)	Outdoor	55
R02_PoW	Class 2	Daytime (7AM to 7PM)	Plane of Window	59
		Evening (7PM to 11PM)	Plane of Window	55
		Night time (11PM to 7AM)	Plane of Window	45
R02_Out	Class 2	Daytime (7AM to 7PM)	Outdoor	59
		Evening (7PM to 11PM)	Outdoor	55
R03_PoW	Class 2	Daytime (7AM to 7PM)	Plane of Window	59
		Evening (7PM to 11PM)	Plane of Window	55
		Night time (11PM to 7AM)	Plane of Window	45
R03_Out	Class 2	Daytime (7AM to 7PM)	Outdoor	59
		Evening (7PM to 11PM)	Outdoor	55
R04_PoW	Class 2	Daytime (7AM to 7PM)	Plane of Window	59
		Evening (7PM to 11PM)	Plane of Window	55
		Night time (11PM to 7AM)	Plane of Window	45
R04_Out	Class 2	Daytime (7AM to 7PM)	Outdoor	59
		Evening (7PM to 11PM)	Outdoor	55
R05_PoW	Class 2	Daytime (7AM to 7PM)	Plane of Window	59
		Evening (7PM to 11PM)	Plane of Window	55
		Night time (11PM to 7AM)	Plane of Window	45
R05_Out	Class 2	Daytime (7AM to 7PM)	Outdoor	59
		Evening (7PM to 11PM)	Outdoor	55

Receptor ID	MOECC Designation	Time Period	Receptor Type	Stationary Sources Sound Level Limit (One Hour L_{eq} , dBA)
R06_PoW	Class 2	Daytime (7AM to 7PM)	Plane of Window	59
		Evening (7PM to 11PM)	Plane of Window	55
		Night time (11PM to 7AM)	Plane of Window	45
R06_Out	Class 2	Daytime (7AM to 7PM)	Outdoor	59
		Evening (7PM to 11PM)	Outdoor	55

City of Ottawa Noise By-law No. 2017-255

Ottawa Noise By-Law 2017-255 provides noise criteria that specifically applies to car wash operations. Relevant by-law sections are replicated below:

6. (1) *No person shall use or operate or cause to be used or operated any exhaust fan, exhaust system, intake fan, generators, dryer in a commercial car wash or similar device which includes combustion exhaust of a high efficiency furnace, the noise from which has a level greater than 50 dB(A) when measured at the point of reception.*

However, similar to NPC-300, the Ottawa by-law allows for background noise levels to be taken into consideration:

25. (2) *No person shall use or operate or cause to be used or operated any device, vehicle or equipment, the noise from which has a level greater than 5 dB(A) above ambient noise levels, provided that the ambient noise levels are greater than the specified maximum level for the device, vehicle or equipment in question.*

Although the by-law allows for sound levels of 5 dB(A) above ambient levels at a given point of reception, NPC-300/City of Ottawa Guidelines are more stringent and have been applied as the primary criteria within this report.

6. Impact Assessment

Sound power level data were used as inputs to the noise impact model. Noise impacts at the identified points of reception were predicted using the ISO 9613-2 (Reference 6) noise prediction algorithm, implemented in CadnaA noise prediction software. The resulting noise impacts at each assessed POR were then evaluated against the sound level limit objectives described in Section 5.

As mentioned in Section 3, refrigerated truck idling and car wash exit blowers were only modelled for day time and evening usage. Car wash durations have been estimated using similar Shell car wash footage, which shows that a single wash/dry cycle takes roughly 6 minutes and 30 seconds. During this time, the blower/exit doors are only open for approximately 2 minutes. As such, blower operations have been conservatively modelled as being active for 1/3rd (20 minutes) of the worst case hour (assumes constant traffic flow).

Ground elevation data for the area was implemented into the model using provided elevation drawings, which can be found in Appendix B.

The noise emissions produced by the Plaza operations were assessed. Table 4 presents noise impacts at each of the identified PORs from worst case Plaza operations.

Table 4: Acoustic Assessment Summary Table

Point of Reception ID	Point of Reception Location	Time Period	Predicted One Hour L_{eq} Noise Level (dBA)	Verified by Acoustic Audit (Yes/No)	One Hour L_{eq} Sound Level Basis of Assessment (dBA)	Compliance with Sound Level Limit (Yes/No)
R01_PoW	Plane of Window	Daytime	51	No	59	Yes
		Evening	51	No	55	Yes
		Night time	41	No	45	Yes
R01_Out	Outdoor	Daytime	51	No	59	Yes
		Evening	51	No	55	Yes
R02_PoW	Plane of Window	Daytime	52	No	59	Yes
		Evening	52	No	55	Yes
		Night time	43	No	45	Yes
R02_Out	Outdoor	Daytime	49	No	59	Yes
		Evening	49	No	55	Yes
R03_PoW	Plane of Window	Daytime	55	No	59	Yes
		Evening	55	No	55	Yes
		Night time	45	No	45	Yes
R03_Out	Outdoor	Daytime	53	No	59	Yes
		Evening	53	No	55	Yes
R04_PoW	Plane of Window	Daytime	47	No	59	Yes
		Evening	47	No	55	Yes
		Night time	41	No	45	Yes
R04_Out	Outdoor	Daytime	48	No	59	Yes
		Evening	48	No	55	Yes
R05_PoW	Plane of Window	Daytime	45	No	59	Yes
		Evening	45	No	55	Yes
		Night time	32	No	45	Yes
R05_Out	Outdoor	Daytime	47	No	59	Yes
		Evening	47	No	55	Yes
R06_PoW	Plane of Window	Daytime	52	No	59	Yes
		Evening	52	No	55	Yes
		Night time	43	No	45	Yes
R06_Out	Outdoor	Daytime	53	No	59	Yes
		Evening	53	No	55	Yes

Individual noise impacts from the modelled noise sources at each POR are presented in Table 6 and Table 7 (in the Tables section of this report). Sample noise modelling calculations are provided in Appendix D.

7. Conclusions

An acoustic assessment of the Heritage Hills Plaza has been completed. Noise levels were assessed against MECP NPC-300, City of Ottawa By-law 2017-255, and City of Ottawa Environmental Noise Control guidelines.

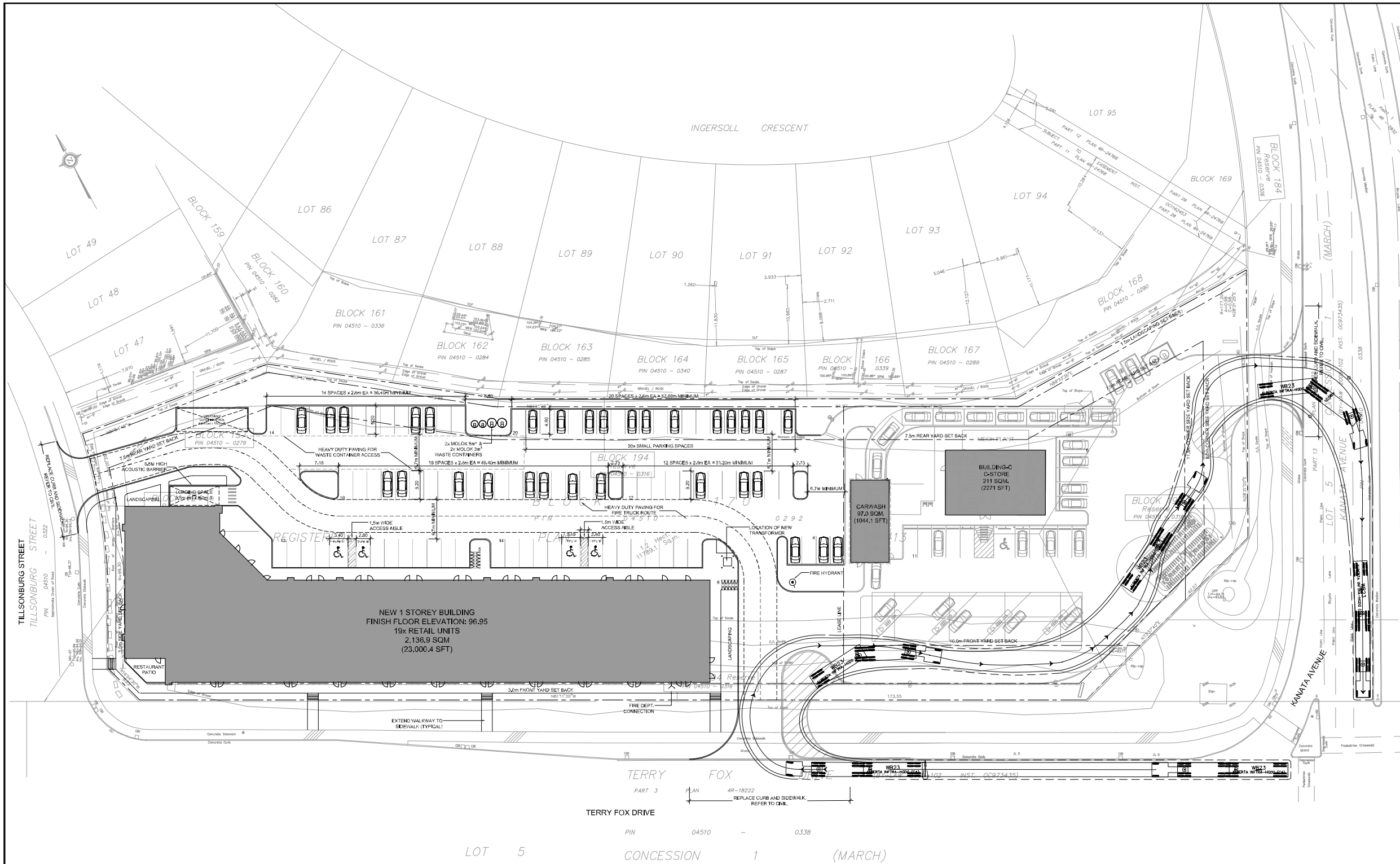
With the noise barrier and delivery and car wash operation restrictions described in Section 2 implemented, the results of the assessment indicate that the noise levels at the assessed points of reception, due to future Plaza operations, are expected to comply with the applicable sound level limits.

8. References

1. Ontario Ministry of the Environment, Conservation and Parks Noise Guideline Publication NPC-300: Stationary and Transportation Sources - Approval and Planning, August 2013.
2. City of Ottawa - Planning and Growth Management, Environmental Noise Control Guidelines, January 2016.
3. City of Ottawa – Noise By-law No. 2017-255, 2017.
4. International Organization for Standardization, ISO/R 1996-1971 (E), Assessment of Noise with Respect to Community Response, 1972.
5. Ontario Ministry of the Environment and Climate Change, Publication NPC-103: Procedures.
6. Ontario Ministry of the Environment and Climate Change, Publication NPC-104: Sound Level Adjustments.
7. Ontario Ministry of the Environment and Climate Change, Publication NPC-233: Information to be submitted for Approval of Stationary Sources of Sound, October 1995.
8. International Organization for Standardization, ISO 9613-2: Acoustics - Attenuation of Sound during Propagation Outdoors Part 2: General Method of Calculation, 1996.

Figures

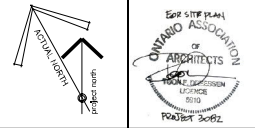
Figure 1: Site Plan



- GENERAL NOTES
1. DO NOT SCALE DRAWINGS; ONLY DIMENSIONED DIMENSIONS ARE TO BE USED. WHERE DOUBT EXISTS: FILE REQUEST FOR INTERPRETATION AND REQUEST CLARITY.
 2. IT IS THE RESPONSIBILITY OF THE GENERAL CONTRACTOR TO VERIFY DIMENSIONS ON SITE: REPORT DISCREPANCIES TO THE ARCHITECT PROMPTLY.
 3. GENERAL CONTRACTOR TO TAKE INTO ACCOUNT CONSTRUCTION TOLERANCES: GENERAL CONTRACTOR TO COORDINATE THE WORK OF DIFFERENT TRADES TO COMPLY WITH DESIGN INTENT.
 4. ALL WORK DESCRIBED IN THESE DRAWINGS AND SPECIFICATIONS ARE TO COMPLY WITH THE CURRENT EDITION OF THE ONTARIO BUILDING CODE (2012) OR NATIONAL BUILDING CODE (2010) INCLUDING MOST RECENT AMENDMENTS.
 5. DRAWINGS AND SPECIFICATIONS ARE COMPLEMENTARY AND ARE TO BE READ TOGETHER.

COPYRIGHT

THIS DRAWING IS AN INSTRUMENT OF SERVICE AND IS PROTECTED BY COPYRIGHT AND IS THE SOLE PROPERTY OF DREESSEN CARDINAL ARCHITECTS INC. COPIES, INCLUDING ELECTRONIC COPIES MAY ONLY BE USED FOR THE PURPOSE INTENDED FOR THE ENGINE PROJECT FOR WHICH THEY ARE ISSUED AND MAY NOT BE OFFERED FOR SALE OR TRANSFER WITHOUT THE EXPRESS WRITTEN PERMISSION OF THE ARCHITECT.



ISSUE RECORD:		
NO.	DESCRIPTION	DATE
01	FOR CIRCULATION	2019/01/11
02	FOR SITE PLAN APPLICATION	2019/02/01

CLIENT

7873794 CANADA INC
45 HURON DRIVE, 2ND FLOOR
NEPEAN, ONTARIO, K2E 7Y8
DENNIS LAUSON
TEL: 613-459-6072

CONSULTANTS

NOVATECH ENGINEERING CONSULTANTS LTD.
CIVIL ENGINEERS
240 MICHAEL COVPLAND DRIVE, SUITE 200
OTTAWA, ONTARIO, K2M 1P6
TEL: 613-284-9643



DREESSEN CARDINAL ARCHITECTS INC
A GROUP OF ARCHITECTS

1350 WELLINGTON ST. WEST OTTAWA ON K1Y 3C1
WWW.ARCHITECTSDCA.COM 613.725.2294

PROJECT TITLE

HERITAGE HILLS RETAIL
471 TERRY FOX DRIVE
OTTAWA, ONTARIO

DRAWING TITLE

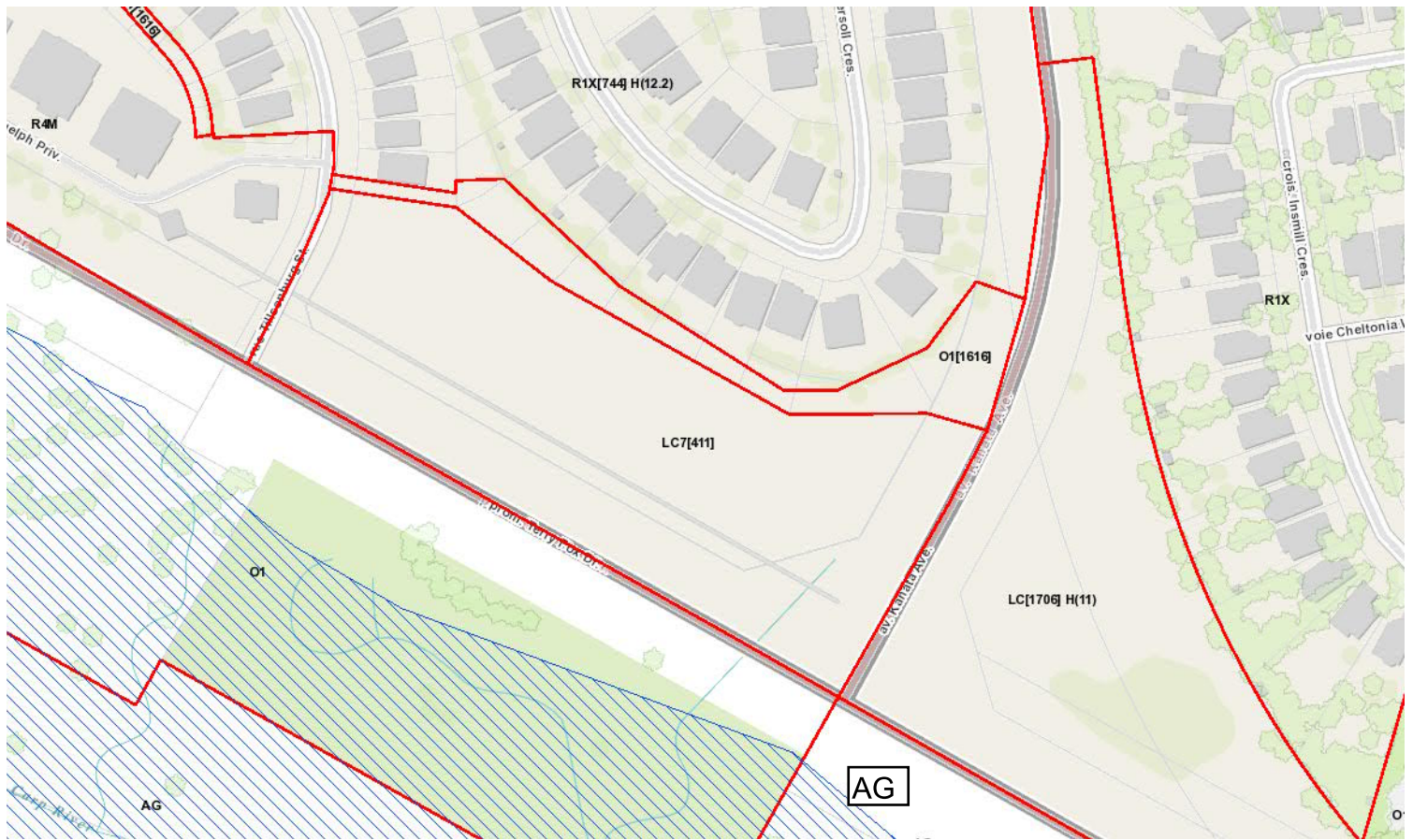
SITE PLAN

DATE	DRAWN	JOB NO.	DRAWING NO.
01/1/2019	DREB	3082	A100
SCALE	REVIEWED		
1:300	TD		

ARCHITECTURAL

<p>GENERAL NOTES:</p> <p>1. FOR PAVED SURFACES, GRADING, SITE SERVING, DRAINAGE EROSION AND SEDIMENT CONTROL, REFER TO CIVIL DRAWINGS.</p> <p>2. FOR PLANTING DETAILS, REFER TO LANDSCAPE DRAWINGS.</p> <p>SITE + BUILDING DATA</p> <p>SITE AREA: 11,795.48m² GROSS FLOOR AREA: 2,138.9 + 97 + 211 = 2,446.9m² BUILDING HEIGHT(S): 17.21m GROSS LEASABLE AREA: 2,084.5 + 94 + 34 = 2,222.5m²</p> <p>1. GROSS FLOOR AREA (CITY OF OTTAWA ZONING, BY-LAW DEFINITION) FOR THE PURPOSE OF DETERMINING PARKING REQUIREMENTS MEANS THE TOTAL AREA OF EACH FLOOR WHETHER LOCATED ABOVE, AT OR BELOW GRADE, MEASURED FROM THE INTERIORS OF OUTSIDE WALLS AND INCLUDING FLOOR AREA OCCUPIED BY INTERIOR WALLS AND FLOOR AREA CREATED BY BAY WINDOWS, BUT EXCLUDING:</p> <p>FLOOR AREA OCCUPIED BY SHARED MECHANICAL, SERVICE AND ELECTRICAL EQUIPMENT THAT SERVE THE BUILDING; (BY-LAW 2008-326)</p> <p>COMMON HALLWAYS, CORRIDORS, STAIRWELLS, ELEVATOR SHAFTS AND OTHER VOIDS, STEPS AND LANDINGS; (BY-LAW 2008-326) (BY-LAW 2017-302)</p> <p>BICYCLE PARKING: MOTOR VEHICLE PARKING OR LOADING FACILITIES.</p> <p>COMMON LAUNDRY, STORAGE AND WASHROOM FACILITIES THAT SERVE THE BUILDING OR TENANTS.</p> <p>COMMON STORAGE AREAS THAT ARE ACCESSORY TO THE PRINCIPAL USE OF THE BUILDING; (BY-LAW 2008-326)</p> <p>COMMON AMENITY AREA AND PLAY AREAS ACCESSORY TO A PRINCIPAL USE ON THE LOT; AND (BY-LAW 2008-326)</p> <p>LIVING QUARTERS FOR A CARETAKER OF THE BUILDING (SURFACE DE PLANCHER HORS OUVREUSE BRUTE).</p> <p>2. GROSS LEASABLE AREA: MEANS THE TOTAL FLOOR AREA DESIGNED FOR TENANT OCCUPANCY AND EXCLUSIVE USE, MEASURED FROM THE INTERIORS OF OUTSIDE WALLS EXCLUDING: FLOOR AREA OCCUPIED BY PARTY WALLS AND EXCLUDING:</p> <p>FLOOR AREA OCCUPIED BY SHARED MECHANICAL, SERVICE AND ELECTRICAL EQUIPMENT THAT SERVE THE BUILDING; (BY-LAW 2008-326)</p> <p>COMMON HALLWAYS, CORRIDORS, STAIRWELLS, ELEVATOR SHAFTS AND OTHER VOIDS, STEPS AND LANDINGS; (BY-LAW 2008-326)</p> <p>BICYCLE PARKING: MOTOR VEHICLE PARKING OR LOADING FACILITIES.</p> <p>COMMON LAUNDRY, STORAGE AND WASHROOM FACILITIES THAT SERVE THE BUILDING OR TENANTS.</p> <p>COMMON STORAGE AREAS THAT ARE ACCESSORY TO THE PRINCIPAL USE OF THE BUILDING; (BY-LAW 2008-326)</p> <p>COMMON AMENITY AREA AND PLAY AREAS ACCESSORY TO A PRINCIPAL USE ON THE LOT; AND (BY-LAW 2008-326) LIVING QUARTERS FOR A CARETAKER OF THE BUILDING.</p> <p>ABUTTING A RESIDENTIAL ZONE: 3.0m MINIMUM ABUTTING A STREET: 3.0m MINIMUM AROUND A PARKING LOT: 1.5m MINIMUM</p>		<p>ZONING: PART 10 - MIXED USE, COMMERCIAL ZONES (ZONELC7411) - LOCAL COMMERCIAL ZONE</p> <p>ZONING PROVISIONS: LC - (SECTION 190); LOT AREA: ADDITIONAL USES AND A CONVENIENCE STORE: 4,000m² OTHER NON-RESIDENTIAL USES: 1,800m²</p> <p>LOT WIDTH: 30m MINIMUM</p> <p>SETBACKS: FRONT YARD: 3m MINIMUM 10m MINIMUM - PUMP ISLANDS</p> <p>CORNER SIDE YARD: 11.5m MINIMUM - PUMP ISLANDS 8m MINIMUM - OTHER BUILDINGS AND STRUCTURES</p> <p>REAR YARD: 5m MINIMUM</p> <p>INTERIOR SIDE YARD: 3m MINIMUM</p> <p>BUILDING HEIGHT: 12.5m MAXIMUM</p> <p>FLOOR SPACE INDEX: NO MAXIMUM</p> <p>LANDSCAPING: ABUTTING A RESIDENTIAL ZONE: 3.0m MINIMUM ABUTTING A STREET: 3.0m MINIMUM AROUND A PARKING LOT: 1.5m MINIMUM</p>	<p>PARKING, QUEUING AND LOADING PROVISIONS:</p> <p>PARKING SECTION 101X MINIMUM REQUIRED: 3/4 PER 100m² OF GROSS FLOOR AREA = 63 PROVIDE 112 96 FOR RETAIL DEVELOPMENT 15 FOR CONVENIENCE STORE</p> <p>BICYCLE PARKING SECTION 111X MINIMUM REQUIRED: 1 PER 250m² OF GROSS FLOOR AREA = 10 PROVIDE 10</p> <p>LOADING SPACES SECTION 113X MINIMUM REQUIRED: 5, LC Zone, Services (1); PROVIDE 2</p> <p>PARKING FOR THE PHYSICALLY DISABLED OTTAWA ACCESSIBILITY DESIGN STANDARDS MINIMUM REQUIRED: 4, 2x TYPE A + 2x TYPE B PROVIDE 6, 3x TYPE A + 2x TYPE B</p>	<p>DRAWING LEGEND:</p> <p>--- PROPERTY LINE AND SETBACKS AS INDICATED</p> <p>--- FIRE ROUTE</p> <p>--- FIRE DEPARTMENT CONNECTION</p> <p>--- NEW FIRE HYDRANT</p> <p>--- MOUNTABLE CURB</p> <p>--- BICYCLE PARKING SPACE</p>	<p>ACCESSIBLE PARKING SCHEDULE:</p> <p>1500 3400 1500 2500</p> <p>TYPE 'A' TYPE 'B'</p> <p>ACCESSIBLE PARKING STALL SIZES IN ACCORDANCE WITH CITY OF OTTAWA DESIGN GUIDELINES.</p>		
---	--	--	---	--	--	--	--

Figure 2: Land Use Plan



LC - Local Commercial Zone
R1 - Residential First Density Zone
R4 - Residential Fourth Density Zone
O1 - Parks and Open Space Zone
AG - Agricultural Zone

Figure 3: Noise Source Locations

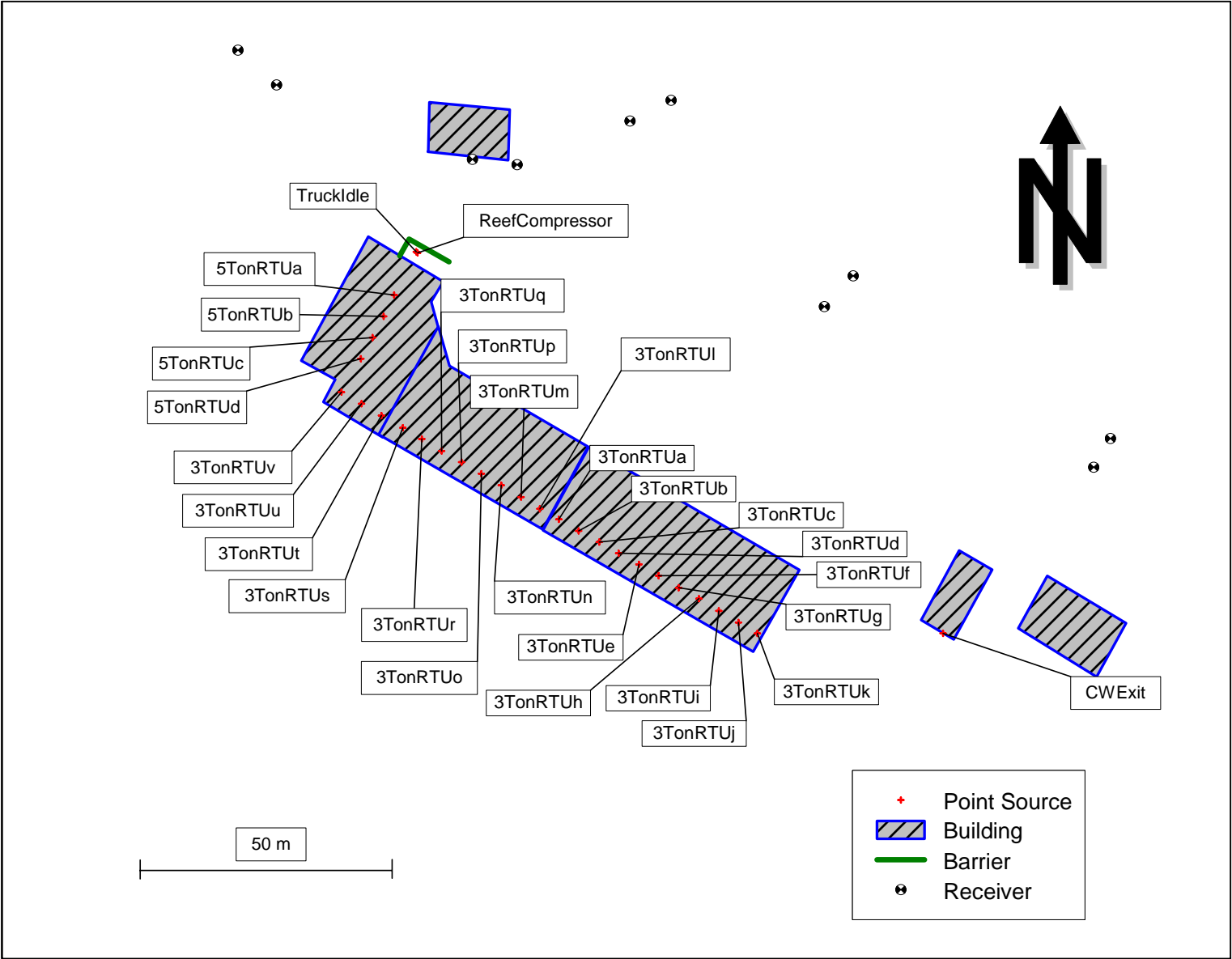
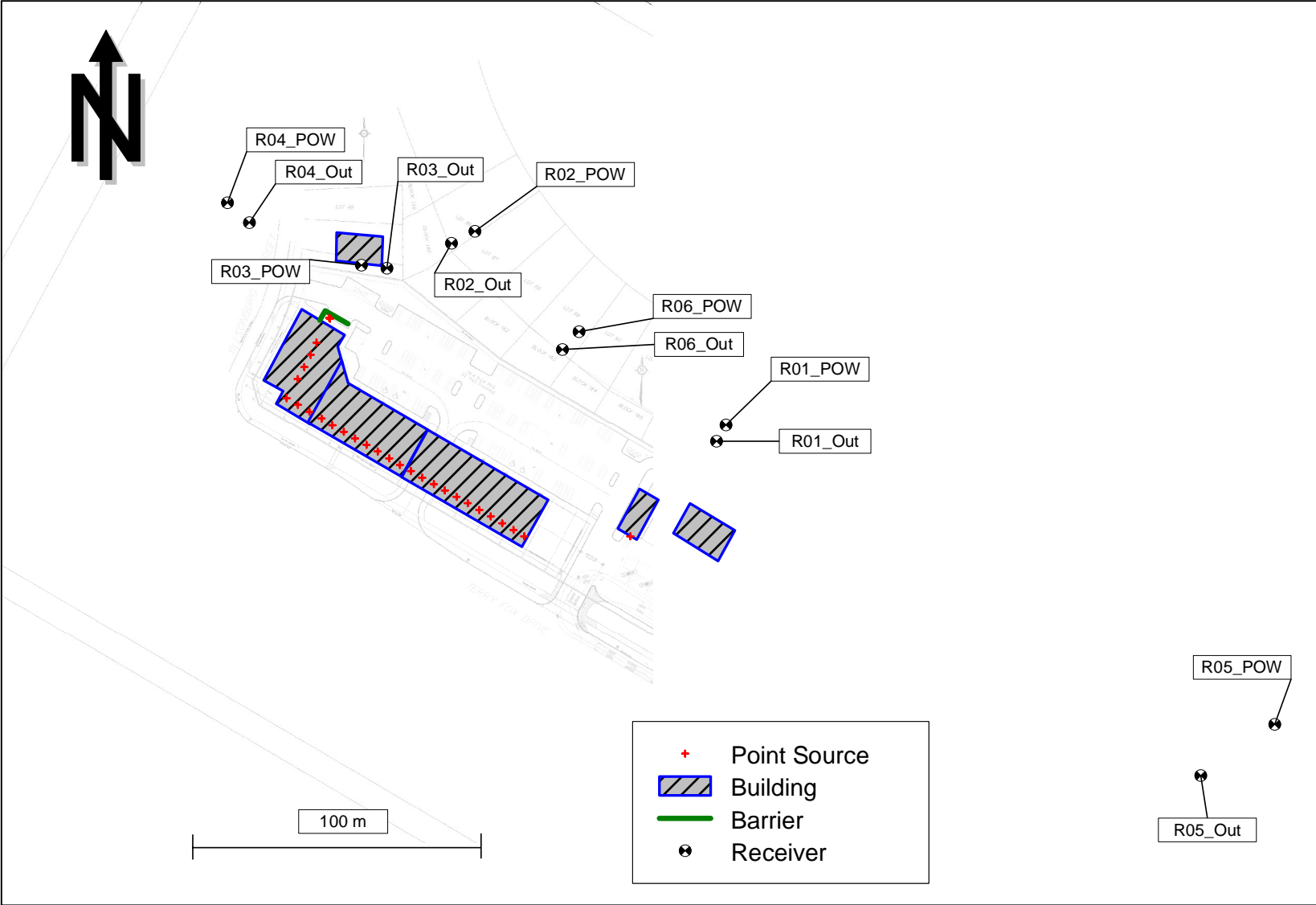


Figure 4: Point of Reception Locations



Tables

Table 5: Noise Source Summary

Source ID	Description	Sound Power Level (dBA)	Source Location	Sound Characteristic ³	Noise Control Measures ⁴
3TonRTUa	3 Ton Rooftop Unit	77	O	S	U
3TonRTUb	3 Ton Rooftop Unit	77	O	S	U
3TonRTUc	3 Ton Rooftop Unit	77	O	S	U
3TonRTUd	3 Ton Rooftop Unit	77	O	S	U
3TonRTUe	3 Ton Rooftop Unit	77	O	S	U
3TonRTUf	3 Ton Rooftop Unit	77	O	S	U
3TonRTUg	3 Ton Rooftop Unit	77	O	S	U
3TonRTUh	3 Ton Rooftop Unit	77	O	S	U
3TonRTUi	3 Ton Rooftop Unit	77	O	S	U
3TonRTUj	3 Ton Rooftop Unit	77	O	S	U
3TonRTUk	3 Ton Rooftop Unit	77	O	S	U
3TonRTUl	3 Ton Rooftop Unit	77	O	S	U
3TonRTUm	3 Ton Rooftop Unit	77	O	S	U
3TonRTUn	3 Ton Rooftop Unit	77	O	S	U
3TonRTUo	3 Ton Rooftop Unit	77	O	S	U
3TonRTUp	3 Ton Rooftop Unit	77	O	S	U
3TonRTUq	3 Ton Rooftop Unit	77	O	S	U
3TonRTUr	3 Ton Rooftop Unit	77	O	S	U
3TonRTUs	3 Ton Rooftop Unit	77	O	S	U
3TonRTUt	3 Ton Rooftop Unit	77	O	S	U
3TonRTUu	3 Ton Rooftop Unit	77	O	S	U
3TonRTUv	3 Ton Rooftop Unit	77	O	S	U
5TonRTUa	5 Ton Rooftop Unit	77	O	S	U

Source ID	Description	Sound Power Level (dBA)	Source Location	Sound Characteristic ³	Noise Control Measures ⁴
5TonRTUb	5 Ton Rooftop Unit	77	O	S	U
5TonRTUc	5 Ton Rooftop Unit	77	O	S	U
5TonRTUd	5 Ton Rooftop Unit	77	O	S	U
CWExit	Car wash blowers with silencer kits installed – emits through open car wash exit only	108	O	S	S
TruckIdle	Idling Delivery Truck	90	O	S	B
ReefCompressor	Refrigerated unit compressor noise	97	O	S	B

Notes to Table 5:

- Power level is referenced to 10^{-12} Watts and is measured or predicted after applicable penalties are applied
- Source Location
 - O - Located/installed outside the building, including on roof
 - I - Located/installed inside the building
- Sound Characteristics
 - S - Steady
 - T - Tonal
- Existing Noise Control Measures
 - S - silencers, muffler, enclosure
 - B - sound barrier, berms, acoustical screening
 - U - Uncontrolled

Table 6: Noise Impact Table – Plane of Window Points of Reception

	R01_POW			R02_POW			R03_POW			R04_POW			R05_POW			R06_POW		
Source ID	Dist. (m)	Day/Eve Leq, 1hr (dBA)	Night Leq, 1hr (dBA)	Dist. (m)	Day/Eve Leq, 1hr (dBA)	Night Leq, 1hr (dBA)	Dist. (m)	Day/Eve Leq, 1hr (dBA)	Night Leq, 1hr (dBA)	Dist. (m)	Day/Eve Leq, 1hr (dBA)	Night Leq, 1hr (dBA)	Dist. (m)	Day/Eve Leq, 1hr (dBA)	Night Leq, 1hr (dBA)	Dist. (m)	Day/Eve Leq, 1hr (dBA)	Night Leq, 1hr (dBA)
3TonRTUa	111	27	27	86	28	28	74	31	31	113	22	22	313	18	18	76	30	30
3TonRTUb	107	27	27	88	28	28	77	30	30	117	22	22	309	18	18	75	30	30
3TonRTUc	104	27	27	89	28	28	80	30	30	121	21	21	304	19	19	73	30	30
3TonRTUd	100	27	27	91	28	28	84	30	30	126	21	21	300	19	19	72	30	30
3TonRTUe	97	28	28	93	28	28	87	29	29	130	21	21	295	19	19	71	30	30
3TonRTUf	94	28	28	95	27	27	91	30	30	134	20	20	291	19	19	71	30	30
3TonRTUg	91	28	28	97	27	27	95	29	29	138	21	21	286	19	19	71	30	30
3TonRTUh	88	29	29	99	27	27	98	29	29	143	22	22	282	19	19	71	30	30
3TonRTUi	85	29	29	102	27	27	102	29	29	147	22	22	278	19	19	72	30	30
3TonRTUj	82	29	29	105	26	26	106	27	27	151	22	22	273	19	19	73	30	30
3TonRTUk	80	30	30	108	26	26	110	27	27	155	24	24	269	19	19	74	30	30
3TonRTUl	114	28	28	85	29	29	71	31	31	109	22	22	317	18	18	78	29	29
3TonRTUm	118	27	27	84	29	29	68	32	32	105	21	21	322	18	18	79	29	29
3TonRTUn	121	27	27	84	29	29	65	32	32	101	21	21	326	18	18	81	29	29
3TonRTUo	125	27	27	83	29	29	63	32	32	97	21	21	330	18	18	84	30	30
3TonRTUp	129	27	27	83	29	29	60	33	33	93	20	20	335	18	18	86	31	31
3TonRTUq	133	27	27	83	29	29	58	33	33	89	19	19	339	18	18	89	30	30
3TonRTUr	137	27	27	84	29	29	57	33	33	86	17	17	344	18	18	92	30	30
3TonRTUs	141	27	27	84	31	31	55	22	22	82	14	14	348	18	18	94	30	30
3TonRTUt	145	24	24	85	29	29	54	28	28	78	30	30	353	16	16	98	27	27
3TonRTUu	149	24	24	86	29	29	53	28	28	75	31	31	357	15	15	101	27	27
3TonRTUv	153	23	23	88	28	28	53	28	28	71	31	31	362	15	15	104	27	27
5TonRTUa	145	24	24	67	31	31	31	34	34	58	33	33	359	15	15	91	27	27
5TonRTUb	146	24	24	72	30	30	36	32	32	60	33	33	359	15	15	94	27	27
5TonRTUc	148	23	23	76	30	30	41	31	31	63	32	32	360	15	15	96	27	27
5TonRTUd	150	23	23	80	29	29	45	29	29	66	32	32	360	15	15	99	27	27
CWExit	51	47	0	119	41	0	133	45	0	182	45	0	233	43	0	73	44	0
TruckIdle	143	40	0	59	40	0	22	44	0	54	32	0	358	33	0	87	41	0
ReefCompressor	143	47	0	59	50	0	22	53	0	54	41	0	358	40	0	87	50	0

Table 7: Noise Impact Table – Outdoor Points of Reception

	R01_Out			R02_Out			R03_Out			R04_Out			R05_Out			R06_Out		
Source ID	Dist. (m)	Day/Eve Leq,1hr (dBA)	Night Leq, 1hr (dBA)	Dist. (m)	Day/Eve Leq,1hr (dBA)	Night Leq, 1hr (dBA)	Dist. (m)	Day/Eve Leq,1hr (dBA)	Night Leq, 1hr (dBA)	Dist. (m)	Day/Eve Leq,1hr (dBA)	Night Leq, 1hr (dBA)	Dist. (m)	Day/Eve Leq,1hr (dBA)	Night Leq, 1hr (dBA)	Dist. (m)	Day/Eve Leq,1hr (dBA)	Night Leq, 1hr (dBA)
3TonRTUa	107	27	27	81	28	28	71	31	31	103	13	13	294	19	19	68	31	31
3TonRTUb	103	27	27	82	28	28	74	31	31	107	14	14	290	19	19	66	31	31
3TonRTUc	99	28	28	84	28	28	77	31	31	111	14	14	285	19	19	65	31	31
3TonRTUd	96	28	28	86	27	27	80	27	27	115	14	14	281	19	19	64	31	31
3TonRTUe	92	28	28	88	27	27	83	26	26	120	15	15	276	20	20	63	31	31
3TonRTUf	89	28	28	91	27	27	87	26	26	124	14	14	272	20	20	63	31	31
3TonRTUg	86	29	29	93	26	26	90	24	24	128	13	13	267	20	20	63	31	31
3TonRTUh	83	29	29	96	26	26	94	24	24	132	14	14	263	20	20	63	31	31
3TonRTUi	80	29	29	99	26	26	97	24	24	137	15	15	258	20	20	64	31	31
3TonRTUj	77	30	30	102	25	25	101	23	23	141	20	20	254	20	20	65	31	31
3TonRTUk	75	30	30	105	25	25	105	23	23	145	20	20	249	20	20	66	31	31
3TonRTUl	110	27	27	79	28	28	69	34	34	99	12	12	299	19	19	69	30	30
3TonRTUm	114	27	27	78	29	29	66	34	34	95	13	13	303	19	19	71	30	30
3TonRTUn	118	26	26	77	29	29	64	34	34	91	14	14	308	19	19	73	30	30
3TonRTUo	122	26	26	76	29	29	62	33	33	87	14	14	312	19	19	76	31	31
3TonRTUp	126	26	26	76	29	29	60	33	33	84	15	15	317	19	19	78	31	31
3TonRTUq	130	26	26	76	29	29	59	33	33	80	12	12	321	19	19	81	30	30
3TonRTUr	134	26	26	76	29	29	58	33	33	76	11	11	326	19	19	84	30	30
3TonRTUs	138	26	26	76	31	31	57	28	28	73	10	10	330	19	19	87	30	30
3TonRTUt	142	23	23	77	29	29	57	25	25	69	23	23	335	16	16	91	27	27
3TonRTUu	146	23	23	78	29	29	57	23	23	66	25	25	339	16	16	94	27	27
3TonRTUv	150	22	22	79	29	29	57	23	23	62	26	26	344	16	16	97	27	27
5TonRTUa	143	22	22	58	31	31	36	31	31	48	28	28	342	16	16	86	27	27
5TonRTUb	144	22	22	63	31	31	40	28	28	51	27	27	342	16	16	88	27	27
5TonRTUc	146	22	22	67	30	30	45	26	26	54	27	27	343	16	16	90	27	27
5TonRTUd	147	22	22	71	30	30	50	25	25	57	26	26	343	16	16	93	27	27
CWExit	45	48	0	119	40	0	126	47	0	172	46	0	215	46	0	69	44	0
TruckIdle	141	40	0	50	38	0	27	41	0	43	33	0	342	31	0	82	45	0
ReefCompressor	141	46	0	50	47	0	26	50	0	44	42	0	342	38	0	82	50	0

Appendices

Appendix A - Noise Terminology

Term	Definition
Sound	Pressure wave travelling through a medium, such as air.
Noise	Unwanted sound.
Acoustics	The science of sound propagation and transmission.
Decibel, dB	A logarithmic ratio, not strictly a unit, used to describe sound levels. For sound pressure, the reference level is 20 micropascals (threshold of hearing).
Frequency	The rate at which an event is repeated. Measured in Hertz (Hz), where 1 Hz = 1 oscillation/sec. Normal human hearing extends over a range of frequencies from about 20 Hz to about 20 kHz.
Octave Band	A band of frequencies where the upper limiting frequency is twice the lower limiting frequency. Octave bands are identified by their centre-frequencies. The octave bands standardized for acoustic measurements include those centered at 31.5, 63, 125, 250, 500, 1000, 2000, 4000, & 8000 Hz.
A-Weighting Network, dBA	A frequency weighting network intended to represent the variation in the ear's ability to hear different frequencies. Overall sound levels calculated or measured using the A-weighting network are indicated by dBA rather than dB.
Sound Pressure Level (SPL, L_p)	A measurement of instantaneous sound pressure and equal to 10 times the logarithm (base 10) of the ratio of the instantaneous sound pressure of a sound divided by the reference sound pressure of 20 μ Pa (0 dB). Reported and measured in decibels (dB or dBA).
L_{eq} - "Equivalent sound level"	Value of a constant sound pressure level which would result in the same total sound energy as would the measured time-varying sound pressure level over equivalent time duration. The $L_{eq,1hr}$, for example, describes the equivalent continuous sound level over a 1 hour period.

Appendix B – Relevant Drawings and Manufacturer Sound Level Data

Project:
Heritage Hills Retail
471 Terry Fox Dr.,
Ottawa, Ontario



True North



Project North

Gross Bldg Area:
14,395 SF

Issue for Review		21 Nov 18
No.	Issue/Revision	Date:



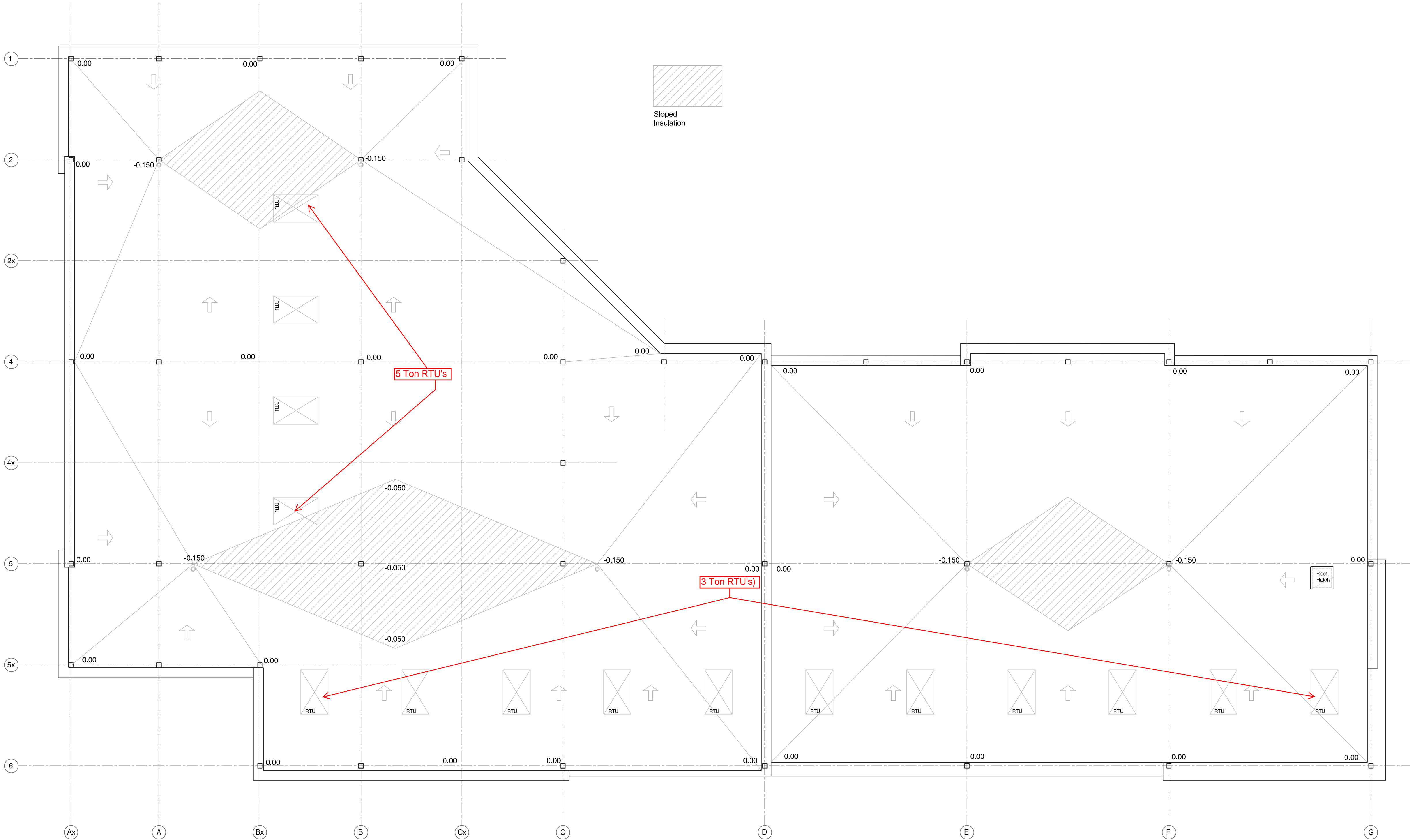
113 Clarendon Ave.,
Ottawa, ON K1Y 0R1
(613) 850-9865
gorderskine@gmail.com

Sub Consultant

Drawing:
BUILDING 1
ROOF PLAN

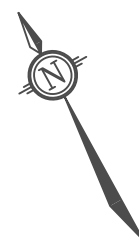
Drawn:	Checked:
Approved:	Scale: 1/8" = 1'-0"
Proj. No. 013-2017	Date: Jan. 15, 2018

Seal	Drawing A-103 Rev. 0
------	---



Project:

Heritage Hills Retail
471 Terry Fox Dr.,
Ottawa, Ontario

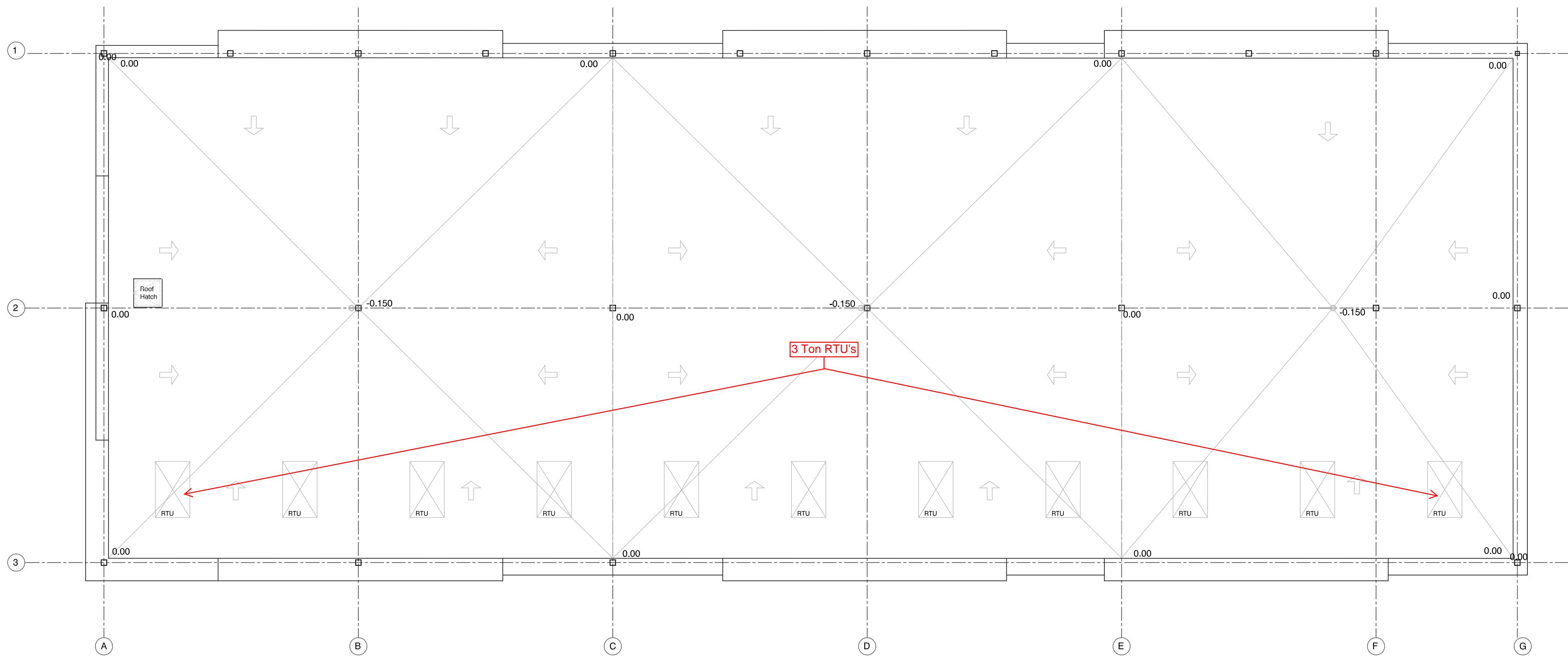


True North



Project North

Gross Bldg Area:
11,170 SF



Issue for Review		21Nov18
No.	Issue/Revision	Date:



113 Clarendon Ave.,
Ottawa, ON K1Y 0R1
(613) 850-9865
gorderskine@gmail.com

Sub Consultant

Drawing:

**BUILDING 2
ROOF PLAN**

Drawn:	Checked:
Approved:	Scale: 1/8" = 1'-0"
Proj. No. 013-2017	Date: Jan. 15, 2018

Seal	Drawing A-104 Rev. 0
------	-----------------------------------

TOPOGRAPHICAL PLAN OF
BLOCK 170
REGISTERED PLAN 4M-1413
CITY OF OTTAWA

Prepared by Annis, O'Sullivan, Vollebakk Ltd.

Scale 1 : 250
10 7.5 5.0 2.5 0 5 10 Metres

Metric
DISTANCES SHOWN ON THIS PLAN ARE IN METRES AND
CAN BE CONVERTED TO FEET BY DIVIDING BY 0.3048

Aug 2, 2018
Date
E.H. Herweyer O.L.S.

Notes & Legend

Denotes	
WV	Water Valve
MH-ST	Maintenance Hole (Storm Sewer)
MH-S	Maintenance Hole (Sanitary)
MH-T	Maintenance Hole (Traffic)
MH-U	Maintenance Hole (Unidentified)
UWS	Underground Storm Sewer
USS	Underground Sanitary Sewer
UW	Underground Water
UB	Underground Bell
UG	Underground Gas
UR	Underground Rogers
UP	Underground Power
UT	Underground Traffic
CB	Catch Basin
CHI	Catch Basin Inlet
DI	Ditch Inlet
CPP	Corrugated Plastic Pipe
T/P	Top of Pipe
Inv.	Invert
T/G	Top of Grate
HH	Handhole
TB-B	Bell Terminal Box
TS-P	Traffic Signal Post
Δ S	Sign
LS	Light Standard
Loc. Elev.	Location of Elevations
Top of Curb / Wall Elevation	
C/L	Centreline
WRW	Wooden Retaining Wall
SRW	Stone Retaining Wall
CLF	Chain Link Fence
PWF	Post and Wire Fence
DC	Depressed Curb

SITE AREA = 1.1789 Hectares

BOUNDARY INFORMATION COMPILED FROM
REGISTERED PLAN 4M-1413.

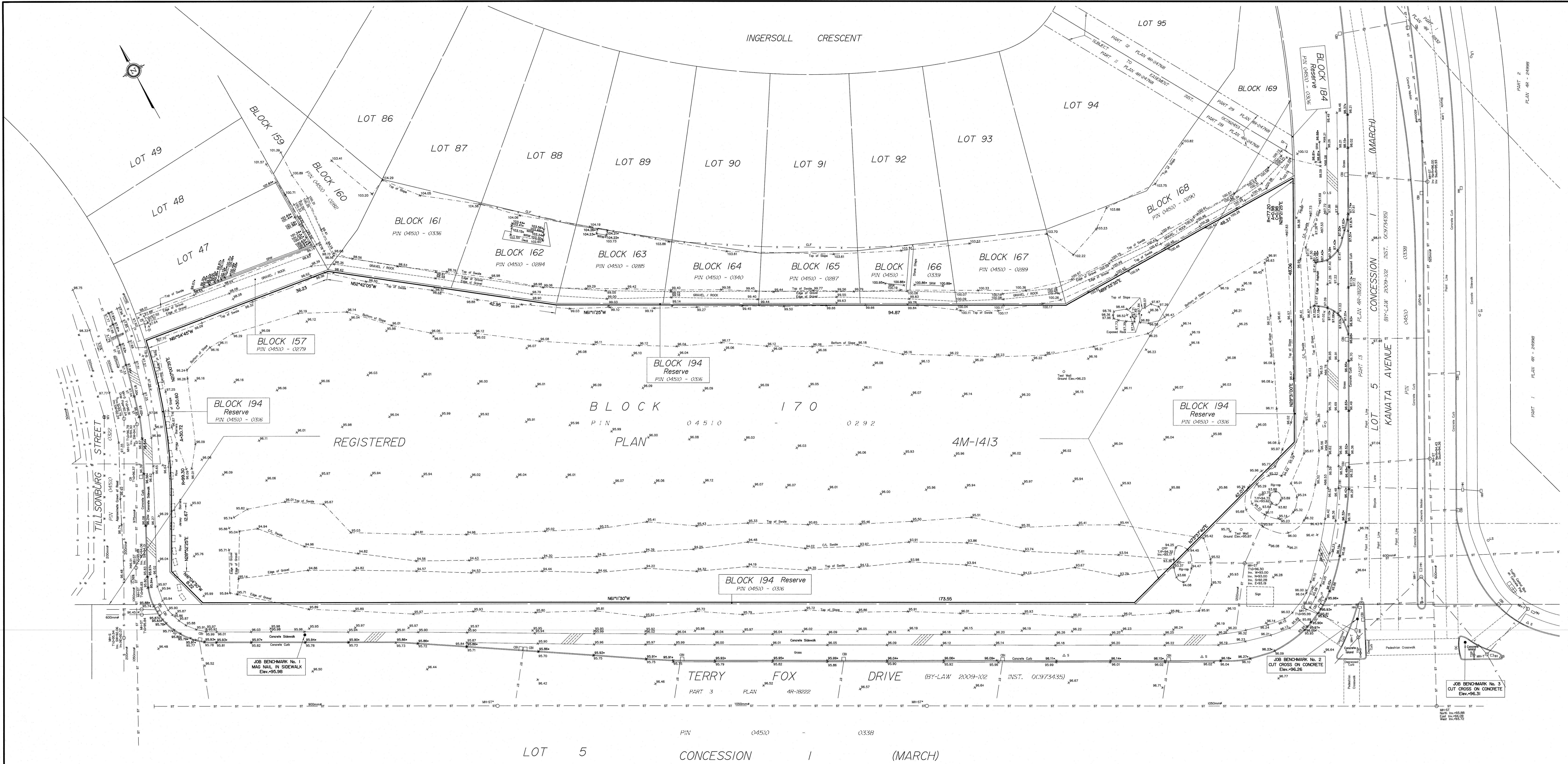
Bearings are grid, derived from the southerly limit of Block 170
Registered plan 4M-1413 shown to be N81°11'30"W thereon
and are referred to the Central Meridian of MTM Zone 9
(78°30' West Longitude) NAD-83 (original).

ELEVATION NOTES

1. Elevations shown are geodetic and are referred to the CGVD28 geodetic datum.
2. It is the responsibility of the user of this information to verify that the job benchmark
has not been altered or disturbed and that it's relative elevation and description
agrees with the information shown on this drawing.

UTILITY NOTES

- This drawing cannot be accepted as acknowledging all of the utilities and it will be the responsibility of the user to contact the respective utility authorities for confirmation.
- Only visible surface utilities were located.
- A field location of underground plant by the pertinent utility authority is mandatory before any work involving breaking ground, probing, excavating etc.
- Underground services and inverts are taken from City of Ottawa Engineering Drawings G-O-30, H-O-06, H-O-12, H-N-07, 102116-P2, 102116-P2, 11089-P2, MH-ST* and underground services on Terry Fox Drive are taken from City of Ottawa Engineering Drawings H-O-06 and H-O-12.



Raider commercial packaged rooftop unit performance specifications

			COOLING DATA		HEATING INPUT				PHYSICAL DATA		
	NOM TON.	MODEL	EER	SEER OR IEER	LOW	STD.	MED.	HIGH	DIMENSIONS H X W X L [IN.]	SHIP WT. [LBS.]	
GAS/ELECTRIC UNITS	3	ZGA036S4B	11.5	13.0	–	65	108	–	37 x 47 x 76	489	
	3	ZGB036S4B	11.7	14.0	–	65	108	–	37 x 47 x 76	529	
	4	ZGA048S4B	10.6	13.0	–	65	108	150	37 x 47 x 76	503	
	4	ZGB048S4B	11.2	14.0	–	65	108	150	37 x 47 x 76	538	
	5	ZGA060S4B	10.7	13.0	–	65	108	150	37 x 47 x 76	535	
	5	ZGB060S4B	11.2	14.0	–	65	108	150	45 x 47 x 76	597	
	6	ZGA072S4B	11.2	12.0	–	65	108	150	45 x 47 x 76	645	
	6	ZGB074S4T	11.2	15.0	–	65	108	150	45 x 47 x 76	645	
	7.5	ZGA092S4B/M	11.0	11.8/13.0	–	130	180	240	49 x 61 x 96	987	
	8.5	ZGA102S4B/M	11.0	11.8/13.0	–	130	180	240	49 x 61 x 96	1,007	
	10	ZGA120S4B/M	11.0	11.8/13.0	–	130	180	240	49 x 61 x 96	1,047	
	12.5	ZGA150S4B/M	10.8	11.4/12.0	–	130	180	240	49 x 61 x 96	1,137	
					KW RANGE*						
ELECTRIC/ELECTRIC UNITS	3	ZCA036S4B	11.5	13.0	5	7.5	10	15	–	37 x 47 x 76	456
	3	ZCB036S4B	11.7	14.0	5	7.5	10	15	–	37 x 47 x 76	479
	4	ZCA048S4B	10.6	13.0	5	7.5	10	15	22.5	37 x 47 x 76	470
	4	ZCB048S4B	11.2	14.0	5	7.5	10	15	22.5	37 x 47 x 76	488
	5	ZCA060S4B	10.7	13.0	5	7.5	10	15	22.5	37 x 47 x 76	502
	5	ZCB060S4B	11.2	14.0	5	7.5	10	15	22.5	45 x 47 x 76	573
	6	ZCA072S4B	11.2	12.0	7.5	10	15	22.5	30	45 x 47 x 76	573
	6	ZCB074S4T	11.2	15.0	7.5	10	15	22.5	30	45 x 47 x 76	573
	7.5	ZCA092S4B/M	11.2	12.0/13.2	7.5	15	22.5	30	45	49 x 61 x 96	939
	8.5	ZCA102S4B/M	11.2	12.0/13.2	7.5	15	22.5	30	45	49 x 61 x 96	959
	10	ZCA120S4B/M	11.2	12.0/13.2	15	22.5	30	45	60	49 x 61 x 96	999
	12.5	ZCA150S4B/M	11.0	11.6/12.2	15	22.5	30	45	60	49 x 61 x 96	1,089
					47 CAP.	HSPF/COP 47	17 CAP.	COP 17			
HEAT PUMP UNITS	3	ZHA036S4B	11.3	13.0	34,200	7.7/3.42	20,400	2.18	37 x 47 x 76	535	
	3	ZHB036S4B	11.4	14.0	34,200	8.0/3.50	20,000	2.2	45 x 47 x 76	585	
	4	ZHA048S4B	10.8	13.0	45,000	7.7/3.40	27,400	2.24	37 x 47 x 76	544	
	4	ZHB048S4B	11.2	14.0	45,000	8.0/3.50	26,100	2.2	45 x 47 x 76	590	
	5	ZHA060S4B	10.9	13.0	58,500	7.7/3.50	33,400	2.20	45 x 47 x 76	590	
	5	ZHB060S4B	11.2	14.0	55,000	8.0/3.60	32,500	2.25	45 x 47 x 76	615	
	7.5	ZHA092S4B/M	11.0	12.2/12.5	89,000	3.3	53,000	2.25	49 x 61 x 96	1,121	
	8.5	ZHA102S4B/M	11.0	12.2/12.5	100,000	3.3	55,000	2.25	49 x 61 x 96	1,153	
	10	ZHA120S4B/M	10.7	11.3/12.5	116,000	3.3	70,000	2.25	49 x 61 x 96	1,211	

NOTE: Due to Lennox' ongoing commitment to quality, all specifications, ratings and dimensions are subject to change.

BLOWER DATA

OPTIONS / ACCESSORIES AIR RESISTANCE - in. w.g.

Air Volume cfm	Wet Indoor Coil		Gss Heat Exchanger		Economizer	
	ZGB036, ZGB048	ZGB060, ZGB074	Medium	High	Downflow	Horizontal
900	0.01	---	0.05	0.06	0.03	0.04
1000	0.02	---	0.06	0.06	0.03	0.05
1100	0.02	---	0.06	0.07	0.04	0.05
1200	0.02	---	0.06	0.07	0.05	0.06
1300	0.03	---	0.07	0.07	0.05	0.07
1400	0.03	---	0.07	0.08	0.06	0.08
1500	0.04	---	0.07	0.08	0.07	0.08
1600	0.04	0.03	0.07	0.08	0.08	0.09
1700	0.05	0.03	0.07	0.08	0.09	0.10
1800	0.05	0.03	0.06	0.08	0.10	0.11
1900	0.06	0.04	0.06	0.08	0.11	0.12
2000	0.06	0.04	0.07	0.09	0.12	0.13
2100	---	0.05	0.08	0.10	0.13	0.14
2200	---	0.05	0.10	0.12	0.14	0.15
2300	---	0.05	0.11	0.14	0.15	0.16
2400	---	0.06	0.11	0.13	0.16	0.18
2500	---	0.06	0.11	0.15	0.18	0.19
2600	---	0.07	0.13	0.16	0.19	0.20
2700	---	0.07	0.15	0.18	0.20	0.21
2800	---	0.07	0.13	0.16	0.22	0.23
2900	---	0.08	0.13	0.18	0.23	0.24

OUTDOOR SOUND DATA

Unit Model No.	Octave Band Linear Sound Power Levels dB, re 10 ⁻¹² Watts - Center Frequency - Hz							¹ Sound Rating Number (SRN) (dBA)
	125	250	500	1000	2000	4000	8000	
ZGB036	66	70	73	72	70	67	60	78
ZGB048	68	71	75	74	71	68	63	80
ZGB060	64	68	72	73	69	67	63	78
ZGB074	73	76	80	78	73	68	66	84

¹ Sound Rating Number according to ANSI/AHRI Standard 270-2008. "SRN" is the overall A-Weighted Sound Power Level, (LWA), dB (100 Hz to 10,000 Hz).

		SYSTEM CONFIGURATION	
		30hp Aircraft	Three (3) - 10hp producers
		Three (3) - 10hp producers	Three (3) Fixed Nozzles
STANDARD SYSTEMS	Distance (from building)	Noise Level (DbA)	End of Building ↓
	0 ft.	100.0	
	10 ft.	96.5	
	20 ft.	95.0	
	30 ft.	94.0	
	40 ft.	88.0	
	50 ft.	84.0	
	60 ft.	81.0	
	70 ft.	78.0	
	80 ft.	77.0	
	90 ft.	75.5	
	100 ft.	75.5	
STANDARD SYSTEMS W/ SILENCER KIT(S) INSTALLED	Distance (from building)	Noise Level (DbA)	End of Building ↓
	0 ft.	97.0	
	10 ft.	94.5	
	20 ft.	92.5	
	30 ft.	91.0	
	40 ft.	85.0	
	50 ft.	81.0	
	60 ft.	78.0	
	70 ft.	76.0	
	80 ft.	74.0	
	90 ft.	73.0	
	100 ft.	72.0	

Appendix C – Ambient Monitoring Data

Monitoring Locations



Monitoring Location 1

Monitoring Location 2

Monitoring Location 3

Guelph Private

Terry Fox Dr

Minimum Measured Hourly Leq			
	Monitoring Location 1 - Representative	Monitoring Location 2	Monitoring Location 3
Lowest Day Time Hour	63		63
Lowest Evening Hour		57	
Lowest Night Time Hour			47

Monitoring Location	Description	Distance from road (m)	Distance adjustment (relative to representative area) (dB)
1	Mid parking lot	29	-2.5
2	Near Fence Line	22	-3.7

With Distance Corrections			
	Monitoring Location 1	Monitoring Location 2	Monitoring Location 3
Lowest Day Time Hour	63		59
Lowest Evening Hour		55	
Lowest Night Time Hour			43

Used as Ambient Background Level

Project Name: Heritage Hills
Project Number: 60546152

Receptor Location: Monitoring Location 1
Logging Interval: 0:15:00 h:mm:ss

Equipment
Monitor Type: Noise
Designation:

SoundPro



Period	Start Time	End Time
Day-time	7:00 AM	7:00 PM
Evening	7:00 PM	11:00 PM
Night-time	11:00 PM	7:00 AM

Daylight Savings No

Minimum day hour 63
Minimum eve hour N/A
Minimum night hour N/A

Date	Interval Ending (DST)	Interval Ending (LST)	For Weather Lookup		Time Period (DST)	Overload	Sound Pressure Levels		Enviro Canada Weather Station 1 Ottawa Airport		Enviro Canada Weather Station 2 Ottawa Airport		Exclude Data due to Weather		Valid Measurements of Sound Pressure Levels L _{EQ-15min} (dBA)	Rolling 1 hr Leq		
			Round +Hour (LST)	Date/Time (LST)			L _{EQ} (dBA)	L ₉₀	Wind Speed (kph)	Weather Conditions	Wind Speed (kph)	Weather Conditions	Wind Exclusion > 20kph	Condition Exclusion		DAY	EVENING	NIGHT
14-Jan-2019	4:15:00 PM	4:15:00 PM	16	Mon 14-Jan-2019 16:00	Day-time	0	62.8	0.0	8	Mostly Cloudy	8	Mostly Cloudy	Include	Include	No			
14-Jan-2019	4:30:00 PM	4:30:00 PM	16	Mon 14-Jan-2019 16:00	Day-time	0	63.7	0.0	8	Mostly Cloudy	8	Mostly Cloudy	Include	Include	No	63.7		
14-Jan-2019	4:45:00 PM	4:45:00 PM	17	Mon 14-Jan-2019 17:00	Day-time	0	63.2	0.0	4	NA	4	NA	Include	Include	No	63.2		
14-Jan-2019	5:00:00 PM	5:00:00 PM	17	Mon 14-Jan-2019 17:00	Day-time	0	63.9	0.0	4	NA	4	NA	Include	Include	No	63.9		
14-Jan-2019	5:15:00 PM	5:15:00 PM	17	Mon 14-Jan-2019 17:00	Day-time	0	63.3	0.0	4	NA	4	NA	Include	Include	No	63.3	64	
14-Jan-2019	5:30:00 PM	5:30:00 PM	17	Mon 14-Jan-2019 17:00	Day-time	0	64.1	0.0	4	NA	4	NA	Include	Include	No	64.1	64	
14-Jan-2019	5:45:00 PM	5:45:00 PM	18	Mon 14-Jan-2019 18:00	Day-time	0	63.3	0.0	9	NA	9	NA	Include	Include	No	63.3	64	
14-Jan-2019	6:00:00 PM	6:00:00 PM	18	Mon 14-Jan-2019 18:00	Day-time	0	63.1	0.0	9	NA	9	NA	Include	Include	No	63.1	63	
14-Jan-2019	6:15:00 PM	6:15:00 PM	18	Mon 14-Jan-2019 18:00	Day-time	0	63.2	0.0	9	NA	9	NA	Include	Include	No	#N/A		

Project Name: Heritage Hills
Project Number: 60546152

Receptor Location: Monitoring Location 2
Logging Interval: 0:15:00 h:mm:ss

Equipment
Monitor Type: SoundPro
Designation: MX (S/N XXXXX)



Period	Start Time	End Time
Day-time	7:00 AM	7:00 PM
Evening	7:00 PM	11:00 PM
Night-time	11:00 PM	7:00 AM

Daylight Savings No

Minimum day hour N/A
Minimum eve hour 57
Minimum night hour N/A

Date	Interval Ending (DST)	Interval Ending (LST)	For Weather Lookup		Time Period (DST)	Sound Pressure Levels L _{EQ} (dBA)	Enviro Canada Weather Station 1 Ottawa Airport				Exclude Data due to Weather	Valid Measurements of Sound Pressure Levels L _{EQ-15min} (dBA)	Rolling 1 hr Leq		
			Round +Hour (LST)	Date/Time (LST)			Wind Speed (kph)	Weather Conditions	Wind Exclusion > 20kph	Condition Exclusion			DAY	EVENING	NIGHT
22-Jan-2019	8:35:21 PM	8:35:00 PM	21	Tue 22-Jan-2019 21:00	Evening	58.8	13	NA	Include	Include	No				
22-Jan-2019	8:50:21 PM	8:50:00 PM	21	Tue 22-Jan-2019 21:00	Evening	58.0	13	NA	Include	Include	No	58.0			
22-Jan-2019	9:05:21 PM	9:05:00 PM	21	Tue 22-Jan-2019 21:00	Evening	58.1	13	NA	Include	Include	No	58.1			
22-Jan-2019	9:20:21 PM	9:20:00 PM	21	Tue 22-Jan-2019 21:00	Evening	58.0	13	NA	Include	Include	No	58.0			
22-Jan-2019	9:35:21 PM	9:35:00 PM	22	Tue 22-Jan-2019 22:00	Evening	56.6	14	Mostly Cloudy	Include	Include	No	56.6		58	
22-Jan-2019	9:50:21 PM	9:50:00 PM	22	Tue 22-Jan-2019 22:00	Evening	55.5	14	Mostly Cloudy	Include	Include	No	55.5		57	
22-Jan-2019	10:05:21 PM	10:05:00 PM	22	Tue 22-Jan-2019 22:00	Evening	56.7	14	Mostly Cloudy	Include	Include	No	56.7		57	
22-Jan-2019	10:20:21 PM	10:20:00 PM	22	Tue 22-Jan-2019 22:00	Evening	57.1	14	Mostly Cloudy	Include	Include	No				
22-Jan-2019	10:35:21 PM	10:35:00 PM	23	Tue 22-Jan-2019 23:00	Evening	56.1	23	NA	Exclude	Include	Yes				
22-Jan-2019	10:50:21 PM	10:50:00 PM	23	Tue 22-Jan-2019 23:00	Evening	55.8	23	NA	Exclude	Include	Yes				
22-Jan-2019	11:05:21 PM	11:05:00 PM	23	Tue 22-Jan-2019 23:00	Evening	54.2	23	NA	Exclude	Include	Yes				
22-Jan-2019	11:20:21 PM	11:20:00 PM	23	Tue 22-Jan-2019 23:00	Night-time	53.4	23	NA	Exclude	Include	Yes	#N/A			

Project Name: Heritage Hills
Project Number: 60546152

Receptor Location: Monitoring Location 3
Logging Interval: 0:15:00 h:mm:ss

Equipment
Monitor Type: Noise
Designation:

SoundPro
MX (SN XXXXX)



Period	Start Time	End Time
Day-time	7:00 AM	7:00 PM
Evening	7:00 PM	11:00 PM
Night-time	11:00 PM	7:00 AM

Daylight Savings No

Minimum day hour
Minimum eve hour
Minimum night hour

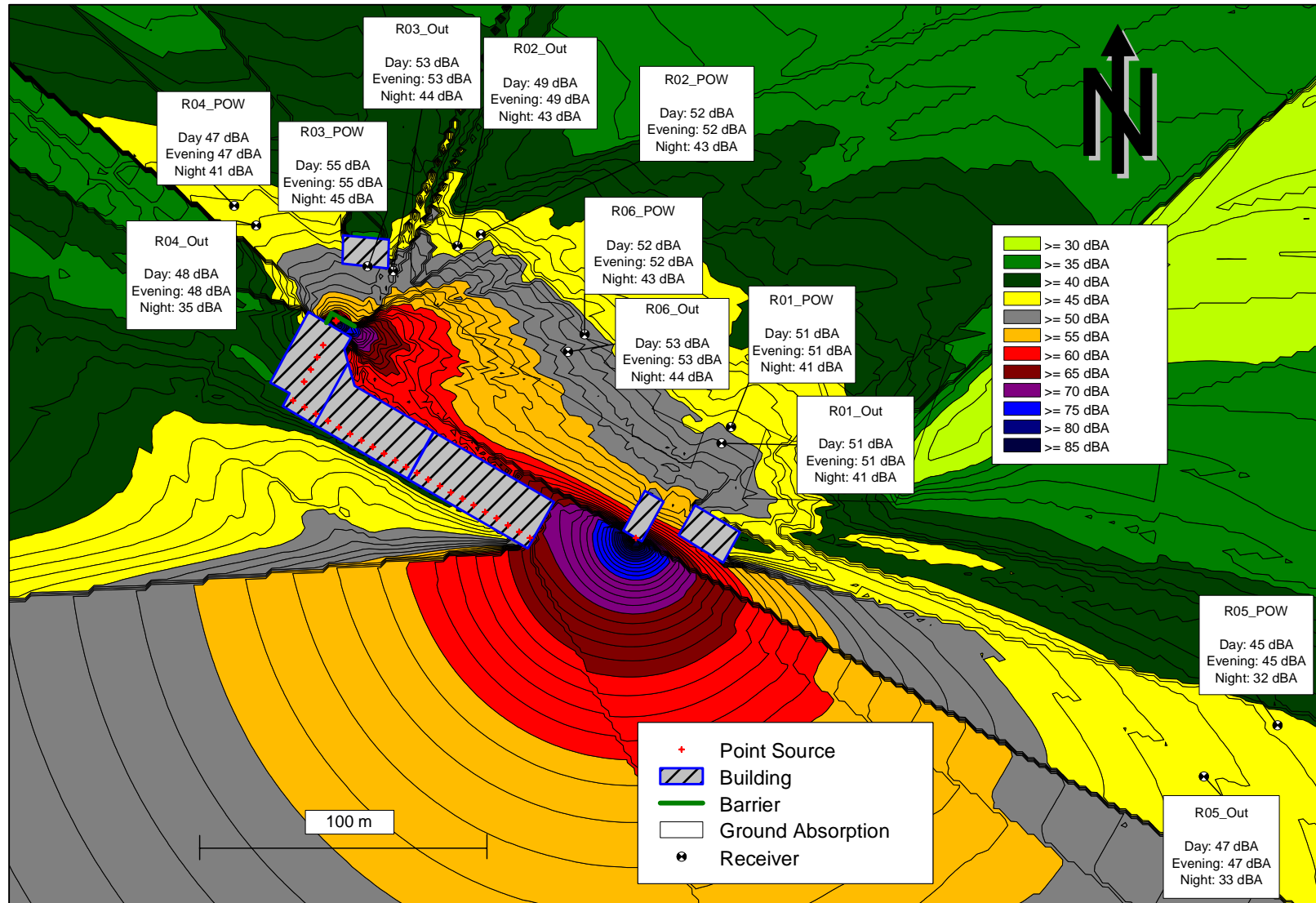
63
N/A
47

Date	Interval Ending (DST)	Interval Ending (LST)	For Weather Lookup		Time Period (DST)	Overload	Sound Pressure Levels			Enviro Canada Weather Station 1		Enviro Canada Weather Station 2		Exclude Data due to Weather	Valid Measurements of Sound Pressure Levels	Rolling 1 hr Leq		
							Round +Hour (LST)	Date/Time (LST)	L _{EQ} (dBA)	L90	Ottawa Airport		Ottawa Airport					
			Wind Speed (kph)	Weather Conditions							Wind Speed (kph)	Weather Conditions	Wind Exclusion > 20kph			Condition Exclusion	L _{EQ-15min} (dBA)	DAY
24-Jan-2019	6:45:00 PM	6:45:00 PM	19	Thu 24-Jan-2019 19:00	Day-time	0	61.9	0.0	22	Snow	22	Snow	Exclude	Exclude	Yes			
24-Jan-2019	7:00:00 PM	7:00:00 PM	19	Thu 24-Jan-2019 19:00	Day-time	0	61.9	0.0	22	Snow	22	Snow	Exclude	Exclude	Yes			
24-Jan-2019	7:15:00 PM	7:15:00 PM	19	Thu 24-Jan-2019 19:00	Evening	0	60.9	0.0	22	Snow	22	Snow	Exclude	Exclude	Yes			
24-Jan-2019	7:30:00 PM	7:30:00 PM	19	Thu 24-Jan-2019 19:00	Evening	0	61.0	0.0	22	Snow	22	Snow	Exclude	Exclude	Yes			
24-Jan-2019	7:45:00 PM	7:45:00 PM	20	Thu 24-Jan-2019 20:00	Evening	0	60.4	0.0	34	Snow	34	Snow	Exclude	Exclude	Yes			
24-Jan-2019	8:00:00 PM	8:00:00 PM	20	Thu 24-Jan-2019 20:00	Evening	0	60.4	0.0	34	Snow	34	Snow	Exclude	Exclude	Yes			
24-Jan-2019	8:15:00 PM	8:15:00 PM	20	Thu 24-Jan-2019 20:00	Evening	0	59.6	0.0	34	Snow	34	Snow	Exclude	Exclude	Yes			
24-Jan-2019	8:30:00 PM	8:30:00 PM	20	Thu 24-Jan-2019 20:00	Evening	0	60.0	0.0	34	Snow	34	Snow	Exclude	Exclude	Yes			
24-Jan-2019	8:45:00 PM	8:45:00 PM	21	Thu 24-Jan-2019 21:00	Evening	0	60.6	0.0	22	Snow	22	Snow	Exclude	Exclude	Yes			
24-Jan-2019	9:00:00 PM	9:00:00 PM	21	Thu 24-Jan-2019 21:00	Evening	0	60.3	0.0	22	Snow	22	Snow	Exclude	Exclude	Yes			
24-Jan-2019	9:15:00 PM	9:15:00 PM	21	Thu 24-Jan-2019 21:00	Evening	0	59.7	0.0	22	Snow	22	Snow	Exclude	Exclude	Yes			
24-Jan-2019	9:30:00 PM	9:30:00 PM	21	Thu 24-Jan-2019 21:00	Evening	0	58.7	0.0	22	Snow	22	Snow	Exclude	Exclude	Yes			
24-Jan-2019	9:45:00 PM	9:45:00 PM	22	Thu 24-Jan-2019 22:00	Evening	0	59.1	0.0	26	Mostly Cloudy	26	Mostly Cloudy	Exclude	Include	Yes			
24-Jan-2019	10:00:00 PM	10:00:00 PM	22	Thu 24-Jan-2019 22:00	Evening	0	56.4	0.0	26	Mostly Cloudy	26	Mostly Cloudy	Exclude	Include	Yes			
24-Jan-2019	10:15:00 PM	10:15:00 PM	22	Thu 24-Jan-2019 22:00	Evening	0	57.7	0.0	26	Mostly Cloudy	26	Mostly Cloudy	Exclude	Include	Yes			
24-Jan-2019	10:30:00 PM	10:30:00 PM	22	Thu 24-Jan-2019 22:00	Evening	0	58.0	0.0	26	Mostly Cloudy	26	Mostly Cloudy	Exclude	Include	Yes			
24-Jan-2019	10:45:00 PM	10:45:00 PM	23	Thu 24-Jan-2019 23:00	Evening	0	55.7	0.0	16	NA	16	NA	Include	Include	No			
24-Jan-2019	11:00:00 PM	11:00:00 PM	23	Thu 24-Jan-2019 23:00	Evening	0	55.2	0.0	16	NA	16	NA	Include	Include	No			
24-Jan-2019	11:15:00 PM	11:15:00 PM	23	Thu 24-Jan-2019 23:00	Night-time	0	55.0	0.0	16	NA	16	NA	Include	Include	No	55.0		
24-Jan-2019	11:30:00 PM	11:30:00 PM	23	Thu 24-Jan-2019 23:00	Night-time	0	54.1	0.0	16	NA	16	NA	Include	Include	No	54.1		
24-Jan-2019	11:45:00 PM	11:45:00 PM	24	Fri 25-Jan-2019 0:00	Night-time	0	54.0	0.0	17	NA	17	NA	Include	Include	No	54.0		
25-Jan-2019	12:00:00 AM	12:00:00 AM	0	Fri 25-Jan-2019 0:00	Night-time	0	55.6	0.0	17	NA	17	NA	Include	Include	No	55.6		55
25-Jan-2019	12:15:00 AM	12:15:00 AM	0	Fri 25-Jan-2019 0:00	Night-time	0	54.1	0.0	17	NA	17	NA	Include	Include	No	54.1		55
25-Jan-2019	12:30:00 AM	12:30:00 AM	0	Fri 25-Jan-2019 0:00	Night-time	0	50.2	0.0	17	NA	17	NA	Include	Include	No	50.2		54
25-Jan-2019	12:45:00 AM	12:45:00 AM	1	Fri 25-Jan-2019 1:00	Night-time	0	50.7	0.0	17	Mostly Cloudy	17	Mostly Cloudy	Include	Include	No	50.7		53
25-Jan-2019	1:00:00 AM	1:00:00 AM	1	Fri 25-Jan-2019 1:00	Night-time	0	48.9	0.0	17	Mostly Cloudy	17	Mostly Cloudy	Include	Include	No	48.9		51
25-Jan-2019	1:15:00 AM	1:15:00 AM	1	Fri 25-Jan-2019 1:00	Night-time	0	49.4	0.0	17	Mostly Cloudy	17	Mostly Cloudy	Include	Include	No	49.4		50
25-Jan-2019	1:30:00 AM	1:30:00 AM	1	Fri 25-Jan-2019 1:00	Night-time	0	48.8	0.0	17	Mostly Cloudy	17	Mostly Cloudy	Include	Include	No	48.8		50
25-Jan-2019	1:45:00 AM	1:45:00 AM	2	Fri 25-Jan-2019 2:00	Night-time	0	52.4	0.0	9	NA	9	NA	Include	Include	No	52.4		50
25-Jan-2019	2:00:00 AM	2:00:00 AM	2	Fri 25-Jan-2019 2:00	Night-time	0	46.9	0.0	9	NA	9	NA	Include	Include	No	46.9		50
25-Jan-2019	2:15:00 AM	2:15:00 AM	2	Fri 25-Jan-2019 2:00	Night-time	0	46	0.0	9	NA	9	NA	Include	Include	No	46.0		49
25-Jan-2019	2:30:00 AM	2:30:00 AM	2	Fri 25-Jan-2019 2:00	Night-time	0	47.2	0.0	9	NA	9	NA	Include	Include	No	47.2		49
25-Jan-2019	2:45:00 AM	2:45:00 AM	3	Fri 25-Jan-2019 3:00	Night-time	0	48	0.0	7	NA	7	NA	Include	Include	No	48.0		47
25-Jan-2019	3:00:00 AM	3:00:00 AM	3	Fri 25-Jan-2019 3:00	Night-time	0	46	0.0	7	NA	7	NA	Include	Include	No	46.0		47
25-Jan-2019	3:15:00 AM	3:15:00 AM	3	Fri 25-Jan-2019 3:00	Night-time	0	51.6	0.0	7	NA	7	NA	Include	Include	No	51.6		49
25-Jan-2019	3:30:00 AM	3:30:00 AM	3	Fri 25-Jan-2019 3:00	Night-time	0	48.3	0.0	7	NA	7	NA	Include	Include	No			
25-Jan-2019	3:45:00 AM	3:45:00 AM	4	Fri 25-Jan-2019 4:00	Night-time	0	52.9	0.0	7	Snow	7	Snow	Include	Exclude	Yes			
25-Jan-2019	4:00:00 AM	4:00:00 AM	4	Fri 25-Jan-2019 4:00	Night-time	0	49.8	0.0	7	Snow	7	Snow	Include	Exclude	Yes			
25-Jan-2019	4:15:00 AM	4:15:00 AM	4	Fri 25-Jan-2019 4:00	Night-time	0	50.9	0.0	7	Snow	7	Snow	Include	Exclude	Yes			
25-Jan-2019	4:30:00 AM	4:30:00 AM	4	Fri 25-Jan-2019 4:00	Night-time	0	51.2	0.0	7	Snow	7	Snow	Include	Exclude	Yes			
25-Jan-2019	4:45:00 AM	4:45:00 AM	5	Fri 25-Jan-2019 5:00	Night-time	0	48.3	0.0	4	Snow	4	Snow	Include	Exclude	Yes			
25-Jan-2019	5:00:00 AM	5:00:00 AM	5	Fri 25-Jan-2019 5:00	Night-time	0	52.6	0.0	4	Snow	4	Snow	Include	Exclude	Yes			
25-Jan-2019	5:15:00 AM	5:15:00 AM	5	Fri 25-Jan-2019 5:00	Night-time	0	50.3	0.0	4	Snow	4	Snow	Include	Exclude	Yes			
25-Jan-2019	5:30:00 AM	5:30:00 AM	5	Fri 25-Jan-2019 5:00	Night-time	0	50.4	0.0	4	Snow	4	Snow	Include	Exclude	Yes			
25-Jan-2019	5:45:00 AM	5:45:00 AM	6	Fri 25-Jan-2019 6:00	Night-time	0	55.7	0.0	7	Snow	7	Snow	Include	Exclude	Yes			
25-Jan-2019	6:00:00 AM	6:00:00 AM	6	Fri 25-Jan-2019 6:00	Night-time	0	56.2	0.0	7	Snow	7	Snow	Include	Exclude	Yes			
25-Jan-2019	6:15:00 AM	6:15:00 AM	6	Fri 25-Jan-2019 6:00	Night-time	0	54.5	0.0	7	Snow	7	Snow	Include	Exclude	Yes			
25-Jan-2019	6:30:00 AM	6:30:00 AM	6	Fri 25-Jan-2019 6:00	Night-time	0	56.0	0.0	7	Snow	7	Snow	Include	Exclude	Yes			
25-Jan-2019	6:45:00 AM	6:45:00 AM	7	Fri 25-Jan-2019 7:00	Night-time	0	55.3	0.0	5	Snow	5	Snow	Include	Exclude	Yes			
25-Jan-2019	7:00:00 AM	7:00:00 AM	7	Fri 25-Jan-2019 7:00	Night-time	0	58.3	0.0	5	Snow	5	Snow	Include	Exclude	Yes			
25-Jan-2019	7:15:00 AM	7:15:00 AM	7	Fri 25-Jan-2019 7:00	Day-time	0	58.0	0.0	5	Snow	5	Snow	Include	Exclude	Yes			
25-Jan-2019	7:30:00 AM	7:30:00 AM	7	Fri 25-Jan-2019 7:00	Day-time	0	59.9	0.0	5	Snow	5	Snow	Include	Exclude	Yes			
25-Jan-2019	7:45:00 AM	7:45:00 AM	8	Fri 25-Jan-2019 8:00	Day-time	0	59.6	0.0	9	Snow	9	Snow	Include	Exclude	Yes			
25-Jan-2019	8:00:00 AM	8:00:00 AM	8	Fri 25-Jan-2019 8:00	Day-time	0	62.1	0.0	9	Snow	9	Snow	Include	Exclude	Yes			
25-Jan-2019	8:15:00 AM	8:15:00 AM	8	Fri 25-Jan-2019 8:00	Day-time	0	62.3	0.0	9	Snow	9	Snow	Include	Exclude	Yes			
25-Jan-2019	8:30:00 AM	8:30:00 AM	8	Fri 25-Jan-2019 8:00	Day-time	0	62.9	0.0	9	Snow	9	Snow	Include	Exclude	Yes			
25-Jan-2019	8:45:00 AM	8:45:00 AM	9	Fri 25-Jan-2019 9:00	Day-time	0	63.4	0.0	10	NA	10	NA	Include	Include	No			
25-Jan-2019	9:00:00 AM	9:00:00 AM	9	Fri 25-Jan-2019 9:00	Day-time	0	64.4	0.0	10	NA	10	NA	Include	Include	No	64.4		
25-Jan-2019	9:15:00 AM	9:15:00 AM	9	Fri 25-Jan-2019 9:00	Day-time	0	63.5	0.0	10	NA	10	NA	Include	Include	No	63.5		
25-Jan-2019	9:30:00 AM	9:30:00 AM	9	Fri 25-Jan-2019 9:00	Day-time	0	63.0	0.0	10	NA	10	NA	Include	Include	No	63.0		
25-Jan-2019	9:45:00 AM	9:45:00 AM	10	Fri 25-Jan-2019 10:00	Day-time	0	62.1	0.0	11	Mostly Cloudy	11	Mostly Cloudy	Include	Include	No	62.1	63	
25-Jan-2019	10:00:00 AM	10:00:00 AM	10	Fri 25-Jan-2019 10:00	Day-time	0	62.6	0.0	11	Mostly Cloudy	11	Mostly Cloudy	Include	Include	No	62.6	63	
25-Jan-2019	10:15:00 AM	10:15:00 AM	10	Fri 25-Jan-2019 10:00	Day-time	0	62.3	0.0	11	Mostly Cloudy	11	Mostly Cloudy	Include	Include	No	62.3	63	
25-Jan-2019	10:30:00 AM	10:30:00 AM	10	Fri 25-Jan-2019 10:00	Day-time	0	62.4	0.0	11	Mostly Cloudy	11	Mostly Cloudy	Include	Include	No			

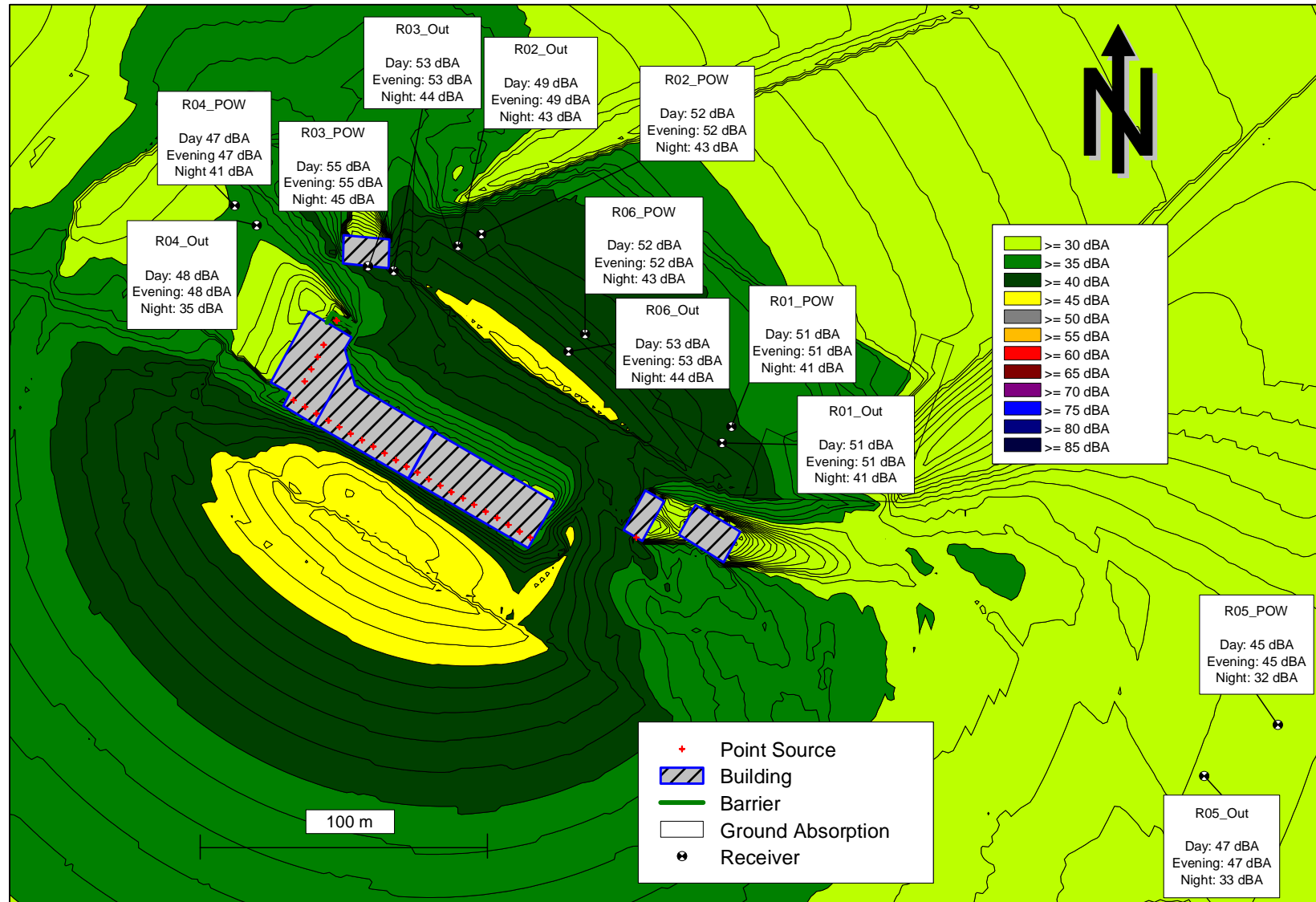
Date	Interval Ending (DST)	Interval Ending (LST)	For Weather Lookup		Time Period (DST)	Overload	Sound Pressure Levels		Enviro Canada Weather Station 1		Enviro Canada Weather Station 2		Wind Exclusion > 20kph		Condition Exclusion		Exclude Data due to Weather	Valid Measurements of Sound Pressure Levels L _{Eq-15min} (dBA)	Rolling 1 hr Leq		
							Round +Hour (LST)	Date/Time (LST)	L _{Eq} (dBA)	L90	Ottawa Airport Wind Speed (kph)	Weather Conditions									
			DAY	EVENING															NIGHT		
			25-Jan-2019	10:45:00 AM			10:45:00 AM	11	Fri 25-Jan-2019 11:00	Day-time	0	63.0	0.0	21	NA	21	NA	Exclude	Include	Yes	
25-Jan-2019	11:00:00 AM	11:00:00 AM	11	Fri 25-Jan-2019 11:00	Day-time	0	63.5	0.0	21	NA	21	NA	Exclude	Include	Yes						
25-Jan-2019	11:15:00 AM	11:15:00 AM	11	Fri 25-Jan-2019 11:00	Day-time	0	64.4	0.0	21	NA	21	NA	Exclude	Include	Yes						
25-Jan-2019	11:30:00 AM	11:30:00 AM	11	Fri 25-Jan-2019 11:00	Day-time	0	64.7	0.0	21	NA	21	NA	Exclude	Include	Yes						
25-Jan-2019	11:45:00 AM	11:45:00 AM	12	Fri 25-Jan-2019 12:00	Day-time	0	64.4	0.0	29	Blowing Snow	29	Blowing Snow	Exclude	Exclude	Yes						

Appendix D – Noise Contours and Sound Power level Calculations

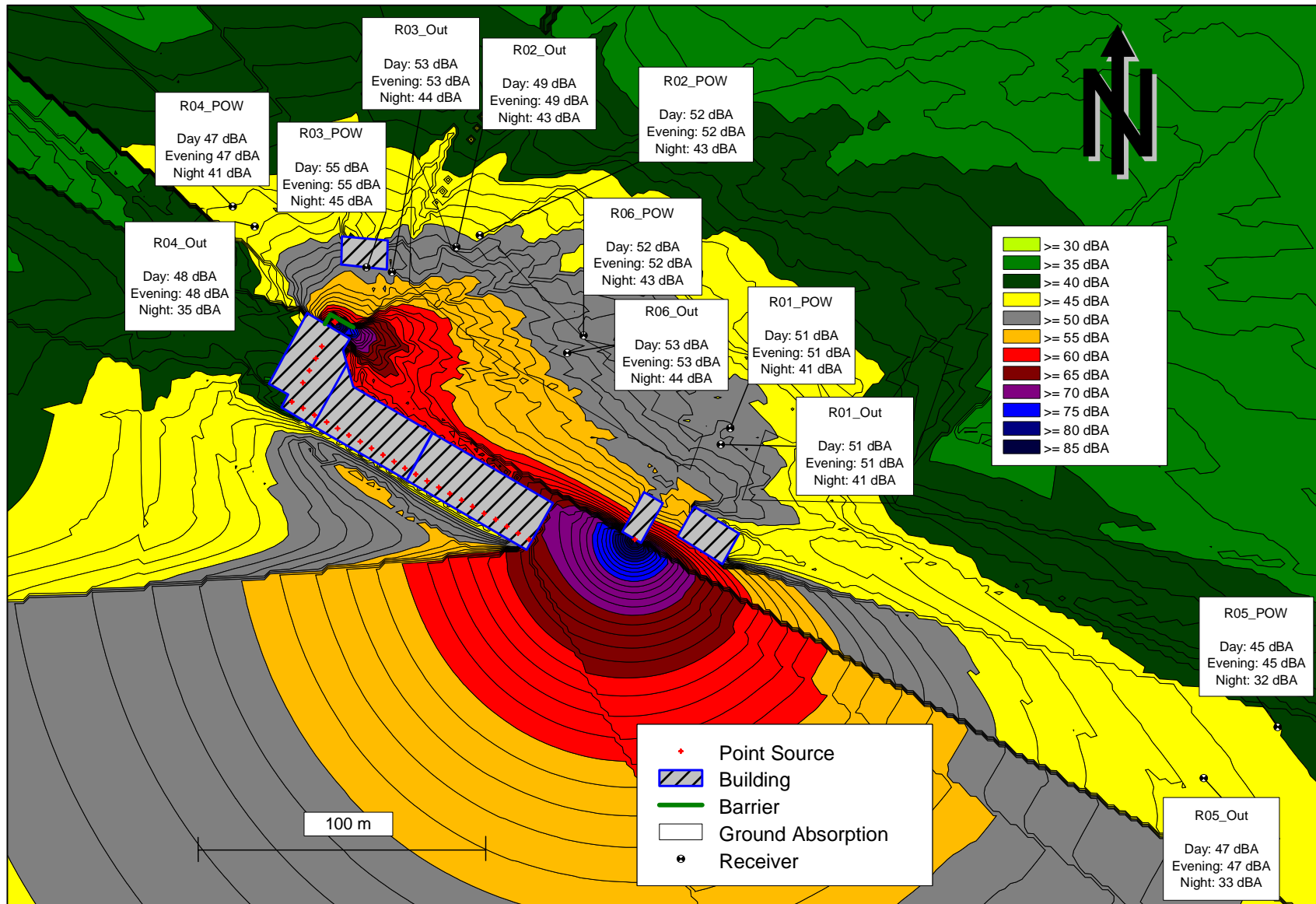
With Truck Noise Barrier - Day/Evening Noise Contours - 1.5 Metre Contour Height



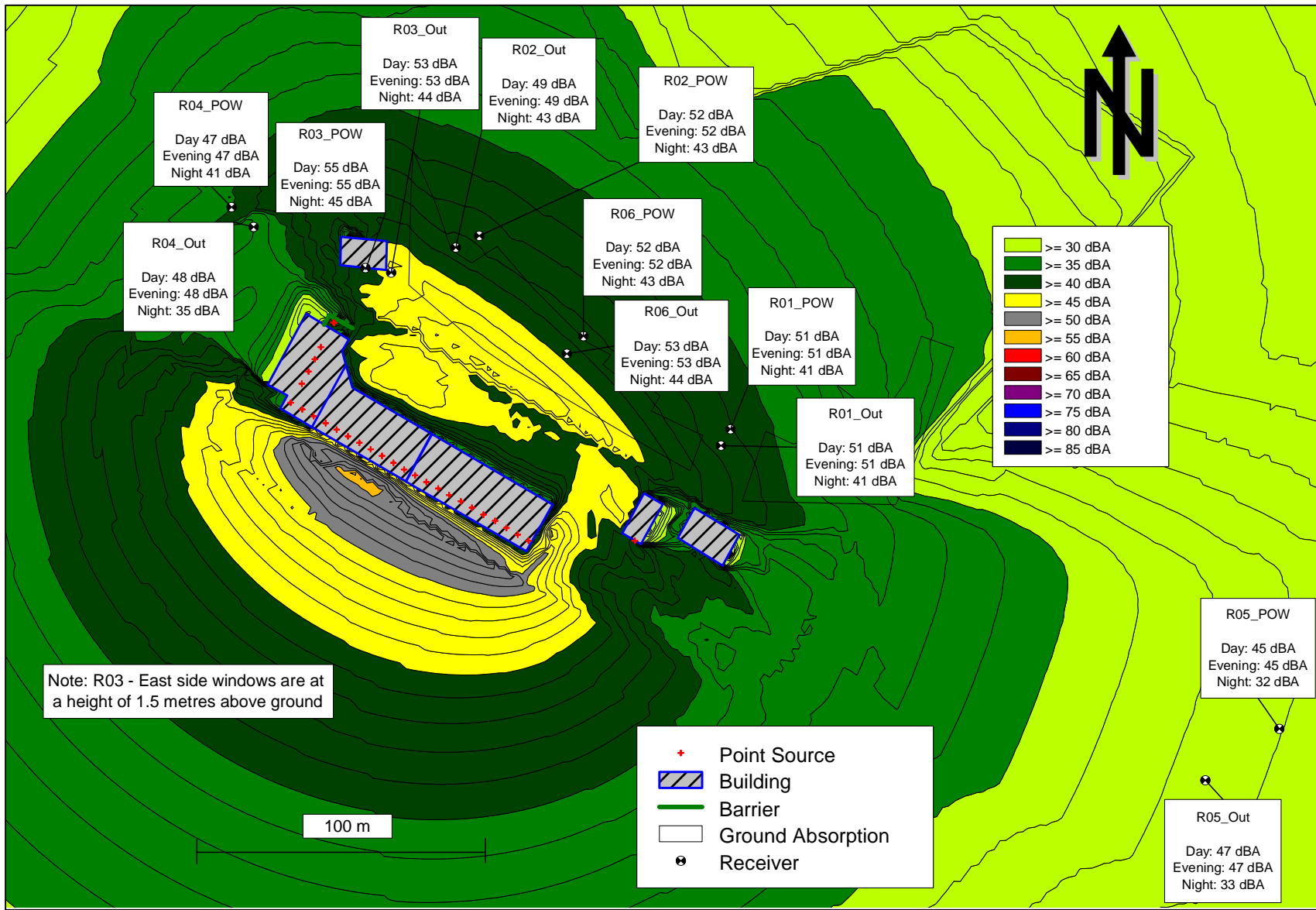
With Truck Noise Barrier - Night Noise Contours - 1.5 Metre Contour Height



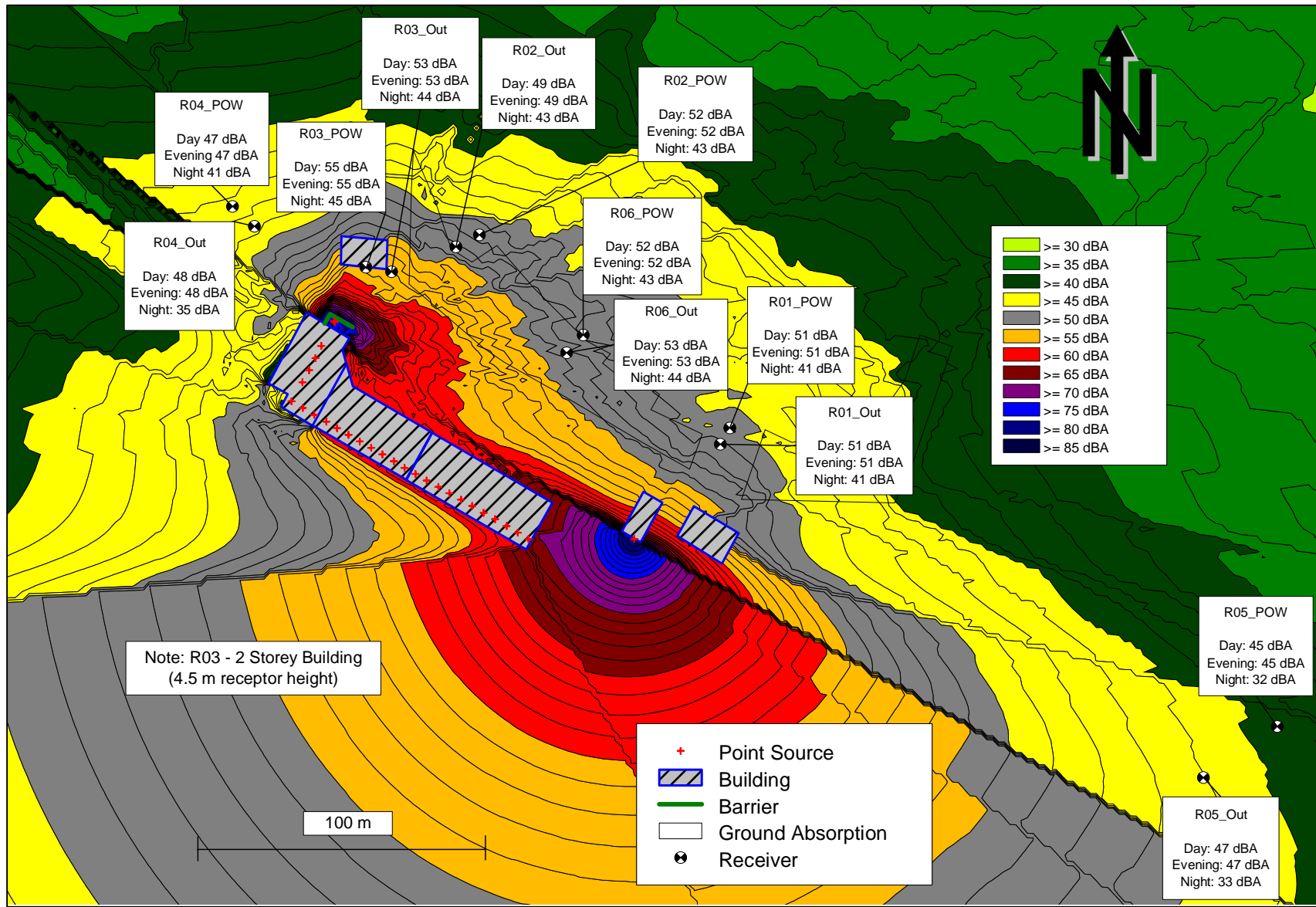
With Truck Noise Barrier - Day/Evening Noise Contours - 4.5 Metre Contour Height



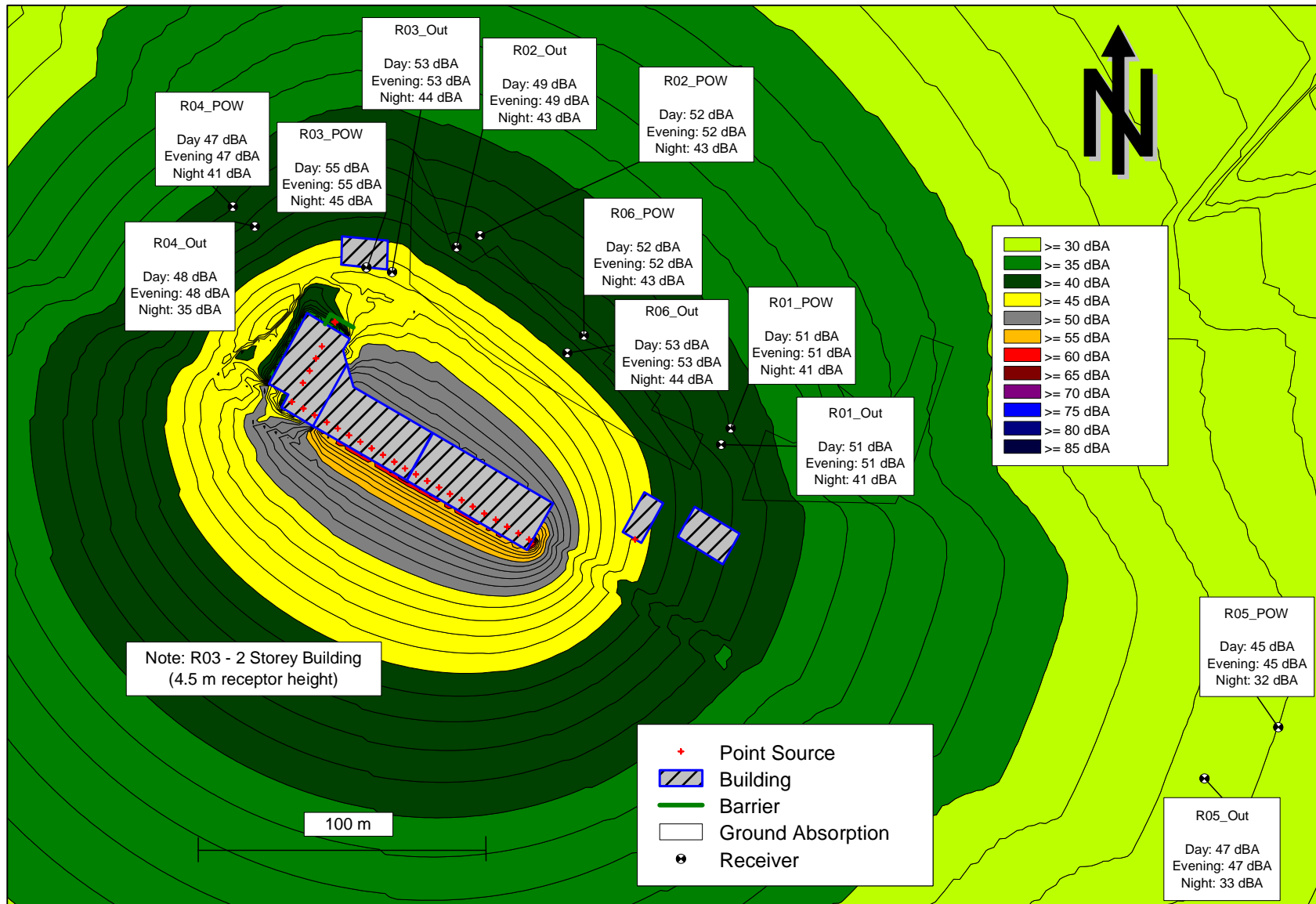
With Truck Noise Barrier - Night Noise Contours - 4.5 Metre Contour Height



With Truck Noise Barrier - Day/Evening Noise Contours - 7.5 Metre Contour Height



With Truck Noise Barrier - Night Noise Contours - 7.5 Metre Contour Height



Measurement Date	N/A	Last Updated	December 13, 2018
Project Name	Heritage Hills - Shell Station		
Project Code	60546152		
Staff	BB		

4 DataType = 4

TABLE C1

SOUND POWER LEVEL PREDICTIONS BASED ON CALCULATIONS

Sheet # ⁽¹⁾	Source ID	Source Tag	Source Description	Wvd ⁽²⁾	Calculated L _{eq} in Octave Bands [Hz]																Dir Type ⁽⁴⁾	Angle ⁽⁵⁾	Sound Pressure Level Corrections/Adjustments																												Source Power/Intensity Level Calculations																				NOTES			
															misc Corrections in dB								Corrected/Adjusted L _{eq} ⁽⁶⁾												Sound Power Lw or Sound Intensity L _w ⁽¹²⁾										Overall Lw/Ld	Overall dBA	TYPE ⁽¹⁴⁾	Measurement/Source Notes	Source Character ⁽¹⁵⁾	CEN/A IMPORT ⁽¹⁶⁾																								
					31.5	63	125	250	500	1k	2k	4k	8k	Overall Leq	32	63	125	250	500	1k			2k	4k	8k	Aud ⁽⁹⁾	31.5	63	125	250	500	1k	2k	4k	8k	Overall Leq	STYP ⁽⁹⁾	SPLH ⁽¹⁰⁾	Dist ⁽¹¹⁾ (m)	Area ⁽¹²⁾ (m ²)	31.5	63	125	250							500	1k	2k	4k	8k																			
	CWExitMtr	CWExitMtr	Shell car wash exit - With Silencer	Linear	100	106	104	102	108	103	101	98	96	113	0	0	0	0	0	0	0	-19	0	0	0	0	0	0	82	88	86	84	89	85	83	80	78	94	4	50	3.05		99	106	103	101	107	102	100	98	95	112	108	LW(D)	Spectrum taken from previous Shell measurement data - adj to fit provided data	S	1																	
	ReeferTruckCompressor	RTCompressor	Assume 35-175 KW (Bies and Hansen)	Linear	79	83	84	85	86	84	82	78	72	92	0	0	0	0	0	0	0	0	0	0	0	0	0	79	83	84	85	86	84	82	78	72	92	4	50	1.00		87	91	92	93	94	92	90	86	80	100	97	LW(D)	Bies and Hansen - Engineering Noise Control - table 11.6	S	1																		
	IdlingTruck	IdlingTruck	Idling truck noise	Linear	65	72	71	57	63	67	64.8	59	52	76	0	0	0	0	0	0	0	0	0	0	0	0	0	65	72	71	57	63	67	65	59	52	76	4	50	3.80		85	91	91	77	83	86	84	79	71	96	90	LW(D)	From previous project data (Vancouver)	S	1																		

SEE ATTACHED NOTES

Appendix E - Instrumentation

Acoustic Modelling Software:

CadnaA for Windows by Datakustik
Version 2018 MR 1

Noise Measurement Equipment:

Quest SoundPro DL-1, Type 1, Sound Level Meter
Model 4231 Calibrator