

PLANTING NOTES

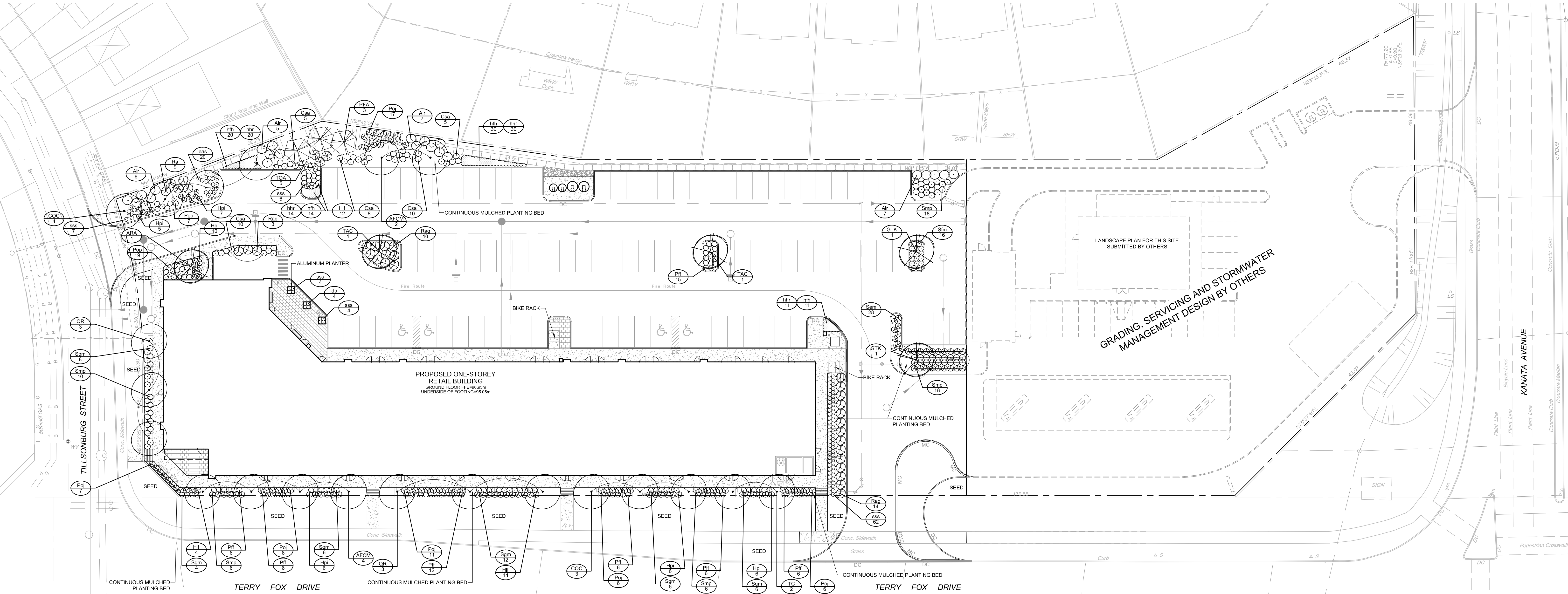
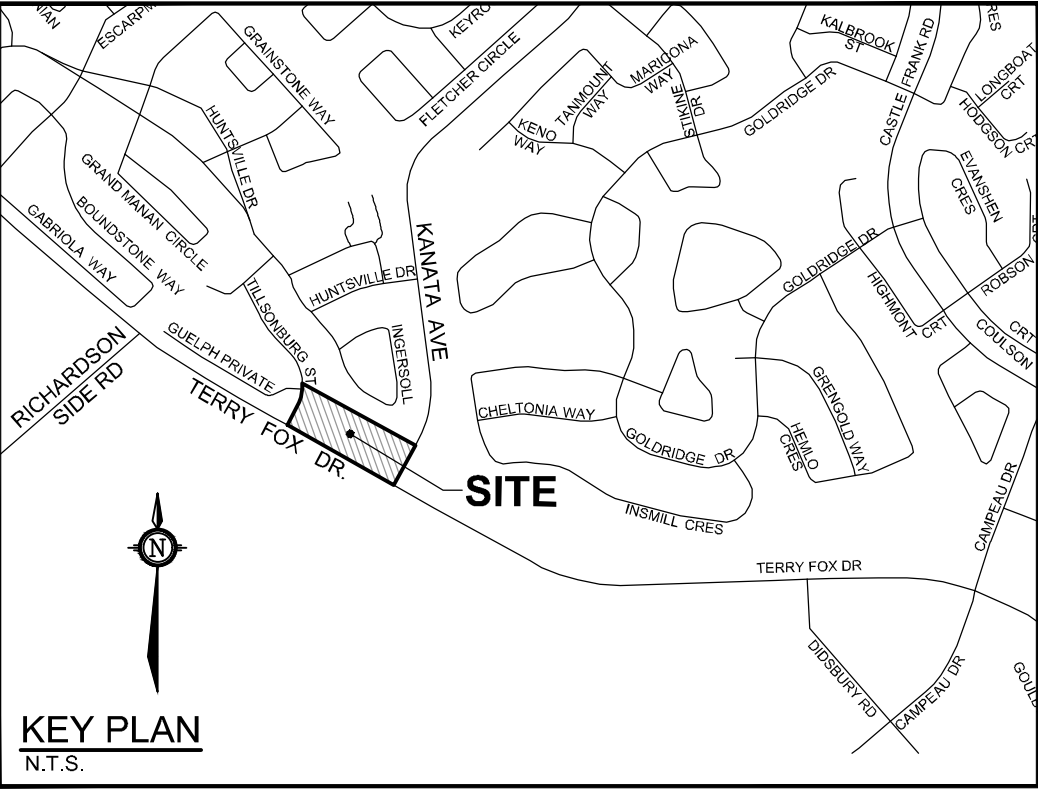
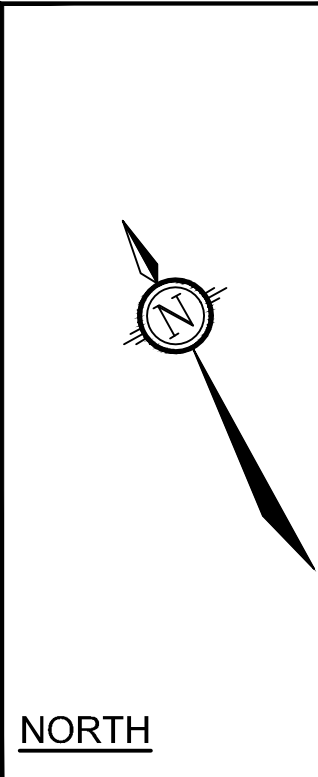
- This drawing shall be read in conjunction with all relevant **Architectural**, Engineering, and related drawings and documents.
- Refer to Engineering Drawings for Grading. Provide drainage as indicated in grading plan. Round all tops and toes of slopes, smoothly. Compact all areas to 95% Standard Proctor Density unless otherwise noted.
- Refer to **Architectural Drawings** for site layout.
- Refer to Engineering Drawings for site servicing.
- Contractor must contact utility companies for locates prior to excavation or planting.
- It is essential to use the plans and details in conjunction with the specifications and notes.
- Existing trees to be retained shall be protected according to the contract detail and specifications.
- Plant material shall be No. 1 Grade and shall comply with Canadian Standards for Nursery Stock (latest edition) published by the Canadian Nursery Landscape Association.
- Use plant material with strong fibrous root system free of disease, defects or injuries, and structurally sound. Use trees with straight trunks, well and characteristically branched for species. Obtain approval from consultant of plant material at source prior to digging. All trees and shrubs shall be container grown, potted, W/B or B/B, as indicated on Plant List. Bare root planting will only be acceptable for certain species and as approved by the Landscape Architect.
- Plant material substitutions shall not be permitted without the written approval from the consultant, **with 48 hours notice**, prior to shipping plant material.
- Plant locations are schematic / approximate only. **Contractor shall stake out locations on site for approval by the Landscape Architect prior to installation.** The illustrated number of plants shown in the Planting Plan supersedes the estimated number in the Plant List. Contractor to report any discrepancies to the Landscape Architect prior to installation. Contractor will assume full responsibility if the Landscape Architect is not notified.
- Shrubs, Perennials, Vines, and Groundcovers shall be planted in a continuous planting bed of **450mm** depth with approved topsoil covered with **75mm** depth shredded bark mulch.
- Ensure trees are thoroughly watered following planting. Monitor material and ensure adequate moisture until acceptance.
- In heavy clay or poorly drained soils, set root ball with root collar 75-100mm higher than finished grade.
- Sod and/or seed areas to receive **100mm** depth topsoil as specified. Sod shall be No. 1 Kentucky Bluegrass Sod grown from minimum mixture of 3 Kentucky Bluegrass cultivars. Quality and source shall comply with Canadian Standards for Nursery Stock, Section 17, (latest edition) published by the Canadian Nursery Landscape Nursery Landscape Association. Unless otherwise specified, turf is to be maintained by the contractor until a second cutting is accepted by the Landscape Architect.
- Apply the following mineral fertilizer unless soil tests show other requirements: Sodded areas - (8-32-16) 8% Nitrogen, 32% Phosphorus, 16% Potash at a rate of 350kg/ha. - Planting Beds - (8-32-16) - 8% Nitrogen, 32% Phosphorus, 16% Potash as per manufacturer specifications.
- Reinstate all areas damaged or disturbed beyond the Limit of Work.
- Refer to specifications:
NOVA 8020 Imported Topsoil
NOVA 8030 Sod
NOVA 8040 Seed and Cover (Hydraulic Seeding)
NOVA 8060 Trees, Shrubs and Groundcover Planting
NOVA 8061 Maintenance of Planting

118133 - Plant List									
KEY	QTY	BOTANICAL NAME	COMMON NAME	SIZE	COND.	SPACING			
Deciduous Trees									
ARA	1	<i>Acer rubrum 'Armstrong'</i>	Armstrong Red Maple	50mm Cal	WB	As Shown			
AFCM	6	<i>Acer x freemanii 'Celzam'</i>	Celebration Maple	50mm Cal	WB	As Shown			
COC	7	<i>Celtis occidentalis 'Chicagoland'</i>	Chicagoland Hackberry	50mm Cal	WB	As Shown			
GTK	2	<i>Gleditsia triacanthos var. inermis 'Skycole'</i>	Skyline Honeylocust	50mm Cal	WB	As Shown			
QR	6	<i>Quercus rubra</i>	Red Oak	50mm Cal	WB	As Shown			
TAC	2	<i>Tilia americana 'Continental Appeal'</i>	Continental Appeal Linden	50mm Cal	WB	As Shown			
TC	2	<i>Tilia cordata 'Greenspire'</i>	Greenspire Linden	50mm Cal	WB	As Shown			
Coniferous Trees									
PFA	3	<i>Picea pungens 'Fat Albert'</i>	Fat Albert Spruce	200cm Ht	WB	As Shown			
TOA	5	<i>Thuja occidentalis - 'Art Boe'</i>	North Pole Cedar	200cm Ht	WB	As Shown			
Deciduous Shrubs									
Alr	25	<i>Amelanchier alnifolia 'Regent'</i>	Saskatoon Serviceberry	60cm Ht	PT	As Shown			
Csa	38	<i>Cornus sericea 'Farrow'</i>	Arctic Fire Dogwood	60cm Ht	PT	As Shown			
Hr	40	<i>Hydrangea paniculata 'Ivovo'</i>	Bobo Dwarf Hydrangea	60cm Ht	PT	As Shown			
Hr	27	<i>Hydrangea paniculata 'SMHPLQ'</i>	Little Quick Fire Hydrangea	60cm Ht	PT	As Shown			
Pff	57	<i>Potentilla fruticosa 'Fargo'</i>	Dakota Sunspot Potentilla	60cm Ht	PT	As Shown			
Pgl	53	<i>Physocarpus opulifolius 'JEFAM'</i>	Amber Jubilee Ninebark	60cm Ht	PT	As Shown			
Pop	26	<i>Physocarpus opulifolius 'Podaras 1'</i>	Gumdrop Burgundy Candy Ninebark	50cm Ht	PT	As Shown			
Ra	5	<i>Rhus aromatica</i>	Fragrant Sumac	60cm Ht	PT	As Shown			
Rag	27	<i>Rhus aromatica 'Gro-Low'</i>	Gro-Low Fragrant Sumac	60cm Ht	PT	As Shown			
Sem	28	<i>Sorbaria sorbifolia 'Sem'</i>	Sem False Spirea	60cm Ht	PT	As Shown			
Sfm	16	<i>Spiraea japonica 'Flaming Mound'</i>	Flaming Mound Spirea	40cm Ht	PT	As Shown			
Sgm	42	<i>Spiraea japonica 'Goldmound'</i>	Goldmound Spirea	60cm Ht	PT	As Shown			
Smp	58	<i>Syringa meyeri 'Palbin'</i>	Dwarf Korean Lilac	60cm Ht	PT	As Shown			
Ornamental Grasses									
db	4	<i>Deschampsia cespitosa 'Bronzeschiele'</i>	Bronze Veil Tufted Hair Grass	1g	PT	As Shown			
eas	20	<i>Elymus arenarius</i>	Blue Lyme Grass	1g	PT	As Shown			
sss	83	<i>Schizachyrium scoparium 'Smoke Signal'</i>	Smoke Signal Little Blue Stem	1g	PT	As Shown			
Perennials									
hfh	75	<i>Heimerocallis 'Frans Hals'</i>	Frans Hals Daylily	1g	PT	45cm O.C			
hhr	75	<i>Heimerocallis 'Happy Returns'</i>	Happy Returns Daylily	1g	PT	45cm O.C			

TREE CONSERVATION REPORT NOTE:
A PRELIMINARY SITE REVIEW, IN PREPARATION FOR THE REQUIRED **TREE CONSERVATION REPORT**,
DETERMINED THAT THERE ARE NO EXISTING TREES ON THIS SITE.

LANDSCAPE LEGEND:

- PROPOSED DECIDUOUS TREE
- PROPOSED CONIFEROUS TREE
- PROPOSED SHRUBS
- PROPOSED PERENNIALS
- SPECIES (SEE PLANT LIST)
- QUANTITY (KEY ##)
- PROPOSED BENCH
- PROPOSED TRASH CONTAINER
- PROPOSED PRECAST PAVERS
- PROPOSED POURED CONCRETE
- PROPOSED RIVERSTONE GROUND COVER



NOTE:
THE POSITION OF ALL POLE LINES, CONDUITS,
WATERMAINS, SEWERS AND OTHER
UNDERGROUND AND OVERGROUND UTILITIES AND
STRUCTURES IS NOT NECESSARILY SHOWN ON
THE CONTRACT DRAWINGS, AND WHERE SHOWN,
THE ACCURACY OF THE POSITION OF SUCH
UTILITIES AND STRUCTURES IS NOT GUARANTEED.
BEFORE STARTING WORK, DETERMINE THE EXACT
LOCATION OF ALL SUCH UTILITIES AND
STRUCTURES AND ASSUME ALL LIABILITY FOR
DAMAGE TO THEM.

NOT FOR
CONSTRUCTION

REVISION			
No.	REVISION	DATE	BY
1	ISSUED FOR SITE PLAN APPROVAL	JAN 25/19	SC

SCALE	
1:300	
0 3 6 9 12	

DESIGN	SC
CHECKED	SC
DRAWN	ML
CHECKED	SC
APPROVED	RGJ

FOR REVIEW ONLY



NOVATECH
Engineers, Planners & Landscape Architects
Suite 200, 240 Michael Cowpland Drive
Ottawa, Ontario, Canada K2M 1P6
Telephone (613) 254-9643
Facsimile (613) 254-5867
Website www.novatech-eng.com

LOCATION CITY OF OTTAWA HERITAGE HILLS RETAIL DEVELOPMENT		PROJECT No.	118133
DRAWING NAME LANDSCAPE PLAN		REV	REV # 1
		DRAWING No.	118133-L1



NOTE: THE POSITION OF ALL POLE LINES, CONDUITS, WATERMAINS, SEWERS AND OTHER UNDERGROUND AND OVERGROUND UTILITIES AND STRUCTURES IS NOT NECESSARILY SHOWN ON THE CONTRACT DRAWINGS, AND WHERE SHOWN, THE ACCURACY OF THE POSITION OF SUCH UTILITIES AND STRUCTURES IS NOT GUARANTEED. BEFORE STARTING WORK, DETERMINE THE EXACT LOCATION OF ALL SUCH UTILITIES AND STRUCTURES AND ASSUME ALL LIABILITY FOR DAMAGE TO THEM.

NOT FOR
CONSTRUCTION

[illegible]

PL AN24x36 DWG - 914 40mmx509 6mm