

LEGEND

	PROPOSED ELEVATION		PROPOSED BUILDING ENTRANCE
	EXISTING ELEVATION		PROPOSED SILT FENCING (OPSD 219.110)
	PROPOSED SWALE ELEVATION		PROPOSED MUD MAT / CONSTRUCTION ENTRANCE
	PROPOSED TOP OF WALL ELEVATION		APPROXIMATE PONDING LIMITS
	PROPOSED BOTTOM OF WALL ELEVATION		EXISTING CONCRETE CURB
	PROPOSED TERRACE ELEVATION		EXISTING SANITARY MANHOLE
	GRADE AND DIRECTION		EXISTING CATCHBASIN MANHOLE
	MAXIMUM 3:1 SLOPE		EXISTING STORM MANHOLE
	EMERGENCY OVERLAND FLOW ROUTE		EXISTING CATCHBASIN
	PROPOSED SANITARY MANHOLE		EXISTING HYDRANT & VALVE
	PROPOSED CATCHBASIN MANHOLE		PROPOSED BARRIER CURB (PER SC1.1)
	PROPOSED STORM MANHOLE		PROPOSED DEPRESSED CURB (PER SC1.1)
	PROPOSED CATCHBASIN		PROPOSED MOUNTABLE CURB (PER SC1.3)
	PROPOSED HYDRANT AND VALVE		DEPRESSED MOUNTABLE CURB (PER SC1.3)
	PROPOSED BARRIER CURB (PER SC1.1)		PROPOSED INLET CONTROL DEVICE
	PROPOSED DEPRESSED CURB (PER SC1.1)		PROPOSED ROOF DRAIN
	PROPOSED MOUNTABLE CURB (PER SC1.3)		PROPOSED FINISHED FLOOR ELEVATION
	DEPRESSED MOUNTABLE CURB (PER SC1.3)		PROPOSED STRUCTURAL RETAINING WALL
	PROPOSED INLET CONTROL DEVICE		
	PROPOSED ROOF DRAIN		
	PROPOSED FINISHED FLOOR ELEVATION		
	PROPOSED STRUCTURAL RETAINING WALL		

GENERAL NOTES:

- COORDINATE AND SCHEDULE ALL WORK WITH OTHER TRADES AND CONTRACTORS.
- DETERMINE THE EXACT LOCATION, SIZE, MATERIAL AND ELEVATION OF ALL EXISTING UTILITIES PRIOR TO COMMENCING CONSTRUCTION. PROTECT AND ASSUME RESPONSIBILITY FOR ALL EXISTING UTILITIES WHETHER OR NOT SHOWN ON THIS DRAWING.
- OBTAIN ALL NECESSARY PERMITS AND APPROVALS FROM THE CITY OF OTTAWA BEFORE COMMENCING CONSTRUCTION.
- BEFORE COMMENCING CONSTRUCTION OBTAIN AND PROVIDE PROOF OF COMPREHENSIVE, ALL RISK AND OPERATIONAL LIABILITY INSURANCE FOR \$5,000,000.00. INSURANCE POLICY TO NAME OWNERS, ENGINEERS AND ARCHITECTS AS CO-INSURED.
- RESTORE ALL DISTURBED AREAS ON-SITE AND OFF-SITE, INCLUDING TRENCHES AND SURFACES ON PUBLIC ROAD ALLOWANCES TO EXISTING CONDITIONS OR BETTER TO THE SATISFACTION OF THE CITY OF OTTAWA AND ENGINEER.
- REMOVE FROM SITE ALL EXCESS EXCAVATED MATERIAL, ORGANIC MATERIAL AND DEBRIS UNLESS OTHERWISE INSTRUCTED BY ENGINEER. EXCAVATE AND REMOVE FROM SITE ANY CONTAMINATED MATERIAL. ALL CONTAMINATED MATERIAL SHALL BE DISPOSED OF AT A LICENSED LANDFILL FACILITY.
- ALL ELEVATIONS ARE GEODETIC.
- REFER TO GEOTECHNICAL REPORT (No. PG4664-1, Revision 1, DATED NOVEMBER 7, 2018), PREPARED BY PATERSON GROUP INC., FOR SUBSURFACE CONDITIONS, CONSTRUCTION RECOMMENDATIONS, AND GEOTECHNICAL INSPECTION REQUIREMENTS. THE GEOTECHNICAL CONSULTANT IS TO REVIEW ON-SITE CONDITIONS AFTER EXCAVATION PRIOR TO PLACEMENT OF THE GRANULAR MATERIAL.
- REFER TO ARCHITECT'S AND LANDSCAPE ARCHITECT'S DRAWINGS FOR BUILDING AND HARD SURFACE AREAS AND DIMENSIONS.
- REFER TO STORMWATER MANAGEMENT REPORT (R-2018-158) PREPARED BY NOVATECH ENGINEERING CONSULTANTS LTD.
- SAW CUT AND KEY GRIND ASPHALT AT ALL ROAD CUTS AND ASPHALT TIE IN POINTS AS PER CITY OF OTTAWA STANDARDS (R10).
- PROVIDE LINE/PARKING PAINTING.

PAVEMENT STRUCTURES:

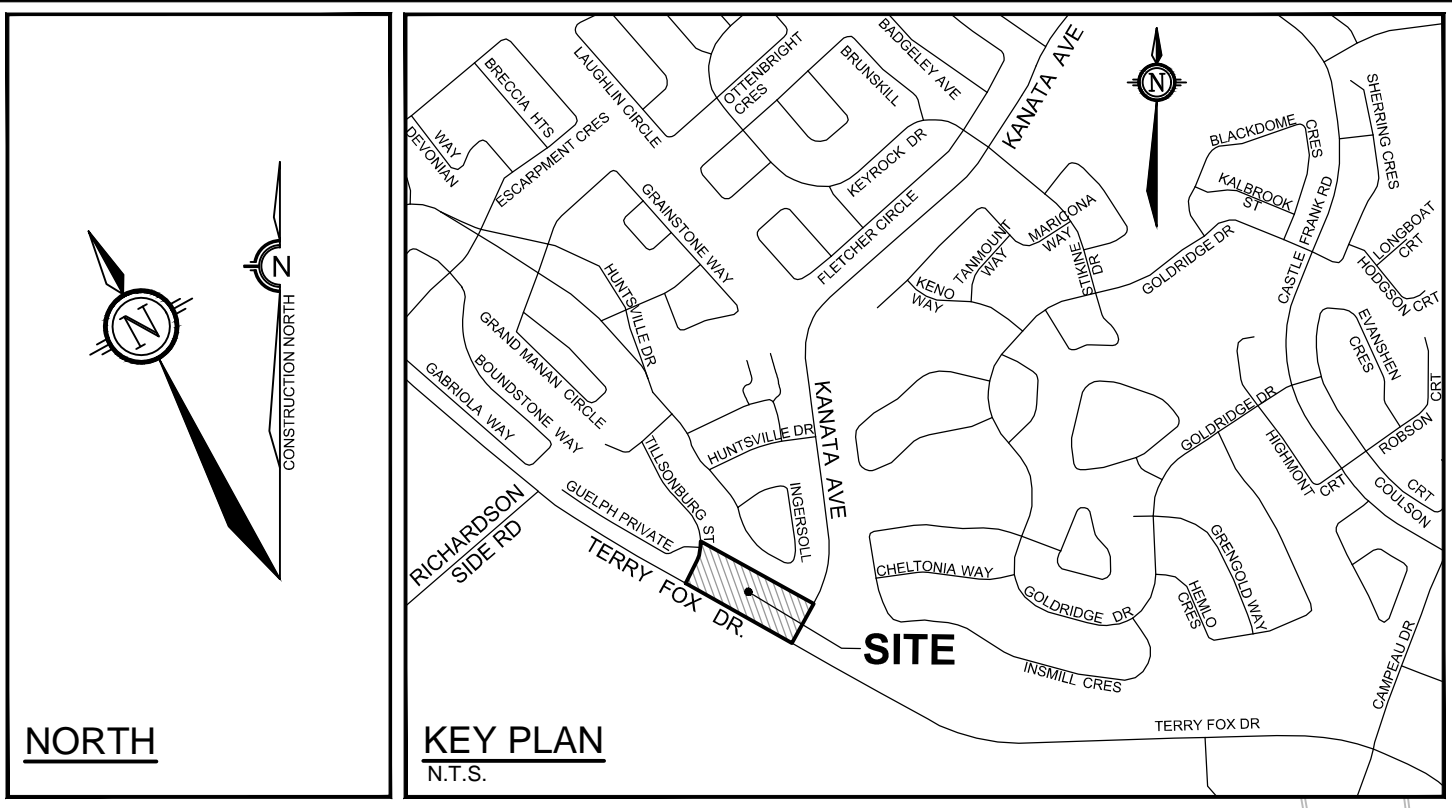
	LIGHT DUTY (NEW PAVEMENT) 50mm HL3 or SUPERPAVE 12.5 150mm GRANULAR "A" 300mm GRANULAR "B" TYPE II ASPHALT GRADE PG 58-34 *INSTALLED PER GEOTECHNICAL REPORT		HEAVY DUTY (NEW PAVEMENT) 50mm HL3 or SUPERPAVE 12.5 50mm HL3 or SUPERPAVE 19.0 150mm GRANULAR "A" 450mm GRANULAR "B" TYPE II ASPHALT GRADE PG 58-34 *INSTALLED PER GEOTECHNICAL REPORT
--	---	--	---

GRADING NOTES:

- ALL TOPSOIL, ORGANIC OR DELETERIOUS MATERIAL MUST BE ENTIRELY REMOVED FROM BENEATH THE PROPOSED PAVED AREAS AS DIRECTED BY THE SITE ENGINEER OR GEOTECHNICAL ENGINEER.
- EXPOSED SUBGRADES IN PROPOSED PAVED AREAS SHOULD BE PROOF ROLLED WITH A LARGE STEEL DRUM ROLLER AND INSPECTED BY THE GEOTECHNICAL ENGINEER PRIOR TO THE PLACEMENT OF GRANULARS.
- ANY SOFT AREAS EVIDENT FROM THE PROOF ROLLING SHOULD BE SUB-EXCAVATED AND REPLACED WITH SUITABLE MATERIAL, THAT IS FROST COMPATIBLE WITH THE EXISTING SOILS AS RECOMMENDED BY THE GEOTECHNICAL ENGINEER.
- THE GRANULAR BASE SHOULD BE COMPACTED TO AT LEAST 98% OF THE STANDARD PROCTOR MAXIMUM DRY DENSITY VALUE. ANY ADDITIONAL GRANULAR FILL USED BELOW THE PROPOSED PAVEMENT SHOULD BE COMPACTED TO AT LEAST 95% OF THE STANDARD PROCTOR MAXIMUM DRY DENSITY VALUE.
- MINIMUM OF 2% GRADE FOR ALL GRASS AREAS UNLESS OTHERWISE NOTED.
- MAXIMUM TERRACING GRADE TO BE 3:1 UNLESS OTHERWISE NOTED.
- ALL GRADIES BY CURBS ARE EDGE OF PAVEMENT GRADES UNLESS OTHERWISE INDICATED.
- ALL CURBS SHALL BE BARRIER CURB (150mm) UNLESS OTHERWISE NOTED AND CONSTRUCTED AS PER CITY OF OTTAWA STANDARDS (SC1.1). MOUNTABLE CURBS ARE TO BE PER CITY OF OTTAWA STANDARD (SC1.3).
- REFER TO LANDSCAPE PLAN FOR PLANTING AND OTHER LANDSCAPE FEATURE DETAILS.
- CONTRACTOR TO PROVIDE THE CONSULTANT WITH A GRADING PLAN INDICATING AS-BUILT ELEVATIONS OF ALL DESIGN GRADES SHOWN ON THIS PLAN.

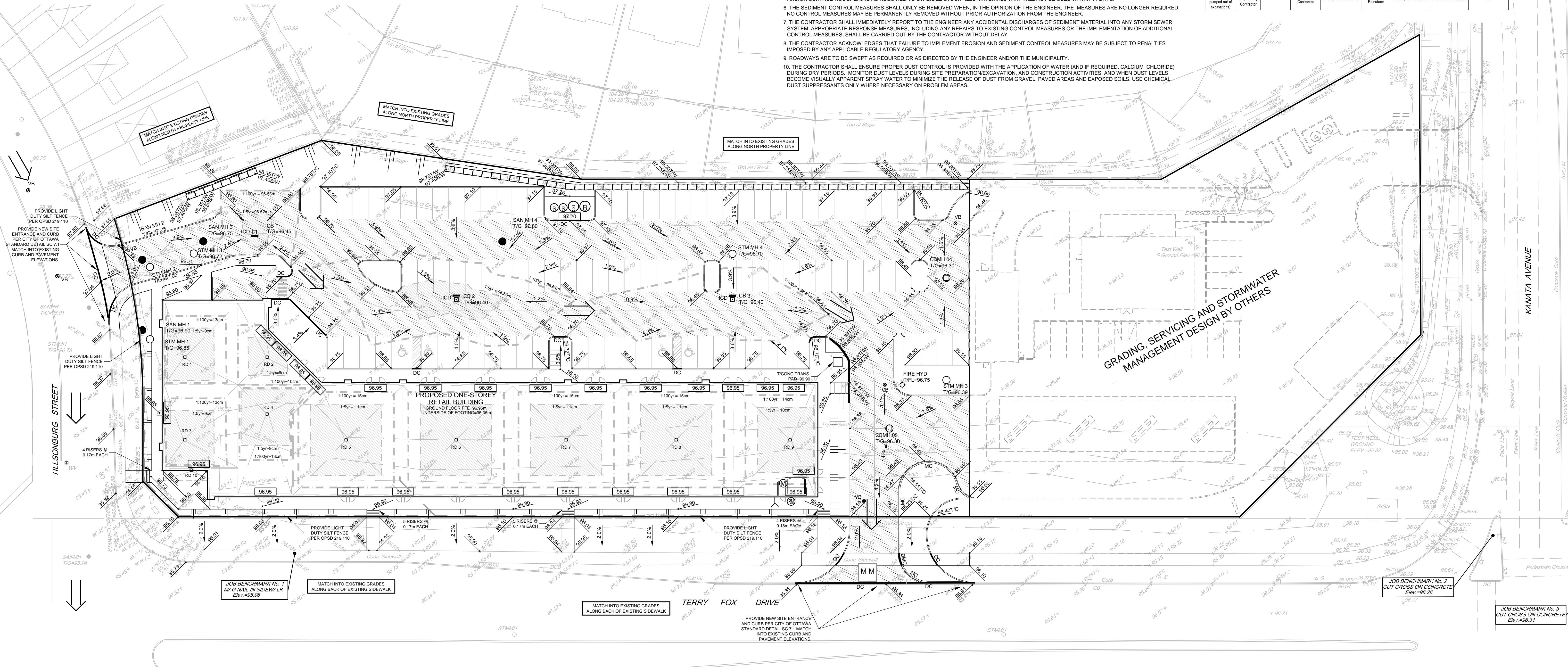
EROSION AND SEDIMENT CONTROL NOTES:

- THE CONTRACTOR SHALL IMPLEMENT BEST MANAGEMENT PRACTICES, TO PROVIDE FOR PROTECTION OF THE AREA DRAINAGE SYSTEM AND THE RECEIVING WATERCOURSE, DURING CONSTRUCTION ACTIVITIES. THE CONTRACTOR ACKNOWLEDGES THAT FAILURE TO IMPLEMENT APPROPRIATE EROSION AND SEDIMENT CONTROL MEASURES MAY BE SUBJECT TO PENALTIES IMPOSED BY ANY APPLICABLE REGULATORY AGENCY.
- ALL EROSION AND SEDIMENT CONTROLS ARE TO BE INSTALLED TO THE SATISFACTION OF THE ENGINEER AND THE CITY OF OTTAWA. THEY ARE TO BE APPROPRIATE TO THE SITE CONDITIONS, PRIOR TO ANY ALTERATION INCLUDING FILLING, GRADING, REMOVAL OF VEGETATION, ETC.) AND DURING ALL PHASES OF SITE PREPARATION AND CONSTRUCTION. THESE PRACTICES ARE TO BE IMPLEMENTED IN ACCORDANCE WITH THE CURRENT BEST MANAGEMENT PRACTICES FOR EROSION AND SEDIMENT CONTROL AND SHOULD INCLUDE AS A MINIMUM THOSE MEASURES INDICATED ON THE PLAN.
 - EROSION AND SEDIMENT CONTROL MEASURES WILL BE IMPLEMENTED DURING CONSTRUCTION IN ACCORDANCE WITH THE "GUIDELINES ON EROSION AND SEDIMENT CONTROL FOR URBAN CONSTRUCTION SITES" (GOVERNMENT OF ONTARIO, MAY 1987). THE CONTRACTOR SHALL BE SOLELY RESPONSIBLE FOR MEETING ALL REGULATORY AGENCY REQUIREMENTS.
 - TO PREVENT SURFACE EROSION FROM ENTERING ANY STORM SEWER SYSTEM DURING CONSTRUCTION, FILTER CLOTH WILL BE PLACED UNDER GRATES OF NEARBY CATCHBASINS AND STRUCTURES. A LIGHT DUTY SILT FENCE BARRIER WILL ALSO BE INSTALLED AROUND THE CONSTRUCTION AREA (WHERE APPLICABLE). THESE CONTROL MEASURES WILL REMAIN IN PLACE UNTIL CONSTRUCTION IS COMPLETE.
 - TO LIMIT EROSION; MINIMIZE THE AMOUNT OF EXPOSED SOILS AT ANY GIVEN TIME, RE-VEGETATE EXPOSED AREAS AND SLOPES AS SOON AS POSSIBLE AND PROTECT EXPOSED SLOPES WITH NATURAL OR SYNTHETIC MULCHES.
 - FOR MATERIAL STOCKPILING; MINIMIZE THE AMOUNT OF EXPOSED MATERIALS AT ANY GIVEN TIME; APPLY TEMPORARY SEEDING, TARPS, COMPACTION AND/OR SURFACE ROUGHENING AS REQUIRED TO STABILIZE STOCKPILED MATERIALS THAT WILL NOT BE USED WITHIN 14 DAYS.
 - THE SEDIMENT CONTROL MEASURES SHALL ONLY BE REMOVED WHEN, IN THE OPINION OF THE ENGINEER, THE MEASURES ARE NO LONGER REQUIRED. NO CONTROL MEASURES MAY BE PERMANENTLY REMOVED WITHOUT PRIOR AUTHORIZATION FROM THE ENGINEER.
 - THE CONTRACTOR SHALL IMMEDIATELY REPORT TO THE ENGINEER ANY ACCIDENTAL DISCHARGES OF SEDIMENT MATERIAL INTO ANY STORM SEWER SYSTEM. APPROPRIATE RESPONSE MEASURES, INCLUDING ANY REPAIRS TO EXISTING CONTROL MEASURES OR THE IMPLEMENTATION OF ADDITIONAL CONTROL MEASURES, SHALL BE CARRIED OUT BY THE CONTRACTOR WITHOUT DELAY.
 - THE CONTRACTOR ACKNOWLEDGES THAT FAILURE TO IMPLEMENT EROSION AND SEDIMENT CONTROL MEASURES MAY BE SUBJECT TO PENALTIES IMPOSED BY ANY APPLICABLE REGULATORY AGENCY.
 - ROADWAYS ARE TO BE SWIFT AS REQUIRED OR AS DIRECTED BY THE ENGINEER AND/OR THE MUNICIPALITY.
 - THE CONTRACTOR SHALL ENSURE PROPER DUST CONTROL IS PROVIDED DURING THE APPLICATION OF WATER (AND IF REQUIRED, CALCIUM CHLORIDE) DURING DRY PERIODS. MONITOR DUST LEVELS DURING SITE PREPARATION/EXCAVATION, AND CONSTRUCTION ACTIVITIES, AND WHEN DUST LEVELS BECOME VISUALLY APPARENT SPRAY WATER TO MINIMIZE THE RELEASE OF DUST FROM GRAVEL, PAVED AREAS AND EXPOSED SOILS. USE CHEMICAL DUST SUPPRESSANTS ONLY WHERE NECESSARY ON PROBLEM AREAS.



Erosion and Sediment Control Responsibilities:

ESC Measure	Symbol	Specification	Installation Responsibility	During Construction Inspection Frequency	After Construction Prior to Final Acceptance Approval to Remove	Removal Responsibility	After Final Acceptance Inspection/Maintenance Responsibility
Silt Fence		OPSD 219.110	Developer's Contractor	Weekly (as a minimum)	Consultant	Developer's Contractor	N/A
Filter Fabric		Location as Indicated in ESC Note #3	Developer's Contractor	Weekly (as a minimum)	Consultant	Developer's Contractor	N/A
Mud Mat		Drawing Details	Developer's Contractor	Weekly (as a minimum)	Consultant	Developer's Contractor	N/A
Dust Control		Location as Required Around Site	Developer's Contractor	Weekly (as a minimum)	Consultant	Developer's Contractor	N/A
Stabilized Material Stockpiling		Location as Required by Contractor	Developer's Contractor	Weekly (as a minimum)	Consultant	Developer's Contractor	N/A
Sediment Basin (for flows being pumped out of excavations)		Location as Required by Contractor	Developer's Contractor	After Every Rainstorm	Developer's Contractor	Developer's Contractor	N/A



NOTE:
THE POSITION OF ALL POLE LINES, CONDUITS, WATERMAINS, SEWERS AND OTHER UNDERGROUND AND OVERGROUND UTILITIES AND STRUCTURES IS NOT NECESSARILY SHOWN ON THE CONTRACT DRAWINGS, AND WHERE SHOWN, THE ACCURACY OF THE POSITION OF SUCH UTILITIES AND STRUCTURES IS NOT GUARANTEED. BEFORE STARTING WORK, DETERMINE THE EXACT LOCATION OF ALL SUCH UTILITIES AND STRUCTURES AND ASSUME ALL LIABILITY FOR DAMAGE TO THEM.

NOT FOR CONSTRUCTION

OWNER INFORMATION
7873794 CANADA INC.
43 AURIGA DRIVE, 2ND FLOOR,
NEPEAN, ONTARIO, K2E 7Y8
DENNIS LAURIN
PHONE: (613) 656-0672
dennis.laurin@laurin.ca

No.	REVISION	DATE	BY
2	ISSUED FOR SITE PLAN APPROVAL	JAN 25/19	MS
1	ISSUED FOR DESIGN COORDINATION	JAN 17/19	MS

SCALE
1:300
0 3 6 9 12

DESIGN	FOR REVIEW ONLY
SM / MS	
CHECKED	MS
DRAWN	SM
CHECKED	SM / MS
APPROVED	MS



NOVATECH
Engineers, Planners & Landscape Architects
Suite 200, 240 Michael Cowpland Drive
Ottawa, Ontario, Canada K2M 1P6
Telephone (613) 254-9643
Facsimile (613) 254-5867
Website www.novatech-eng.com

LOCATION CITY OF OTTAWA - 471 TERRY FOX DRIVE HERITAGE HILLS RETAIL PLAZA	PROJECT No. 118133
DRAWING NAME GRADING AND EROSION & SEDIMENT CONTROL PLAN	REV #2
	DRAWING No. 118133-GR
	# XXXXX