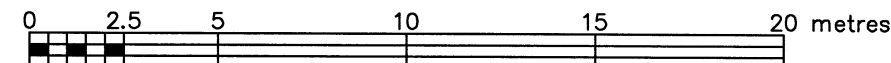


TOPOGRAPHIC PLAN OF SURVEY OF

PART OF LOT 14 REGISTERED PLAN 457 CITY OF OTTAWA

FARLEY, SMITH & DENIS SURVEYING LTD. 2018

Scale 1: 200



Metric Note

Distances and coordinates on this plan are in metres and can be converted to feet by dividing by 0.3048.

Bearing Note

Bearings are astronomic and are referred to the Easterly limit of Grenon Avenue having a bearing of N 21° 58' 05" W as shown on Plan 4R-19561.

Elevation Notes

- 1. Elevations shown are geodetic.
2. It is the responsibility of the user of this information to verify that the job benchmark has not been altered or disturbed and that its relative elevation and description agrees with the information shown on this drawing.

Utility Notes

- 1. This drawing cannot be accepted as acknowledging all of the utilities and it will be the responsibility of the user to contact the respective utility authorities for confirmation.
2. Only visible surface utilities were located.
3. Underground utility data derived from City of Ottawa utility sheet reference: 1555 (Sheet 1 & 2 of 3).
4. Sanitary and storm sewer grades and inverts were derived/compiled from: Field measurement and City of Ottawa Utility Plans.
5. A field location of underground plant by the pertinent utility authority is mandatory before any work involving breaking ground, probing, excavating etc.

Notes & Legend

Legend table with symbols and descriptions for Survey Monument Found, Survey Monument Set, Standard Iron Bar, Short Standard Iron Bar, Iron Bar, Plan 4R-19561, Plan 5R-3632, Plan by (1692) Dated June 15, 2011 (file No. 149-11), Farley, Smith & Denis Surveying Ltd., Annis, O'Sullivan & Vollebek Ltd, Not To Scale, Water Shut off Valve, Water Valve, Lamp Post, Utility Pole & Light Standard, Utility Pole, Cable Kiosk, Hydro Kiosk, Sanitary Sewer Manhole, Storm Sewer Manhole, Invert, Invert Per City of Ottawa Utility Plans, Top of Curb Elevation, Top of Wall Elevation, Top of Foundation Elevation, Diameter, North Invert Elevation, South Invert Elevation, East Invert Elevation, West Invert Elevation, Denotes Existing Building, Overhead Wires, Approximate Location of Underground Bell, Approximate Location of Underground Hydro, Approximate Location of Underground Gas, Deciduous Tree, Coniferous Tree.

Surveyor's Certificate

- I certify that:
1. This survey and plan are correct and in accordance with the Surveys Act, the Surveys Act and the Regulations made under them.
2. The survey was completed on the 5th day of December, 2018.

Dec. 21/18 Date

Daniel Robinson Ontario Land Surveyor

FARLEY, SMITH & DENIS SURVEYING LTD.

ONTARIO LAND SURVEYORS CANADA LAND SURVEYORS

190 COLONNADE ROAD, OTTAWA, ONTARIO K2E 7J5 TEL. (613) 727-8226 FAX. (613) 727-1826

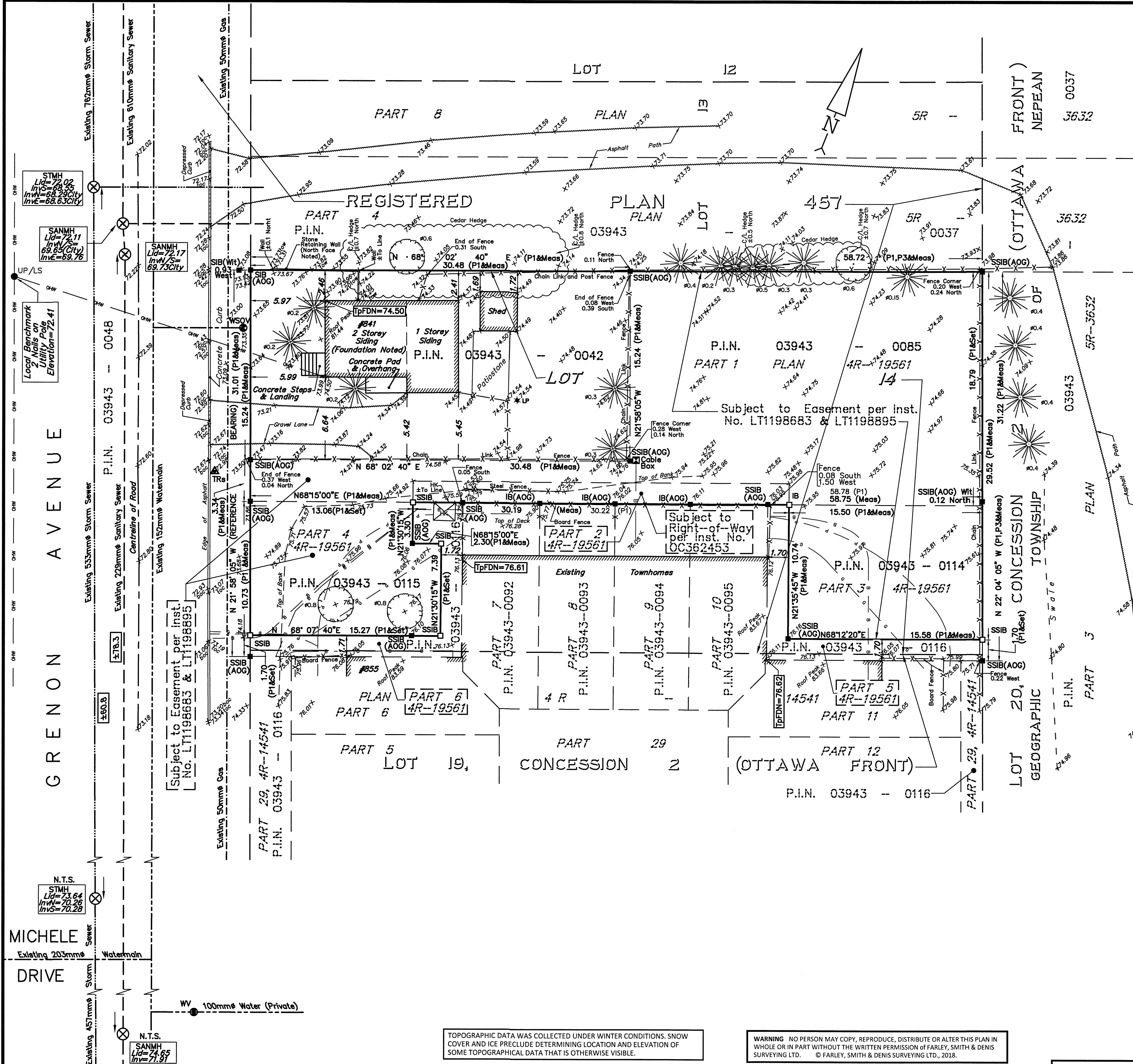
FILE No.: 652-18

TOPOGRAPHIC DATA WAS COLLECTED UNDER WINTER CONDITIONS. SNOW COVER AND ICE PRECLUDE DETERMINING LOCATION AND ELEVATION OF SOME TOPOGRAPHICAL DATA THAT IS OTHERWISE VISIBLE.

WARNING NO PERSON MAY COPY, REPRODUCE, DISTRIBUTE OR ALTER THIS PLAN IN WHOLE OR IN PART WITHOUT THE WRITTEN PERMISSION OF FARLEY, SMITH & DENIS SURVEYING LTD. © FARLEY, SMITH & DENIS SURVEYING LTD., 2018.

December-21-18 9:03:55 AM

TOPO.18X24



STMH Lid=72.02 InvN=68.55 InvE=68.63 City

SANMH Lid=72.11 InvN=69.85 InvE=69.76 City

Local Benchmark 2 Nails on Utility Pole Elevation=72.41

GRENON AVENUE

N.T.S. STMH Lid=73.64 InvN=70.26 InvE=70.28

MICHELE DRIVE

N.T.S. SANMH Lid=74.65 InvN=71.91

FRONT NEPEAN 0037 3632

(OTTAWA) 3632

LOT 20, CONCESSION TOWNSHIP

PART 29, 4R-14541

PART 29, 4R-14541

PART 29, 4R-14541

PART 29, 4R-14541