

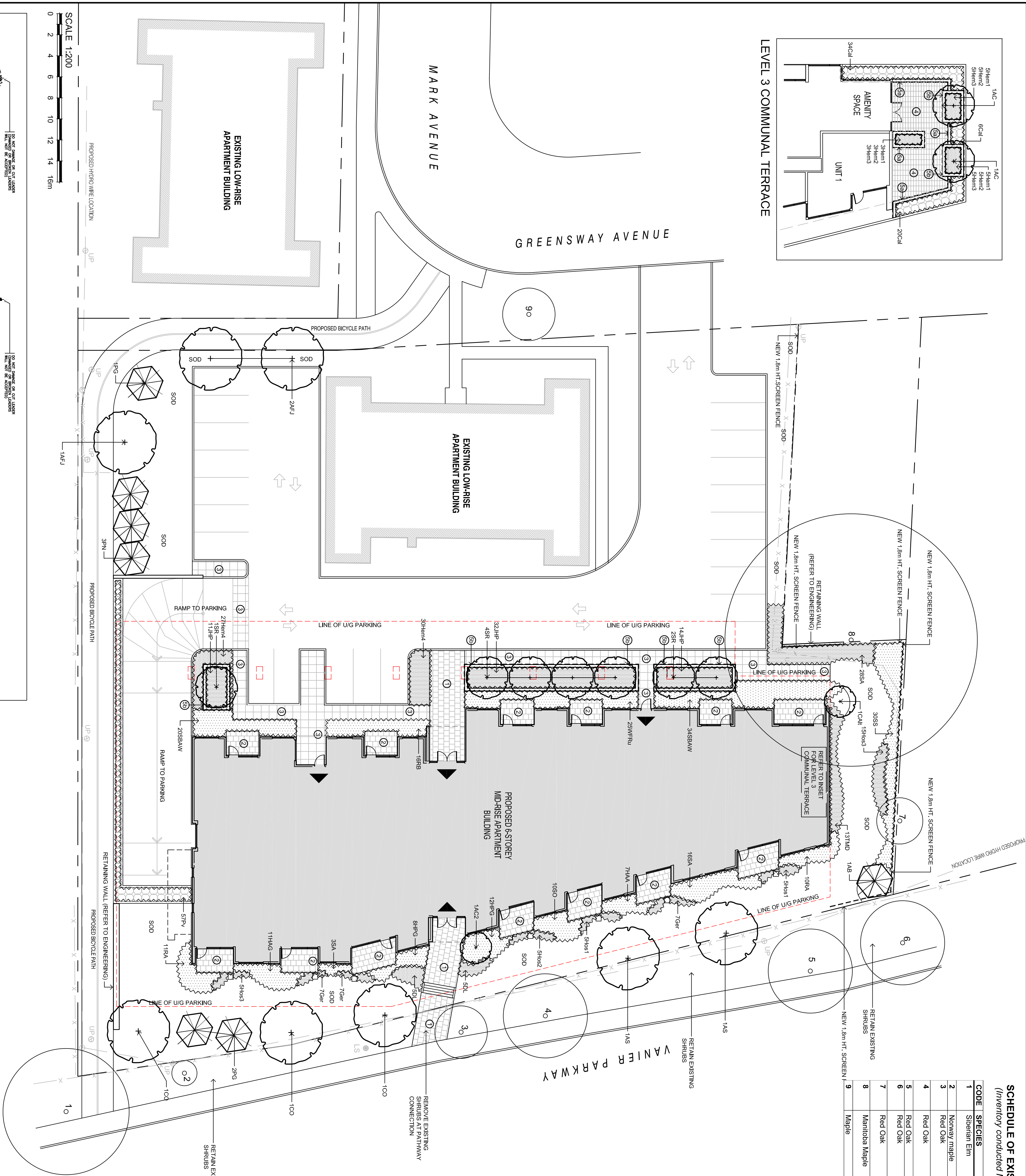
(Inventory conducted May 1, 2018,

CODE	SPECIES	SIZE (diameter cm)	CULTIVATION / TREATMENT / REMARKS
1	Siberian Elm	47	City tree / poor condition - old stem damage - invasive species <b>retain</b> / protect
2	Norway maple	14	City tree / good condition / <b>retain</b> / protect
3	Red Oak	27	City tree / fair condition - asymmetrical crown / <b>retain</b> / protect
4	Red Oak	38	City tree / fair condition - asymmetrical crown / <b>retain</b> / protect
5	Red Oak	36	City tree / good condition / <b>retain</b> / protect
6	Red Oak	34	City tree / fair condition - asymmetrical crown / <b>retain</b> / protect
7	Red Oak	22	Property line / fair condition - asymmetrical crown / <b>retain</b> / protect
8	Manitoba Maple	120	Property line / poor condition - asymmetrical/heaving - invasive species <b>retain</b> / protect
	Maple	22	Good / <b>retain</b> / protect

LEVEL 3 COMMUNAL TERRACE

The plan shows Unit 1 on the left, with a large terrace area labeled 'UNIT 1' and 'AMENITY SPACE'. The terrace is bordered by a '34Ccd' wall on the top left and a '20Ccd' wall on the bottom. The terrace features two large circular tables with chairs, labeled 'T1' and 'T2'. There are also two smaller circular tables with chairs, labeled 'T3' and 'T4'. The terrace is landscaped with '3Shent1', '3Shent2', and '3Shent3' shrubs, and '20Ccd' and '34Ccd' walls. The terrace is also labeled 'TAC' and 'Ecd'. The terrace is bordered by a '34Ccd' wall on the top left and a '20Ccd' wall on the bottom. The terrace features two large circular tables with chairs, labeled 'T1' and 'T2'. There are also two smaller circular tables with chairs, labeled 'T3' and 'T4'. The terrace is landscaped with '3Shent1', '3Shent2', and '3Shent3' shrubs, and '20Ccd' and '34Ccd' walls. The terrace is also labeled 'TAC' and 'Ecd'.

### LEVEL 3 COMMUNAL TERRACE



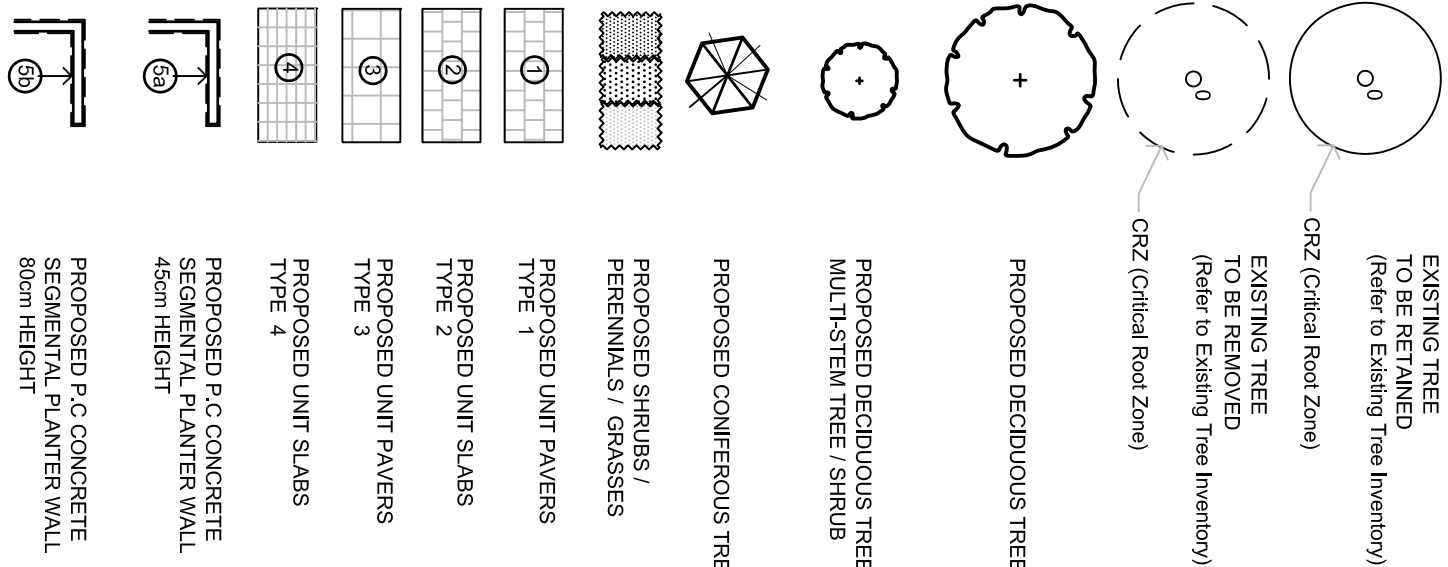
## PLANT MATERIAL SCHEDULE

[illegible]

## GENERAL NOTES

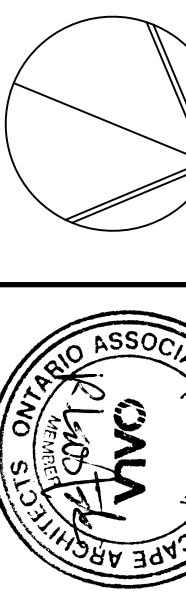
- 1 This drawing shall be read in conjunction with all relevant Architectural, Engineering and related Drawings and Documents.
  - 2 Refer to Engineering Drawings for Grading and Section Details.
  - 3 Refer to Architectural Drawings for Site layout.
  - 4 Contractor shall provide the location(s) for Site layout, services/utilities by consulting Municipal Authorities and utility companies and shall be responsible for adequate protection from damage during construction.
  - 5 The Contractor shall comply with the requirements of the Metric Gauge Specifications for Nursery Stock (latest edition), published by the Canadian Nursery Trades Association.
  - 6 Plant Material locations are **Schematic Approximate only**. Contractor shall stake out locations on site prior to work.
  - 7 Contractor shall acceptance all plant material for a period of one (1) full year from the date of final acceptance.
  - 8 **Perennials and Ornamental Grasses** shall be planted in a continuous prepared bed of 450mm depth planting soil mix covered over with 75mm depth composted pine mulch in 10x10 grid. (WITH DEEP CONTROL FABRIC).
  - 9 Stake to specify location 125mm (approx). Stak shall be No. 1 quality conforming to the Canadian Nursery Stock Grower Specification.
  - 10 Reestablish all areas damaged or disturbed beyond the limit of Work.
  - 11 Plant Material substitutions shall not be permitted without written approval of the Municipality.
  - 12 Provide **protection for existing trees** to be retained. Install fencing to Critical Root Zone (CRZ) of each tree over groups of trees (if close together). No excavation, filling, storage of materials, disposal of chemicals or waste, vehicle traffic or other activity which could cause damage to the protected area. Compensation shall take place within limits of trees are removed to accommodate construction work. They shall be done in accordance with accepted horticultural practices.
  - 13 Where root systems become exposed due to excavation resulting in damaged roots and provide temporary protection and backfill is undertaken. Keep roots moist at all times.
  - 14 Contractual uses of retaining walls or grades around trees are to be modified. Root feed all existing trees around construction.
  - 15 Contractor shall advise Consultant a minimum of 48hrs prior to starting landscape work and any required Field Reviews.
- THIS PLAN HAS BEEN PREPARED FOR MUNICIPAL SITE PLAN APPROVAL ONLY, AND MAY NOT BE USED FOR ANY OTHER PURPOSE.**

## LEGEND / SYMBOL



NOT FOR CONSTRUCTION

4.	MAY23/18	ISSUE FOR SPA	
3.	MAY23/18	ISSUE FOR COORDINATION / REVIEW (3)	
2.	MAY18/18	ISSUE FOR COORDINATION / REVIEW (2)	
1.	APR. 2018	ISSUE FOR COORDINATION / REVIEW	
no.	date	revision	



Contractor shall check and verify all dimensions on site and report all errors and/or omissions to the Consultant.  
Work to be done in accordance with all applicable codes and by-laws.  
Do not scale Drawing.  
Copyright reserved. This Drawing is the exclusive property of Leveltek Consultants Inc.  
and shall not be used without consent.

Consultant

MANOR PARK  
MANAGEMENT

263 GREENSWAY AVENUE

LANDSCAPE PLAN

Drawn	Date	Drawing No. <b>L1.01</b>
<b>MGB</b>	<b>MAR 2018</b>	
Scale <b>1:200</b>	Project No. <b>1141</b>	