

GENERAL NOTES

LEGEND

PROPERTY LINE

▬

BUILDING

▬

PROPOSED RETAINING WALL

▬

CONCRETE PAVING

▬

HEAVY DUTY PAVEMENT

▬

TREE PROTECTION FENCE

▬

FIRE HYDRANT

○

EXISTING TREE TO REMAIN

○

NEW CONIFEROUS TREE

○

NEW DECIDUOUS TREE

○

SHRUBS + PERENNIAL PLANTINGS

○

SOD

○

DEMARCATION FOR PEDESTRIAN CROSSING

○

SWAEE CONNECTION

REVISIONS

NO.	DATE	DESCRIPTION	BY
3	10/26/2018	REVISED FOR SPA	PGF
2	10/11/2017	ISSUED FOR SPA	PGF
1	03/10/2017	ISSUED FOR CLIENT REVIEW	PGF
NO.	DATE	DESCRIPTION	BY

PROJECT / LOCATION :

1375 CLYDE AVENUE
OTTAWA, ONTARIO

CLIENT

DYMON MANAGEMENT

FOTENN
Planning + Design

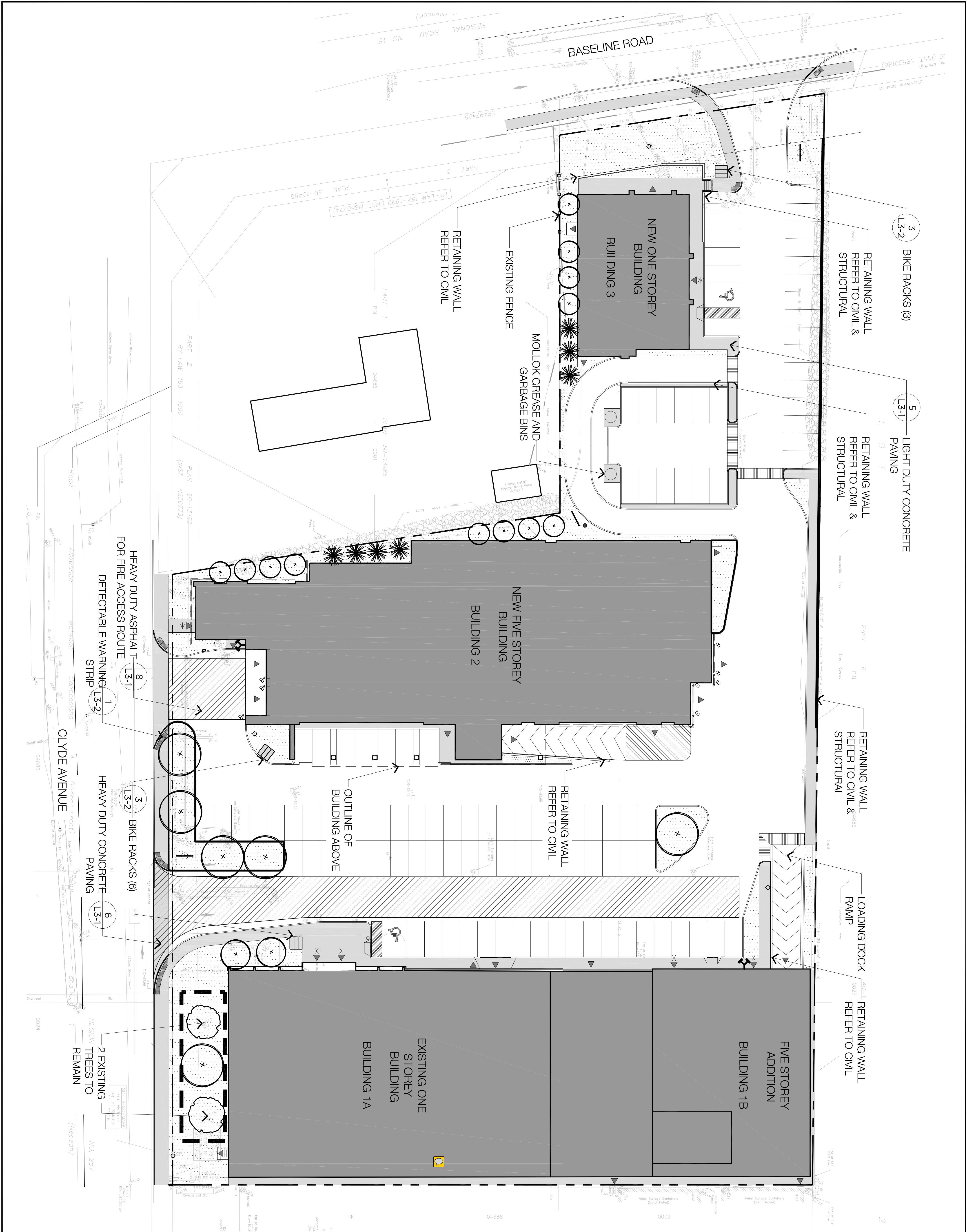
223 McLeod Street, Ottawa ON K2P 0Z8 613.730.5709 www.fotenn.com



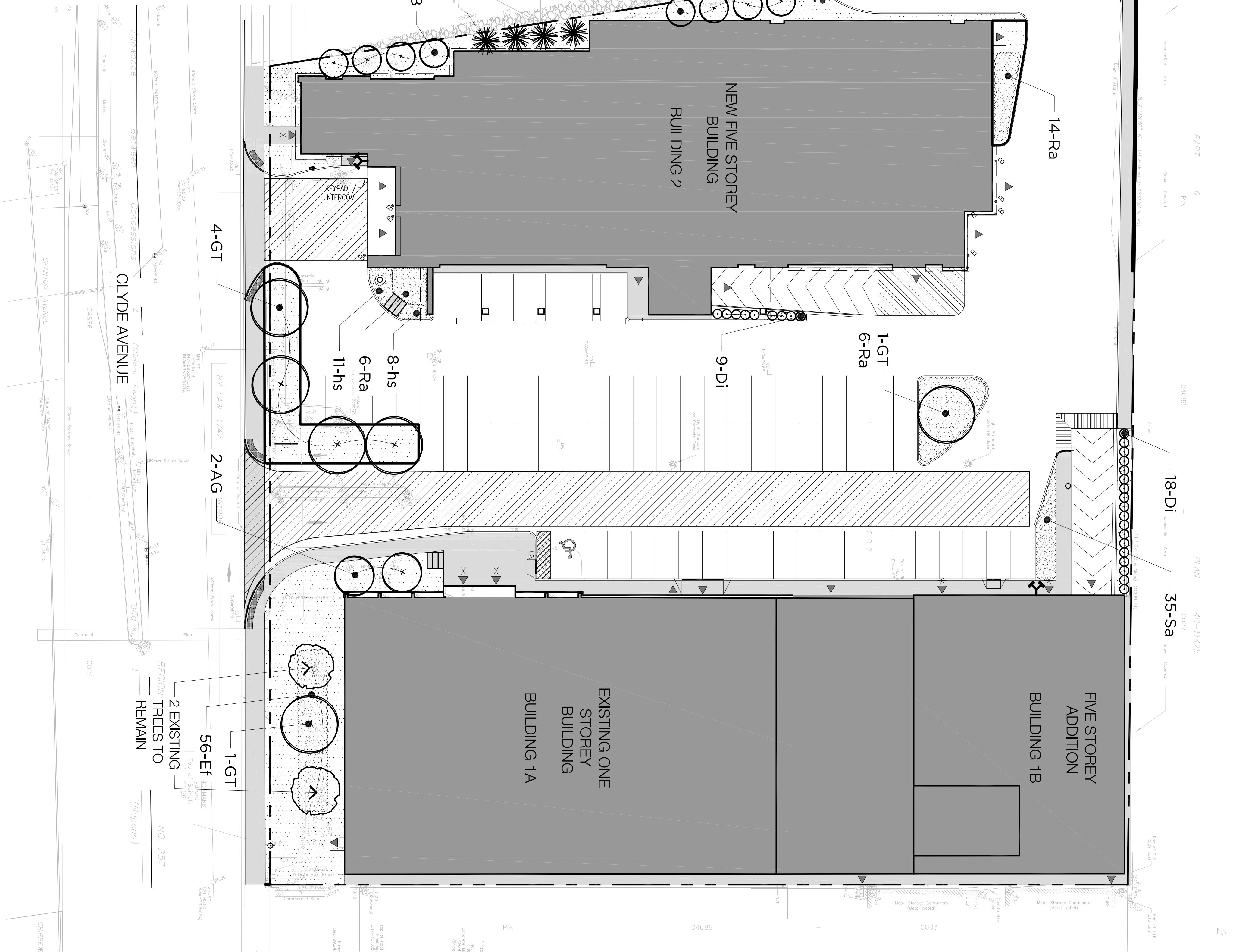
SHEET TITLE

LANDSCAPE PLAN

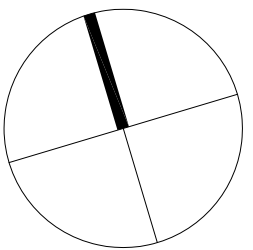
REVIEWED	GH	DRAWING NO.
DRAWN	KZ	
DATE	04 OCT 2017	SHEET NO.
SCALE	1 : 250	L1-1



Plant List					
Key	Qty	Botanical Name	Common Name	Size	Comments
Coniferous Trees					
JV	7	Juniperus virginiana	Eastern Red Cedar	175 cm Height	W.B.
Deciduous Trees					
AG	2	Acer ginnala	Amur Maple	50 mm Caliper	W.B.
GB	12	Ginkgo biloba 'Mayfield'	Mayfield Maidenhair Tree	60 mm Caliper	W.B.
GT	6	Gleditsia triacanthos f. inermis 'Inpocola'	Impatiel Honeylocust	60 mm Caliper	W.B.
Shrubs					
DI	27	Diervilla lonicera	Bush Honeysuckle	2 gal. Pot	POTTED
EI	96	Euonymus fortunei 'Gold Tip'	Gold Tip Euonymus	2 gal. Pot	POTTED
Ra	26	Rhus aromatica 'Gro Low'	Dwarf Aromatic Sumac	2 gal. Pot	POTTED
Sa	85	Spiraea albiflora	Japanese White Spiraea	2 gal. Pot	POTTED
Perennials					
hs	33	Hemerocallis 'Stella D'Oro'	Dwarf Yellow Daylily	1 gal. Pot	POTTED



FOTENN
Planning + Design



REVIEWED	DRAWING NO.
GH	

--	--

DATE	04 OCT 2017	SHEET NO.
------	-------------	-----------

SCALE 1 : 250

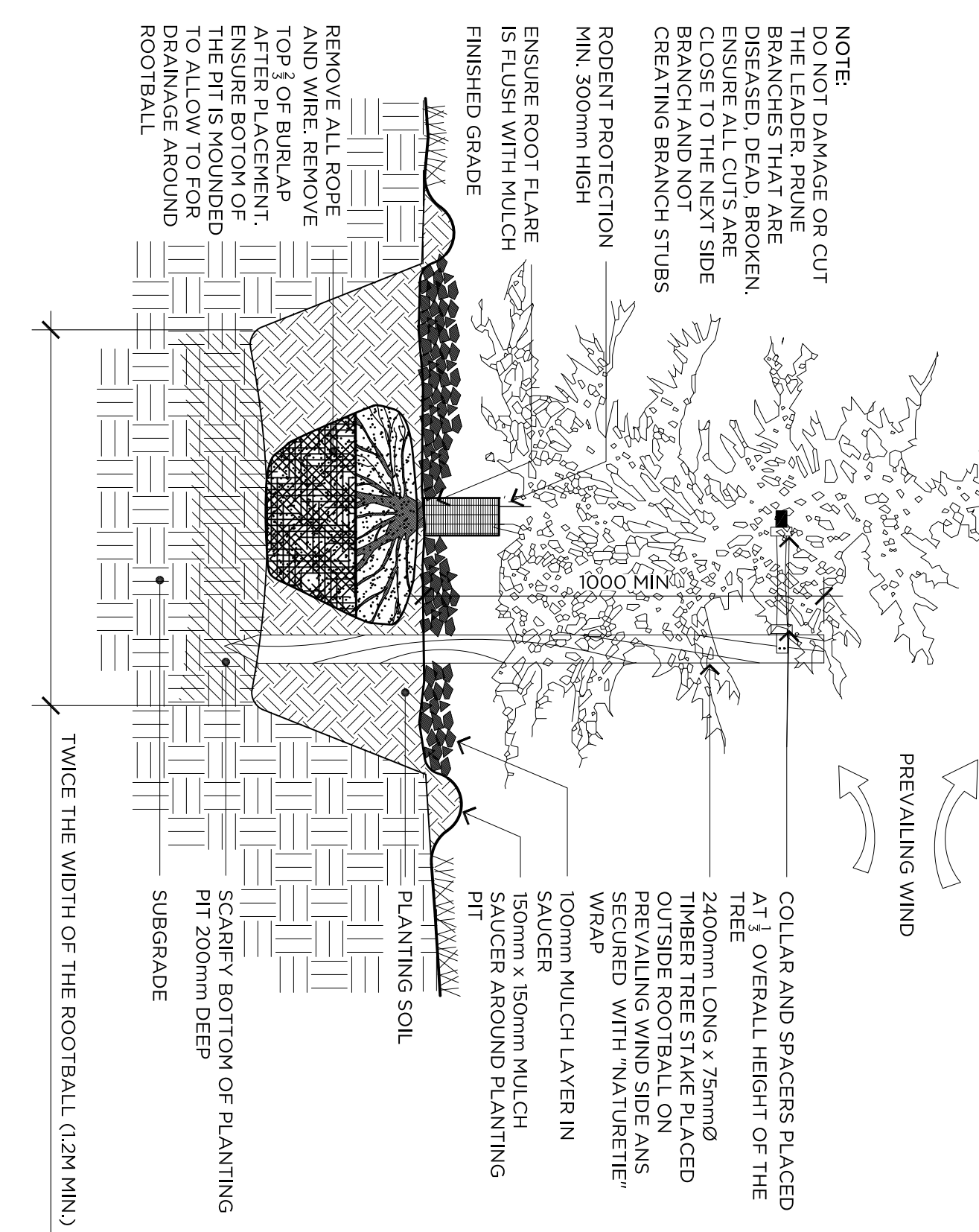
GENERAL NOTES

LEGEND			
REVISIONS			
3	10/06/2018	REVISED FOR SPA	PDF
2	12/11/2017	ISSUED FOR SPA	PDF
1	03/10/2017	ISSUED FOR CLIENT REVIEW	PDF
NO.	DMV	MASTSTONE / PAT SULLANT	FORMAT

3 | SHRUB PLANTING

NTS

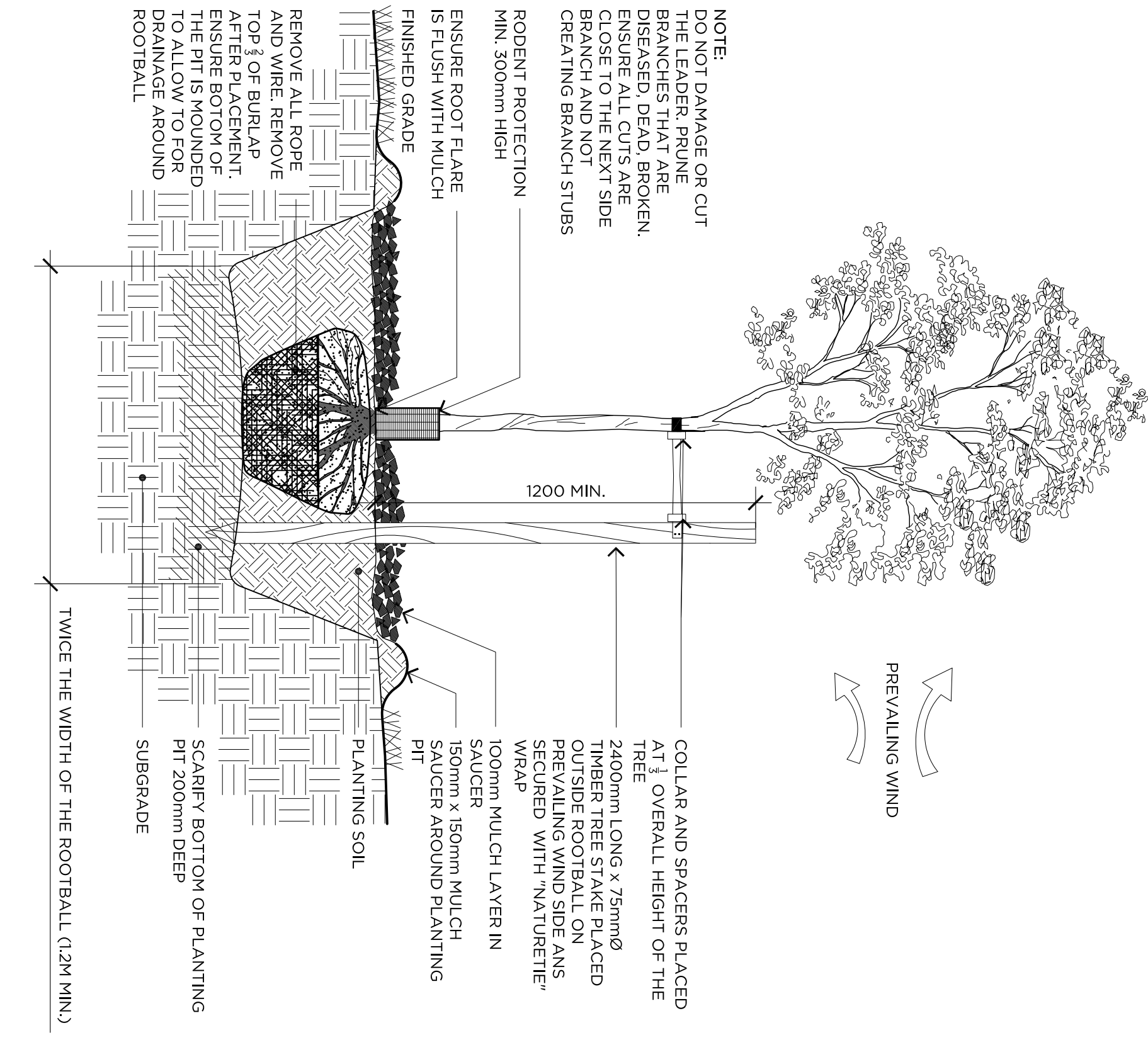
L3-1



2 | CONIFEROUS TREE PLANTING

NTS

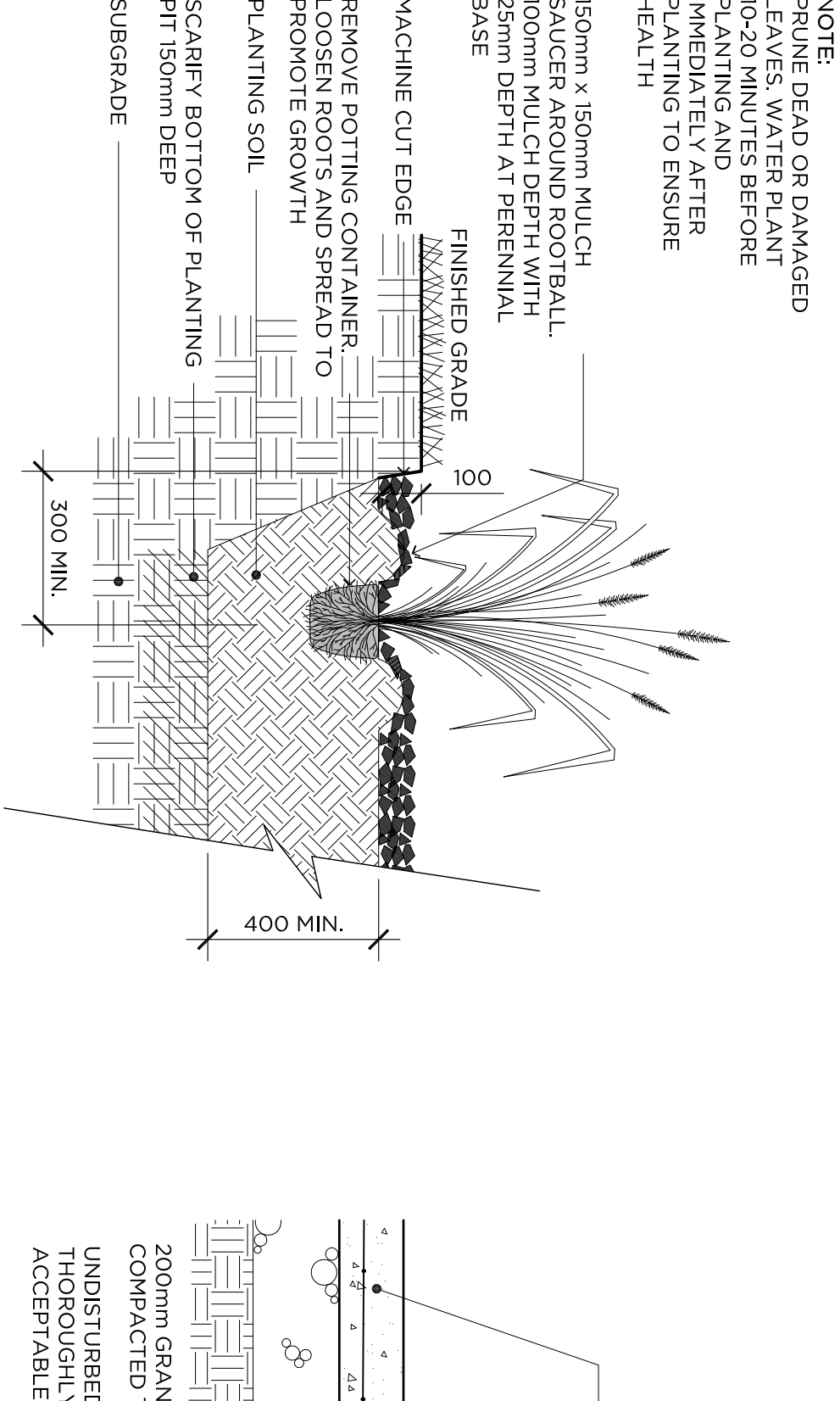
L3-1



1 | DECIDUOUS TREE PLANTING

NTS

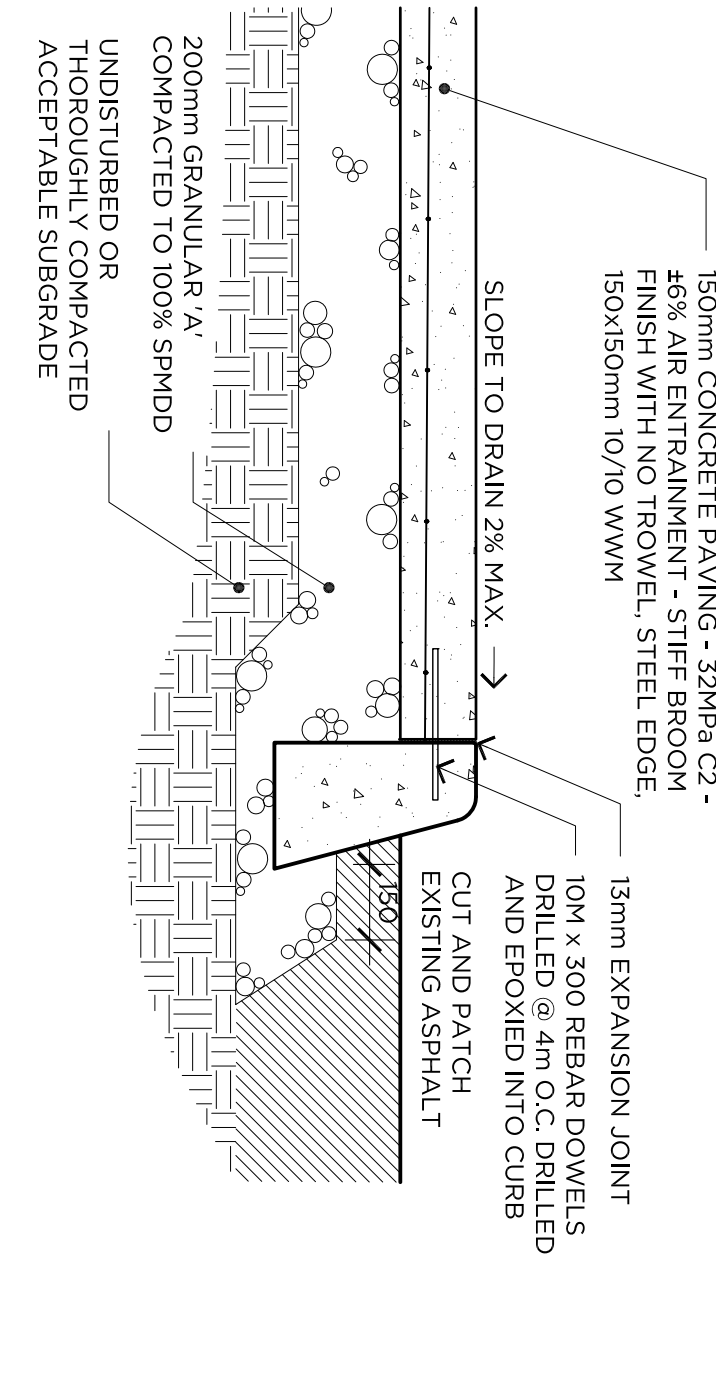
L3-1



5 | LIGHT DUTY CONCRETE PAVING

1:15

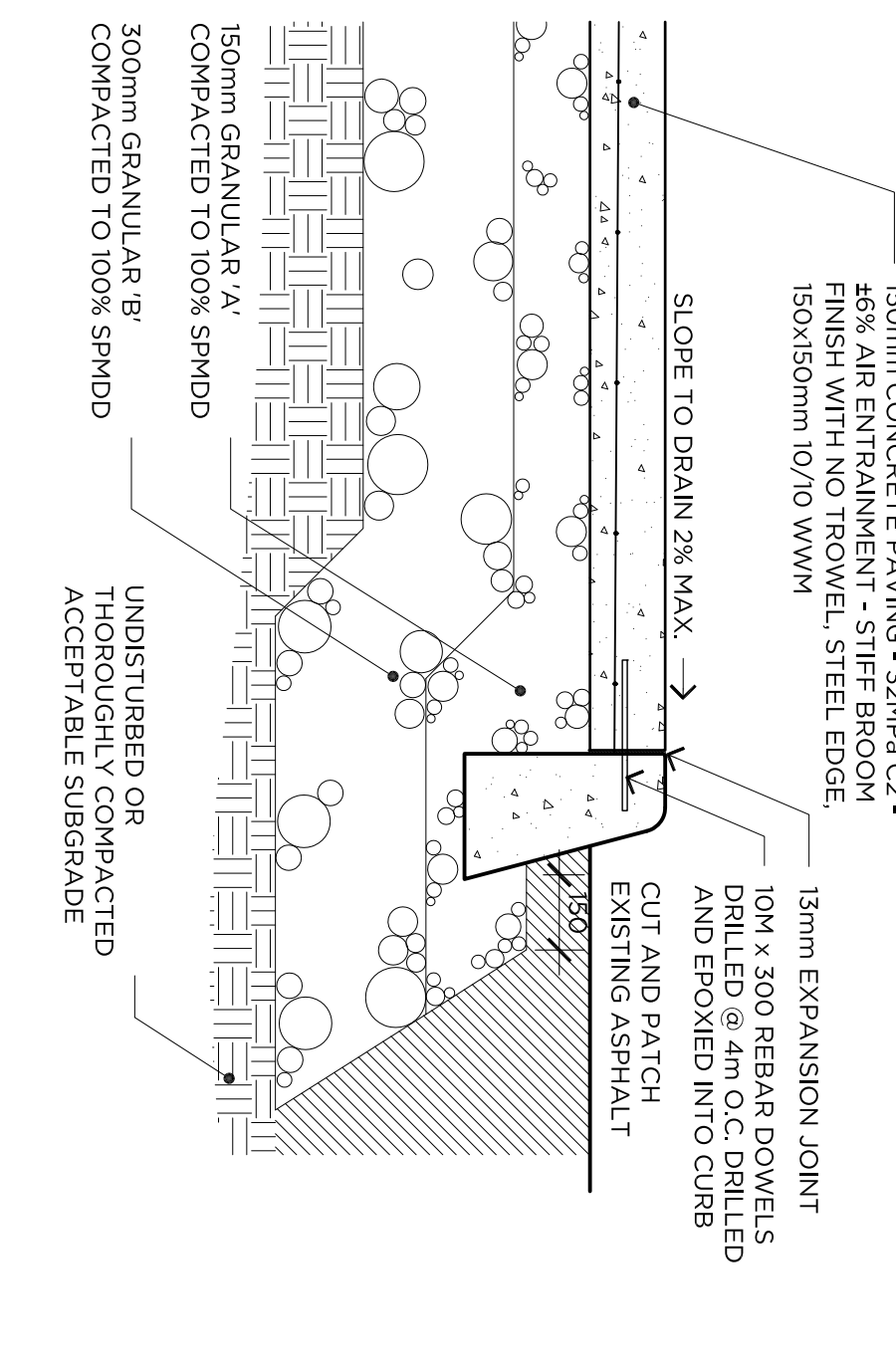
L3-1



6 | HEAVY DUTY CONCRETE PAVING

1:15

L3-1

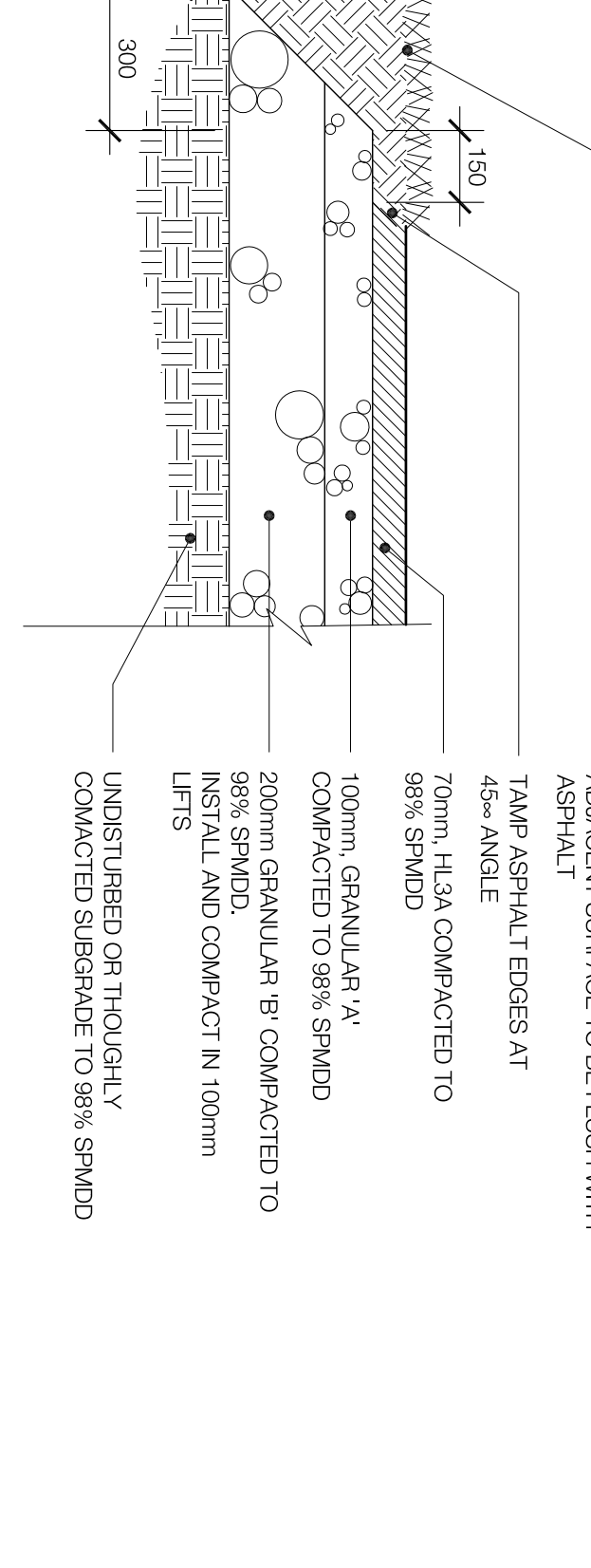


L3-1

4 | PERENNIAL GRASS PLANTING

NTS

L3-1

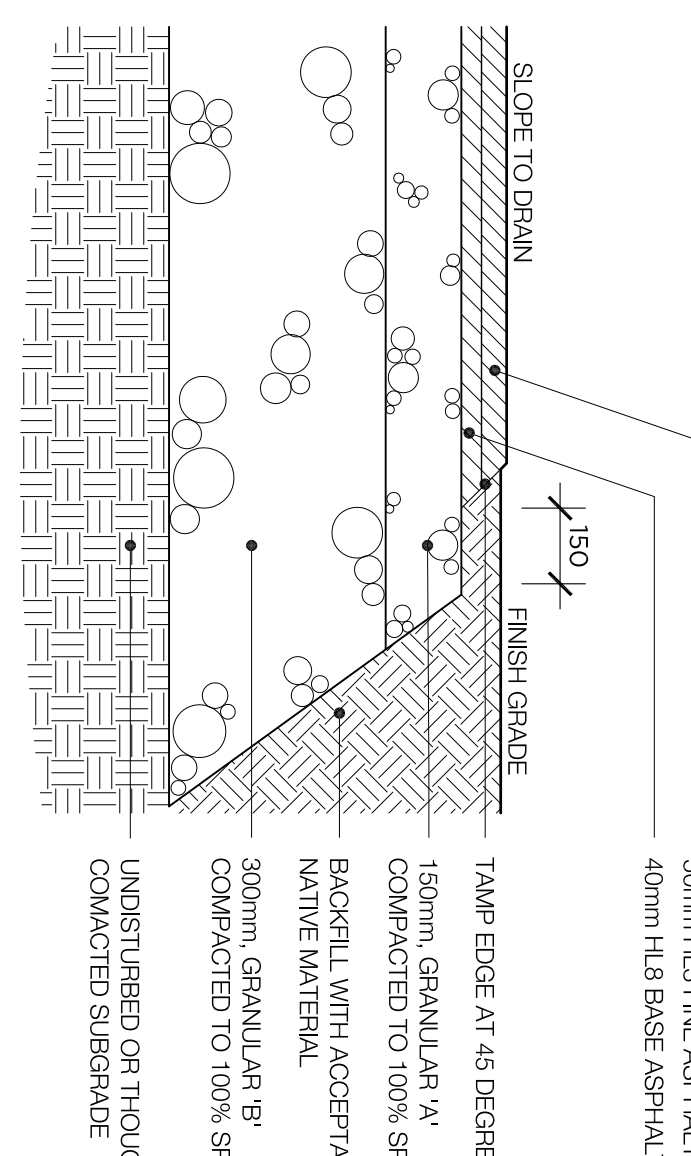


- NOTES:
1. ASPHALT WALKWAYS TO BE CROSS SLOPED TO LOW SIDE @ MAX 2% SLOPE
 2. EDGE OF ASPHALT TO FOLLOW LAYOUT LINES ON L1 & 2. ENSURE LONG FLOWING LINES WITH NO INTERUPTIONS TO HORIZONTAL ADJACENT

7 | LIGHT DUTY ASPHALT PAVING

1:15

L3-1



8 | HEAVY DUTY ASPHALT PAVING

1:15

L3-1

CLIENT

DYMON MANAGEMENT

PROJECT / LOCATION :
1375 CLYDE AVENUE
OTTAWA, ONTARIO

223 McLeod Street, Ottawa ON K2P 0Z8 613.730.5709 www.fotenn.com

FOTENN
Planning + Design



SHEET TITLE

DETAILS

REVIEWED		DRAWING NO.	
	GH		
DRAWN	KZ		
DATE		SHEET NO.	
	04 OCT 2017		L3-1
SCALE		AS NOTED	

GENERAL NOTES

LEGEND

REVISIONS	
3	10/06/2018 REVISED FOR SPA PDF
2	13/11/2017 ISSUED FOR CLIENT REVIEW PDF
1	09/05/2017 MISTAKE / PAIN SALLANT FORMAT

REVISIONS

3	12/04/2018	REISSUED FOR SPA	PDF
---	------------	------------------	-----

2	13/11/2017	ISSUED FOR SPA	PDF
1	03/10/2017	ISSUED FOR CLIENT REVIEW	PDF

PROJECT / LOCATION

1375 GLYDE AVENUE
OTTAWA, ONTARIO

CLIENT

DYMON MANAGEMENT

223 McLeod Street, Ottawa ON K2P 0Z8 613.730.5709 www.folenn.com

613.730.5709 www.fotenn.com

www.fotenn.com

FOTENN

Planning + Design

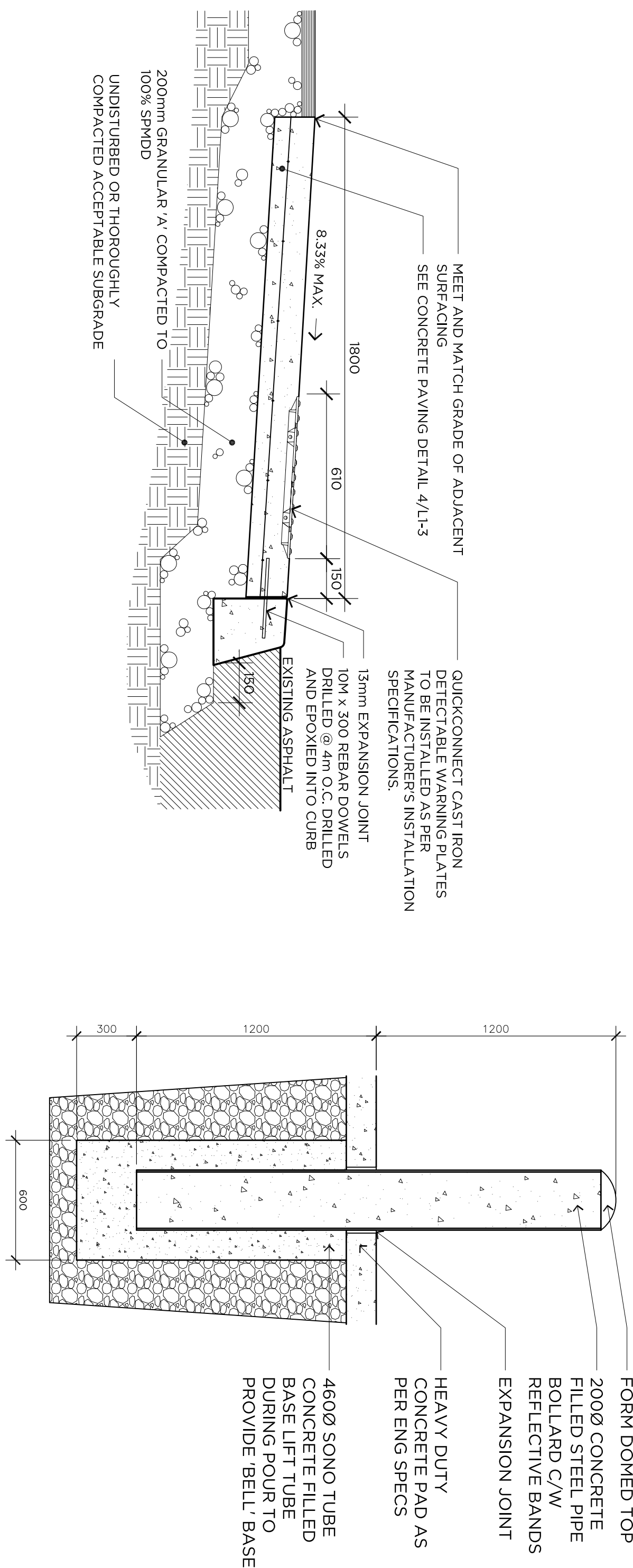


SHEET TITLE

DETAILS

REVIEWED	GH	DRAWING NO.	
DRAWN	KZ		
DATE	04 OCT 2017		SHEET NO.
SCALE	AS NOTED		L3-2

PROJECT NUMBER



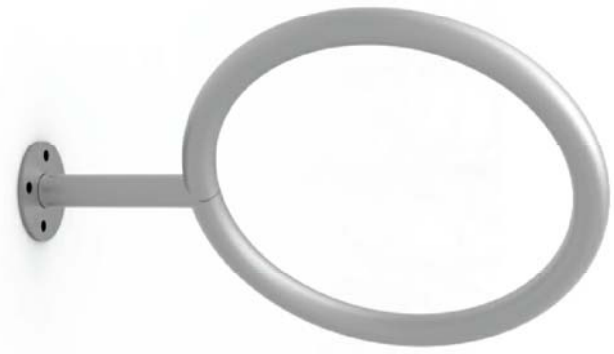
2	BOLLARD
---	---------

1:15

NTS

DETECTABLE WARNING STRIP

1:15



MATERIALS: The bike rack is constructed using H.S. steel tube and steel mounting plate.

FINISH: All steel components are protected with E-Coat rust proofing.

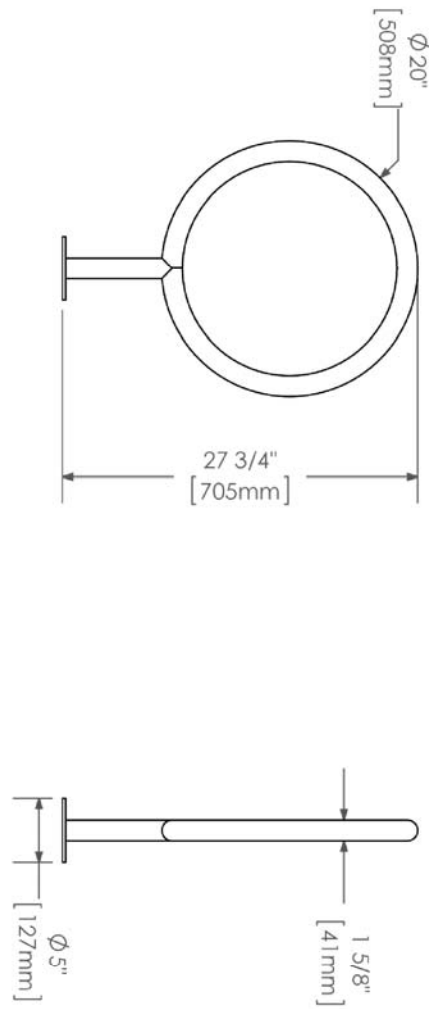
The Maglin Powdercoat System provides a durable finish on all metal surfaces.

INSTALLATION: The bike rack is delivered pre-assembled.

TO SPECIFY: Select MBR150-S

Choose:

- Galvanized Finish



DIMENSIONS:

Height: 27.75" (70.5cm)
Diameter: 20" (50.8cm)
Weight: 12.04lbs (5.5kg)

3	BIKE RACKS
---	------------

1:15