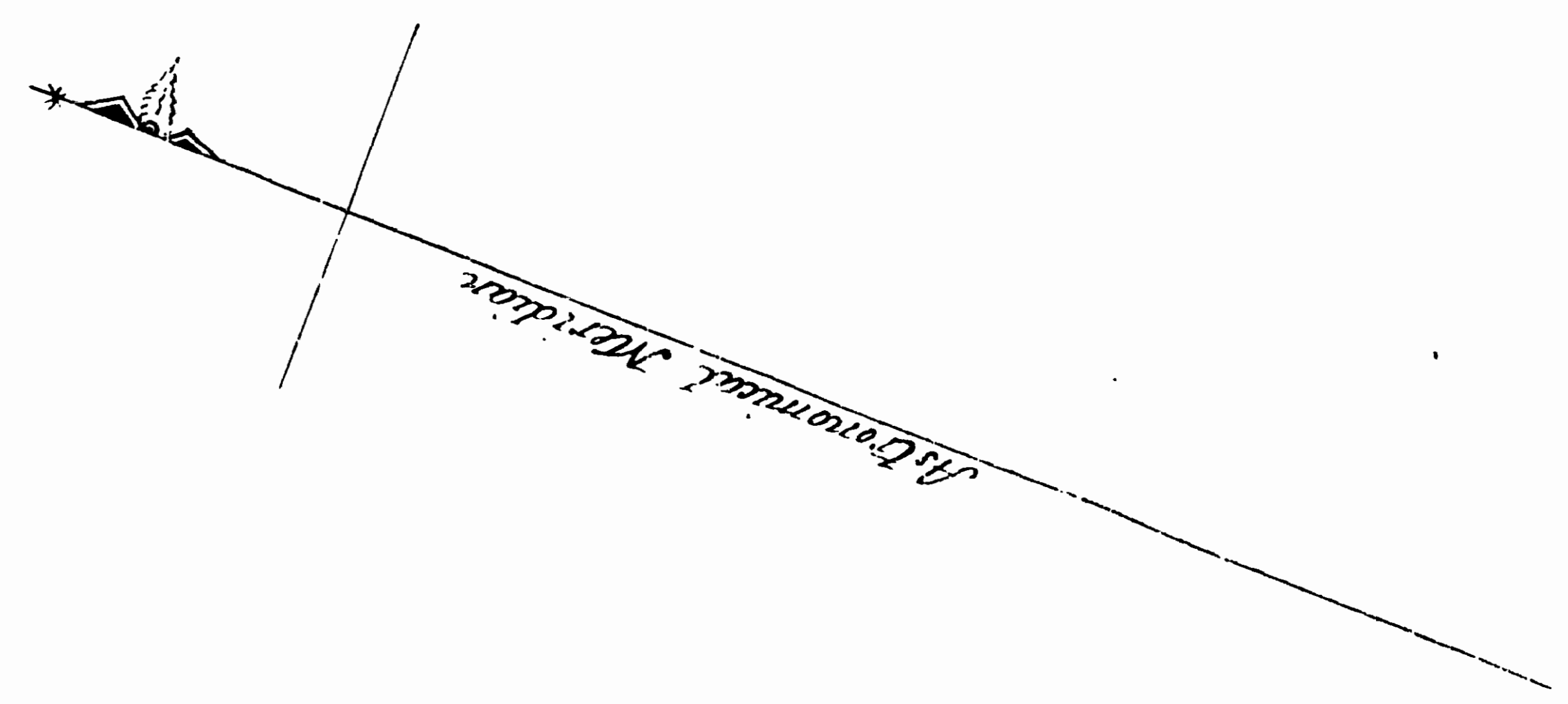
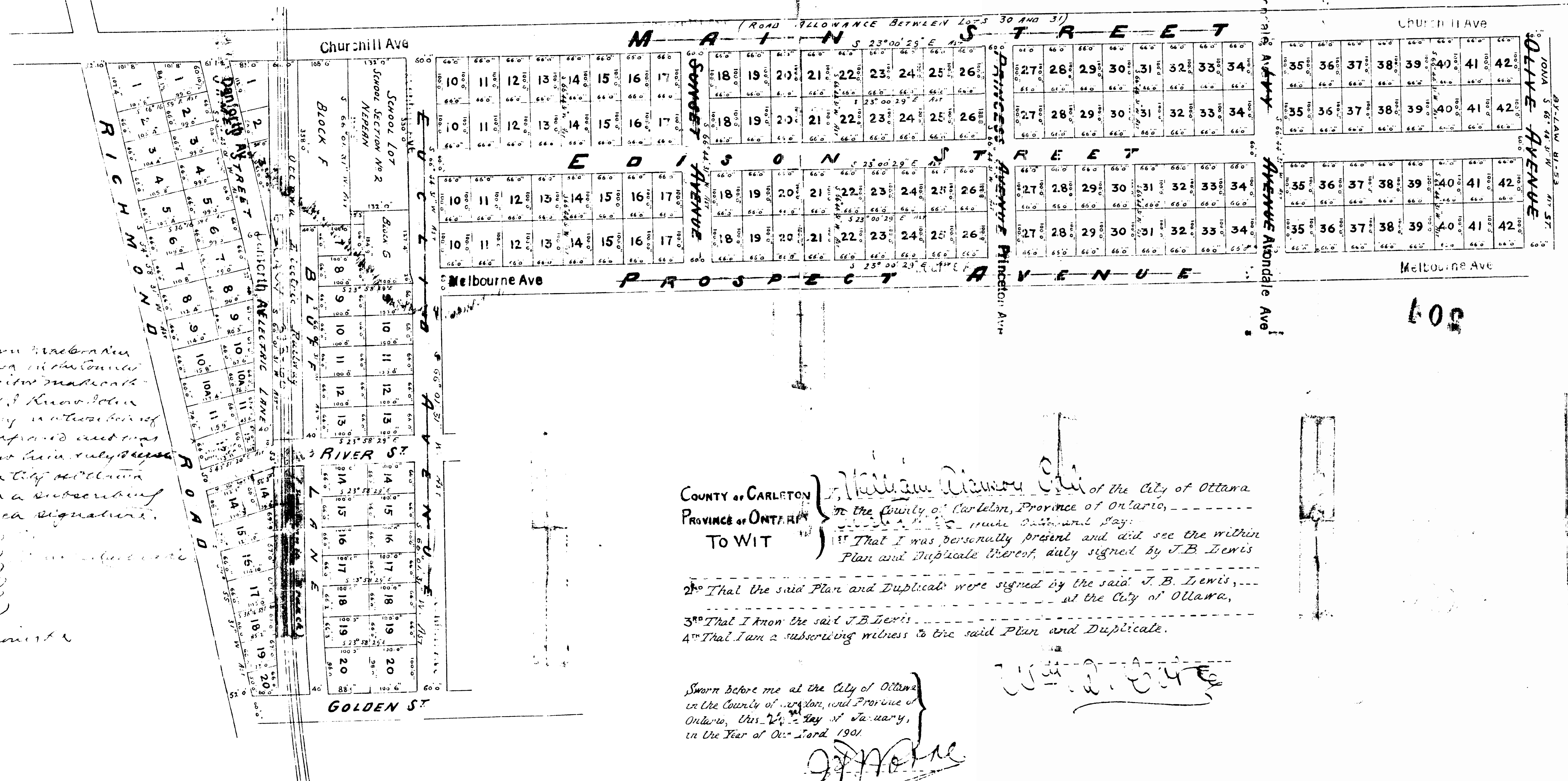


PLAN 204

SHEWING RE-SUBDIVISION OF THAT PART OF LOT NO 30
 1ST CONCESSION (O.F.), NEPEAN, SOUTH OF THE RICHMOND ROAD,
 SHEWN ON PLAN NO 179 (SEE NOTE),
 AND ALSO A SUBDIVISION OF
 PART OF THE EAST HALF OF THE SAID LOT NO 30
 SCALE, 150 FEET TO AN INCH.



I hereby certify that this Plan was prepared on my behalf,
J. B. Lewis



Wm. J. Carleton
 I, the undersigned, Mayor of the City of Ottawa, in the Council of Carleton, do hereby make and say: That I know John E. Cole the party in whose favor this plan is prepared and was present and saw him sign the same at the City of Ottawa and that I am a subscribing witness to his signature.

Wm. J. Carleton
 Mayor of the City of Ottawa
 20th day of April 1901
 A Commissioner

COUNTY OF CARLETON } *William Dawson* of the City of Ottawa
 PROVINCE OF ONTARIO } in the County of Carleton, Province of Ontario,
 TO WIT } do hereby make and say:
 1st That I was personally present and did see the within Plan and Duplicate thereof, duly signed by J.B. Lewis
 2nd That the said Plan and Duplicate were signed by the said J.B. Lewis, at the City of Ottawa,
 3rd That I know the said J.B. Lewis,
 4th That I am a subscribing witness to the said Plan and Duplicate.

Sworn before me at the City of Ottawa in the County of Carleton, and Province of Ontario, this 20th day of January, in the Year of Our Lord 1901.
J. B. Lewis
 A Commissioner &c.

Witness,
Wm. J. Carleton

I hereby certify that this Plan accurately shows the manner in which the lands included therein have been surveyed and subdivided by me; and that this Plan has been prepared in accordance with the provisions of "The Registry Act."

Ottawa, January 20th 1901.

O. I. Surveyor

PLAN NO 179 IS DATED 1ST JUNE 1898, AND IS REGISTERED IN THE REGISTRY OFFICE FOR THE COUNTY OF CARLETON. THE LOTS RE-SUBDIVIDED ARE THESE CUT UP AND RENDERED USELESS BY THE FILL ON THE RIGHT OF WAY OF THE BRITANNIA BRANCH OF THE OTTAWA ELECTRIC RAILWAY, AND ARE COLOURED YELLOW; THE LOTS ON THE NEW SUBDIVISION BEING COLOURED PINK. LOTS 1, 1/2 2, 3, 4, 6, 7, 8, 9, SOUTH RICHMOND ROAD; AND THE PARTS OF LOTS 2 AND 3 SOUTH JAMES STREET NORTH OF THE RIGHT OF WAY OF THE OTTAWA ELECTRIC RAILWAY, WERE SOLD ACCORDING TO THE SAID PLAN NO 179. LOTS NO 12, 13 AND 14, SOUTH RICHMOND ROAD, WERE SOLD PRIOR TO THE REGISTRATION OF THE SAID PLAN.

408

408