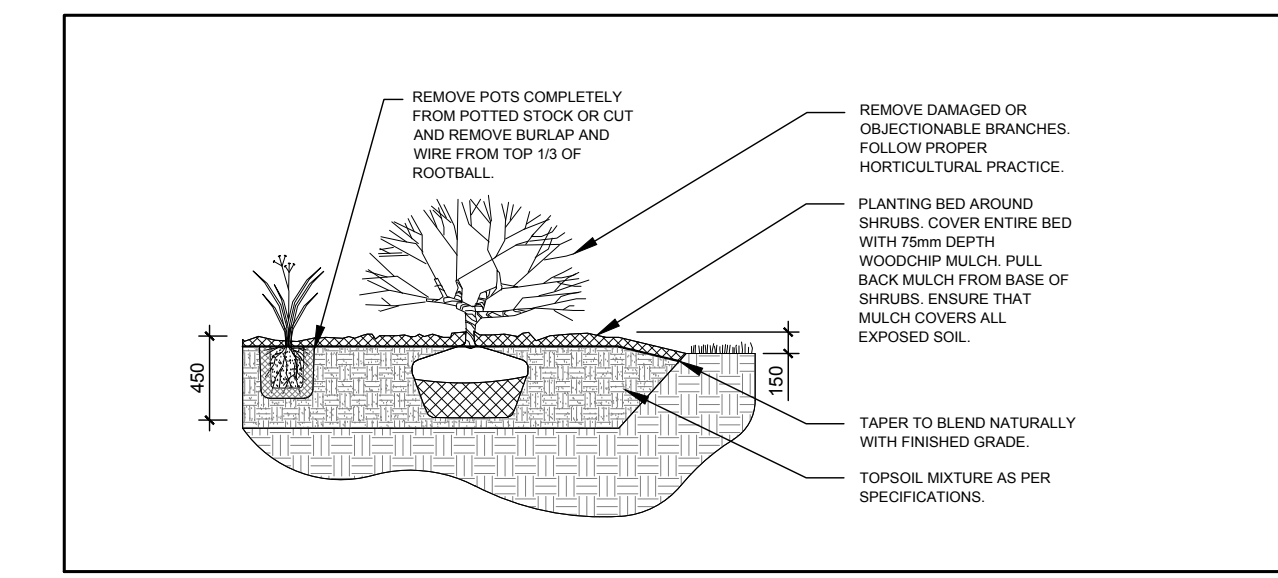
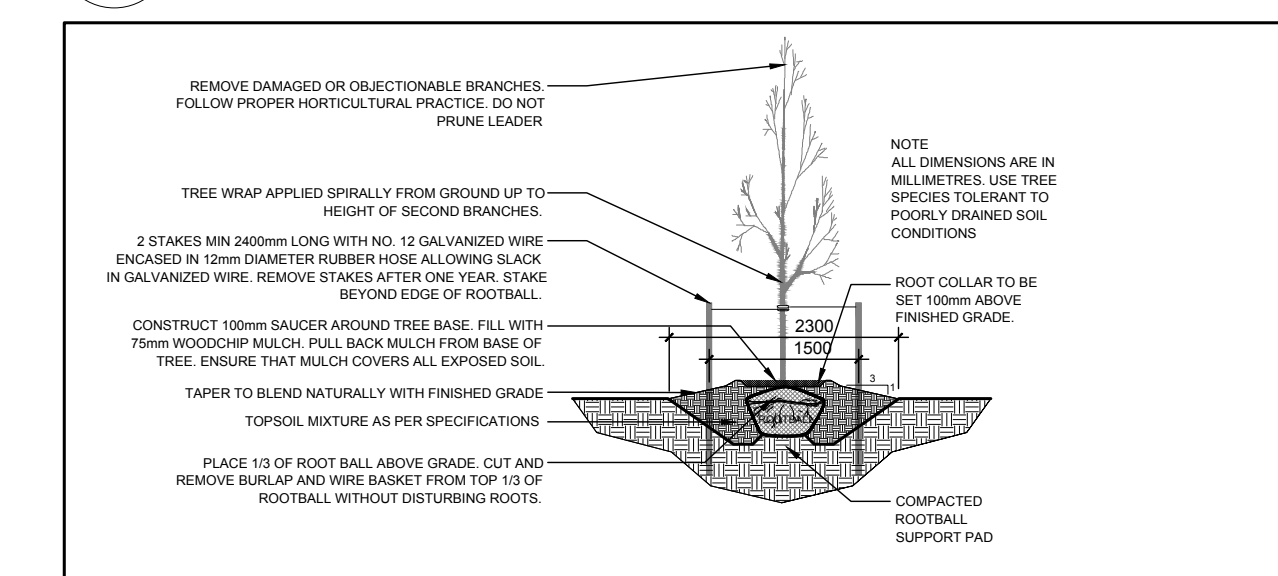


1 TREE CONSERVATION REPORT AND LANDSCAPE PLAN
SCALE: 1:200



2 SHRUB/PERENNIAL PLANTING
SCALE: NTS



3 DECIDUOUS TREE PLANTING
SCALE: NTS

EXISTING TREE LIST

KEY	QTY	BOTANICAL NAME	COMMON NAME	SIZE	CONDITION	REMARKS
TREES						
AN	4	Acer negundo	Manitoba Maple	150-350mm ø	FAIR-GOOD	See Plan
AR	1	Acer rubrum	Red Maple	600mm ø	GOOD	See Plan
AS	1	Acer saccharum	Sugar Maple	700mm ø	GOOD	See Plan
BP	1	Betula papyrifera	White Birch	350mm ø	GOOD	See Plan
FR	1	Fraxinus sp.	Ash	450mm ø	POOR	See Plan
PG	2	Picea glauca	White Spruce	400mm ø	GOOD	See Plan
PP	5	Picea pungens	Colorado Spruce	150mm ø	GOOD	See Plan
PT	3	Populus tremuloides	Trembling Aspen	200-300mm ø	FAIR	See Plan

PROPOSED PLANT LIST

KEY	QTY	BOTANICAL NAME	COMMON NAME	SIZE	CONDITION	REMARKS
TREES						
JL	3	Syringa reticulata 'Ivorysilk'	Ivorysilk Tree Lilac	60mm Cal	B&B	Single Leader
SB	5	Amelanchier canadensis	Serviceberry	60mm Cal	B&B	Single Leader
SHRUBS						
AH	20	Hydrangea arborescens 'Annabelle'	Annabelle Hydrangea	1 Gallon Pot	Potted	Space 1000mm O.C.
FS	28	Rhus aromatica 'Gro-Low'	Fragrant Sumac	600mm Ht.	Potted	Space 1000mm O.C.
GS	8	Spiraea x arguta	Garland Spirea	800mm Ht.	Potted	Space 1200mm O.C.
JA	24	Juniperus 'Andorra Compacta'	Compact Andorra Juniper	600mm Spr.	Potted	Space 1000mm O.C.
SJ	20	Hypericum kalmianum 'Ames'	Ames' St. John's Wort	800mm Ht.	Potted	Space 1200mm O.C.
PERENNIALS						
AJ	135	Sedum 'Autumn Joy'	Autumn Joy Sedum	250mm Pot.	Potted	Space 500mm O.C.
DK	44	Calamagrostis brachytricha	Korean Feather Reed Grass	250mm Pot.	Potted	Space 800mm O.C.
KF	18	Calamagrostis x acutiflora 'Karl Foerster'	Feather Reed Grass	250mm Pot.	Potted	Space 800mm O.C.
MS	17	Miscanthus sinensis 'Purpurascens'	Flamegrass	250mm Pot.	Potted	Space 1000mm O.C.
OG	62	Helictotrichon sempervirens	Blue Oatgrass	250mm Pot.	Potted	Space 600mm O.C.
SG	22	Panicum virgatum 'Prairie Fire'	Prairie Fire Switchgrass	250mm Pot.	Potted	Space 1000mm O.C.

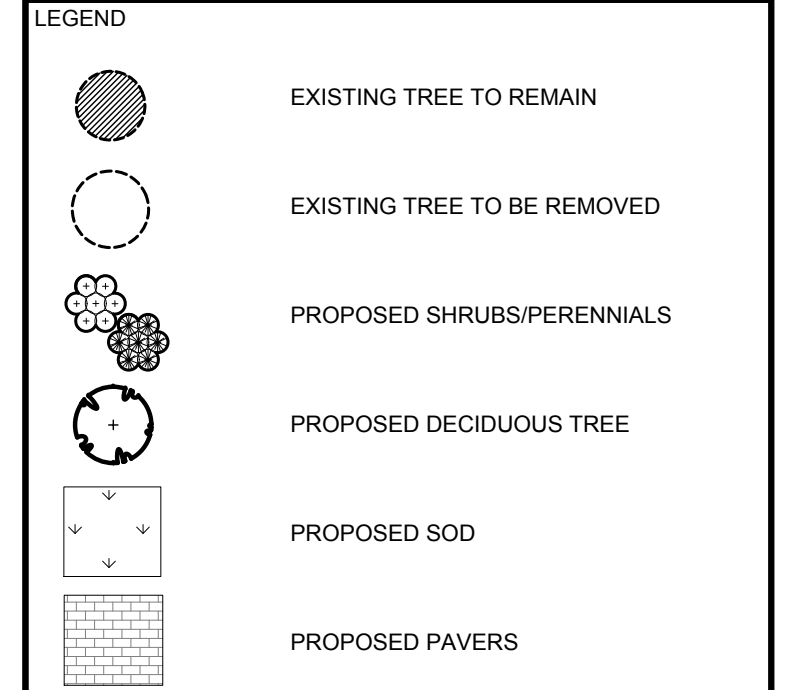
- GENERAL NOTES:**
- It is the responsibility of the appropriate contractor or official to report any errors, omissions or discrepancies on this plan with actual site conditions to the Landscape Architect before proceeding with construction.
 - The contractor is to notify all utility companies and authorities prior to any excavation and ascertain locations of underground services.
 - The contractor is to reinstate all areas and items damaged as a result of construction activity.
 - The contractor is to comply with all pertinent codes and by-laws.
 - The contractor is to maintain a positive surface run-off throughout the entire construction period.
 - The Landscape Architect is not responsible for subsurface conditions.
 - The contractor is to identify all existing trees to remain on site with the Landscape Architect prior to construction.
 - The contractor is to stake the proposed location of all plant material in conjunction with the Landscape Architect prior to excavation.
 - Minimum distances for selected deciduous trees are as follows:
 - Building Foundations 7.5m
 - Sidewalks 1.5m
 - Public Streets 2.5m
 - Underground Infrastructure 2.0m
 - All trees within 1m of underground utility trenches are to be excavated by hand.
 - Remove all protective wrapping from tree trunks after installation.
 - Staking of trees shall only be performed if necessary.
 - Ensure that mulch is pulled back a min. distance of 75mm from base of tree trunk.

CLIENT:
280 Herzberg Development Corp.
Tel: (613) 836-3070
Fax: (613) 836-3065

CONSULTANTS
ARCHITECTS:
Roderick Lahey Architect Inc.
56 Booth St., Ottawa, ON K1S 3J6
Tel: (613) 724-9822

SURVEYORS:
Annis O'Sullivan Vollebek Ltd.
14 Conover Drive, Suite 500, Nepean, ON K2E 7K6
Tel: (613) 727-0860

CIVIL ENGINEERS:
David Schaeffer Engineering Ltd.
120 Ibis Road, Stittville, ON K2S 1E9
Tel: (613) 838-0856



No.	Issue	Date	DR	CK
7	SITE TRIANGLE ADDED	04/11/2018	ML	JL
6	REVISED PER CITY COMMENTS	03/27/2018	ML	JL
5	TREE LOCATIONS REVISED	09/07/2017	ML	JL
4	TREES ADDED	09/05/2017	ML	JL
3	REVISED PER NEW SITE PLAN	08/23/2017	ML	JL
2	ISSUED FOR COORDINATION	04/04/2017	ML	JL
1	ISSUED FOR DISCUSSION AND REVIEW	02/07/2017	ML	JL

JAMES B. LENNOX & ASSOCIATES INC.
LANDSCAPE ARCHITECTS
3332 CARLING AVE. OTTAWA, ONTARIO K2H 5A8
Tel: (613) 722-5168 Fax: (866) 343-3942

PROJECT
280 HERZBERG RESIDENTIAL BUILDING
280 HERZBERG RD, OTTAWA ON

DRAWING
TREE CONSERVATION REPORT AND
LANDSCAPE PLAN

STAMP: [Professional Seal of James B. Lennox & Associates Inc., Ontario Association of Landscape Architects]

SCALE: AS SHOWN

START DATE: JANUARY 2017

PROJECT NO.:

PROJECT NORTH: [North Arrow]

DRAWING NO. **L.1**

PLOT SIZE ARCH-D