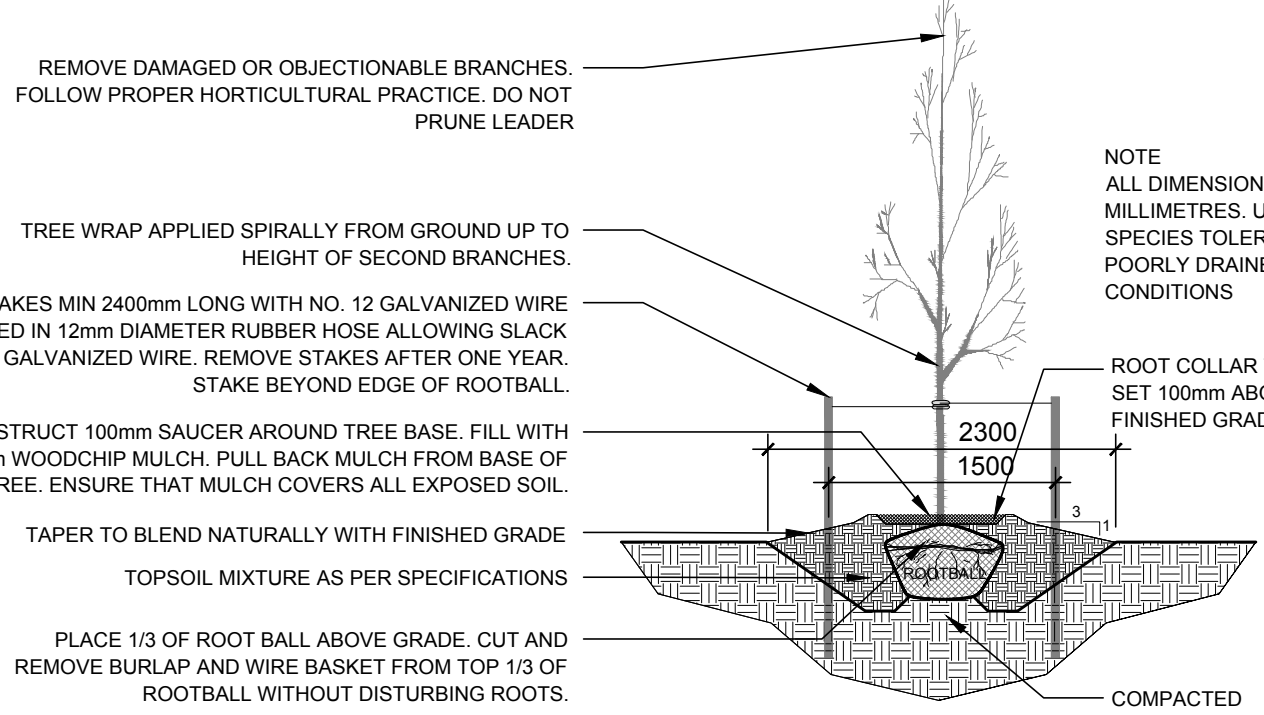


### PROPOSED PLANT LIST

KEY	qty.	BOTANICAL NAME	COMMON NAME	SIZE	CONDITION	REMARKS
<strong>TREES</strong>						
HL	1	Gleditsia triacanthos 'Draves'	Streetkeeper Honeylocust	60mm ø	B&B	
JTL	4	Syringa reticulata	Japanese Tree Lilac	60mm ø	B&B	
<strong>SHRUBS</strong>						
AH	13	Hydrangea arborescens 'Annabelle'	Annabelle Hydrangea	3 gal. pot	Potted	800 mm o.c.
<strong>PERENNIALS</strong>						
KF	4	Calamagrostis 'Karl Forester'	Karl Forester Grass	250mm pot	Potted	800 mm o.c.
CF	10	Echinacea purpurea	Purple coneflower	100mm pot	Potted	400 mm o.c.
MF	17	Hemerocallis 'Moses Fire'	Moses Fire Daylily	250mm pot	Potted	400 mm o.c.
DL	18	Hemerocallis 'Stella D'Oro'	Stella D'Oro Day Lily	150mm pot	Potted	400 mm o.c.
DA	13	Leucanthemum x superbum	Shasta Daisy	150mm pot	Potted	400 mm o.c.
MS	3	Miscanthus sinensis Anderss	Chinese Silvergrass	250 mm pot	Potted	800 mm o.c.
BE	11	Rudbeckia hirta	Black-Eyed Susan	150mm pot	Potted	400 mm o.c.
AJ	13	Sedum telephium 'Autumn Joy'	Autumn Joy Sedum	150mm pot	Potted	400 mm o.c.

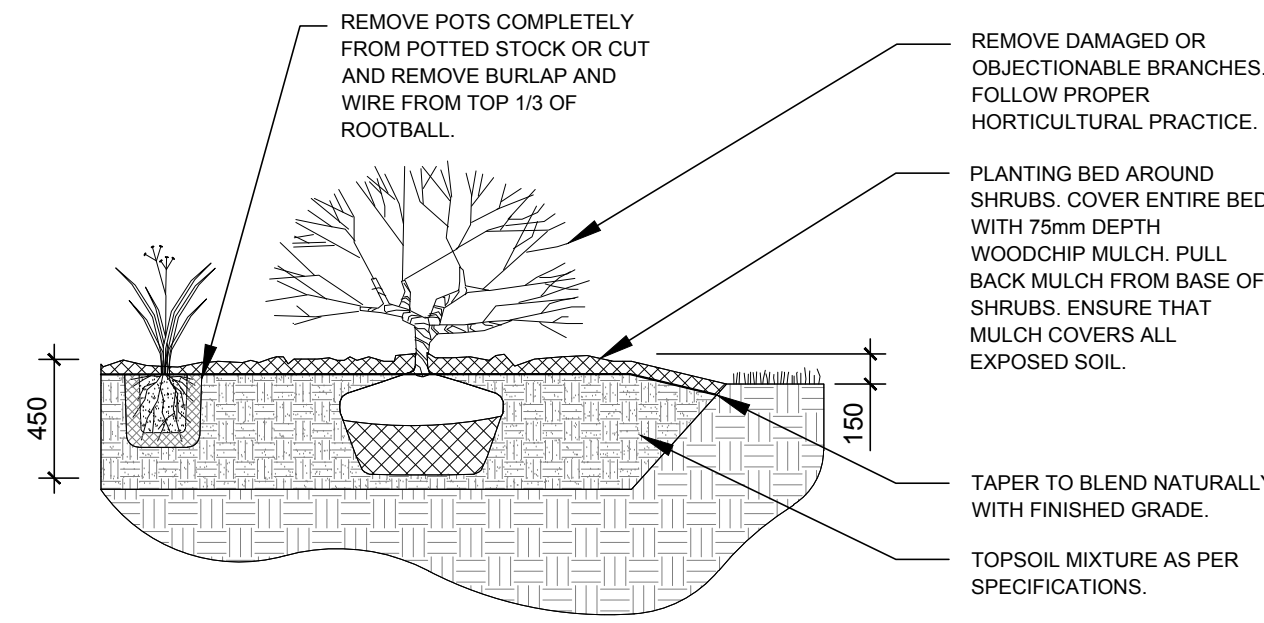
### GENERAL NOTES:

- It is the responsibility of the appropriate contractor or official to report any errors, omissions or discrepancies on this plan with actual site conditions to the Landscape Architect before proceeding with construction.
- The contractor is to notify all utility companies and authorities prior to any excavation and ascertain locations of underground services.
- The contractor is to reinstate all areas and items damaged as a result of construction activity.
- The contractor is to comply with all pertinent codes and by-laws.
- The contractor is to maintain a positive surface run-off throughout the entire construction period.
- The Landscape Architect is not responsible for subsurface conditions.
- The contractor is to identify all existing trees to remain on site with the Landscape Architect prior to construction.
- The contractor is to stake the proposed location of all plant material in conjunction with the Landscape Architect prior to excavation.
- Minimum distances for selected deciduous trees are as follows:
  - Building Foundations 7.5m
  - Sidewalks 1.5m
  - Public Streets 2.5m
  - Underground Infrastructure 2.0m
- All trees within 1m of underground utility trenches are to be excavated by hand.
- Remove all protective wrapping from tree trunks after installation.
- Staking of trees shall only be performed if necessary.
- Ensure that mulch is pulled back a min. distance of 75mm from base of tree trunk.



### 2 DECIDUOUS TREE PLANTING

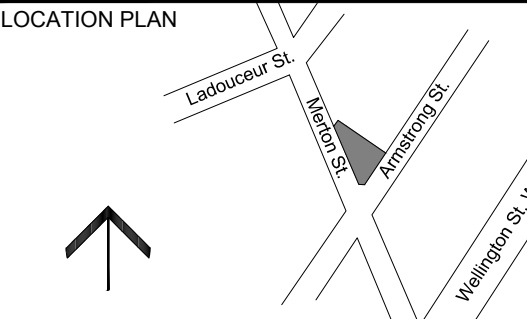
L.1 N.T.S.



### 3 SHRUB AND PERENNIAL PLANTING

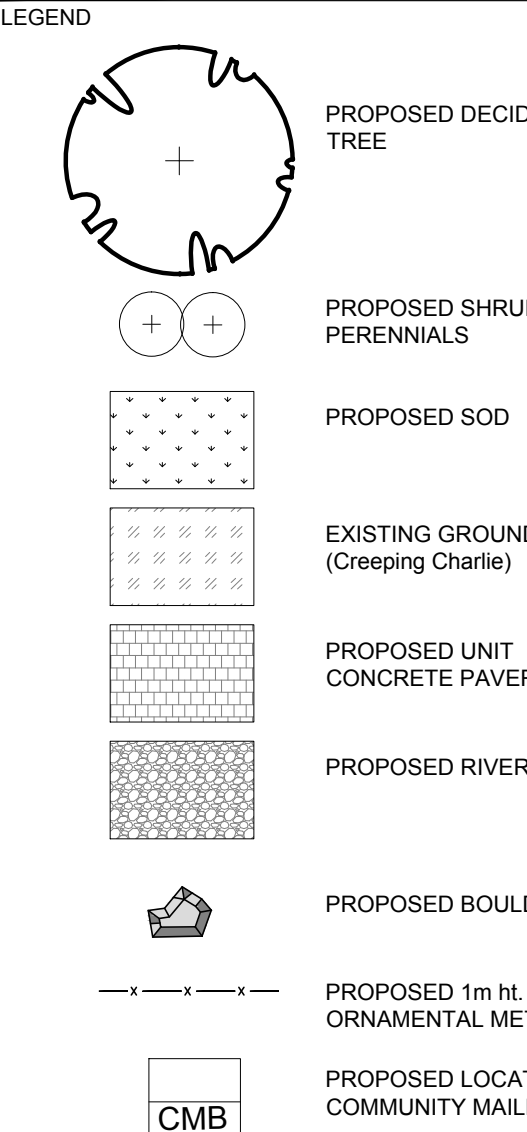
L.1 N.T.S.

CLIENT:  
SHERBROOKE  
URBAN DEVELOPMENTS LTD.



CONSULTANTS  
ARCHITECTS:  
ROSALINE J. HILL  
ARCHITECT & DEVELOPMENT CONSULTANT  
414 CHURCHILL AVENUE, OTTAWA, K1G 2G4  
Tel: (613) 837-2822

CIVIL ENGINEERS:  
T.L. MAK ENGINEERING CONSULTANTS LTD.  
1465 YONGE STREET, SUITE 210, OTTAWA, K1G 2G7  
Tel: (613) 837-2816

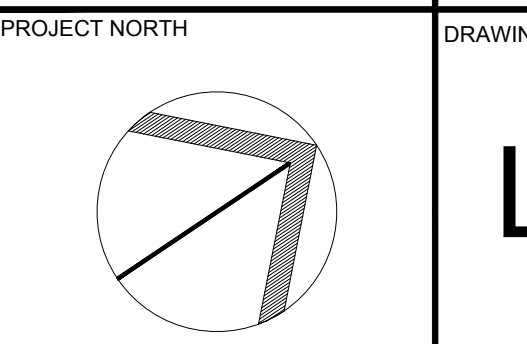
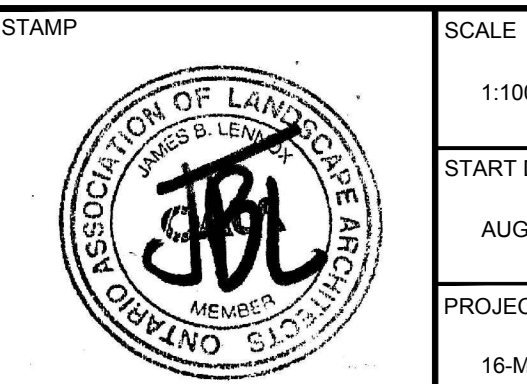


4	ISSUED FOR MYLARS	04/19/2017	ML	JL
3	REVISED PER CITY'S COMMENTS	01/17/2017	ML	JL
2	ISSUED FOR SITE PLAN APPROVAL	10/19/2016	LC	JL
1	ISSUED FOR COMMENTS AND REVIEW	10/17/2016	LC	JL
No.	Issue	Date	ML	CK

JAMES B. LENNOX & ASSOCIATES INC.  
LANDSCAPE ARCHITECTS  
3332 CARLING AVE. OTTAWA, ONTARIO K2H 5A8  
Tel: (613) 722-5168 Fax: (866) 343-3942

PROJECT  
HINTONBURG INFILL  
107 ARMSTRONG STREET, OTTAWA

DRAWING  
LANDSCAPE PLAN



APPROVED ☐ REFUSED ☐  
THIS DAY OF , 20  
DOUGLAS JAMES, MCIP, RPP, ACTING MANAGER  
DEVELOPMENT REVIEW CENTRAL,  
PLANNING, INFRASTRUCTURE AND ECONOMIC  
DEVELOPMENT DEPARTMENT, CITY OF OTTAWA

L.1

PLOT SIZE ARCH-D

D07-12-16-0151