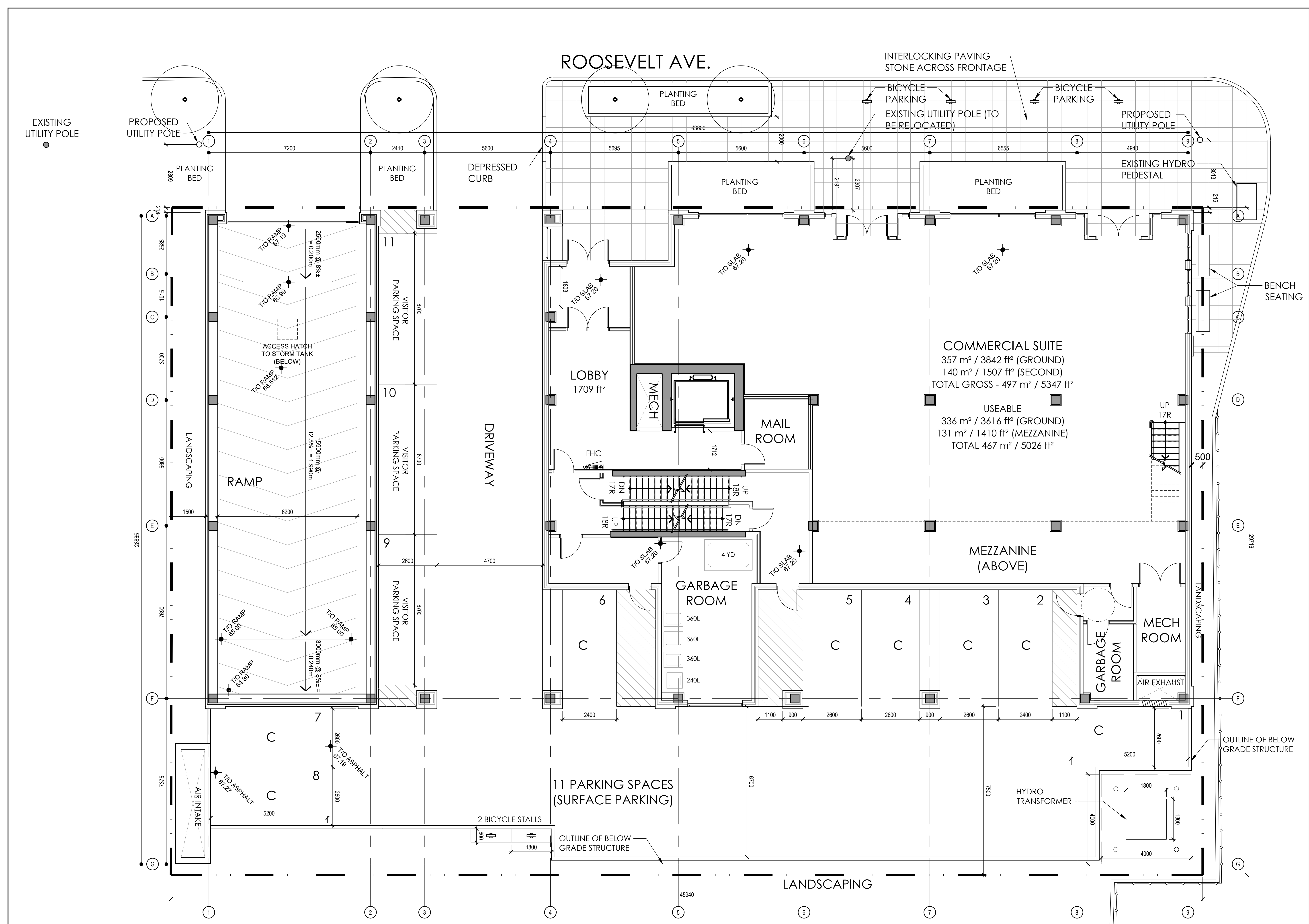


It is the responsibility of the appropriate Contractor to check and verify all dimensions on site and report all errors and/or omissions to the Architect.
 All Contractors must comply with all pertinent codes and by-laws.
 All dimensions are measured from face of stud to face of stud unless indicated otherwise.
 Do not scale drawings.
 This drawing may not be used for construction until signed.



03 APR 03 2018 ISSUED FOR REVIEW
 02 DEC 15 2017 ISSUED FOR SITE PLAN CONTROL
 01 NOV 29 2017 ISSUED FOR REVIEW

no	date	revision

project north

professional stamp

ALCAIDE WEBSTER
 ARCHITECTS INC
 202-1320 Carling Avenue
 Ottawa, ON K1Z 7K8 www.owa-arch.ca

ARCHITECTURE PLANNING
 DESIGN BUILD PROJECT MANAGEMENT

consultant SURVEYOR - ANNIS O'SULLIVAN VOLLEBEKK LTD.
 LANDSCAPE ARCHITECT - GINO J. AIELLO
 CIVIL - DAVID SCHAEFFER ENGINEERING LTD.
 PLANNING - FOTENN CONSULTANTS INC.
 TRAFFIC - DST CONSULTING ENGINEERING
 GEO-TECHNICAL - PATERSON GROUP

project
406 ROOSEVELT
 DOMICILE DEVELOPMENTS
 406 ROOSEVELT STREET.
 OTTAWA, ON

drawn MH checked VA

date APR 03 2018 project no. 17-15

drawing title
GROUND FLOOR PLAN

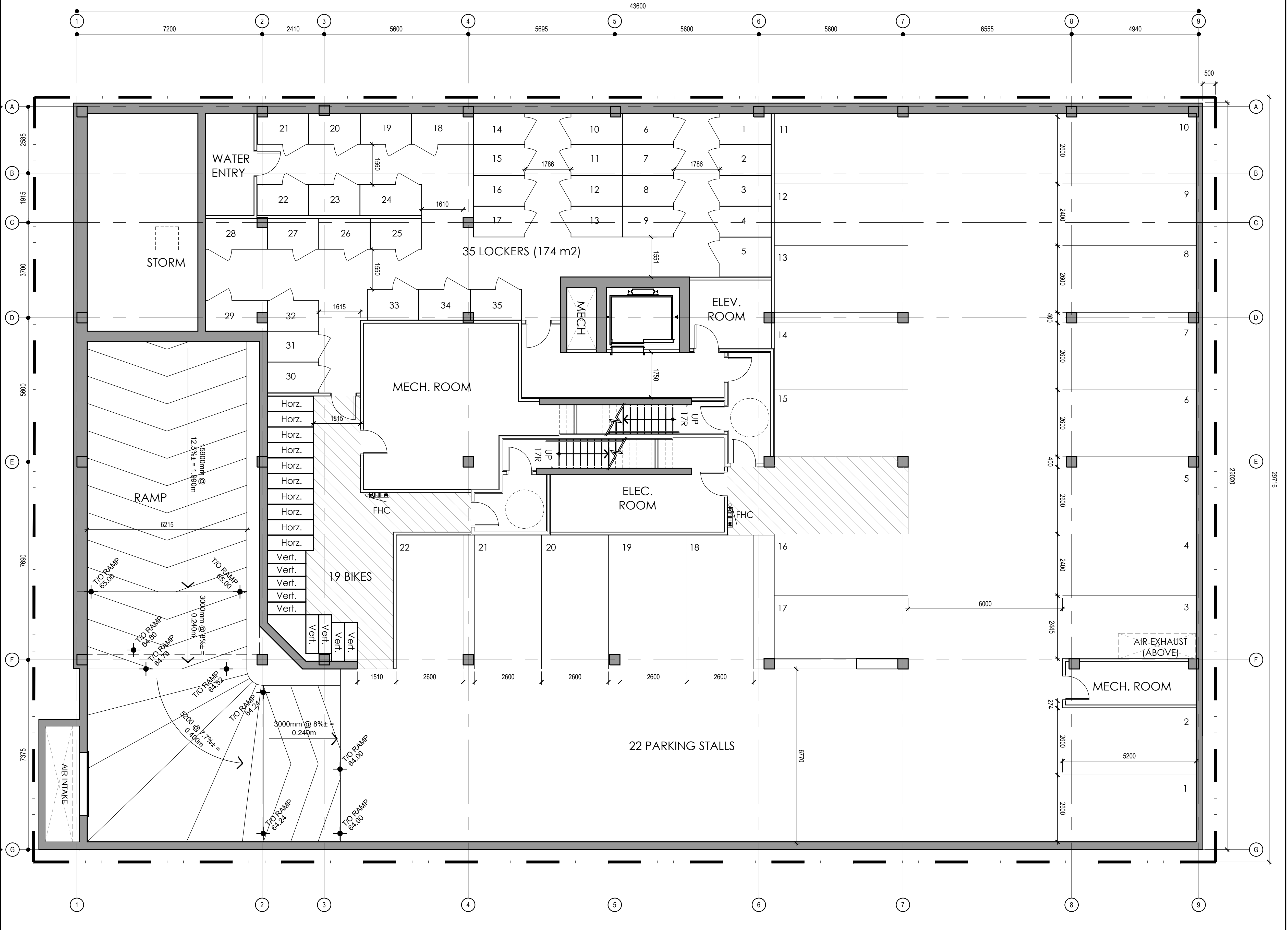
revision 02 drawing no. **A110**

1 GROUND FLOOR
 SCALE 1:75

DEC 15, 2017

It is the responsibility of the appropriate Contractor to check and verify all dimensions on site and report all errors and/or omissions to the Architect.
 All Contractors must comply with all pertinent codes and by-laws.
 All dimensions are measured from face of stud to face of stud unless indicated otherwise.
 Do not scale drawings.
 This drawing may not be used for construction until signed.

ROOSEVELT AVE.
 43600



1 BASEMENT PLAN
 SCALE 1:75

03 APR 03 2018 ISSUED FOR REVIEW
 02 DEC 15 2017 ISSUED FOR SITE PLAN CONTROL
 01 NOV 29 2017 ISSUED FOR REVIEW

no	date	revision

project north

professional stamp

ALCAIDE WEBSTER
 ARCHITECTS INC
 202-1320 Carling Avenue
 Ottawa, ON K1Z 7K8 www.owa-arch.ca

ARCHITECTURE PLANNING
 DESIGN BUILD PROJECT MANAGEMENT

consultant
 SURVEYOR - ANNIS O'SULLIVAN VOLLEBEKK LTD.
 LANDSCAPE ARCHITECT - GINO J. AIELLO
 CIVIL - DAVID SCHAEFFER ENGINEERING LTD.
 PLANNING - FOTENN CONSULTANTS INC.
 TRAFFIC - DST CONSULTING ENGINEERING
 GEO-TECHNICAL - PATERSON GROUP

project
406 ROOSEVELT
 DOMICILE DEVELOPMENTS
 406 ROOSEVELT STREET.
 OTTAWA, ON

drawn MH checked VA

date APR 03 2018 project no. 17-15

drawing title
**BASEMENT (PARKING)
 FLOOR PLAN**

revision 02 drawing no. **A050**

DEC 15, 2017