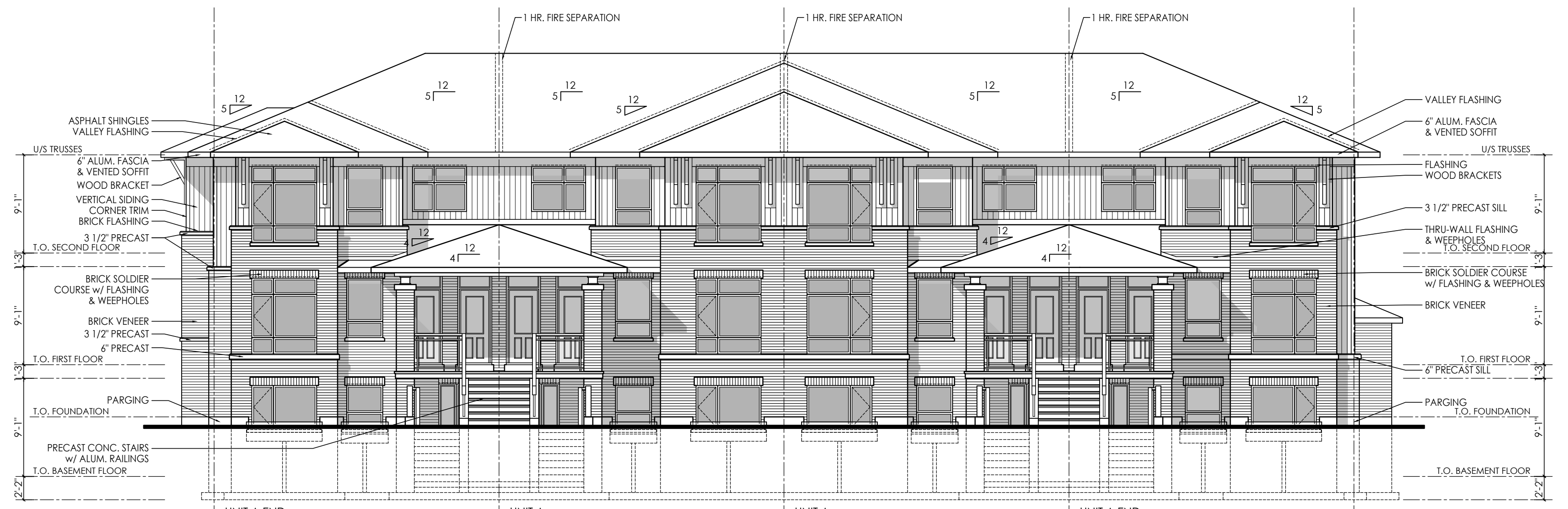




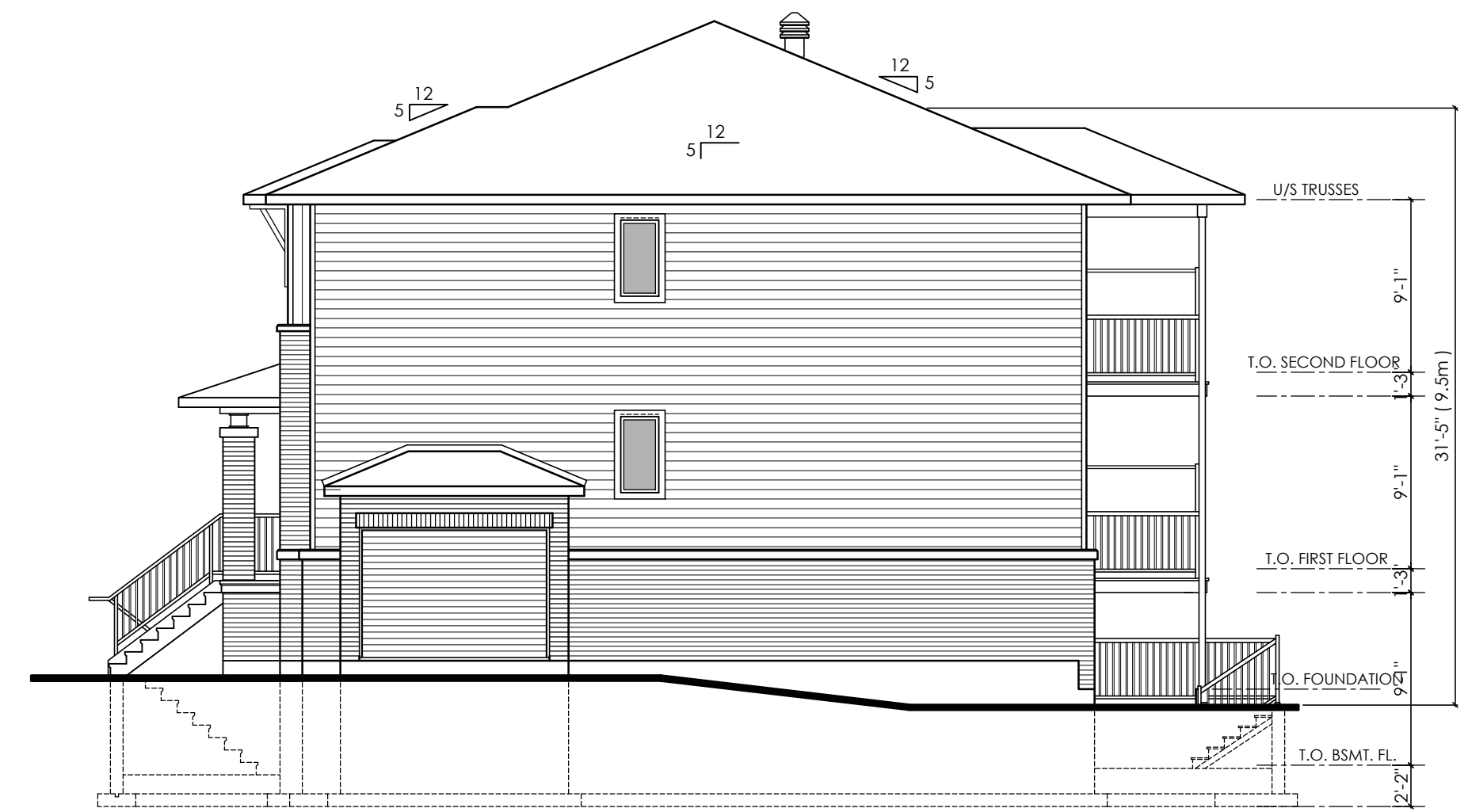
UNIT A END - \_\_\_\_\_  
 UNIT B END - \_\_\_\_\_  
 UNIT C END - \_\_\_\_\_  
**STREET SIDE ELEVATION - GAS METER ENCLOSURE**



UNIT A END - \_\_\_\_\_  
 UNIT B END - \_\_\_\_\_  
 UNIT C END - \_\_\_\_\_  
**FRONT ELEVATION**



UNIT A END rev., - \_\_\_\_\_  
 UNIT B END rev., - \_\_\_\_\_  
 UNIT C END rev., - \_\_\_\_\_  
**REAR ELEVATION**



UNIT A END rev., - \_\_\_\_\_  
 UNIT B END rev., - \_\_\_\_\_  
 UNIT C END rev., - \_\_\_\_\_  
**INTERIOR SIDE ELEVATION w/ HYDRO ENCLOSURE**

APPROVED  REFUSED   
 THIS \_\_\_\_\_ DAY OF \_\_\_\_\_, 20\_\_  
 \_\_\_\_\_  
 JEFF MCEWEN, P. ENG.  
 MANAGER DEVELOPMENT REVIEW - EAST  
 PLANNING, INFRASTRUCTURE AND ECONOMIC  
 DEVELOPMENT DEPARTMENT, CITY OF OTTAWA

**M. David Blakely**  
 Architect Inc.  
 2200 Prince of Wales Dr. - Suite 101  
 Ottawa, Ontario K2E 6Z9  
 Phone (613) 226-8811 Fax (613) 226-7942

**GENERAL NOTES:**  
 1. THE CONTRACTOR IS RESPONSIBLE FOR CHECKING AND VERIFYING ALL DIMENSIONS. ANY DISCREPANCY MUST BE REPORTED TO M. DAVID BLAKELY ARCHITECT INC.  
 2. ALL WORK AND MATERIALS TO BE IN COMPLIANCE WITH ALL CODES, REGULATIONS, AND BY-LAWS.  
 3. ADDITIONAL DRAWINGS MAY BE ISSUED FOR CLARIFICATION TO ASSIST THE PROPER EXECUTION OF WORK. SUCH DRAWINGS WILL HAVE THE SAME MEANING AND INTENT AS IF THEY WERE INCLUDED WITH THE PLANS IN CONTRACT DOCUMENTS.  
 4. DO NOT SCALE DRAWINGS.  
 5. THIS DRAWING SHALL NOT BE USED OR COPIED WITHOUT THE AUTHORIZATION OF THE ARCHITECT.

**POST SCHEDULE**

P1	3" DIA. ADJUSTABLE STEEL TELEPOST
P2	8500 POUND CAP. (MIN.)
P3	2-2"x4.6 OR 8" (AS APPLICABLE)
P4	3-2"x4.6 OR 8" (AS APPLICABLE)
P5	4-2"x4.6 OR 8" (AS APPLICABLE)
P6	5-2"x4.6 OR 8" (AS APPLICABLE)
P6	HSS 3"x3"x.188" C/W 5"x3/8"x8" B. PL. & CAP PL.

**BRICK LINTEL SCHEDULE**

OPENING UP TO	ANGLE SIZE
5'-0"	L 3 1/2"x3 1/2"x5/16"
7'-0"	L 4"x3 1/2"x5/16"
8'-0"	L 5"x3 1/2"x5/16"
9'-0"	L 5"x3 1/2"x 3/8"
10'-0"	L 6"x4"x 3/8"

ARCHITECT SEAL:

NO.	DATE	DESCRIPTION	REVISED
1.	24/01/18	FOR REVIEW	SM
2.			
3.			
4.			
5.			
6.			
7.			
8.			
9.			
10.			
11.			
12.			
13.			
14.			
15.			
16.			
17.			
18.			
19.			
20.			
21.			
22.			
23.			
24.			

A - DETAIL NUMBER  
 B - SHEET NUMBER (DETAIL REQUIRED)  
 C - SHEET NUMBER (DETAIL LOCATION)

PROJECT: **78 UNIT PLANNED UNIT DEVELOPMENT 1298 OGILVIE ROAD OTTAWA, ONT.**

CLIENT: **RICHCRAFT Group Of Companies**

DRAWING TITLE: **TYPICAL BLOCK ELEVATIONS**

DATE: **JAN., 2018.** SCALE: **1/8" = 1'-0"** SHEET NO.: **A-0**

DRAWN BY: **SBM** CHECKED: **MDB**