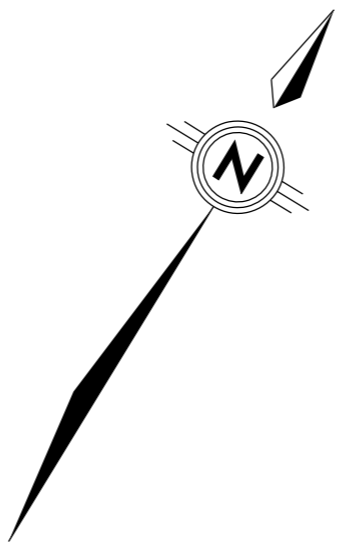
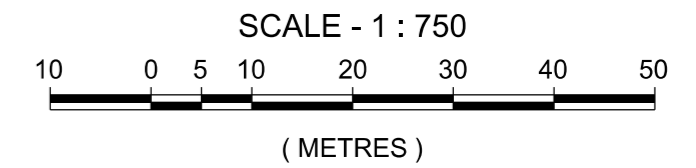


PARCEL	PIN
1	Part of 04112-0186
2	Part of 04112-0005
3	All of 04112-0184
4	
5	
6	
7	All of 04112-0029
8	Part of 04112-0154
9	
10	All of 04112-0027
11	

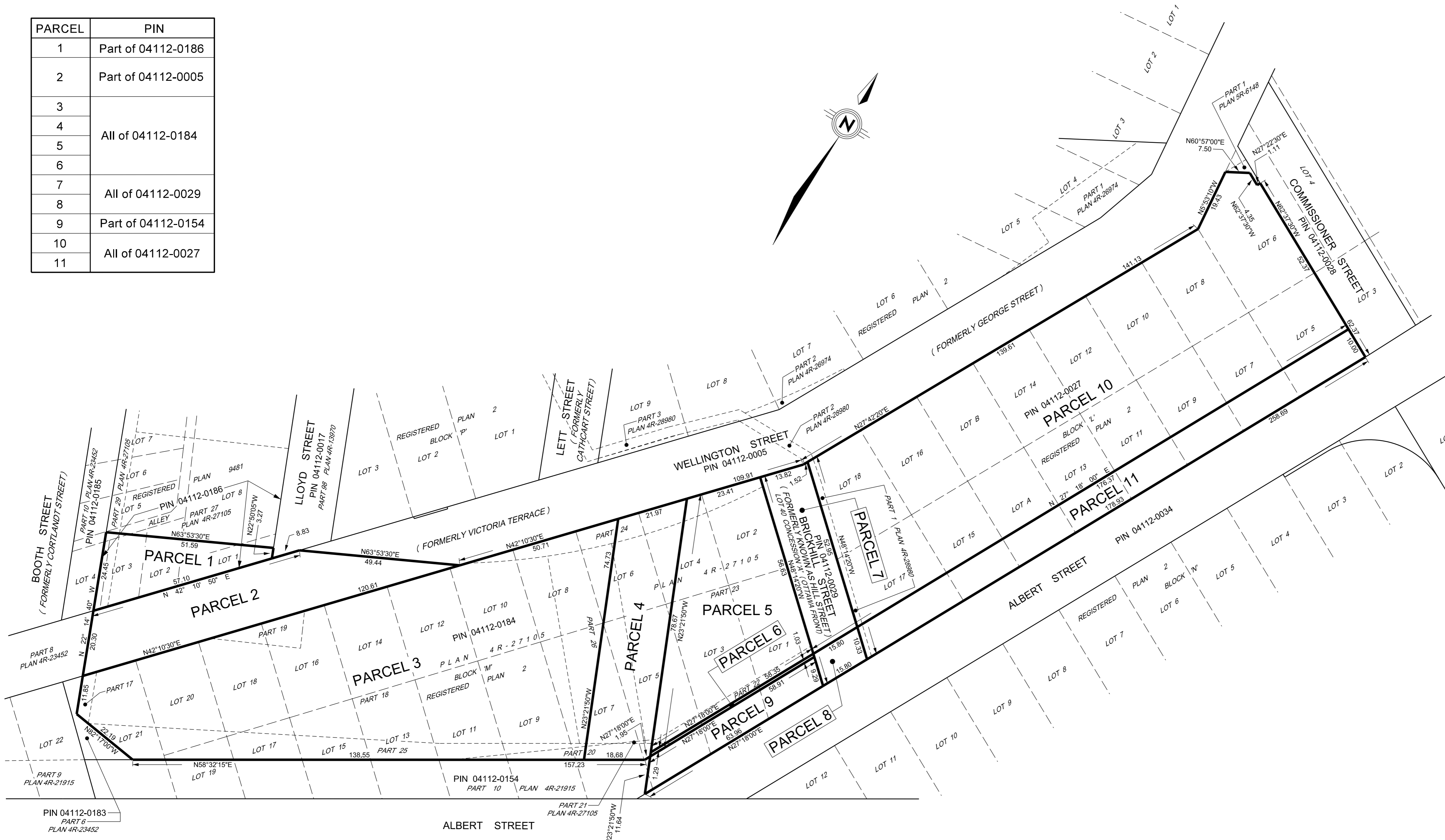


COMPILED PLAN SHOWING  
 LOT 5, PART OF LOT 6, LOTS 7 TO 18  
 (BOTH INCLUSIVE) AND LOTS 'A' AND 'B'  
 (BLOCK 'L'),  
 PART OF LOTS 1, 3, 5, 7, 9, 11, 13, 15, 17,  
 19 AND 21, LOTS 2, 4, 6, 8, 10, 12, 14, 16,  
 18 AND 20 (BLOCK 'M'),  
 PART OF WELLINGTON STREET  
 (FORMERLY VICTORIA TERRACE)  
 (AS CLOSED BY INST. LT1243128),  
 REGISTERED PLAN 2,  
 PART OF LOTS 1, 2, 3, 4, 8 AND PART OF  
 'ALLEY' (AS CLOSED BY INST. LT1243120),  
 REGISTERED PLAN 9481 AND  
 PART OF LOT 40,  
 CONCESSION 'A' (OTTAWA FRONT)  
 GEOGRAPHIC TOWNSHIP OF NEPEAN  
 CITY OF OTTAWA



**METRIC**  
 DISTANCES SHOWN ON THIS PLAN ARE IN METRES AND  
 CAN BE CONVERTED TO FEET BY DIVIDING BY 0.3048

**NOTE**  
 DIMENSIONS HEREON ARE COMPILED AND CALCULATED FROM PLANS 4R-28980, 4R-27105,  
 4R-26974, 4R-23452, 4R-21915 AND 5R-6148 AND ARE NOT BASED ON A FIELD SURVEY.



		INFRASTRUCTURE SERVICES DEPARTMENT SURVEYS & MAPPING UNIT
PROJECT : 557 & 584 WELLINGTON STREET	FIELD WORK BY :	
CALC'D BY :	FILE No. 19129	
C.A.D. BY : L. GUIBORD	MS No. 19129 COMPILED.dgn	
CHECKED BY : G. HARTWICK	DRAWING No.	
PEN TABLE :	DATE : MARCH 24, 2016	