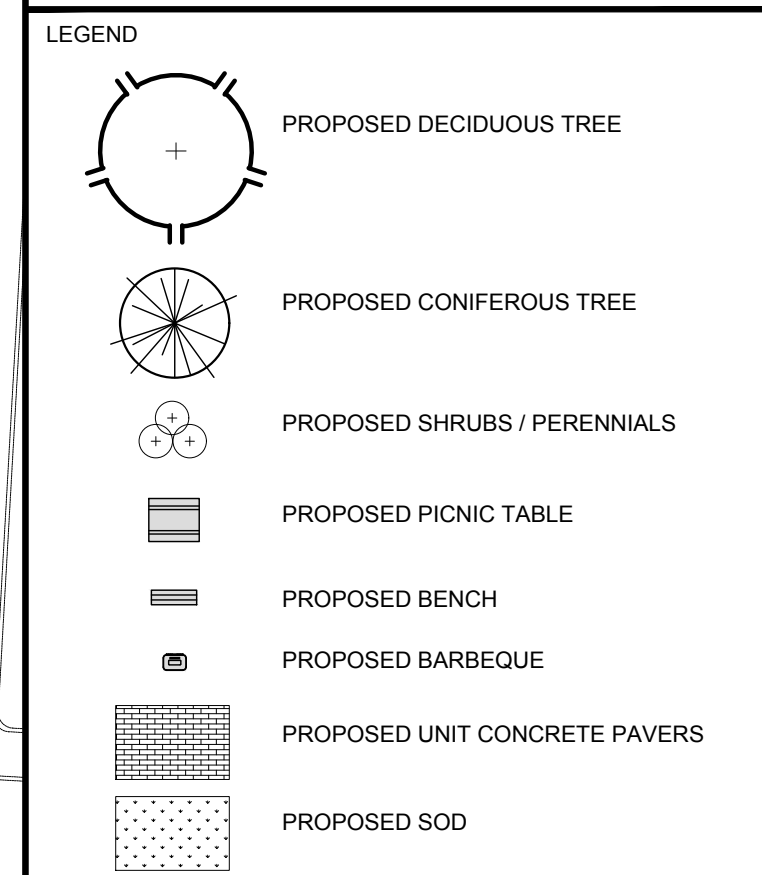
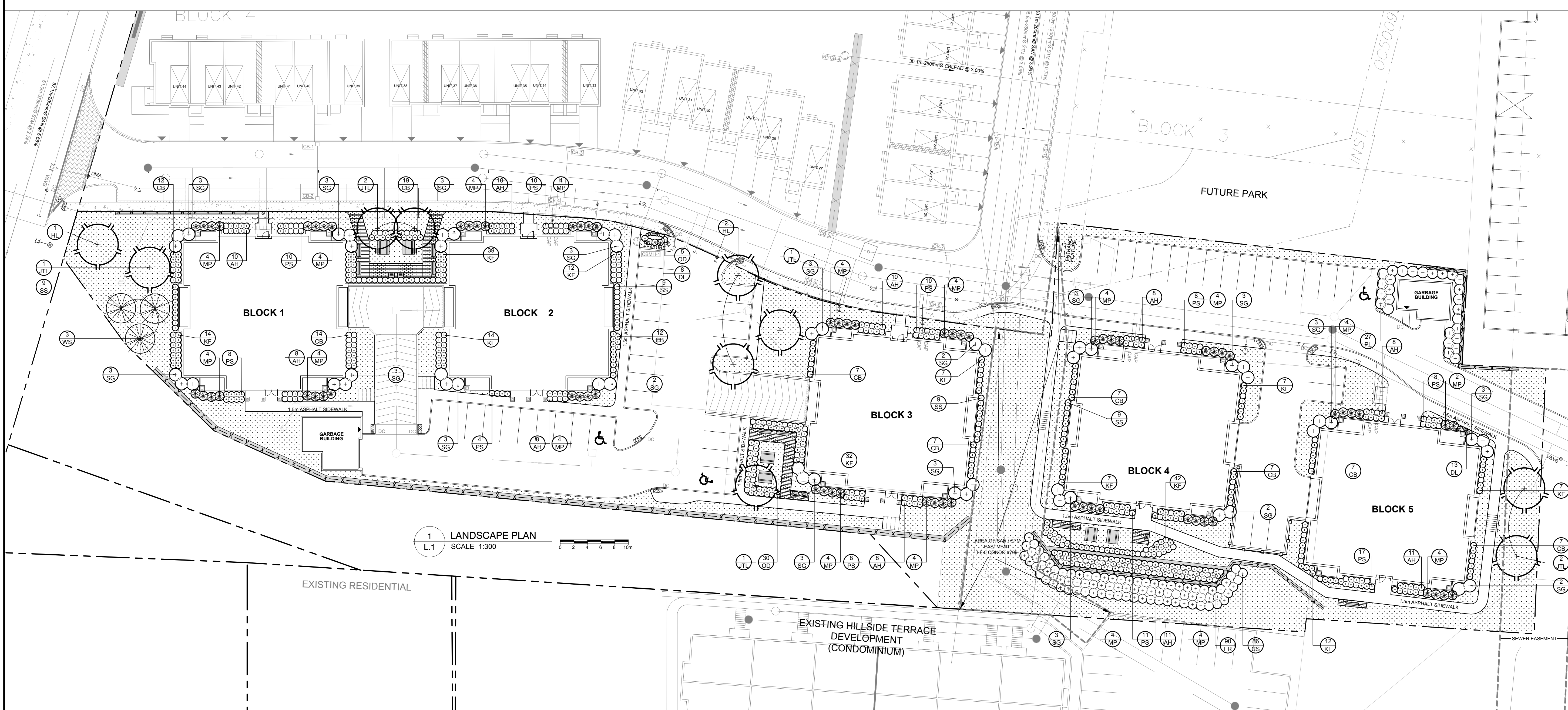


CLIENT:  
**PHOENIX HOMES**  
18A Bentley Avenue  
Ottawa, ON  
Tel: (613) 706-5537

CONSULTANTS  
ARCHITECTS: **M. David Blakely Architect Inc.**  
210 Corporation Rd., Suite 2, Ottawa, Ontario  
Phone: (613) 226-8811 Fax: (613) 226-7942

CIVIL ENGINEERS: **Novatech Engineering Consultants Ltd.**  
240 Michael Cowpland Dr., Suite 200  
Ottawa, ON  
Tel: (613) 224-8643



APPROVED  REFUSED

THIS \_\_\_\_ DAY OF \_\_\_\_\_, 20\_\_

JEFF MCEWEN, P. ENG., MANAGER  
DEVELOPMENT REVIEW, SUBURBAN SERVICES

1	ISSUED FOR SITE PLAN APPROVAL	12/14/2017	ML	JL
No.	Issue	Date	Drawn	DR
		mm/dd/yyyy		CK

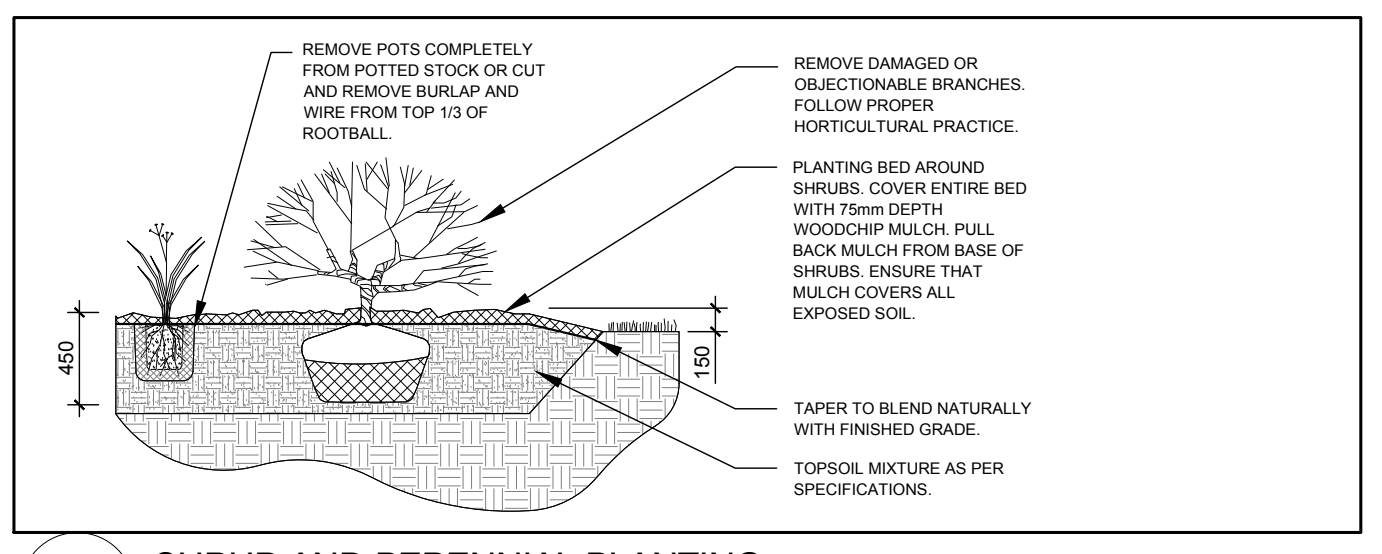
**JAMES B. LENNOX & ASSOCIATES INC.**  
LANDSCAPE ARCHITECTS  
3332 CARLING AVE. OTTAWA, ONTARIO K2H 5A8  
Tel: (613) 722-5168 Fax: (866) 343-3942

PROJECT  
241 ERIC CZAPNIK WAY  
OTTAWA, ONTARIO

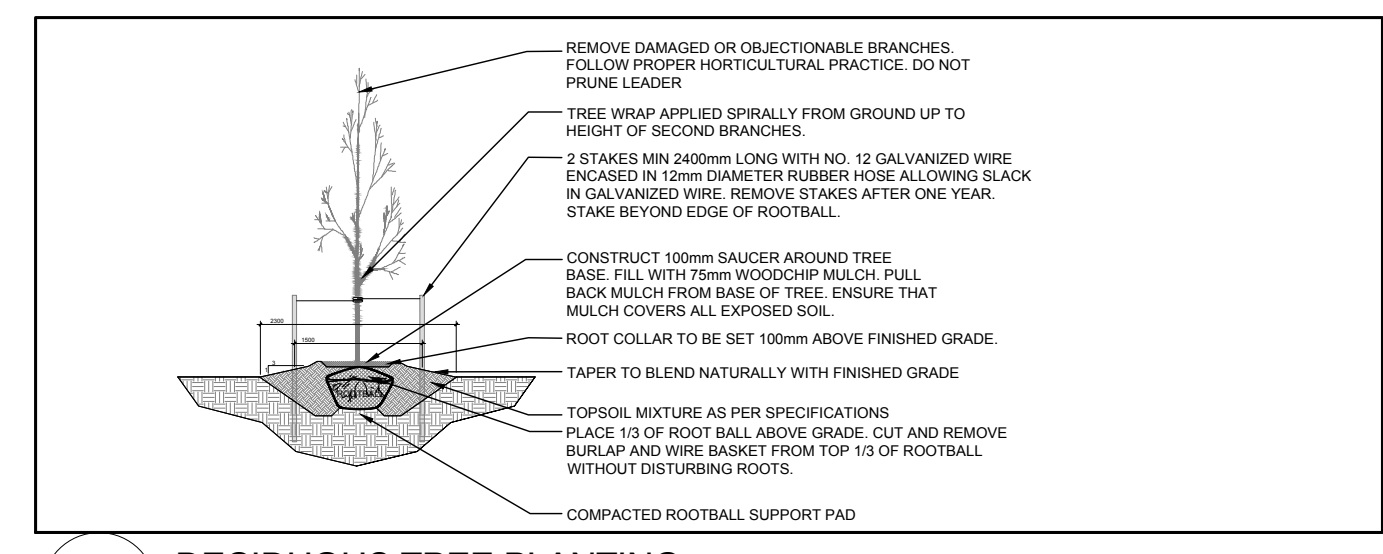
DRAWING  
LANDSCAPE PLAN

SCALE  
AS SHOWN  
START DATE  
23-JUNE-2016  
PROJECT NO.  
16MIS1643

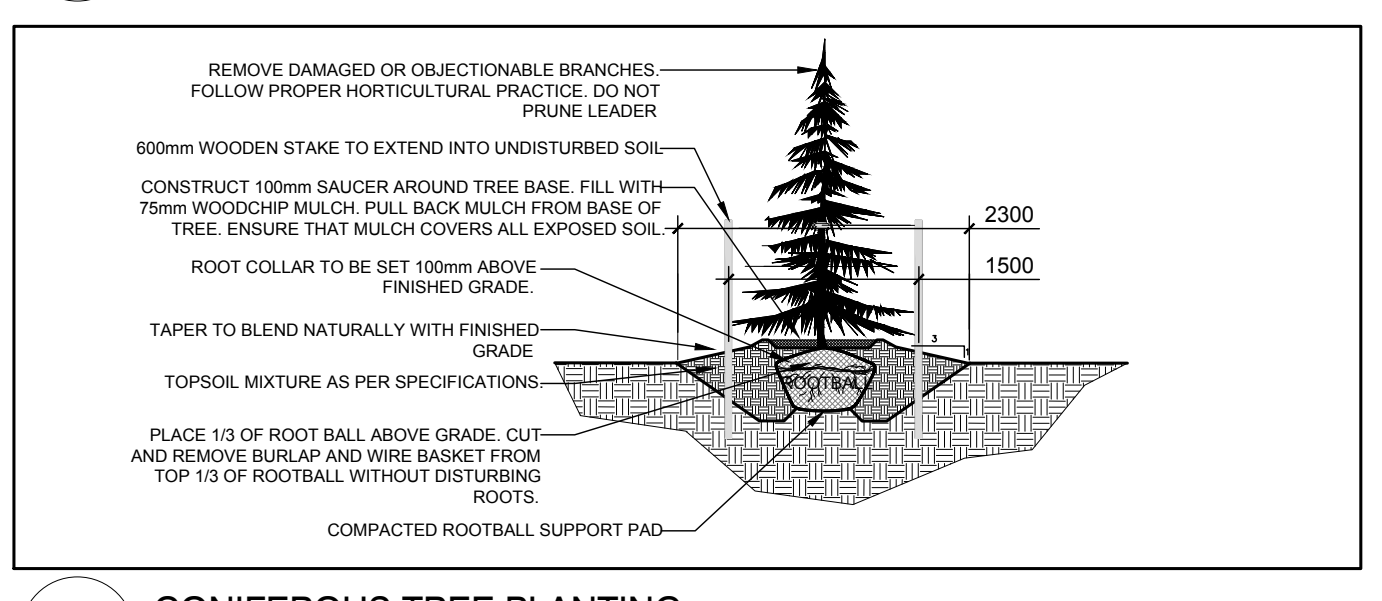
PROJECT NORTH  
DRAWING NO.  
**L.1**  
PLOT SIZE ARCH-D



**2 SHRUB AND PERENNIAL PLANTING**  
SCALE: NTS



**4 DECIDUOUS TREE PLANTING**  
SCALE: NTS



**3 CONIFEROUS TREE PLANTING**  
SCALE: NTS

PROPOSED PLANT LIST						
KEY	QTY	BOTANICAL NAME	COMMON NAME	SIZE	CONDITION	REMARKS
<b>TREES</b>						
HL	3	Gleditsia triacanthos	Honey Locust	60mm ø	B&B	
WS	3	Picea glauca	White Spruce	1800 mm ht.	B&B	
JTL	6	Syringa recticulata	Japanese Tree Lilac	60mm ø	B&B	
<b>SHRUBS</b>						
AH	92	Hydrangea arborescens 'Annabelle'	Annabelle Hydrangea	3 gal. pot	Potted	800 mm o.c.
CB	99	Physocarpus opulifolius 'Little Devil'	Little Devil Ninebark	600mm ht.	Potted	800 mm o.c.
MP	70	Pinus mugo 'Pumilio'	Dwarf Mugo Pine	600mm spr.	Potted	1200mm o.c.
FR	90	Rhus aromatica	Fragrant Sumac	600mm ht.	Potted	900 mm o.c.
CS	86	Rhus typhina 'Laciniata'	Cuttleaf Staghorn Sumac	800 mm ht.	Potted	1200 mm o.c.
PS	94	Spiraea japonica 'Little Princess'	Little Princess Spirea	600mm pot	Potted	800 mm o.c.
PL	27	Syringa vulgaris	Common Purple Lilac	1200mm ht.	Potted	1500 mm o.c.
<b>PERENNIALS</b>						
KF	193	Calamagrostis 'Karl Foerster'	Karl Foerster Grass	250mm pot	Potted	800 mm o.c.
OD	35	Calamagrostis x acutiflora 'Overdam'	Overdam Feather Reed Grass	250mm pot	Potted	800 mm o.c.
DL	21	Hemerocallis 'Stella D'Oro'	Stella D'Oro Day Lily	150mm pot	Potted	300 mm o.c.
SG	53	Panicum virgatum 'Heavy Metal'	Heavy Metal Switch Grass	250 mm pot	Potted	800 mm o.c.
SS	36	Panicum virgatum 'Squaw'	Squaw Switch Grass	250mm pot	Potted	750 mm o.c.

**GENERAL NOTES:**

- It is the responsibility of the appropriate contractor or official to report any errors, omissions or discrepancies on this plan with actual site conditions to the Landscape Architect before proceeding with construction.
- The contractor is to notify all utility companies and authorities prior to any excavation and ascertain locations of underground services.
- The contractor is to reinstatement all areas and items damaged as a result of construction activity.
- The contractor is to comply with all pertinent codes and by-laws.
- The contractor is to maintain a positive surface run-off throughout the entire construction period.
- The Landscape Architect is not responsible for subsurface conditions.
- The contractor is to identify all existing trees to remain on site with the Landscape Architect prior to construction.
- The contractor is to stake the proposed location of all plant material in conjunction with the Landscape Architect prior to excavation.
- Minimum distances for selected deciduous trees are as follows:
  - Building Foundations 45m inside of property line
  - Sidewalks 1.5m
  - Public Streets 2.5m
  - Underground Infrastructure 2.0m
- All trees within 1m of underground utility trenches are to be excavated by hand.
- Remove all protective wrapping from tree trunks after installation.
- Staking of trees shall only be performed if necessary.
- Ensure that mulch is pulled back a min. distance of 75mm from base of tree trunk.