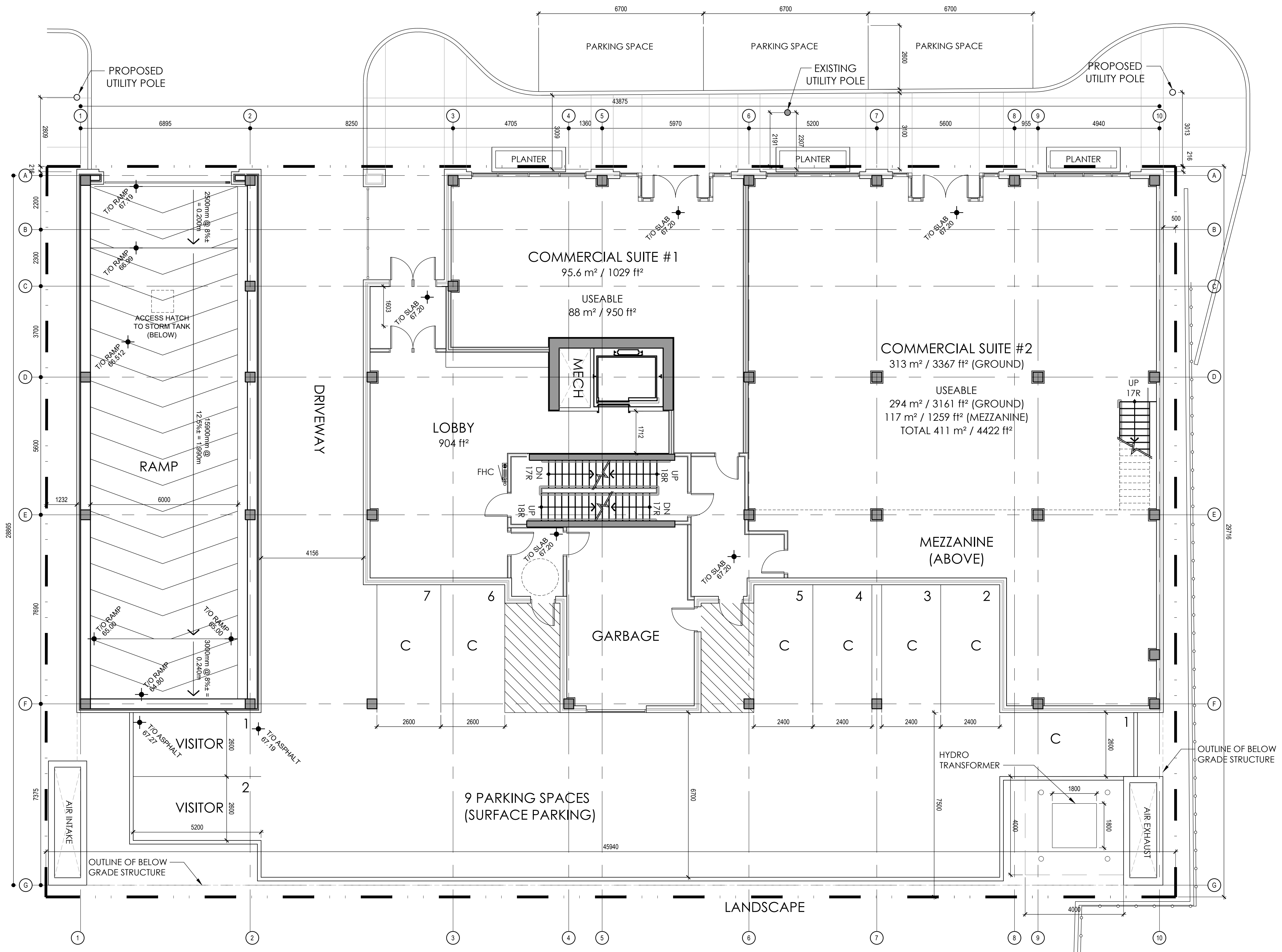


ROOSEVELT AVE.

It is the responsibility of the appropriate Contractor to check and verify all dimensions on site and report all errors and/or omissions to the Architect.  
 All Contractors must comply with all pertinent codes and by-laws.  
 All dimensions are measured from face of stud to face of stud unless indicated otherwise.  
 Do not scale drawings.  
 This drawing may not be used for construction until signed.



02 DEC 15 2017 ISSUED FOR SITE PLAN CONTROL  
 01 NOV 29 2017 ISSUED FOR REVIEW

no	date	revision

project north

professional stamp

**ALCAIDE WEBSTER**  
 ARCHITECTS INC  
 202-1320 Carling Avenue  
 Ottawa, ON K1Z 7K8 www.awa-arch.ca

ARCHITECTURE PLANNING  
 DESIGN BUILD PROJECT MANAGEMENT

consultant SURVEYOR - ANNIS O'SULLIVAN VOLLEBEKK LTD.  
 LANDSCAPE ARCHITECT - GINO J. AIELLO  
 CIVIL - DAVID SCHAEFFER ENGINEERING LTD.  
 PLANNING - FOTENN CONSULTANTS INC.  
 TRAFFIC - DST CONSULTING ENGINEERING  
 GEO-TECHNICAL - PATERSON GROUP

project  
**406 ROOSEVELT**  
 DOMICILE DEVELOPMENTS  
 406 ROOSEVELT STREET.  
 OTTAWA, ON

drawn MH	checked VA
-------------	---------------

date DEC 15 2017	project no. 17-15
---------------------	----------------------

drawing title  
**GROUND FLOOR PLAN**

revision 02	drawing no. <b>A110</b>
----------------	----------------------------

**1 GROUND FLOOR**  
 SCALE 1:75

DEC 15, 2017