



1 EAST ELEVATION – FACING ROOSEVELT AVE.

SCALE 1:100



2 WEST ELEVATION – REAR ELEVATION

SCALE 1:100

It is the responsibility of the appropriate Contractor to check and verify all dimensions on site and report all errors and/or omissions to the Architect.
All Contractors must comply with all pertinent codes and by-laws.
All dimensions are measured from face of stud to face of stud unless indicated otherwise.
Do not scale drawings.
This drawing may not be used for construction until signed.

02 DEC 15 2017 ISSUED FOR SITE PLAN CONTROL
01 NOV 29 2017 ISSUED FOR REVIEW

no	date	revision

project north

professional stamp

ALCAIDE
WEBSTER
ARCHITECTS INC
202-1320 Carling Avenue
Ottawa, ON K1Z 7K8 www.awa-arch.ca
ARCHITECTURE PLANNING
DESIGN BUILD PROJECT MANAGEMENT

consultant
SURVEYOR - ANNIS O'SULLIVAN VOLLEBEKK LTD.
LANDSCAPE ARCHITECT - GINO J. AIELLO
CIVIL - DAVID SCHAEFFER ENGINEERING LTD.
PLANNING - FOTENNI CONSULTANTS INC.
TRAFFIC - DST CONSULTING ENGINEERING
GEO-TECHNICAL - PATERSON GROUP

project

406 ROOSEVELT
DOMICILE DEVELOPMENTS
406 ROOSEVELT STREET.
OTTAWA, ON

drawn
MH

checked
VA

date
DEC 15 2017

project no.
17-15

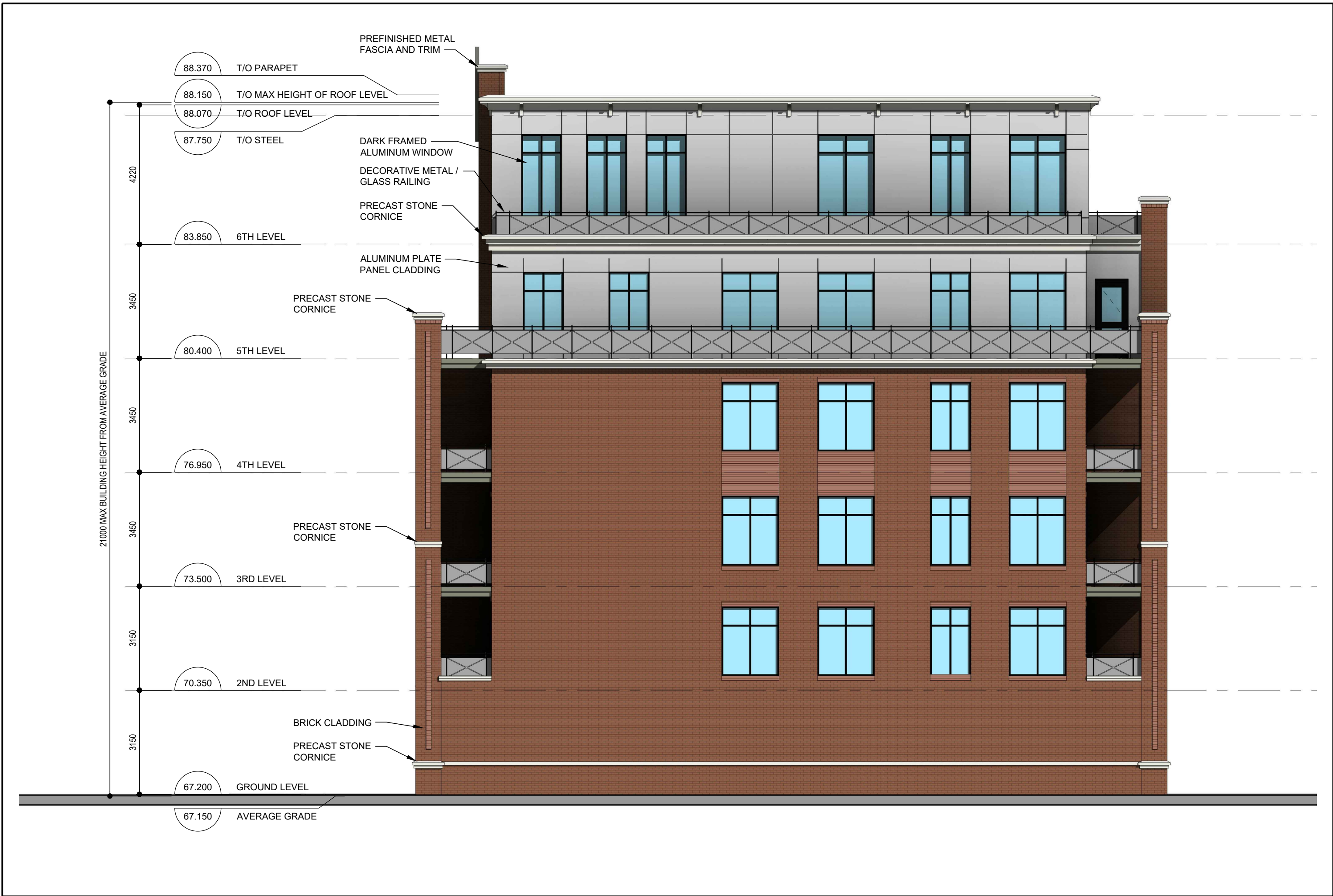
drawing title

EAST AND WEST
ELEVATIONS

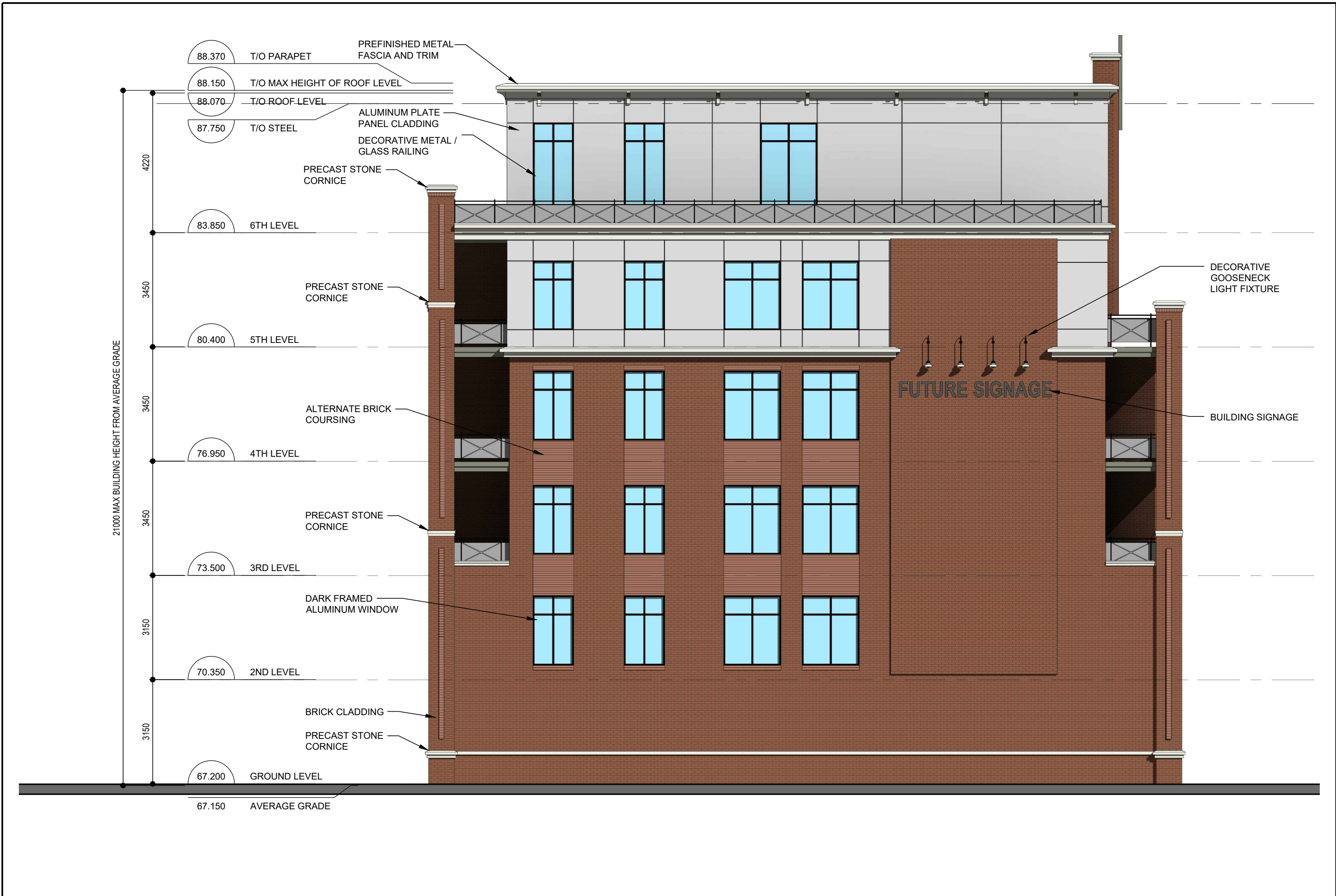
revision
02

drawing no.

A301



1 NORTH ELEVATION
SCALE 1:100



2 SOUTH ELEVATION - FACING RICHMOND ROAD
SCALE 1:100

It is the responsibility of the appropriate Contractor to check and verify all dimensions on site and report all errors and/or omissions to the Architect.
All Contractors must comply with all pertinent codes and by-laws.
All dimensions are measured from face of stud to face of stud unless indicated otherwise.
Do not scale drawings.
This drawing may not be used for construction until signed.

02 DEC 15 2017 ISSUED FOR SITE PLAN CONTROL
01 NOV 29 2017 ISSUED FOR REVIEW

no	date	revision
----	------	----------

project north	professional stamp
---------------	--------------------

ALCAIDE
WEBSTER
ARCHITECTS INC
202-1320 Carling Avenue
Ottawa, ON K1Z 7K8 www.awa-arch.ca
ARCHITECTURE PLANNING
DESIGN BUILD PROJECT MANAGEMENT

consultant
SURVEYOR - ANNIS O'SULLIVAN VOLLEBEKK LTD.
LANDSCAPE ARCHITECT - GINO J. AIELLO
CIVIL - DAVID SCHAEFFER ENGINEERING LTD.
PLANNING - FOTENN CONSULTANTS INC.
TRAFFIC - DST CONSULTING ENGINEERING
GEO-TECHNICAL - PATERSON GROUP

project
406 ROOSEVELT
DOMICILE DEVELOPMENTS
406 ROOSEVELT STREET.
OTTAWA, ON

drawn MH	checked VA
-------------	---------------

date DEC 15 2017	project no. 17-15
---------------------	----------------------

drawing title
NORTH AND SOUTH
ELEVATIONS

revision 02	drawing no. A302
----------------	----------------------------