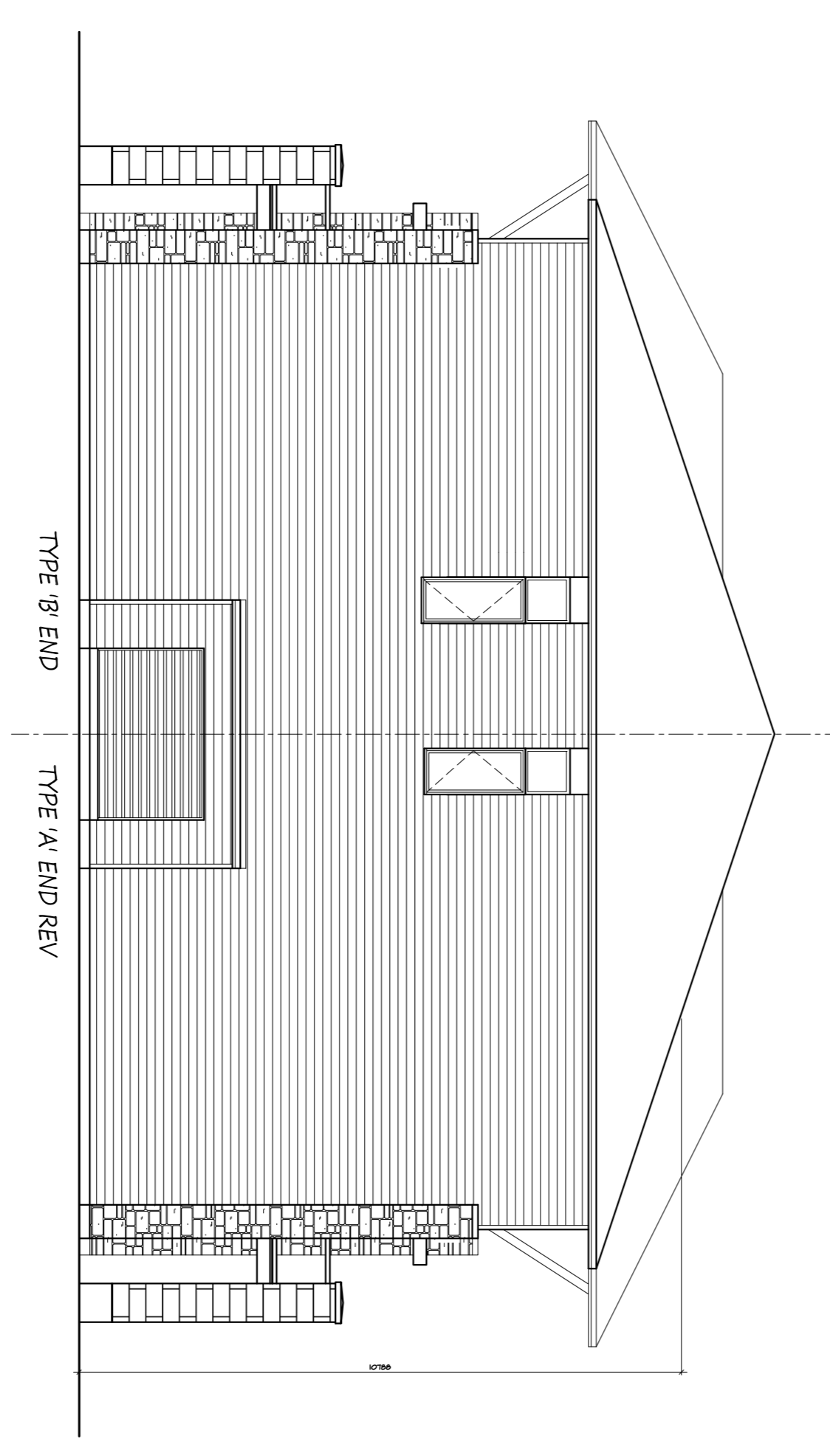




SOUTH ELEVATION

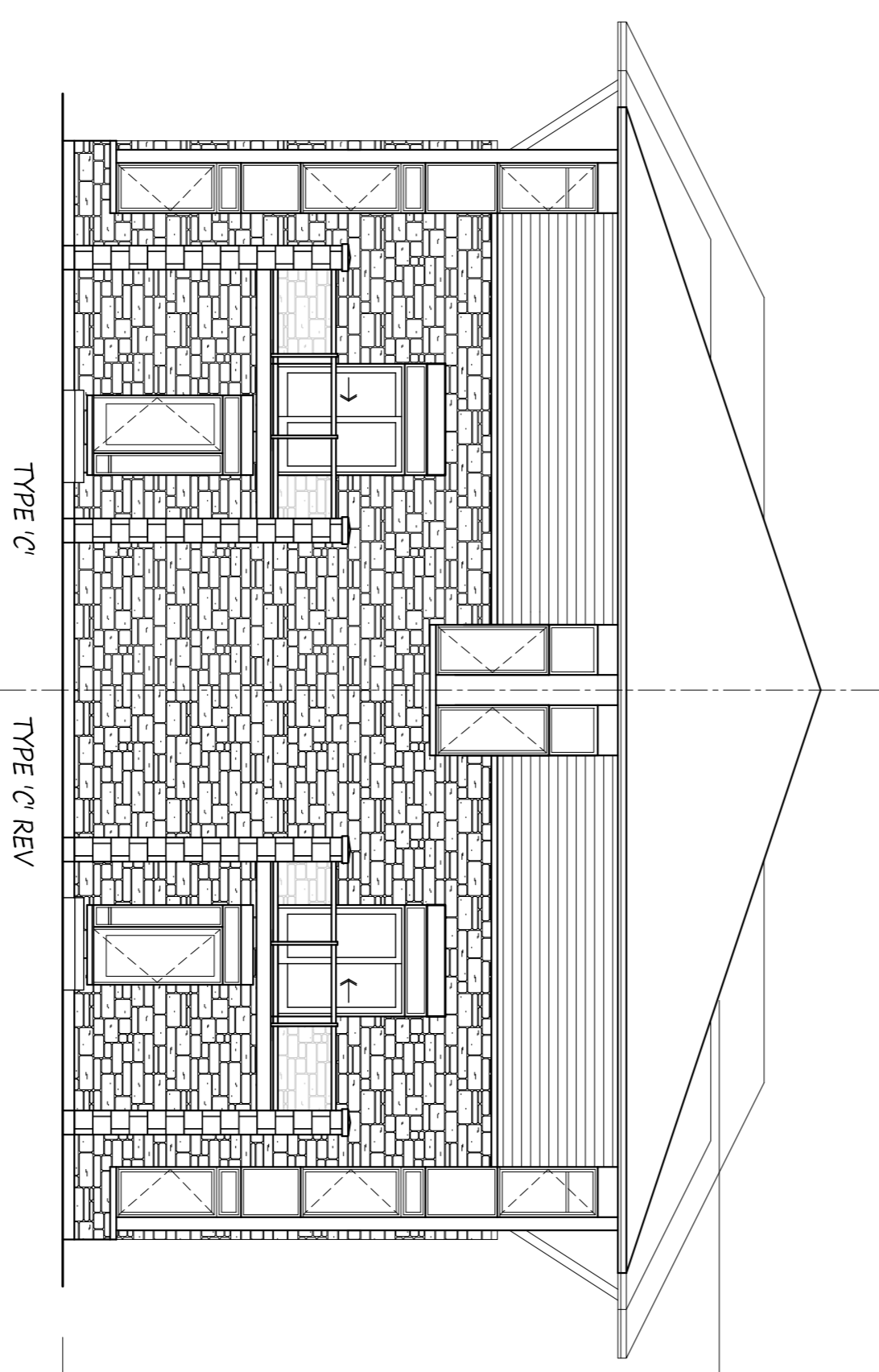


WEST ELEVATION

	DATE DRAWN: NOV 27/17	CARDINAL CREEK WILDS QUARTZ TOWNS CAP-DIAMANT WAY	ELEVATION PLAN, E-STAR BLOCK 105
	DRAWN: MJB		
	CHECKED: DJ		
	SCALE: 1/8"=1'-0"		
<small>SECTION 21: BLOCK ELEVATION FOR BE-ZONING-105</small>			
A-1			



NORTH ELEVATION



EAST ELEVATION

	DATE DRAWN: NOV 27/17	CARDINAL CREEK WILDS SHELBY TOWNS CAP-DIAMANT WAY	ELEVATION PLAN, E-STAR BLOCK 105
	DRAWN: MJB		
	SCALE: 1/8"=1'-0"		

FIG. 01: BLOCK ELEVATION FOR RECORD DRAWING
A-2