

SURVEYOR'S REAL PROPERTY REPORT
PART 1 Plan of
PART OF LOT 2
REGISTERED PLAN 272
AND
PART OF LOT 31
CONCESSION 1 (OTTAWA FRONT)
Geographic Township of Nepean
CITY OF OTTAWA
 Surveyed by Annis, O'Sullivan, Vollebek Ltd.

Scale 1 : 150

Metric
 DISTANCES SHOWN ON THIS PLAN ARE IN METRES AND CAN BE CONVERTED TO FEET BY DIVIDING BY 0.3048

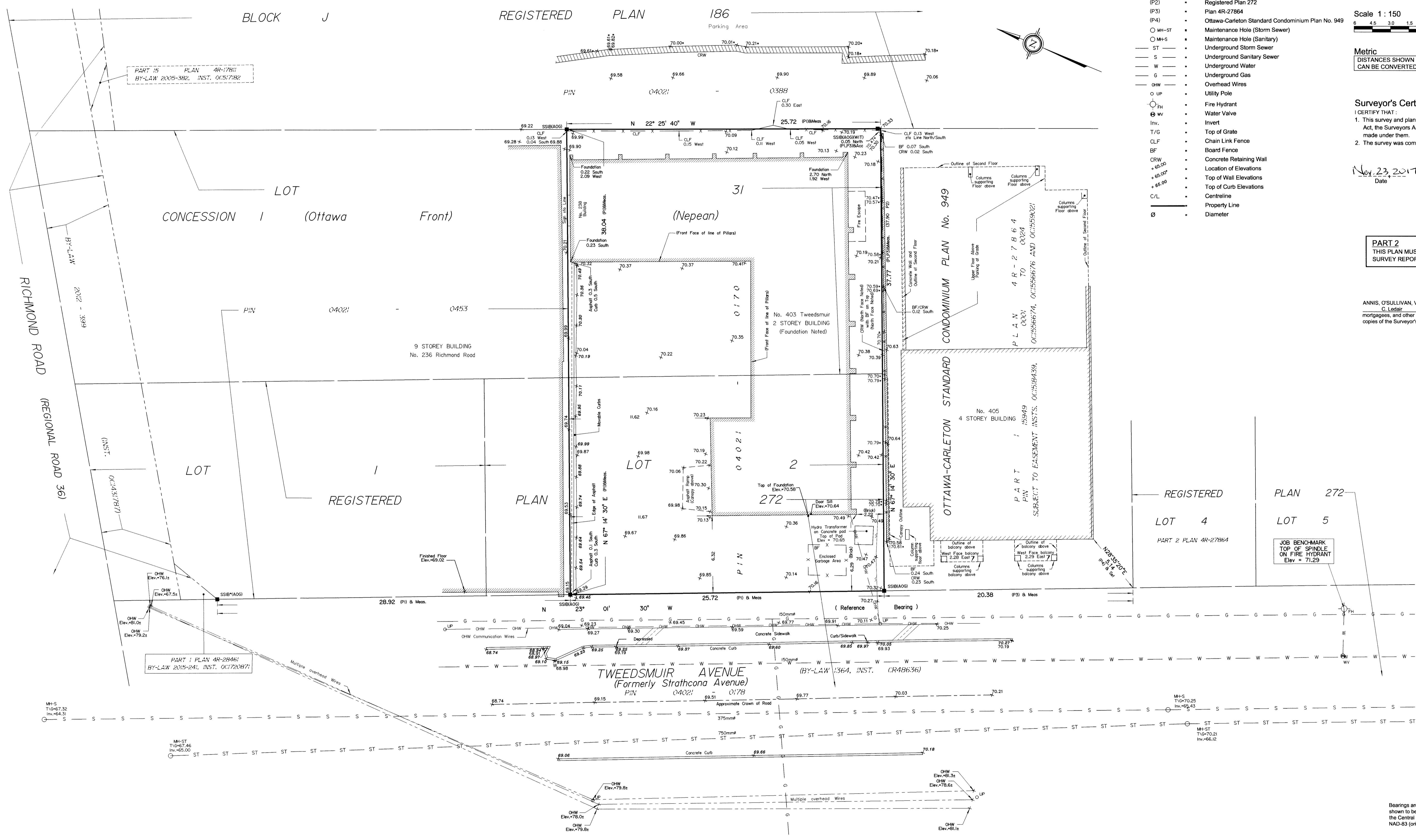
Surveyor's Certificate
 I CERTIFY THAT:
 1. This survey and plan are correct and in accordance with the Surveys Act, the Surveyors Act and the Land Titles Act and the regulations made under them.
 2. The survey was completed on the 13th day of November, 2017.
 Date: Nov 23 2017
 E. H. Harvender
 Ontario Land Surveyor

PART 2
 THIS PLAN MUST BE READ IN CONJUNCTION WITH SURVEY REPORT DATED: November 23, 2017

ANNIS, O'SULLIVAN, VOLLEBEK LTD. grants to C. Leslie (The Client), their solicitors, mortgagees, and other related parties, permission to use original, signed, sealed copies of the Surveyor's Real Property Report in transactions involving The Client.

Notes & Legend

- Denotes**
- Survey Monument Planted
 - Survey Monument Found
 - SIB Standard Iron Bar
 - SSIB Short Standard Iron Bar
 - IB Iron Bar
 - Survey Monument 0.30 Long
 - (WIT) Witness
 - Meas. Measured
 - Acc. Accepted
 - (AOG) Annis, O'Sullivan, Vollebek Ltd.
 - (P1) Plan 4R-28461
 - (P2) Registered Plan 272
 - (P3) Plan 4R-27864
 - (P4) Ottawa-Carleton Standard Condominium Plan No. 949
 - MH-ST Maintenance Hole (Storm Sewer)
 - MH+S Maintenance Hole (Sanitary)
 - ST — Underground Storm Sewer
 - S — Underground Sanitary Sewer
 - W — Underground Water
 - G — Underground Gas
 - OHW — Overhead Wires
 - UP Utility Pole
 - FH Fire Hydrant
 - WV Water Valve
 - Inv. Invert
 - T/G Top of Grate
 - CLF Chain Link Fence
 - BF Board Fence
 - CRW Concrete Retaining Wall
 - Location of Elevations
 - Top of Wall Elevations
 - Top of Curb Elevations
 - /L Centreline
 - Property Line
 - ∅ Diameter



ASSOCIATION OF ONTARIO
 LAND SURVEYORS
 PLAN SUBMISSION FORM
 2039253

 THIS PLAN IS NOT VALID UNLESS IT IS AN EMBOSSED ORIGINAL COPY ISSUED BY THE SURVEYOR in accordance with Regulation 1026, Section 29 (3).

Bearings are grid, derived from the easterly limit of Tweedsmuir Avenue, shown to be N23°01'30"W on Plan 4R-28461 and are referred to the Central Meridian of MTM Zone 9 (76°30' West Longitude) NAD-83 (original).