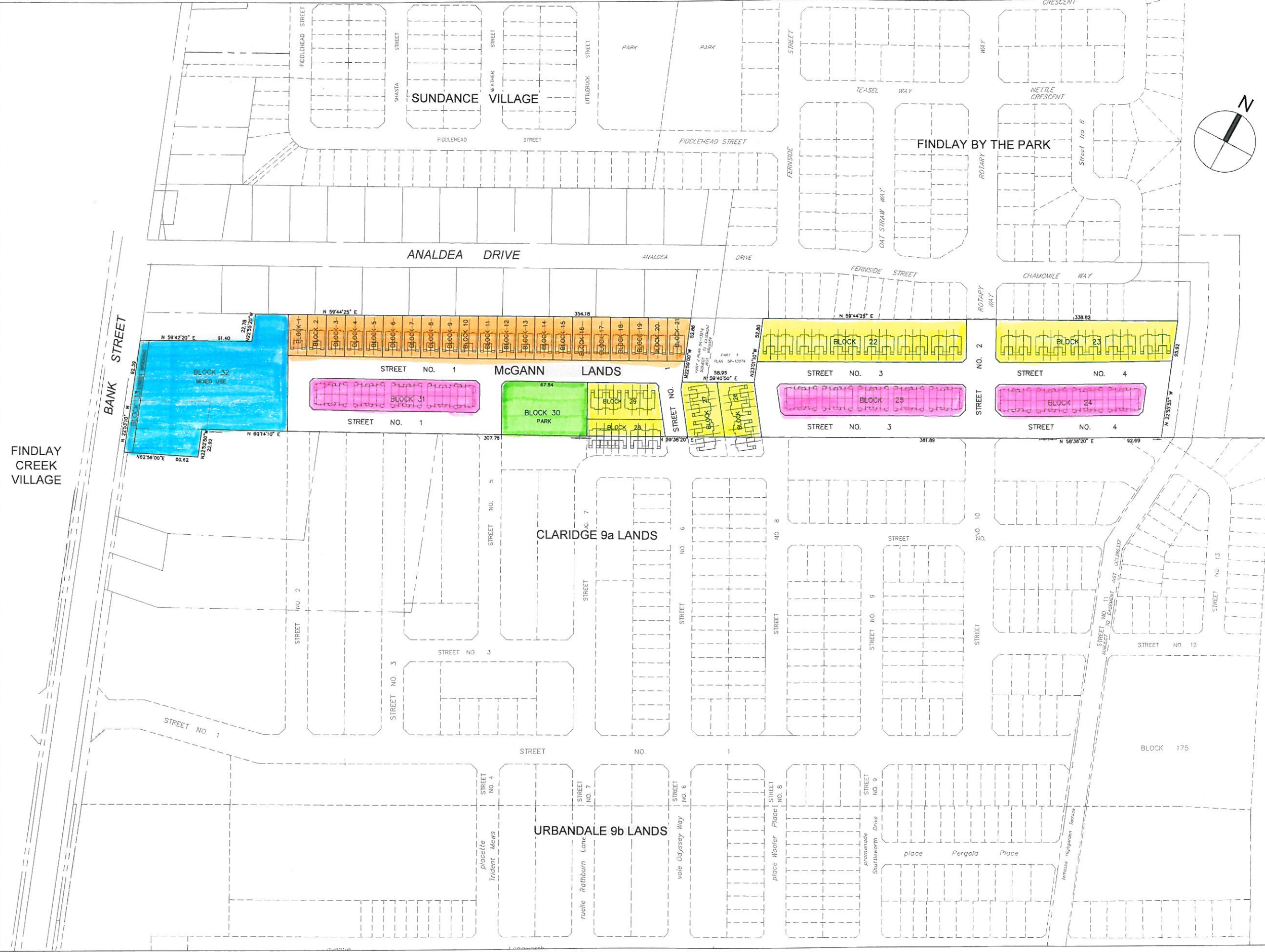


I:\05202_Leitrim9A\5.9 Drawings\59civ\current\Assessment of Adequacy Figures\FIGURE 1.3 DRAFT PLAN.dwg Layout Name: Fig 1.3 Plot Style: --- Plot Scale: 1:2,5849 Plotted At: 6/14/2017 8:25 AM Last Saved By: rmline Last Saved At: 6/13/17



**DRAFT PLAN OF SUBDIVISION OF
PART OF LOTS 18
CONCESSION 5 (RIDEAU FRONT)
Geographic Township of Gloucester
CITY OF OTTAWA**
Prepared by Annis, O'Sullivan, Vollebek Ltd

Metric
DISTANCES SHOWN ON THIS PLAN ARE IN METRES AND
CAN BE CONVERTED TO FEET BY DIVIDING BY 0.3048

SURVEYOR'S CERTIFICATE
I CERTIFY THAT
The boundaries of the lands to be subdivided and their relationship
to adjoining lands have been accurately and correctly shown
Date: _____
Edward M. Lancaster
ONTARIO LAND SURVEYOR

OWNER'S CERTIFICATE
This is to certify that we are the owners of the lands to be subdivided and that this
plan was prepared in accordance with our instructions.
Date: July 20, 2018

- ADDITIONAL INFORMATION REQUIRED UNDER
SECTION 51-17 OF THE PLANNING ACT**
- (1) see plan
 - (2) see plan
 - (3) see plan
 - (4) see plan
 - (5) see plan
 - (6) see plan
 - (7) see plan
 - (8) see plan
 - (9) see plan
 - (10) see plan
 - (11) City of Ottawa
 - (12) see soils report
 - (13) see plan
 - (14) sanitary storm sewers, municipal water, bell, hydro, cable and gas to be available
 - (15) see plan

ANNIS, O'SULLIVAN, VOLLEBEK LTD
14 Carleton Drive, Suite 100
Ottawa, Ontario K1N 6K5
Phone: (613) 775-0000 Fax: (613) 771-1070
www.anniso.com

IBI

N.T.S.

Scale _____

Project Title
**4747 and 4755 Bank Street
Claridge Homes**

Drawing Title
Proposed Development

Sheet No. _____