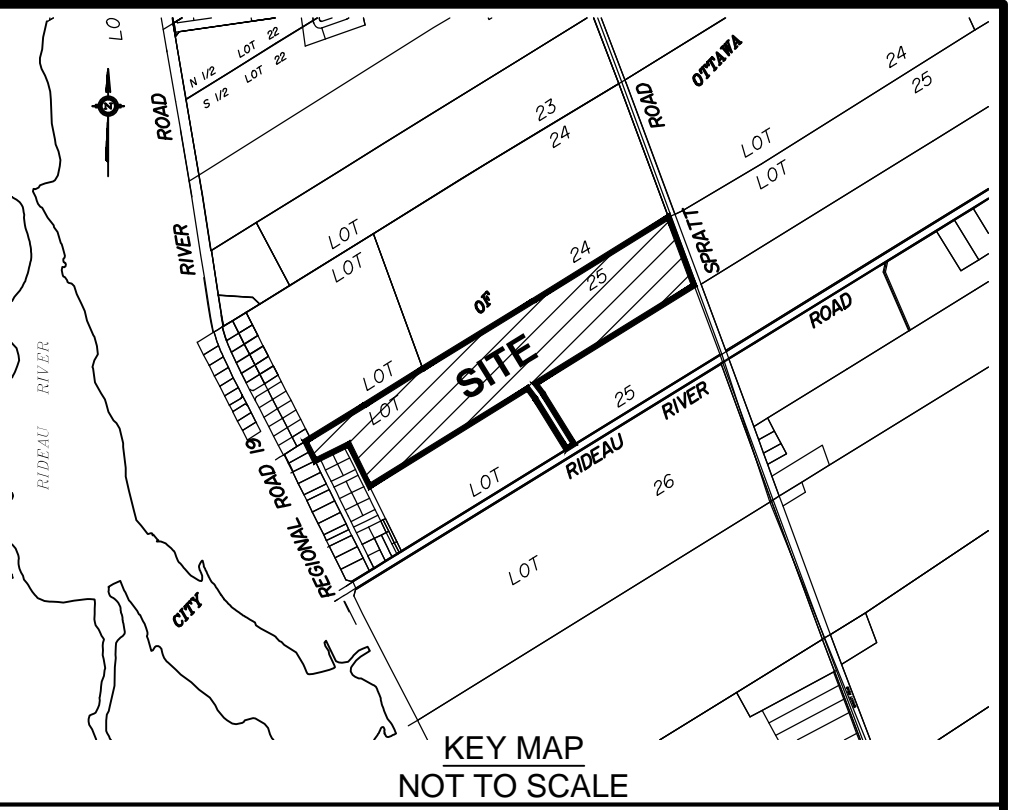


SUBJECT TO THE CONDITIONS, IF ANY, SET FORTH IN OUR LETTER DATED \_\_\_\_\_

THIS DRAFT PLAN IS APPROVED BY THE CITY OF OTTAWA UNDER SECTION 51 OF THE PLANNING ACT THIS \_\_\_\_\_ DAY OF \_\_\_\_\_ 20\_\_.

--- DON HERVEYER, MCIP RPP, MANAGER ---  
DEVELOPMENT REVIEW-SOUTH  
PLANNING, INFRASTRUCTURE AND ECONOMIC  
DEVELOPMENT DEPARTMENT, CITY OF OTTAWA



**DRAFT PLAN OF SUBDIVISION OF PART OF LOT 25 BROKEN FRONT CONCESSION ( RIDEAU FRONT )**  
Geographic Township of Gloucester  
**CITY OF OTTAWA**  
Prepared by Annis, O'Sullivan, Vollebakk Ltd.

Scale 1: 1250  
0 12.5 25 37.5 50 Metres

Metric  
DISTANCES SHOWN ON THIS PLAN ARE IN METRES AND CAN BE CONVERTED TO FEET BY DIVIDING BY 0.3048

**SURVEYOR'S CERTIFICATE**  
I CERTIFY THAT:  
The boundaries of the lands to be subdivided and their relationship to adjoining lands have been accurately and correctly shown.

Date \_\_\_\_\_ Edward M. Lancaster  
ONTARIO LAND SURVEYOR

**OWNER'S CERTIFICATE**  
This is to certify that I am the owner / agent of the lands to be subdivided and that this plan was prepared in accordance with my instructions.

Date \_\_\_\_\_ Greg Graham  
2356349 Ontario, Inc ( Cardel Homes )  
I have the authority to bind the corporation

**ADDITIONAL INFORMATION REQUIRED UNDER SECTION 51-17 OF THE PLANNING ACT**  
(a) see plan  
(b) see plan  
(c) see plan  
(d) single & multi-family residential housing, open space, parkland  
(e) see plan  
(f) see plan  
(g) see plan  
(h) City of Ottawa  
(i) see soils report  
(j) see plan  
(k) sanitary, storm sewers, municipal water, bell, hydro, cable and gas to be available  
(l) see plan