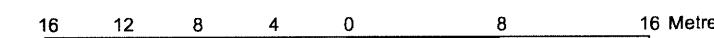


Bearings are astronomic, derived from the easterly limit of Bell Street North, shown to be N23°00'00"W on a Plan by (AOG) dated May 1, 2013.

SITE AREA = 6635 m²

BOUNDARY INFORMATION COMPILED FROM PLAN BY (AOG) DATED MAY 1, 2013.

Scale 1 : 400



Metric

DISTANCES SHOWN ON THIS PLAN ARE IN METRES AND CAN BE CONVERTED TO FEET BY DIVIDING BY 0.3048

TOPOGRAPHICAL PLAN OF

LOTS 3 TO 14 (Both Inclusive) (East Bell Street North, North of the Boundary Stone) AND PART OF THE RESERVE REGISTERED PLAN 33A CITY OF OTTAWA

Prepared by Annis, O'Sullivan, Vollebakk Ltd. Field Work Completed June 23, 2014

Date 9/14

V. Andrew Shelp, O.L.S.

Notes & Legend

- Denotes
- MH-ST Maintenance Hole (Storm Sewer)
 - MH-H Maintenance Hole (Hydro)
 - P — Underground Power
 - G — Underground Gas
 - FO — Underground Fibre Optic
 - B — Underground Bell
 - OHW — Overhead Wires
 - CB Catch Basin
 - ⊗ WV Water Valve
 - SP Water Stand Post
 - ⊗ VC Valve Chamber (Watermain)
 - T/G Top of Grate
 - GM Gas Meter
 - Deciduous Tree
 - B Bollard
 - △ S Sign
 - CLF Chain Link Fence
 - BF Board Fence
 - Gate
 - ∅ Diameter
 - + 65.00 Location of Elevations
 - C/L Centreline
 - Property Line

ELEVATION NOTES

- Elevations shown are geodetic and are referred to the CGVD28 geodetic datum.
- It is the responsibility of the user of this information to verify that the job benchmark has not been altered or disturbed and that its relative elevation and description agrees with the information shown on this drawing.

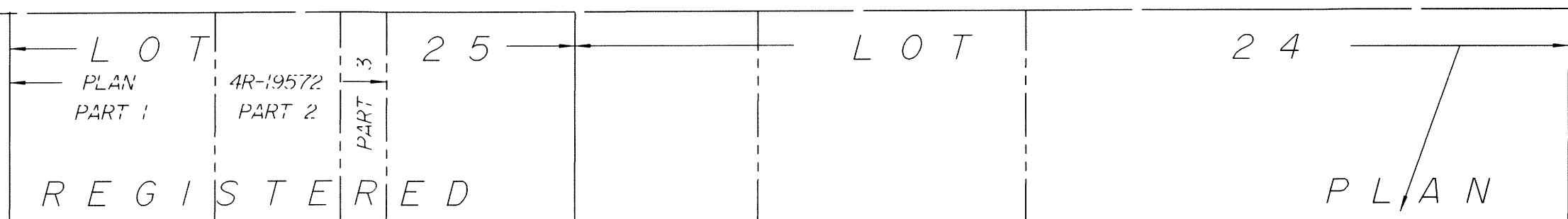
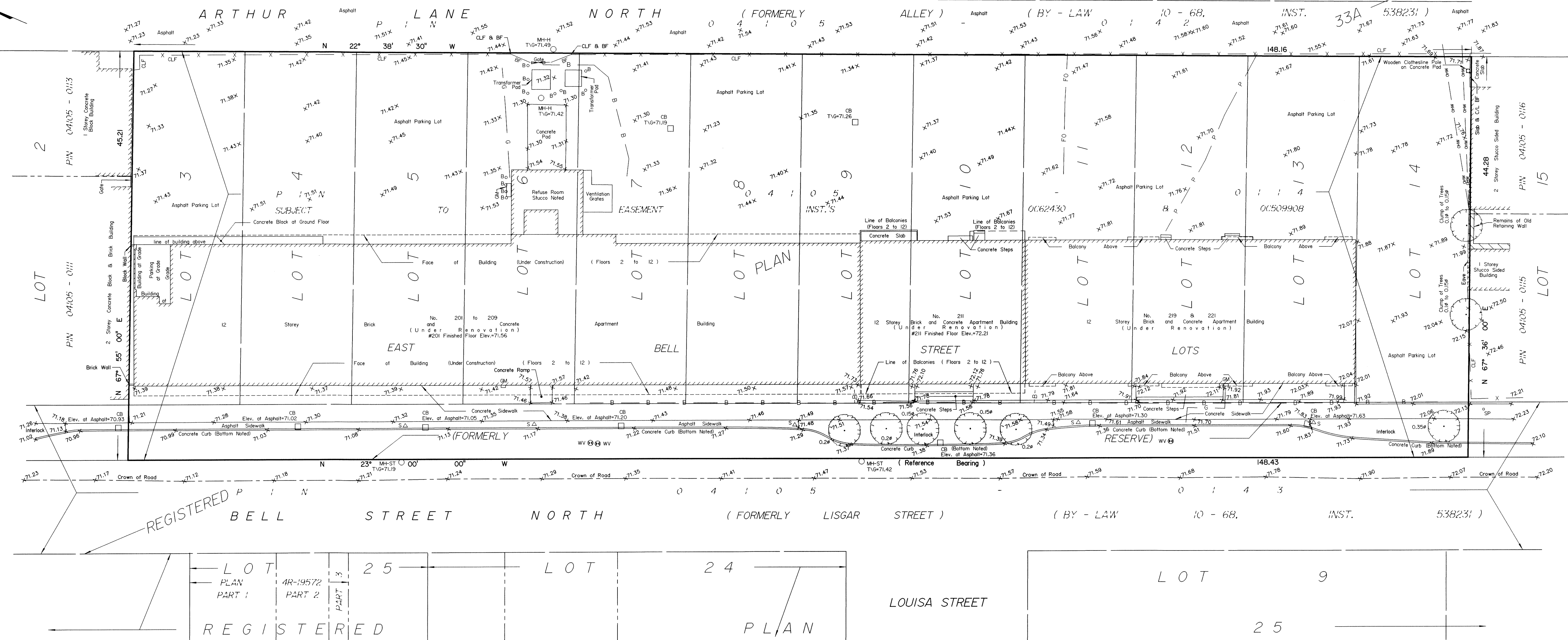
UTILITY NOTES

- This drawing cannot be accepted as acknowledging all of the utilities and it will be the responsibility of the user to contact the respective utility authorities for confirmation.
- Only visible surface utilities were located.
- A field location of underground plant by the pertinent utility authority is mandatory before any work involving breaking ground, probing, excavating etc.

© Annis, O'Sullivan, Vollebakk Ltd. 2014. THIS PLAN IS PROTECTED BY COPYRIGHT

ANNIS, O'SULLIVAN, VOLLEBEKK LTD.
 14 Concourse Gate, Suite 500
 Nepean, Ont. K2E 7S6
 Phone: (613) 727-0850 / Fax: (613) 727-1079
 Email: Nepean@aovltd.com

Ontario Land Surveyors Job No. 15007-14 CLV Group L133-14 RP33A T F



LOUISA STREET

25

PLAN