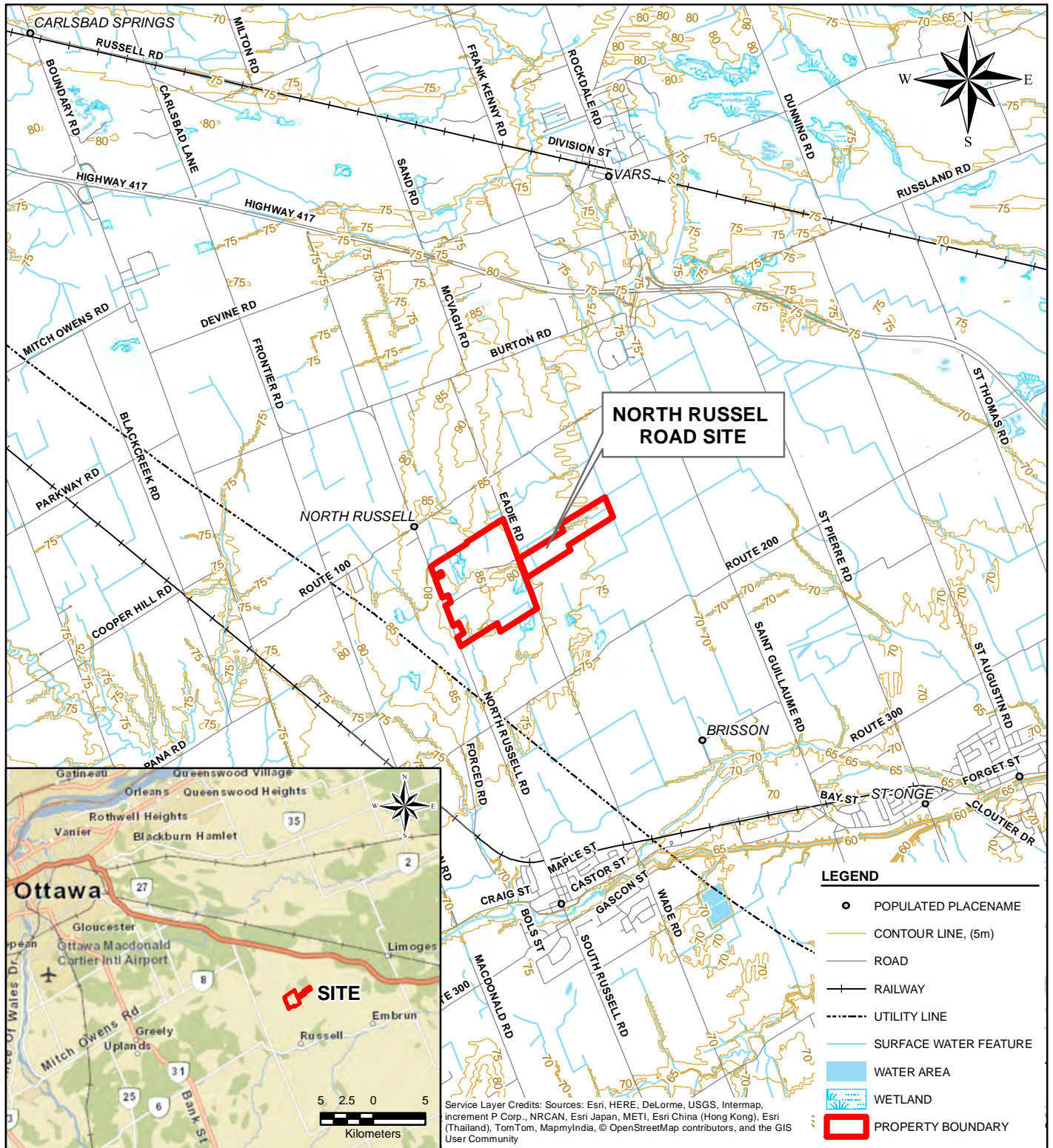




9.0 MAPS



DATE	FEB. 2013
DESIGN	TR
GIS	BR
CHECK	EW
REVIEW	HJD

TITLE

KEY PLAN

PROJECT No. 12-1125-0045

SCALE AS SHOWN

REV. 0

PROJECT ENVIRONMENTAL ASSESSMENT OF THE CAPITAL REGION
RESOURCE RECOVERY CENTRE

MAP 1

Path: N:\Active\Spatial_IMM\Miller_Paving_Ltd\CRRRC\GIS\MXDs\12-1125-0045\Working\Phase0500\Task0160_CultureAndHeritage\1211250045-0500-0160-NRusellRd-02.mxd



LEGEND

PHOTO LOCATION AND DIRECTION

POPULATED PLACENAME

ROAD

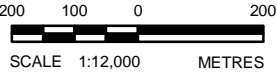
CONTOUR LINE, (5m)

UTILITY LINE

SURFACE WATER FEATURE

APPROXIMATE EXTENT OF EXISTING QUARRY EXCAVATION

PROPERTY BOUNDARY



NOTE

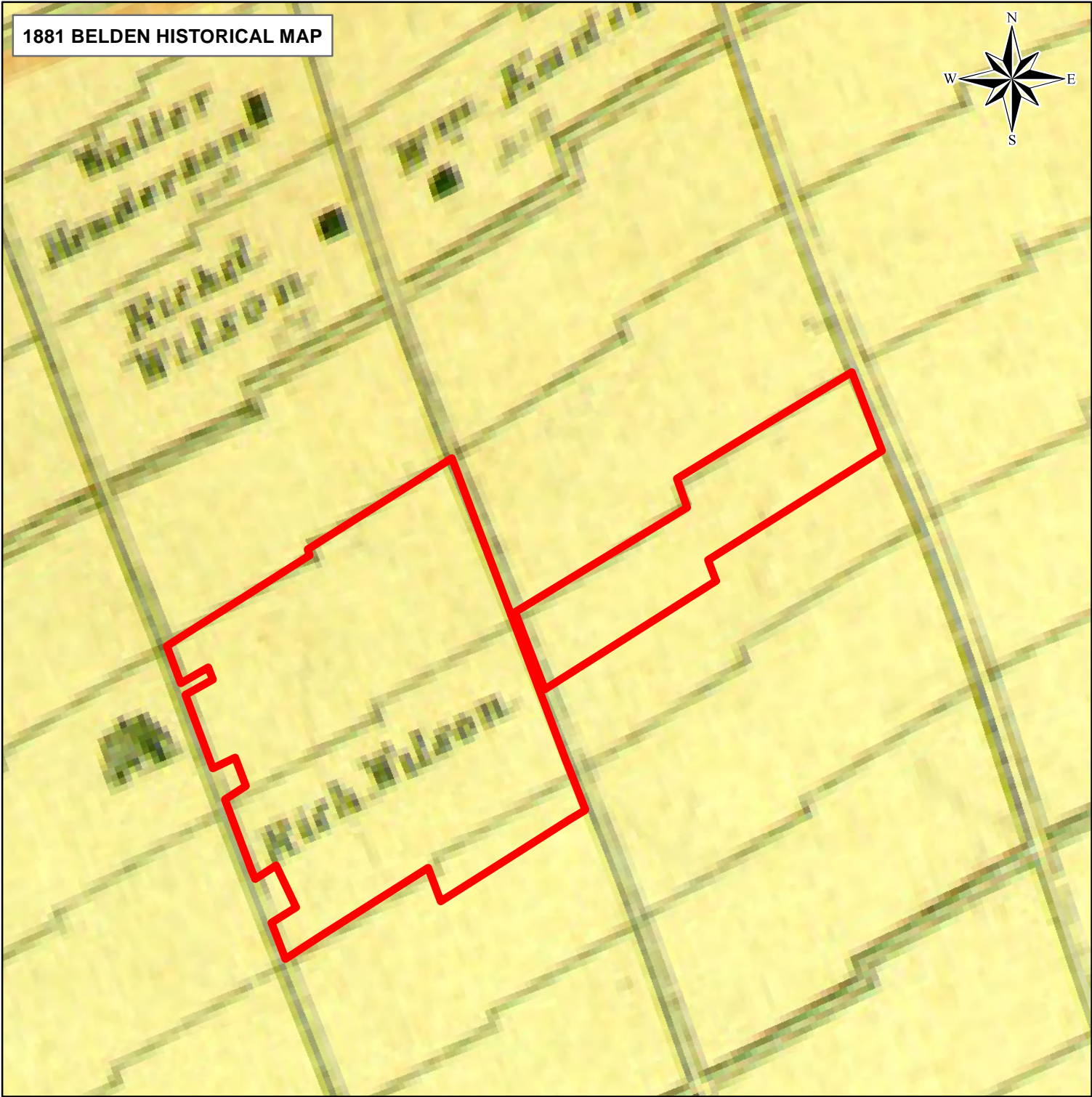
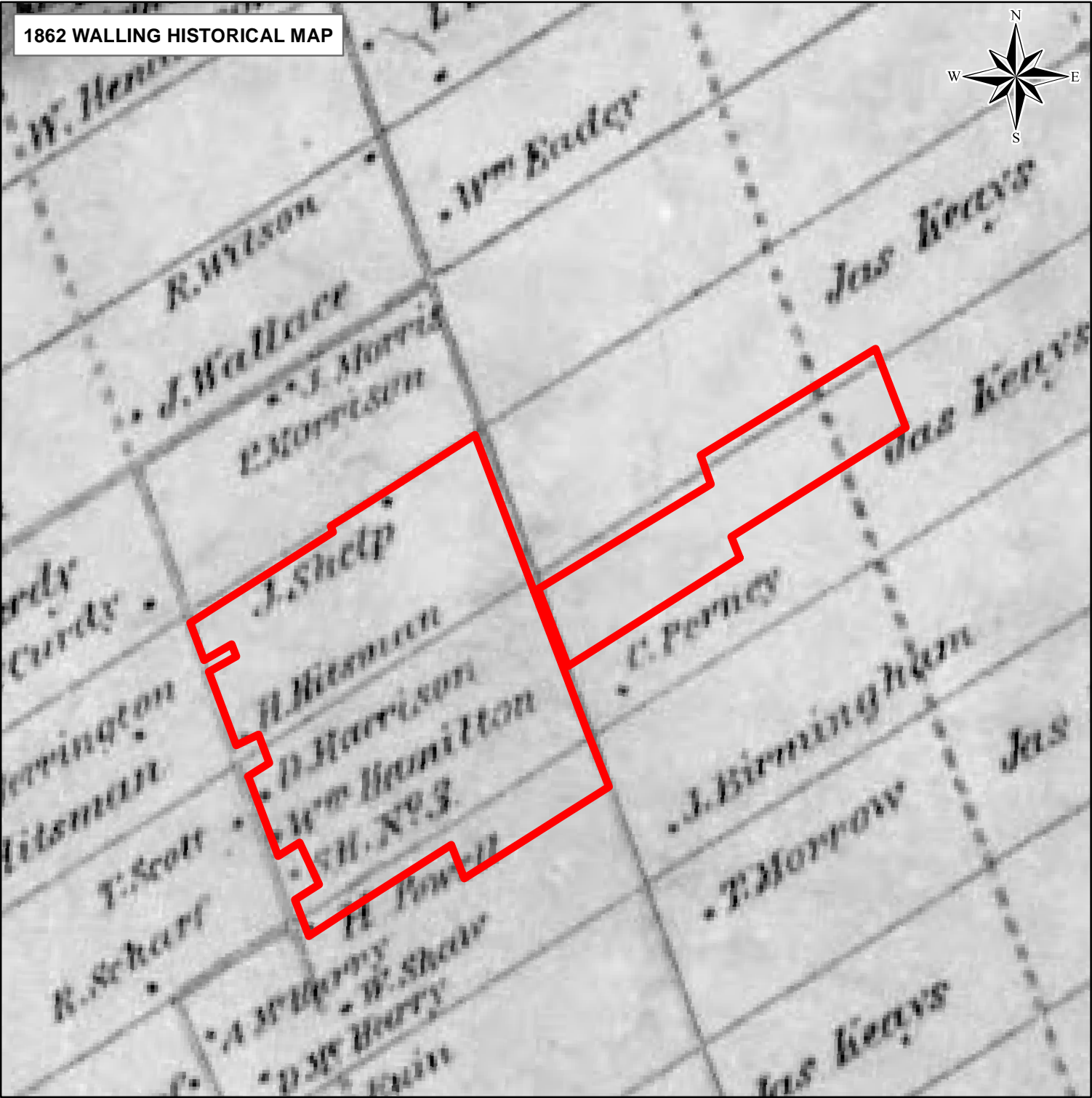
THIS FIGURE IS TO BE READ IN CONJUNCTION WITH THE ACCOMPANYING GOLDER ASSOCIATES LTD. REPORT

REFERENCE

BING MAPS AERIAL, SEPT. 2010, PROVIDED BY ARCGIS ONLINE, ESRI, 2012.
SOURCE: (C) 2010 MICROSOFT CORPORATION AND ITS DATA SUPPLIERS.
LAND INFORMATION ONTARIO (LIO) DATA PRODUCED BY GOLDER ASSOCIATES LTD. UNDER LICENCE FROM ONTARIO MINISTRY OF NATURAL RESOURCES, © QUEENS PRINTER 2012.
PROJECTION: TRANSVERSE MERCATOR DATUM: NAD 83 COORDINATE SYSTEM: UTM ZONE 18

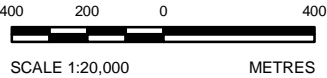
PROJECT		ENVIRONMENTAL ASSESSMENT OF THE CAPITAL REGION RESOURCE RECOVERY CENTRE			
TITLE		SITE PLAN			
	PROJECT No. 12-1125-0045		SCALE AS SHOWN	REV. 0	
	DESIGN	TR	JAN. 2013	MAP 2	
	GIS	BR	AUG. 2014		
	CHECK	EW	AUG. 2014		
	REVIEW	HUD	AUG. 2014		

N:\Active\Spatial_1\Miller_Paving_Ltd\CRRC\GIS\GISMXDs\12-1125-0045\Working\Phase0500\Task0160_CultureAndHeritage\1211250045-0500-0160-NRusse\IRD-03.mxd



LEGEND

 PROPERTY BOUNDARY




NOTE

THIS FIGURE IS TO BE READ IN CONJUNCTION WITH THE ACCOMPANYING GOLDER ASSOCIATES LTD. REPORT

REFERENCE

1862 WALLING HISTORICAL MAP - RUSSELL COUNTY.
1881 BELDEN HISTORICAL MAP - EAST GLOUCESTER.
PROJECTION: TRANSVERSE MERCATOR DATUM: NAD 83 COORDINATE SYSTEM: UTM ZONE 18

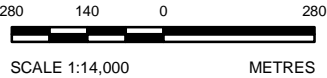
PROJECT		ENVIRONMENTAL ASSESSMENT OF THE CAPITAL REGION RESOURCE RECOVERY CENTRE			
TITLE		HISTORIC MAPS			
 Golder Associates Ottawa, Ontario	PROJECT No. 12-1125-0045			SCALE AS SHOWN	REV. 0.0
	DESIGN	TR	JAN. 2013	MAP 3	
	GIS	BR	AUG. 2014		
	CHECK	EW	AUG. 2014		
	REVIEW	HJD	AUG. 2014		

N:\Active\Spatial_1\Miller_Paving_Ltd\CRRRC\GIS\MXDs\12-1125-0045\Working\Phase0500\Task0160_CultureAndHeritage\1211250045-0500-0160-NRusellRD-04.mxd




LEGEND

PROPERTY BOUNDARY

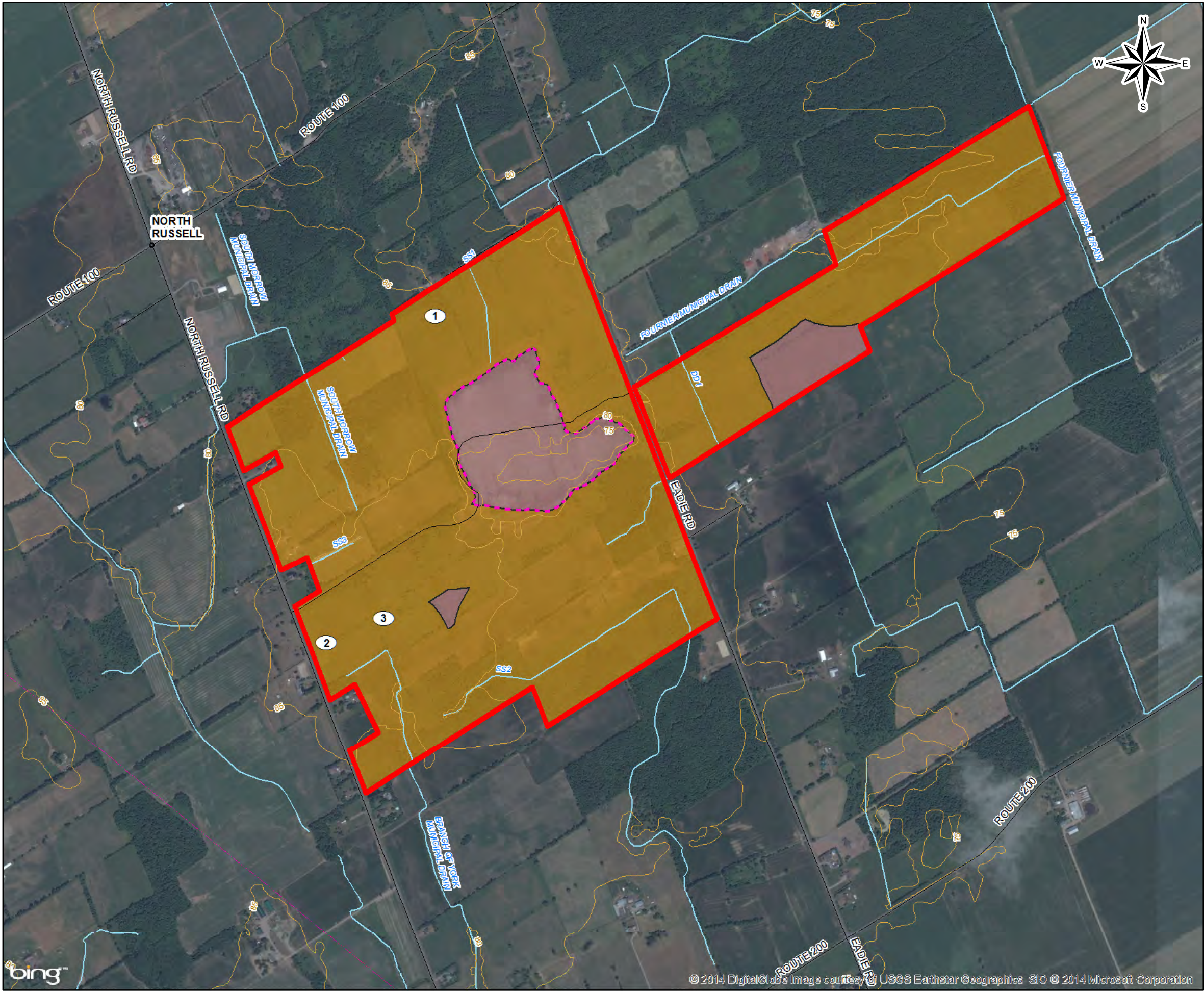


NOTE
THIS FIGURE IS TO BE READ IN CONJUNCTION WITH THE ACCOMPANYING GOLDER ASSOCIATES LTD. REPORT

REFERENCE
1945 AIR PHOTOS - A9557-128 AND A9557-130, NAPL.
1985 AIR PHOTO - A31402-05, NAPL.
PROJECTION: TRANSVERSE MERCATOR DATUM: NAD 83 COORDINATE SYSTEM: UTM ZONE 18

PROJECT		ENVIRONMENTAL ASSESSMENT OF THE CAPITAL REGION RESOURCE RECOVERY CENTRE			
TITLE		AIR PHOTOS			
 Golder Associates Ottawa, Ontario	PROJECT No. 12-1125-0045			SCALE AS SHOWN	REV. 0.0
	DESIGN	TR	JAN. 2013	MAP 4	
	GIS	BR	AUG. 2014		
	CHECK	EW	AUG. 2014		
	REVIEW	HJD	AUG. 2014		

Path: N:\Active\Spatial_IM\Miller_Paving_Ltd\CRRRC\GIS\MXDs\12-1125-0045\Working\Phase0500\Task0160_CultureAndHeritage\1211250045-0500-0160-NRusellRd-05.mxd



LEGEND

POPULATED PLACENAME

ROAD

CONTOUR LINE, (5m)

UTILITY LINE

SURFACE WATER FEATURE

APPROXIMATE EXTENT OF EXISTING QUARRY EXCAVATION

ARCHAEOLOGICAL POTENTIAL

LOW/NO ARCHAEOLOGICAL POTENTIAL

PROPERTY BOUNDARY

1

PROBABLE 19th CENTURY FARMSTED LOCATION

2

PROBABLE 19th CENTURY FARMSTED LOCATION

3


PROBABLE 20th CENTURY FARMSTED LOCATION

NOTE

THIS FIGURE IS TO BE READ IN CONJUNCTION WITH THE ACCOMPANYING GOLDER ASSOCIATES LTD. REPORT

REFERENCE

BING MAPS AERIAL, SEPT. 2010, PROVIDED BY ARCGIS ONLINE, ESRI, 2012.
SOURCE: (C) 2010 MICROSOFT CORPORATION AND ITS DATA SUPPLIERS.
LAND INFORMATION ONTARIO (LIO) DATA PRODUCED BY GOLDER ASSOCIATES LTD. UNDER LICENCE FROM ONTARIO MINISTRY OF NATURAL RESOURCES, © QUEENS PRINTER 2012.
PROJECTION: TRANSVERSE MERCATOR DATUM: NAD 83 COORDINATE SYSTEM: UTM ZONE 18

PROJECT		ENVIRONMENTAL ASSESSMENT OF THE CAPITAL REGION RESOURCE RECOVERY CENTRE			
TITLE		AREAS OF ARCHAEOLOGICAL POTENTIAL			
 Golder Associates Ottawa, Ontario	PROJECT No. 12-1125-0045		SCALE AS SHOWN	REV. 0	
	DESIGN	TR	JAN. 2013	MAP 5	
	GIS	BR	AUG. 2014		
	CHECK	EW	AUG. 2014		
	REVIEW	HUD	AUG. 2014		



Report Signature Page

GOLDER ASSOCIATES LTD.

Tim Rangescroft M.Sc.
Archaeologist

Hugh Daechsel M.A.
Senior Archaeologist/Principal

TR/PAS/HJD/clb/sg

n:\active\2012\1125 - environmental and civil engineering\12-1125-0045 crrc ea eastern on\phase 4500_final_eas\tsd 1 comparative evaluation\task 0160 culture & heritage\attachment f-1 arch nrr\1211250045-4500-0160_1_nrr_feb2013_rev. 22oct14.docx

Golder, Golder Associates and the GA globe design are trademarks of Golder Associates Corporation.