

TOPOGRAPHICAL PLAN OF SURVEY

PART 1 Plan of PART OF LOTS 1,2,3 AND 4 REGISTERED PLAN 17 CITY OF OTTAWA

Surveyed by Annis, O'Sullivan, Vollebakk Ltd.

Scale 1 : 250



Metric

DISTANCES SHOWN ON THIS PLAN ARE IN METRES AND CAN BE CONVERTED TO FEET BY DIVIDING BY 0.3048

Surveyor's Certificate

I CERTIFY THAT:

- 1. This survey and plan are correct and in accordance with the Surveys Act, the Surveyors Act and the Land Titles Act and the regulations made under them.
2. The survey was completed on the 6th day of April, 2017.

April 19/17 Date

Signature of V. Andrew Shep, Ontario Land Surveyor

Notes & Legend

- Legend symbols and their meanings: Survey Monument Planted, Survey Monument Found, Standard Iron Bar, Short Standard Iron Bar, Iron Bar, Witness, Measured, Annis, O'Sullivan, Vollebakk Ltd., Plan 50R-4499, Registered Plan 17, Plan 50R-1888, (AOV) Plan, September 5, 2006, Overhead Wires, Light Standard, Utility Pole, Maintenance Hole (Sanitary), Maintenance Hole (Traffic), Fire Hydrant, Catch Basin, Sign, Anchor, Location of Elevations, Top of Curb Elevations, Top of Lid/Grate.

ASSOCIATION OF ONTARIO LAND SURVEYORS PLAN SUBMISSION FORM 2009854. Includes a logo and a disclaimer: THIS PLAN IS NOT VALID UNLESS IT IS AN EMBOSSED ORIGINAL COPY ISSUED BY THE SURVEYOR in accordance with Regulation 1026, Section 29 (3).

ELEVATION NOTES

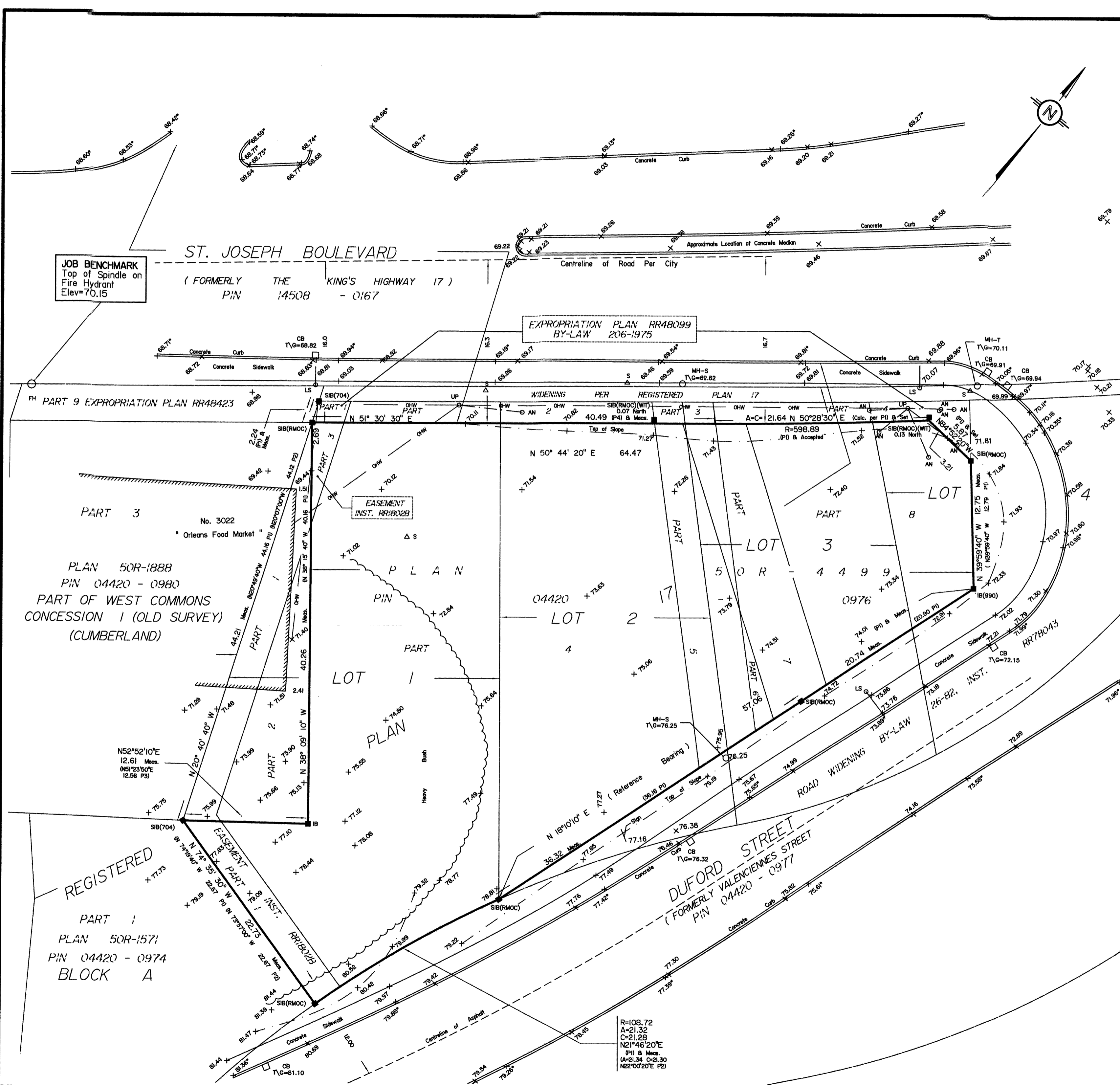
- 1. Elevations shown are referred to geodetic datum.
2. It is the responsibility of the user of this information to verify that the job benchmark has not been altered or disturbed and that its relative elevation and description agrees with the information shown on this drawing.

UTILITY NOTES

- 1. This drawing cannot be accepted as acknowledging all of the utilities and it will be the responsibility of the user to contact the respective utility authorities for confirmation.
2. Only visible surface utilities were located.
3. A field location of underground plant by the pertinent utility authority is mandatory before any work involving breaking ground, probing, excavating etc.

Bearings are astronomic, derived from part of the easterly limit of Plan 50R-4499, shown to be N 18°10'10" E thereon.

ANNIS, O'SULLIVAN, VOLLEBEKK LTD. 14 Concourse Gate, Suite 500 Nepean, Ont. K2E 7S6. Phone: (613) 727-0850 / Fax: (613) 727-1079. Email: Napean@aovltd.com. Job No. 19317-17 Tergen Pl.Lts.1-4 RPI7 SRPR DI KS



JOB BENCHMARK Top of Spindle on Fire Hydrant Elev=70.15

ST. JOSEPH BOULEVARD (FORMERLY THE KING'S HIGHWAY 17) PIN 14508 - 0167

EXPROPRIATION PLAN RR48099 BY-LAW 206-1975

EASEMENT INST. RR1802B

PLAN 50R-1888 PIN 04420 - 0980 PART OF WEST COMMONS CONCESSION 1 (OLD SURVEY) (CUMBERLAND)

REGISTERED PART 1 PLAN 50R-1571 PIN 04420 - 0974 BLOCK A

R=108.72 A=21.32 C=21.28 N21°46'20"E (P1) & Meas. (A=21.34 C=21.30 N22°00'20"E P2)