

**LEGEND**

	PROPERTY LINE		PROPOSED STORM MANHOLE
	PROPOSED STORM SEWER		PROPOSED CATCH BASIN
	DRAINAGE DIVIDE		PROPOSED CB 'T'
	PROPOSED SWALE		
	PROPOSED PERFORATED SUBDRAIN		
	MAJOR SYSTEM FLOW ROUTE		
	DRAINAGE AREA ID		
	AREA IN Ho		
	RATIONAL METHOD RUNOFF COEFFICIENT		
	SURFACE PONDING AREA		
	MAX PONDING		

**NOT FOR CONSTRUCTION**

**TOPOGRAPHIC INFORMATION**  
 TOPOGRAPHIC INFORMATION PROVIDED BY ANNIS, O'SULLIVAN, VOLLEBECK LTD.  
 PROJ. NO. 19241-16  
 RECEIVED FEBRUARY 9, 2017

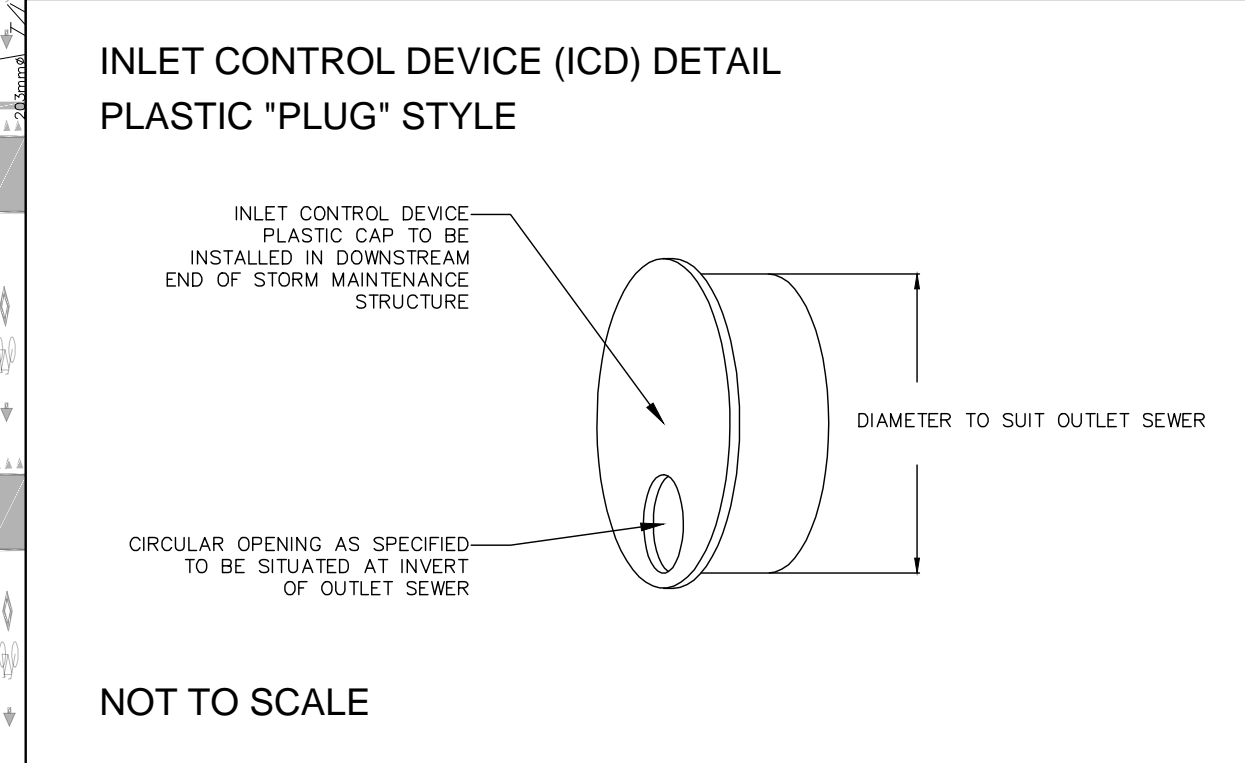
**SITE PLAN INFORMATION**  
 SITE PLAN PROVIDED BY BARRY HOBIN & ASSOCIATES  
 PROJ. 333 MONTREAL ROAD  
 RECEIVED SEPTEMBER 21, 2017

**GEOTECHNICAL STUDY**  
 GEOTECHNICAL RECOMMENDATIONS PROVIDED BY PATERSON GROUP  
 PROJ. NO. PG3970-2  
 DATED MARCH 6, 2017

**SITE SERVICING AND STORMWATER MANAGEMENT STUDY**  
 SERVICING AND STORMWATER MANAGEMENT RECOMMENDATIONS PROVIDED BY DSEL  
 PROJ. NO. 16-893  
 DATED SEPTEMBER 2017

**BENCH MARK**  
 TOP OF SPINDLE OF FIRE HYDRANT LOCATED NORTH EAST OF MONTREAL ROAD AND STE ANNE AVENUE  
 INTERSECTION  
 ELEV=60.42m

No.	BY	YY.MM.DD	DESCRIPTION
2	A.J.G.	17.09.26	ISSUED FOR MUNICIPAL REVIEW
1	A.J.G.	17.05.11	ISSUED FOR COORDINATION



PROJECT No. 16-893

**STORMWATER MANAGEMENT PLAN - SUBCATCHMENTS  
 333 MONTREAL ROAD** © DSEL

THE SALVATION ARMY  
 2 Overlea Boulevard  
 Toronto, Ontario, M4H 1P4

**DSEL**  
 david schaeffer engineering ltd  
 SMART SUBDIVISIONS™

120 Iber Road Unit 103  
 Stittsville, Ontario, K2S 1E9  
 Tel. (613) 836-0856  
 Fax. (613) 836-7183  
 www.DSEL.ca

DRAWN BY: A.J.G.	CHECKED BY: R.D.F.	DRAWING NO. SWM-2	SHEET NO. 2 of 2
DESIGNED BY: A.J.G.	CHECKED BY: R.D.F.		
SCALE: 1:300	DATE: JUNE 2017		