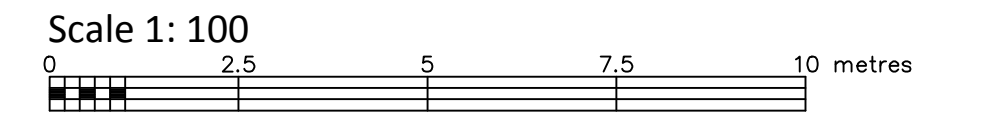


PART OF LOTS 51 AND 52 REGISTERED PLAN 369 CITY OF OTTAWA

FARLEY, SMITH & DENIS SURVEYING LTD. 2017



Metric Note: Distances and coordinates on this plan are in metres and can be converted to feet by dividing by 0.3048.

Bearing Note: Bearings are grid and are referred to the southerly limit of Scott Street having a bearing of N 59° 29' 40" E as shown on Plan 4R-12827.

Elevation Notes: 1. Elevations shown are geodetic and are referred to Geodetic Datum CGVD-1928:1978. 2. Elevations derived from Vertical Benchmark 0011956U110 having a published elevation of 63.375m. 3. It is the responsibility of the user of this information to verify that the job benchmark has not been altered or disturbed and that its relative elevation and description agrees with the information shown on this drawing.

Utility Notes: 1. This drawing cannot be accepted as acknowledging all of the utilities and it will be the responsibility of the user to contact the respective utility authorities for confirmation. 2. Only visible surface utilities were located. 3. Underground utility data derived from City of Ottawa utility sheet reference: E-05-02, DWG.11906 & 1246. 4. Sanitary and storm sewer grades and inverts were derived from: Field measurement. 5. A field location of underground plant by the pertinent utility authority is mandatory before any work involving breaking ground, probing, excavating etc.

Notes & Legend

Table with 2 columns: Denotes (symbols) and Survey Monument Planted / Found (descriptions). Includes symbols for survey monuments, concrete monuments, witness, measured points, registered plans, bearings, fences, maintenance holes, valves, water valves, inverts, traffic signal posts, elevations, and deciduous trees.

WARNING: NO PERSON MAY COPY, REPRODUCE, DISTRIBUTE OR ALTER THIS PLAN IN WHOLE OR IN PART WITHOUT THE WRITTEN PERMISSION OF FARLEY, SMITH & DENIS SURVEYING LTD. © FARLEY, SMITH & DENIS SURVEYING LTD., 2017.

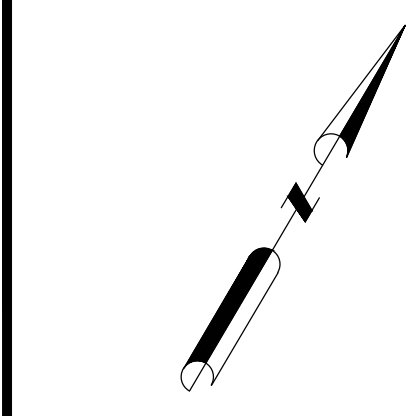
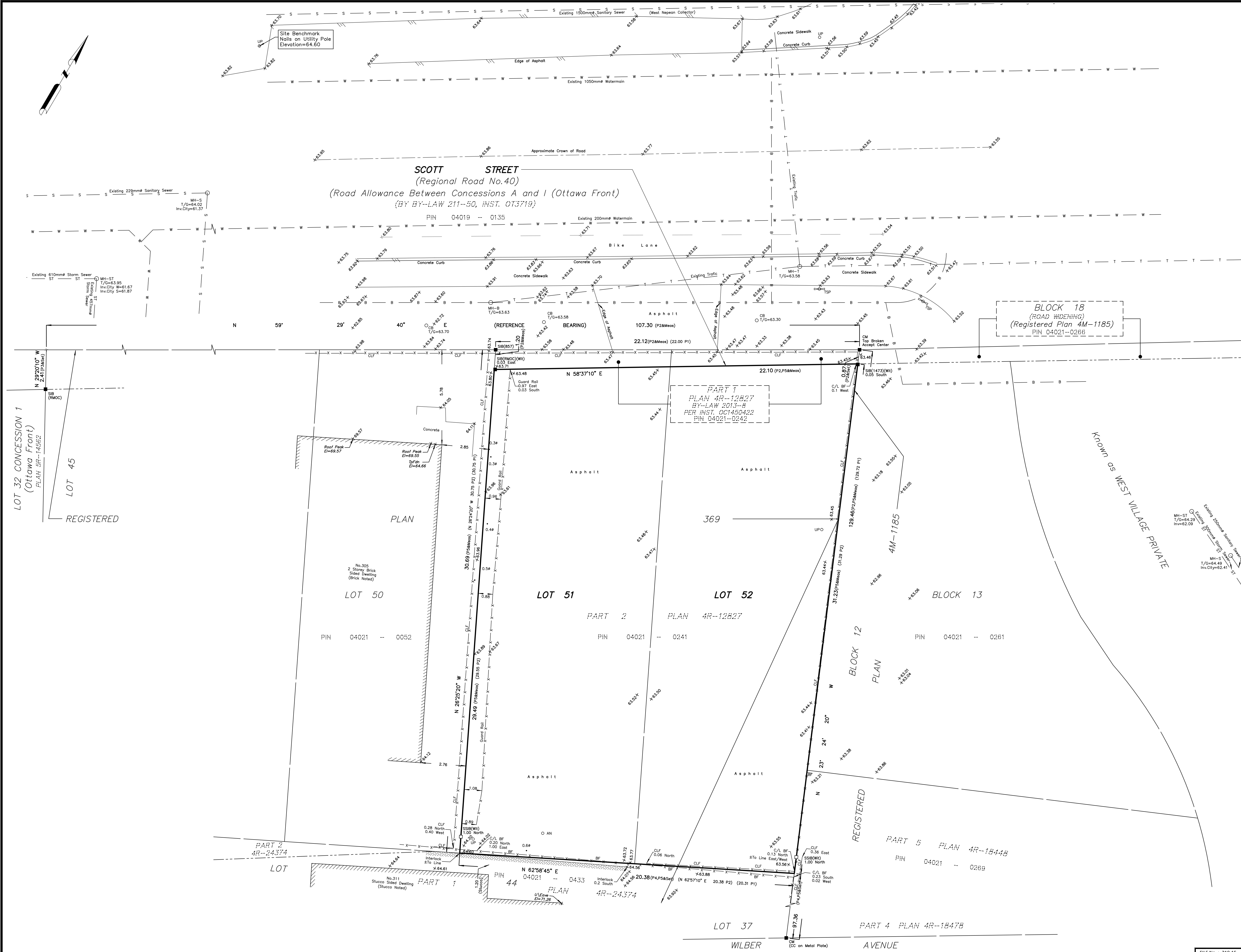
Surveyor's Certificate

- I certify that: 1. This survey and plan are correct and in accordance with the Surveys Act, the Surveyors Act and the Regulations made under them. 2. The survey was completed on the 28th day of May, 2015.

Date: Daniel Robinson, Ontario Land Surveyor

FARLEY, SMITH & DENIS SURVEYING LTD.

ONTARIO LAND SURVEYORS CANADA LAND SURVEYORS 190 COLONNADE ROAD, OTTAWA, ONTARIO K2E 7J5 TEL. (613) 727-8226 FAX. (613) 727-1826



LOT 32 CONCESSION 1 (Ottawa Front) PLAN 5F-14562 REGISTERED LOT 45

LOT 50 No. 305 2 Storey Brick Sided Dwelling (Brick Notes) PIN 04021 -- 0052

PART 2 PLAN 4R-24374 LOT 44 No. 311 Stucco Sided Dwelling (Stucco Notes) PIN 04021 -- 0433

LOT 37 WILBER AVENUE PART 4 PLAN 4R-18478 PIN 04021 -- 0269

LOT 51 PART 1 PLAN 4R-12827 BY-LAW 2013-5 PER INST. OC1450422 PIN 04021--0242

LOT 52 PART 2 PLAN 4R-12827 BY-LAW 2013-5 PER INST. OC1450422 PIN 04021--0242

LOT 53 BLOCK 12 PLAN 4M-1185 PIN 04021 -- 0261

LOT 54 BLOCK 13 PIN 04021 -- 0261

LOT 55 BLOCK 14 PIN 04021 -- 0261

LOT 56 BLOCK 15 PIN 04021 -- 0261

LOT 57 BLOCK 16 PIN 04021 -- 0261

LOT 58 BLOCK 17 PIN 04021 -- 0261

LOT 59 BLOCK 18 (ROAD WIDENING) (Registered Plan 4M-1185) PIN 04021--0266

LOT 60 BLOCK 19 PIN 04021 -- 0261

LOT 61 BLOCK 20 PIN 04021 -- 0261

LOT 62 BLOCK 21 PIN 04021 -- 0261

LOT 63 BLOCK 22 PIN 04021 -- 0261

LOT 64 BLOCK 23 PIN 04021 -- 0261

LOT 65 BLOCK 24 PIN 04021 -- 0261

LOT 66 BLOCK 25 PIN 04021 -- 0261

LOT 67 BLOCK 26 PIN 04021 -- 0261

LOT 68 BLOCK 27 PIN 04021 -- 0261

LOT 69 BLOCK 28 PIN 04021 -- 0261

LOT 70 BLOCK 29 PIN 04021 -- 0261

LOT 71 BLOCK 30 PIN 04021 -- 0261

LOT 72 BLOCK 31 PIN 04021 -- 0261

LOT 73 BLOCK 32 PIN 04021 -- 0261

LOT 74 BLOCK 33 PIN 04021 -- 0261

LOT 75 BLOCK 34 PIN 04021 -- 0261

LOT 76 BLOCK 35 PIN 04021 -- 0261

LOT 77 BLOCK 36 PIN 04021 -- 0261

LOT 78 BLOCK 37 PIN 04021 -- 0261

LOT 79 BLOCK 38 PIN 04021 -- 0261

LOT 80 BLOCK 39 PIN 04021 -- 0261

LOT 81 BLOCK 40 PIN 04021 -- 0261

LOT 82 BLOCK 41 PIN 04021 -- 0261

LOT 83 BLOCK 42 PIN 04021 -- 0261

LOT 84 BLOCK 43 PIN 04021 -- 0261

LOT 85 BLOCK 44 PIN 04021 -- 0261

LOT 86 BLOCK 45 PIN 04021 -- 0261

LOT 87 BLOCK 46 PIN 04021 -- 0261

LOT 88 BLOCK 47 PIN 04021 -- 0261

LOT 89 BLOCK 48 PIN 04021 -- 0261

LOT 90 BLOCK 49 PIN 04021 -- 0261

LOT 91 BLOCK 50 PIN 04021 -- 0261

LOT 92 BLOCK 51 PIN 04021 -- 0261

LOT 93 BLOCK 52 PIN 04021 -- 0261

LOT 94 BLOCK 53 PIN 04021 -- 0261

LOT 95 BLOCK 54 PIN 04021 -- 0261

LOT 96 BLOCK 55 PIN 04021 -- 0261

LOT 97 BLOCK 56 PIN 04021 -- 0261

LOT 98 BLOCK 57 PIN 04021 -- 0261

LOT 99 BLOCK 58 PIN 04021 -- 0261

LOT 100 BLOCK 59 PIN 04021 -- 0261