

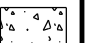

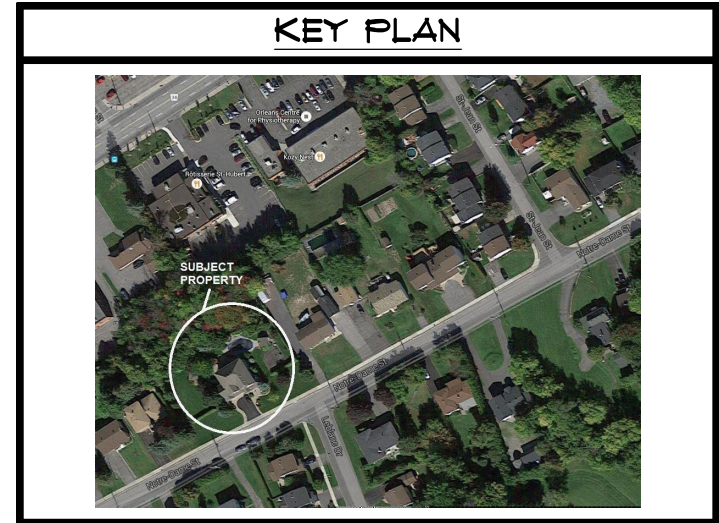


LEGEND :

- PROPOSED ADDITION 
- GREEN (SOD & SEED) 
- SIDEWALK CONCRETE OR INTERLOCK 
- ASPHALT PAVEMENT 

DATA		
PROJECT : PROPOSED SEMI-DETACHED DWELLING		
ZONING - R2N (zoning amendment required)		
	BLOCK A / PART 1	BLOCK B / PART 2
BUILDING SIZE	19.710 m x 17.983 m	+/- 15.418 m x 13.099 m
BUILDING AREA	3272 sq/ft (303.98 m <sup>2</sup> )	930 sq/ft (86.40 m <sup>2</sup> )
LOT AREA -	1274.67 sq.m	2282.58 sq.m
MIN. LOT AREA REQ'D -	270 sq.m	270 sq.m
LOT WIDTH -	22.32 m	32.24 m
MIN. LOT WIDTH REQ'D -	9.0 m	9.0 m
FRONT YARD -	+/- 5.125 m	+/- 6.070 m
MIN. FRONT YARD REQ'D -	5.0 m	5.0 m
SIDE YARD -	+/- 1.271 m	+/- 3.0 m
MIN. SIDE YARD REQ'D -	1.0 m	1.0 m
REAR YARD -	+/- 33.697 m	+/- 39.162 m
MIN. REAR YARD REQ'D -	7.0 m	7.0 m
BUILDING HEIGHT -	+/- 5.461 m	+/- 8.0 m
MAX. BUILDING HEIGHT -	11.0 m	11.0 m
NUMBER OF PARKING	2 Parkings	1 Parkings
NUMBER OF PARKING REQ'D-	1 Parking x 2 = 2 Parkings	1 Parking x 1 = 1 Parkings

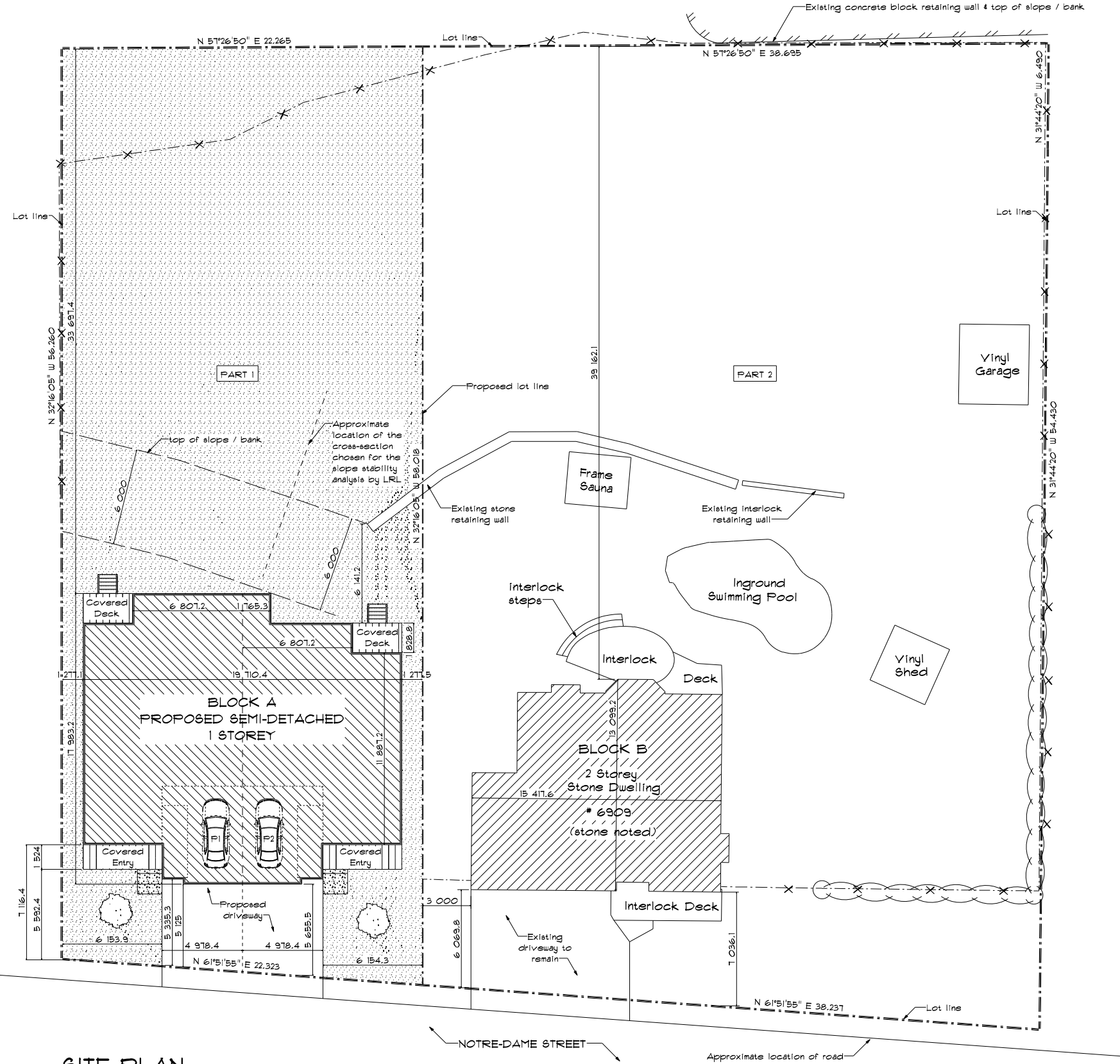


NO.	REVISIONS	DATE
1	ISSUED FOR REVISIONS	13/07/2017
6	ISSUED FOR REVISIONS	07/07/2017
5	ISSUED FOR ZONING CHANGE	25/04/2017
4	ISSUED FOR DISCUSSION	21/06/2016
3	ISSUED FOR CHANGES	15/06/2016
2	ISSUED FOR CHANGES	18/03/2016
1	ISSUED FOR PRELIMINARY	29/02/2016

**LUC LAVOIE**  
DESIGN & DRAFTING

1047 Notre Dame St, P.O. Box 928, Embrun, On, K0A 1W0  
2285 St-Laurent Blvd, Unit D18, Ottawa, On, K1G 4Z1  
Website: www.lucilavoiedesign.ca  
Email: info@lucilavoiedesign.ca  
613-443-3461

PROJECT NAME		
<b>PROPOSED SEMI-DETACHED FOR DENIS LACROIX</b>		
6309 NOTRE-DAME STREET, OTTAWA		
PROJECT NO.	2015-0190	DRAWINGS NO.
DRAWN BY	M.SAVAGE	<b>SP1</b>
VERIFIED BY	L.LAVOIE	<b>SP1</b>



**SITE PLAN**  
Scale: 1:300

PART 1 OF LOT 21  
REGISTERED PLAN 906  
CITY OF OTTAWA