

Revision			
No	Description	Appr.	Date
1	SITE PLAN CONTROL	E.P.	6/06/2017

- Note :**
1. It is the responsibility of the appropriate contractor or official to report any errors, omissions or discrepancies on this plan with actual site conditions to the Landscape Architect before proceeding with construction.
  2. The Contractor must not cut down any existing vegetation without the approval of the Project Director.
  3. Implantation of the works on site must be approved by the Project Director.
  4. The Contractor must use the Cad file for implantation of all work. The contractor must verify the amounts specified in the schedule and notify the landscape architect of any errors, omissions or contradictions before the close of the bid.
  5. Existing grades indicated on the plan come from the survey provided by the owner.
  6. The contractor is to notify all utility companies and authorities prior to any excavation and ascertain locations of underground services.
  7. The contractor is to reinstate all areas and items damaged as a result of construction activity.
  8. The contractor is to comply with all pertinent codes and by-laws.
  9. The contractor is to maintain a positive surface run-off throughout the entire construction period.
  10. The Landscape Architect is not responsible for subsurface conditions.
  11. The contractor is to stake the proposed location of all plant material in conjunction with the Landscape Architect prior to excavation.
  9. All trees within 1m of underground utility trenches are to be excavated by hand.
  10. Remove all protective wrapping from tree trunks after installation.
  11. Staking of trees shall only be performed if necessary.
  12. Ensure that mulch is pulled back a min. distance of 75mm from base of tree trunk.

## PROJET | PAYSAGE

24 Mont-Royal Ouest, Suite 801  
Montréal, QC, H2T 2S2  
514 949 7700

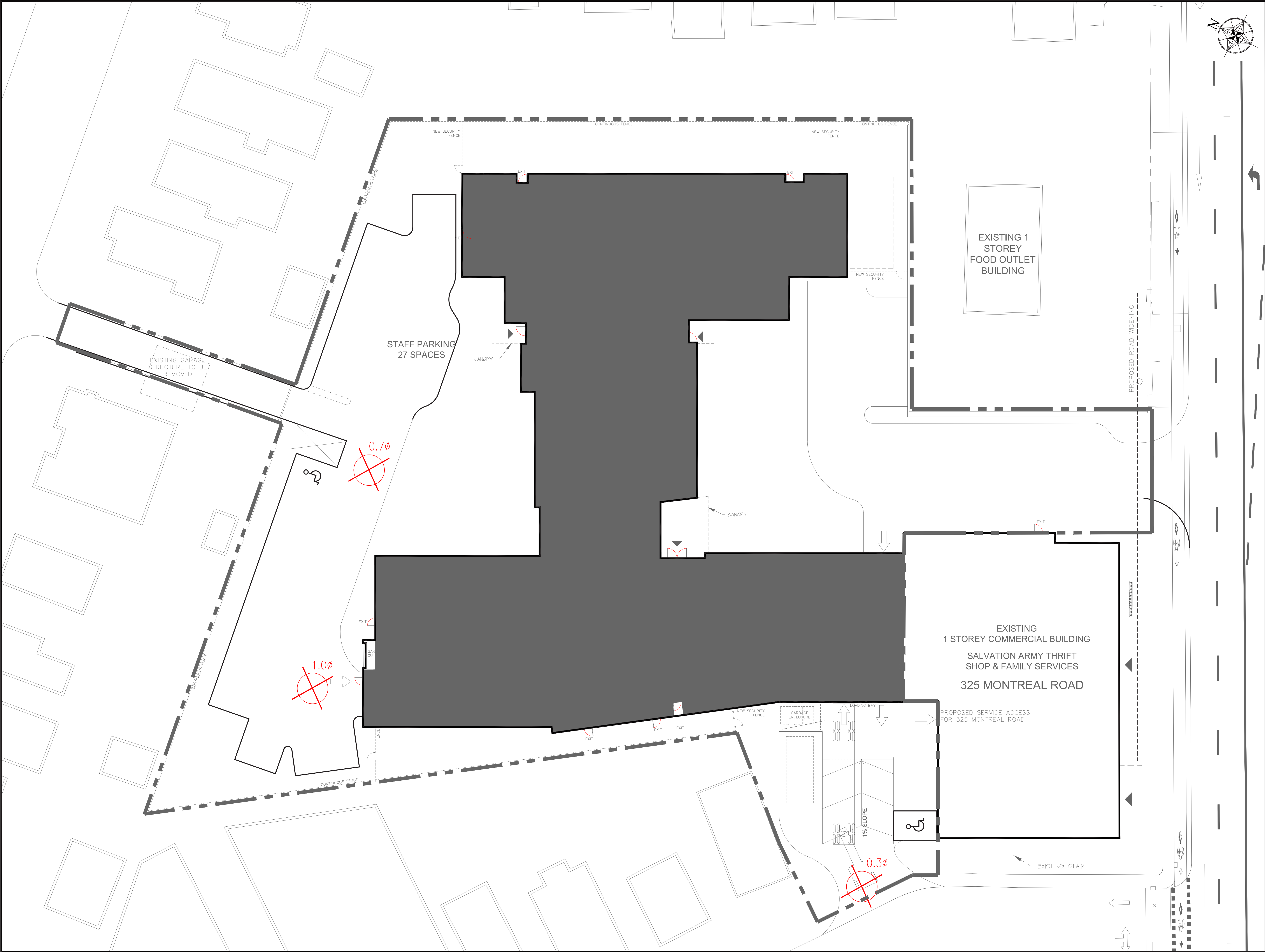


Project name  
**SALVATION ARMY  
333 MONTREAL ROAD  
Ottawa, Ontario**

Drawing title  
**SITE PLAN**

Drawn by:  
**B.DALLAS**  
Designed by :  
**B.DALLAS / S.GALLANT**  
Date :  
**MAY 2017**  
Sheet No.  
**LA-10**  
**16-427**





Revision			
No	Description	Appr.	Date
1	SITE PLAN CONTROL	E.P.	6/06/2017

LEGEND



TREE TO BE REMOVED

Note :

1. It is the responsibility of the appropriate contractor or official to report any errors, omissions or discrepancies on this plan with actual site conditions to the Landscape Architect before proceeding with construction.
2. The Contractor must not cut down any existing vegetation without the approval of the Project Director.
3. Implantation of the works on site must be approved by the Project Director.
4. The Contractor must use the Cad file for implantation of all work.The contractor must verify the amounts specified in the schedule and notify the landscape architect of any errors, omissions or contradictions before the close of the bid.
5. Existing grades indicated on the plan come from the survey provided by the owner.
6. The contractor is to notify all utility companies and authorities prior to any excavation and ascertain locations of underground services.
7. The contractor is to reinstate all areas and items damaged as a result of construction activity.
8. The contractor is to comply with all pertinent codes and by-laws.
9. The contractor is to maintain a positive surface run-off throughout the entire construction period.
- 10.The Landscape Architect is not responsible for subsurface conditions.
- 11.The contractor is to stake the proposed location of all plant material in conjunction with the Landscape Architect prior to excavation.
9. All trees within 1m of underground utility trenches are to be excavated by hand.
- 10.Remove all protective wrapping from tree trunks after installation.
- 11.Staking of trees shall only be performed if necessary.
- 12.Ensure that mulch is pulled back a min. distance of 75mm from base of tree trunk.

PROJET | PAYSAGE

24 Mont-Royal Ouest, Suite 801  
Montréal, QC, H2T 2S2  
514 949 7700

Professional seal



Project name

SALVATION ARMY  
333 MONTREAL ROAD  
Ottawa, Ontario

Drawing title

TREE REMOVAL PLAN

SCALE 1:200

Drawn by:

B.DALLAS

Designed by :

B.DALLAS / S.GALLANT

Date :

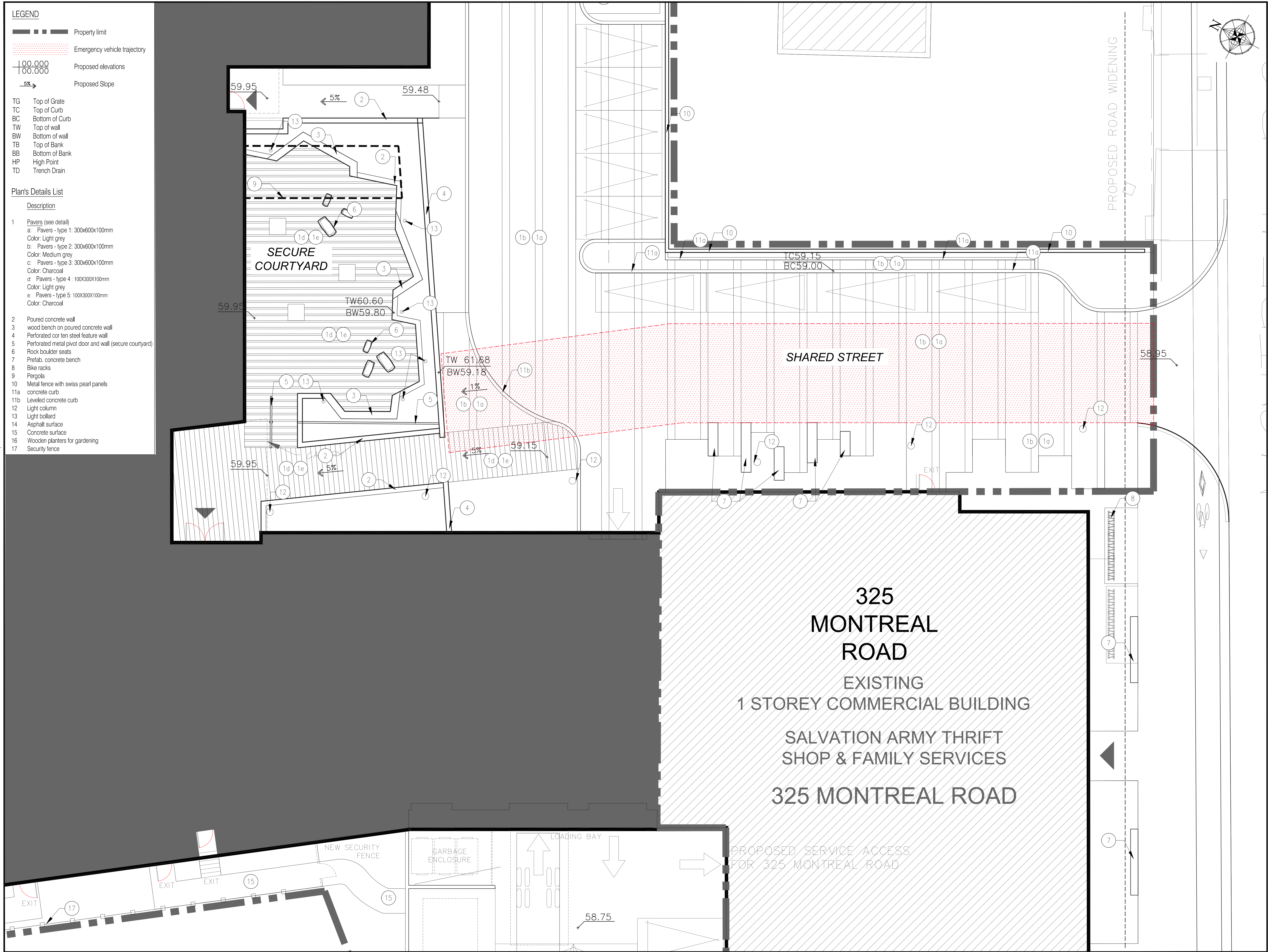
MAY 2017

Sheet No.

LA-20

16-427



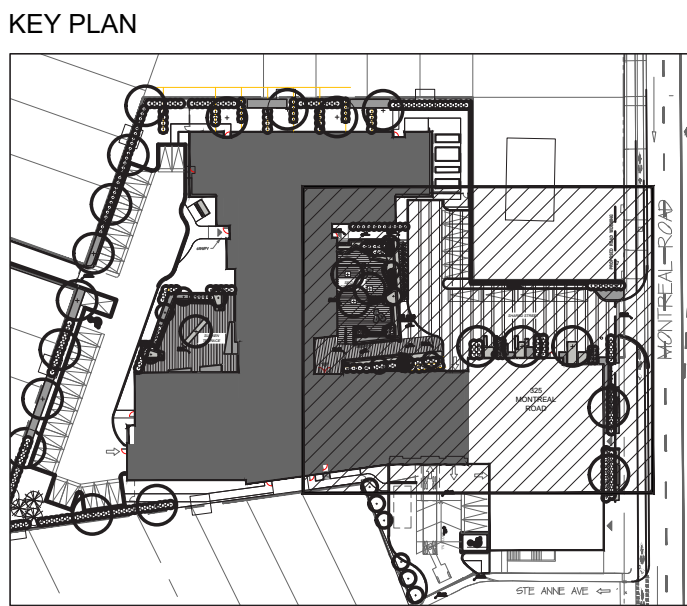


- LEGEND**
- Property limit
  - Emergency vehicle trajectory
  - Proposed elevations
  - Proposed Slope
- TG Top of Grate  
TC Top of Curb  
BC Bottom of Curb  
TW Top of wall  
BW Bottom of wall  
TB Top of Bank  
BB Bottom of Bank  
HP High Point  
TD Trench Drain

- Plan's Details List**
- Description
- 1 Pavers (see detail)  
a: Pavers - type 1: 300x600x100mm  
Color: Light grey  
b: Pavers - type 2: 300x600x100mm  
Color: Medium grey  
c: Pavers - type 3: 300x600x100mm  
Color: Charcoal  
d: Pavers - type 4: 100x300x100mm  
Color: Light grey  
e: Pavers - type 5: 100x300x100mm  
Color: Charcoal
- 2 Poured concrete wall  
3 wood bench on poured concrete wall  
4 Perforated cor ten steel feature wall  
5 Perforated metal pivot door and wall (secure courtyard)  
6 Rock boulder seats  
7 Prefab. concrete bench  
8 Bike racks  
9 Pergola  
10 Metal fence with swiss pearl panels  
11a concrete curb  
11b Leveled concrete curb  
12 Light column  
13 Light bollard  
14 Asphalt surface  
15 Concrete surface  
16 Wooden planters for gardening  
17 Security fence



Revision			
No	Description	Appr.	Date
1	SITE PLAN CONTROL	E.P.	6/06/2017



- Note :**
- It is the responsibility of the appropriate contractor or official to report any errors, omissions or discrepancies on this plan with actual site conditions to the Landscape Architect before proceeding with construction.
  - The Contractor must not cut down any existing vegetation without the approval of the Project Director.
  - Implantation of the works on site must be approved by the Project Director.
  - The Contractor must use the Cad file for implantation of all work. The contractor must verify the amounts specified in the schedule and notify the landscape architect of any errors, omissions or contradictions before the close of the bid.
  - Existing grades indicated on the plan come from the survey provided by the owner.
  - The contractor is to notify all utility companies and authorities prior to any excavation and ascertain locations of underground services.
  - The contractor is to reinstate all areas and items damaged as a result of construction activity.
  - The contractor is to comply with all pertinent codes and by-laws.
  - The contractor is to maintain a positive surface run-off throughout the entire construction period.
  - The Landscape Architect is not responsible for subsurface conditions.
  - The contractor is to stake the proposed location of all plant material in conjunction with the Landscape Architect prior to excavation.
  - All trees within 1m of underground utility trenches are to be excavated by hand.
  - Remove all protective wrapping from tree trunks after installation.
  - Staking of trees shall only be performed if necessary.
  - Ensure that mulch is pulled back a min. distance of 75mm from base of tree trunk.

**PROJET | PAYSAGE**  
24 Mont-Royal Ouest, Suite 801  
Montréal, QC, H2T 2S2  
514 949 7700



Project name  
**SALVATION ARMY**  
333 MONTREAL ROAD  
Ottawa, Ontario

Drawing title  
**GRADING AND DESCRIPTION PLAN**  
SHARED STREET AND SECURE COURTYARD  
LA-X0

Scale: 1:100

Drawn by: B.DALLAS	Sheet No. <b>LA-30</b>
Designed by: B.DALLAS / S.GALLANT	
Date: MAY 2017	
16-427	



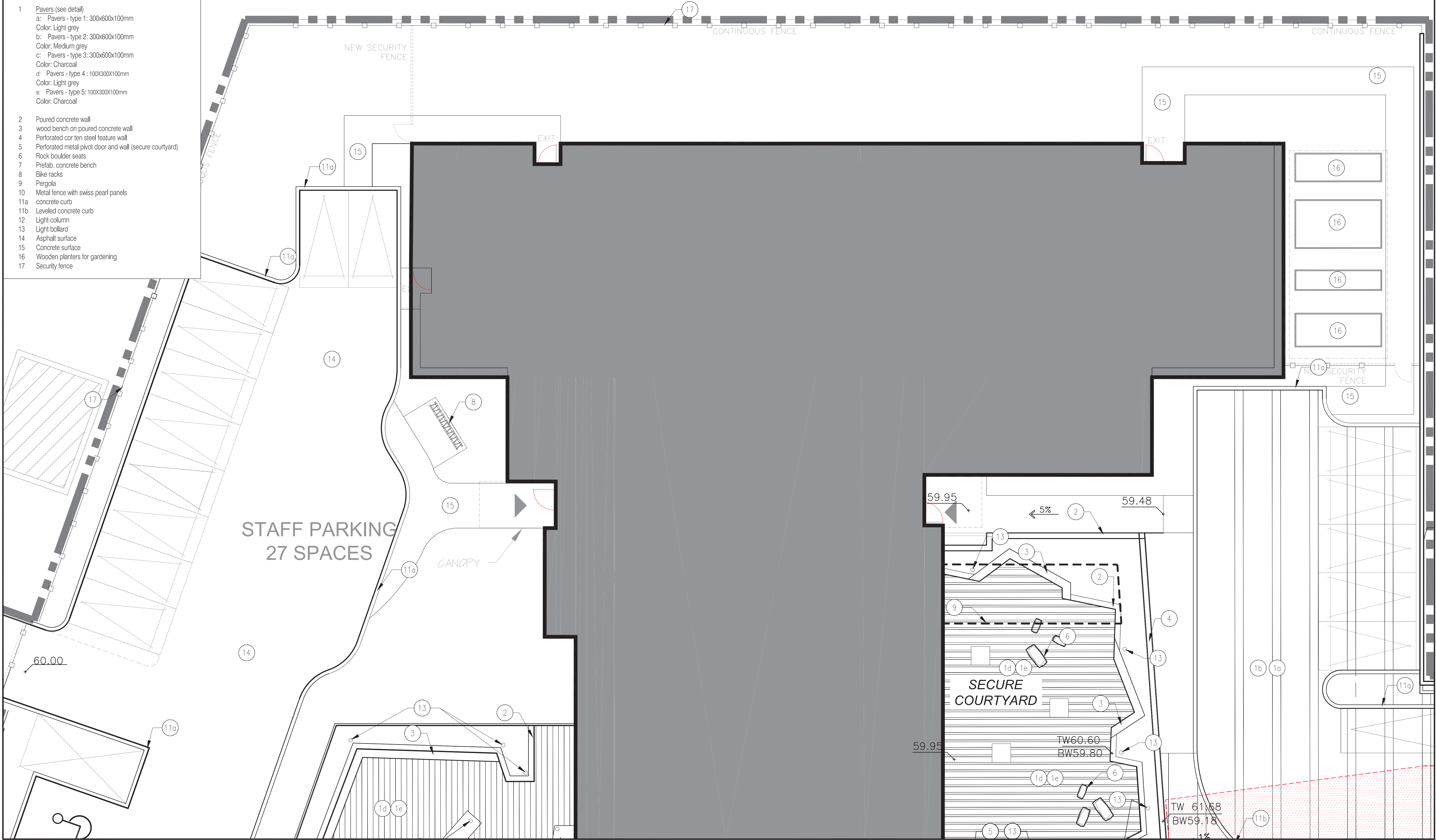
LEGEND

- Property limit
- Emergency vehicle trajectory
- Proposed elevations
- Proposed Slope

- TG Top of Grate
- TC Top of Curb
- BC Bottom of Curb
- TW Top of wall
- BW Bottom of wall
- TB Top of Bank
- BB Bottom of Bank
- HP High Point
- TD Trench Drain

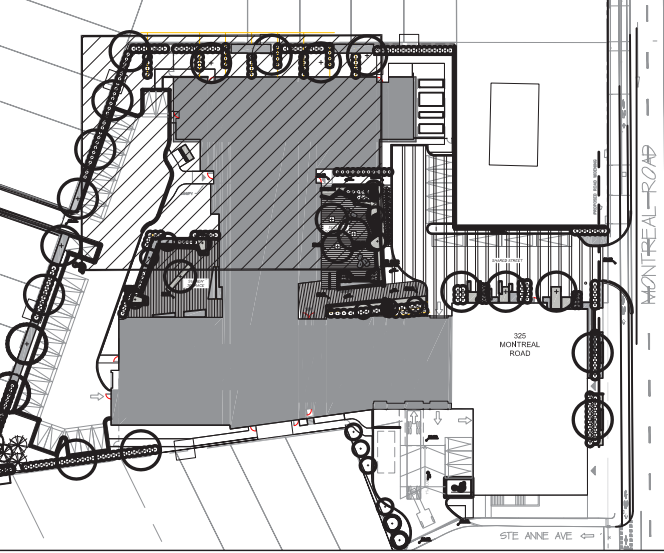
Plan's Details List

- Description
- 1 Pavers (see detail)
- a: Pavers - type 1: 300x600x100mm
- Color: Light grey
- b: Pavers - type 2: 300x600x100mm
- Color: Medium grey
- c: Pavers - type 3: 300x600x100mm
- Color: Charcoal
- d: Pavers - type 4: 100x300x100mm
- Color: Light grey
- e: Pavers - type 5: 100x300x100mm
- Color: Charcoal
- 2 Poured concrete wall
- 3 wood bench on poured concrete wall
- 4 Perforated cor ten steel feature wall
- 5 Perforated metal pivot door and wall (secure courtyard)
- 6 Rock boulder seats
- 7 Prefab. concrete bench
- 8 Bike racks
- 9 Pergola
- 10 Metal fence with swiss pearl panels
- 11a concrete curb
- 11b Levelled concrete curb
- 12 Light column
- 13 Light bollard
- 14 Asphalt surface
- 15 Concrete surface
- 16 Wooden planters for gardening
- 17 Security fence



Revision			
No	Description	Appr.	Date
1	SITE PLAN CONTROL	E.P.	6/06/2017

KEY PLAN



Note :

- It is the responsibility of the appropriate contractor or official to report any errors, omissions or discrepancies on this plan with actual site conditions to the Landscape Architect before proceeding with construction.
- The Contractor must not cut down any existing vegetation without the approval of the Project Director.
- Implantation of the works on site must be approved by the Project Director.
- The Contractor must use the Cad file for implantation of all work.The contractor must verify the amounts specified in the schedule and notify the landscape architect of any errors, omissions or contradictions before the close of the bid.
- Existing grades indicated on the plan come from the survey provided by the owner.
- The contractor is to notify all utility companies and authorities prior to any excavation and ascertain locations of underground services.
- The contractor is to reinstate all areas and items damaged as a result of construction activity.
- The contractor is to comply with all pertinent codes and by-laws.
- The contractor is to maintain a positive surface run-off throughout the entire construction period.
- The Landscape Architect is not responsible for subsurface conditions.
- The contractor is to stake the proposed location of all plant material in conjunction with the Landscape Architect prior to excavation.
- All trees within 1m of underground utility trenches are to be excavated by hand.
- Remove all protective wrapping from tree trunks after installation.
- Staking of trees shall only be performed if necessary.
- Ensure that mulch is pulled back a min. distance of 75mm from base of tree trunk.

PROJET | PAYSAGE

24 Mont-Royal Ouest, Suite 801  
Montréal, QC, H2T 2S2  
514 849 7700

Professional seal



Project name

SALVATION ARMY  
333 MONTREAL ROAD  
Ottawa, Ontario

Drawing title

GRADING AND DESCRIPTION PLAN  
NORTH AREA AND PARKING  
LA-X1

SCALE 1:100

Drawn by:

B.DALLAS

Designed by :

B.DALLAS / S.GALLANT

Date :

MAY 2017

Sheet No.

LA-31

16-427



LEGEND

- Property limit
- Emergency vehicle trajectory
- Proposed elevations
- Proposed Slope

TG Top of Grate  
TC Top of Curb  
BC Bottom of Curb  
TW Top of wall  
BW Bottom of wall  
TB Top of Bank  
BB Bottom of Bank  
HP High Point  
TD Trench Drain

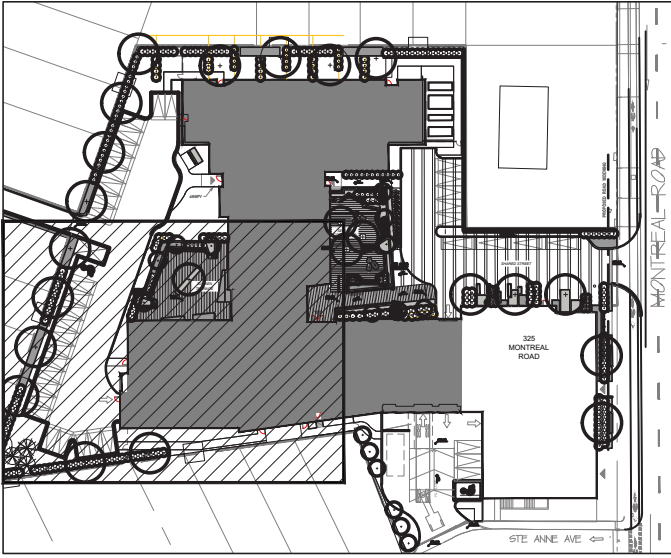
Plan's Details List

- Description
- 1 Pavers (see detail)  
a: Pavers - type 1: 300x600x100mm  
Color: Light grey  
b: Pavers - type 2: 300x600x100mm  
Color: Medium grey  
c: Pavers - type 3: 300x600x100mm  
Color: Charcoal  
d: Pavers - type 4: 100x300x100mm  
Color: Light grey  
e: Pavers - type 5: 100x300x100mm  
Color: Charcoal
- 2 Poured concrete wall  
3 wood bench on poured concrete wall  
4 Perforated cor ten steel feature wall  
5 Perforated metal pivot door and wall (secure courtyard)  
6 Rock boulder seats  
7 Prefab. concrete bench  
8 Bike racks  
9 Pergola  
10 Metal fence with swiss pearl panels  
11a concrete curb  
11b Leveled concrete curb  
12 Light column  
13 Light bollard  
14 Asphalt surface  
15 Concrete surface  
16 Wooden planters for gardening  
17 Security fence



Revision			
No.	Description	Appr.	Date
1	SITE PLAN CONTROL	E.P.	6/06/2017

KEY PLAN



Note :

- It is the responsibility of the appropriate contractor or official to report any errors, omissions or discrepancies on this plan with actual site conditions to the Landscape Architect before proceeding with construction.
- The Contractor must not cut down any existing vegetation without the approval of the Project Director.
- Implantation of the works on site must be approved by the Project Director.
- The Contractor must use the Cad file for implantation of all work. The contractor must verify the amounts specified in the schedule and notify the landscape architect of any errors, omissions or contradictions before the close of the bid.
- Existing grades indicated on the plan come from the survey provided by the owner.
- The contractor is to notify all utility companies and authorities prior to any excavation and ascertain locations of underground services.
- The contractor is to reinstate all areas and items damaged as a result of construction activity.
- The contractor is to comply with all pertinent codes and by-laws.
- The contractor is to maintain a positive surface run-off throughout the entire construction period.
- The Landscape Architect is not responsible for subsurface conditions.
- The contractor is to stake the proposed location of all plant material in conjunction with the Landscape Architect prior to excavation.
- All trees within 1m of underground utility trenches are to be excavated by hand.
- Remove all protective wrapping from tree trunks after installation.
- Staking of trees shall only be performed if necessary.
- Ensure that mulch is pulled back a min. distance of 75mm from base of tree trunk.

PROJET | PAYSAGE

24 Mont-Royal Ouest, Suite 801  
Montréal, QC, H2T 2S2  
514 949 7700

Professional seal



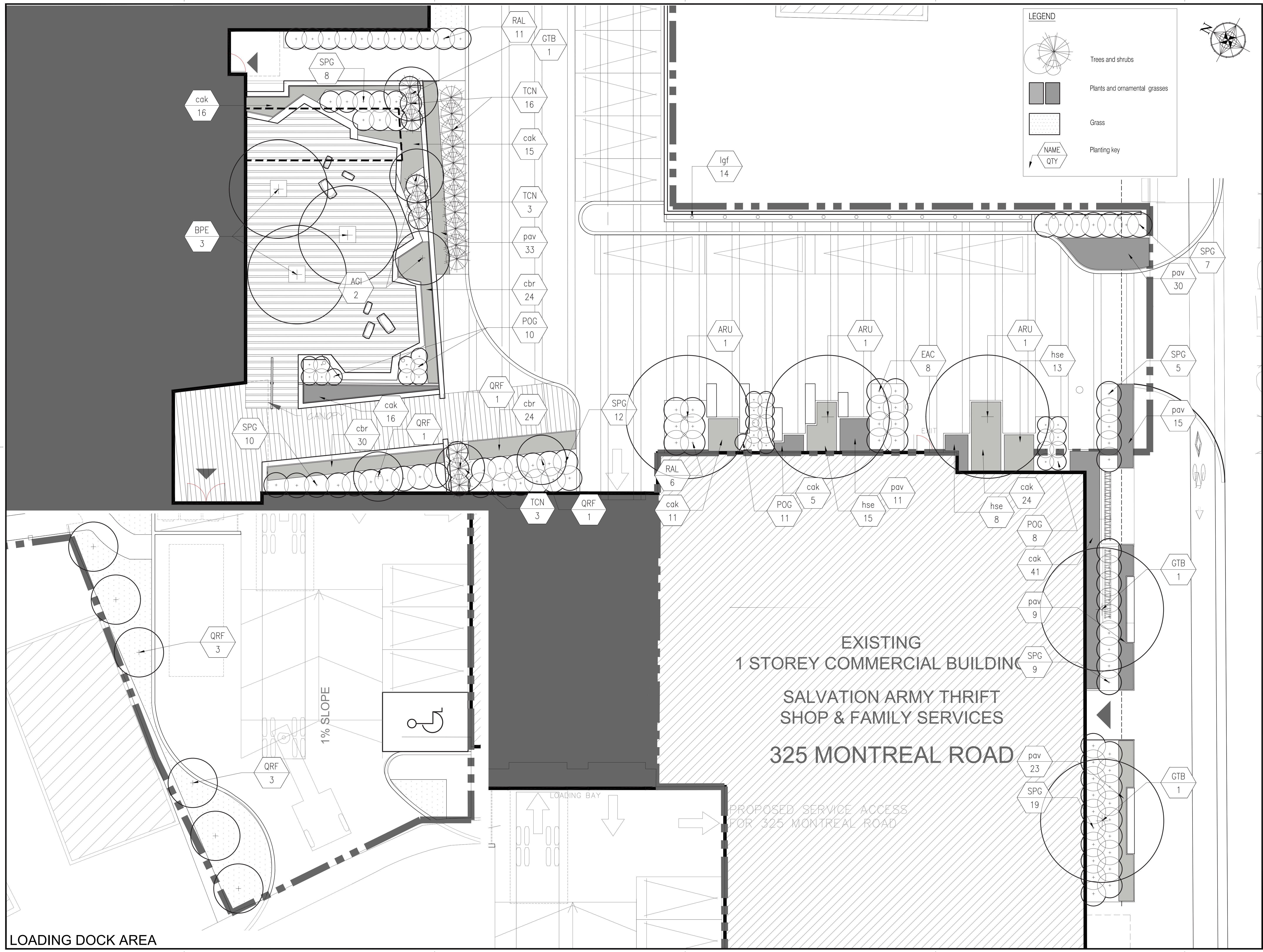
Project name  
SALVATION ARMY  
333 MONTREAL ROAD  
Ottawa, Ontario

Drawing title  
GRADING AND DESCRIPTION PLAN  
SUNKEN TERRACE AND WEST AREA  
LA-X2

SCALE 1:100

Drawn by: B.DALLAS	Sheet No.
Designed by : B.DALLAS / S.GALLANT	LA-32
Date : MAY 2017	
16-427	





Revision			
No	Description	Appr.	Date
1	SITE PLAN CONTROL	E.P.	6/06/2017

**KEY PLAN**

**Note :**

- It is the responsibility of the appropriate contractor or official to report any errors, omissions or discrepancies on this plan with actual site conditions to the Landscape Architect before proceeding with construction.
- The Contractor must not cut down any existing vegetation without the approval of the Project Director.
- Implantation of the works on site must be approved by the Project Director.
- The Contractor must use the Cad file for implantation of all work. The contractor must verify the amounts specified in the schedule and notify the landscape architect of any errors, omissions or contradictions before the close of the bid.
- Existing grades indicated on the plan come from the survey provided by the owner.
- The contractor is to notify all utility companies and authorities prior to any excavation and ascertain locations of underground services.
- The contractor is to reinstate all areas and items damaged as a result of construction activity.
- The contractor is to comply with all pertinent codes and by-laws.
- The contractor is to maintain a positive surface run-off throughout the entire construction period.
- The Landscape Architect is not responsible for subsurface conditions.
- The contractor is to stake the proposed location of all plant material in conjunction with the Landscape Architect prior to excavation.
- All trees within 1m of underground utility trenches are to be excavated by hand.
- Remove all protective wrapping from tree trunks after installation.
- Staking of trees shall only be performed if necessary.
- Ensure that mulch is pulled back a min. distance of 75mm from base of tree trunk.

**PROJET | PAYSAGE**

24 Mont-Royal Ouest, Suite 801  
Montréal, QC, H2T 2S2  
514 949 7700

Professional seal

Project name

SALVATION ARMY  
BOOTH CENTRE  
Ottawa, Ontario

Drawing title

PLANTING PLAN  
SHARED STREET AND SECURE COURTYARD  
LA-X0

SCALE 1:100

Drawn by:  
B.DALLAS

Designed by:  
B.DALLAS / S.GALLANT

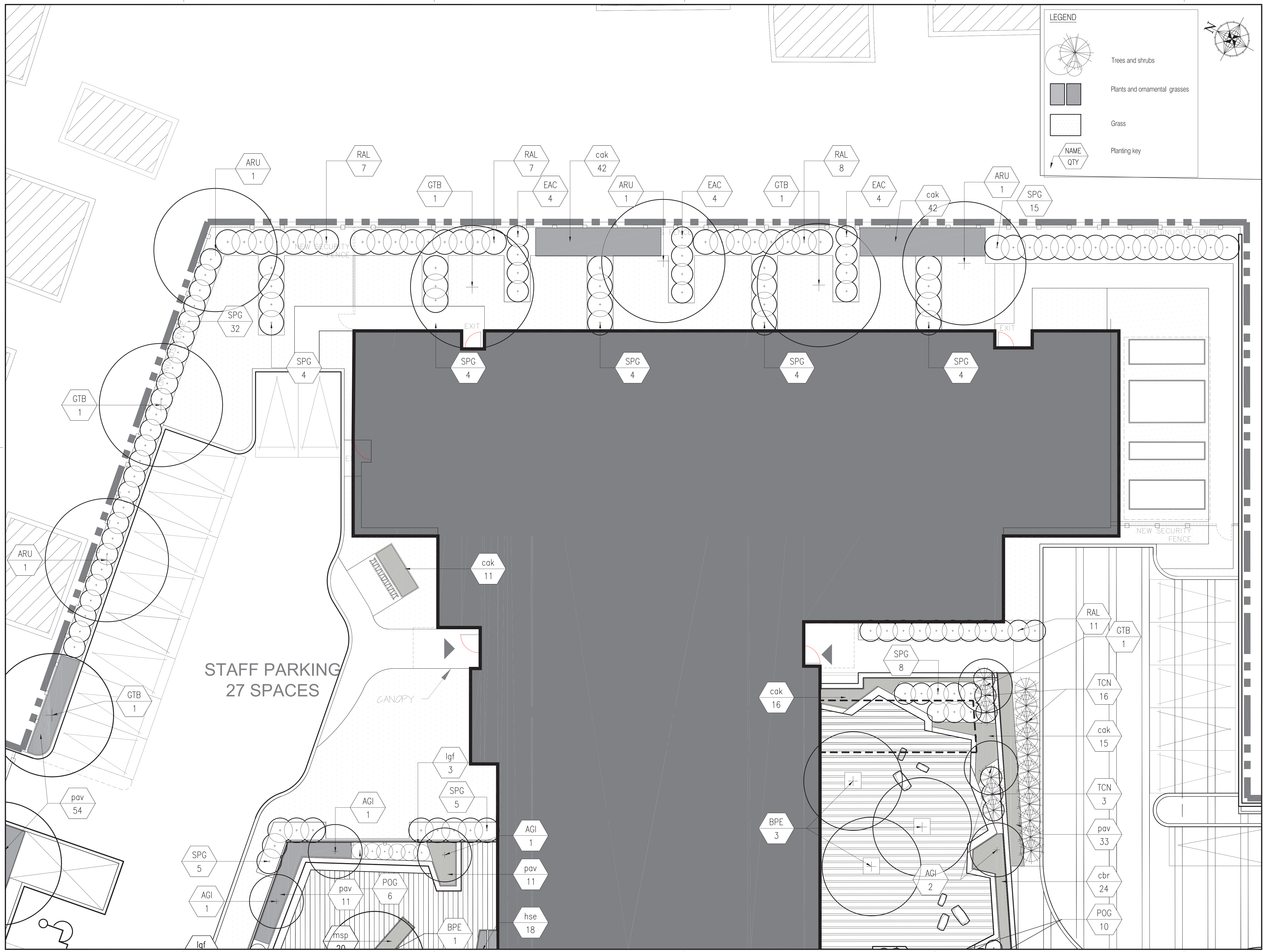
Date:  
MAY 2017

16-427

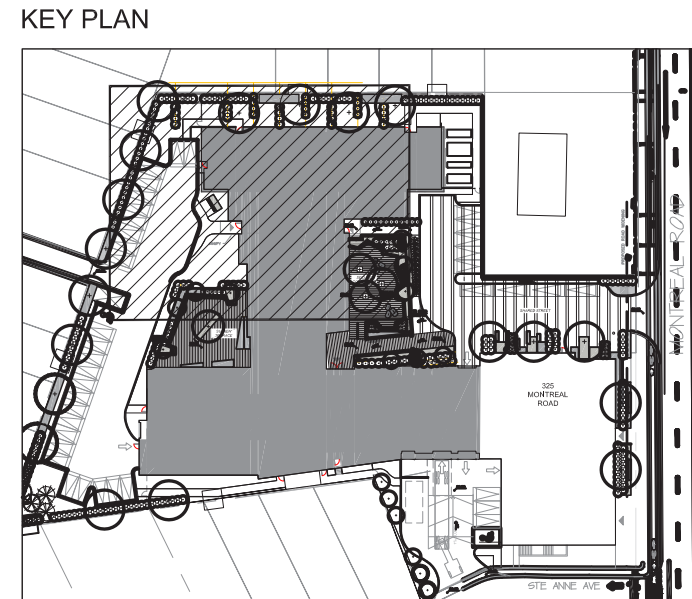
Sheet No.

LA-40





Revision			
No	Description	Appr.	Date
1	SITE PLAN CONTROL	E.P.	6/06/2017



- Note :**
- It is the responsibility of the appropriate contractor or official to report any errors, omissions or discrepancies on this plan with actual site conditions to the Landscape Architect before proceeding with construction.
  - The Contractor must not cut down any existing vegetation without the approval of the Project Director.
  - Implantation of the works on site must be approved by the Project Director.
  - The Contractor must use the Cad file for implantation of all work. The contractor must verify the amounts specified in the schedule and notify the landscape architect of any errors, omissions or contradictions before the close of the bid.
  - Existing grades indicated on the plan come from the survey provided by the owner.
  - The contractor is to notify all utility companies and authorities prior to any excavation and ascertain locations of underground services.
  - The contractor is to reinstate all areas and items damaged as a result of construction activity.
  - The contractor is to comply with all pertinent codes and by-laws.
  - The contractor is to maintain a positive surface run-off throughout the entire construction period.
  - The Landscape Architect is not responsible for subsurface conditions.
  - The contractor is to stake the proposed location of all plant material in conjunction with the Landscape Architect prior to excavation.
  - All trees within 1m of underground utility trenches are to be excavated by hand.
  - Remove all protective wrapping from tree trunks after installation.
  - Staking of trees shall only be performed if necessary.
  - Ensure that mulch is pulled back a min. distance of 75mm from base of tree trunk.

**PROJET | PAYSAGE**  
24 Mont-Royal Ouest, Suite 801  
Montréal, QC, H2T 2S2  
514 849 7700



Project name  
**SALVATION ARMY  
333 MONTREAL ROAD  
Ottawa, Ontario**

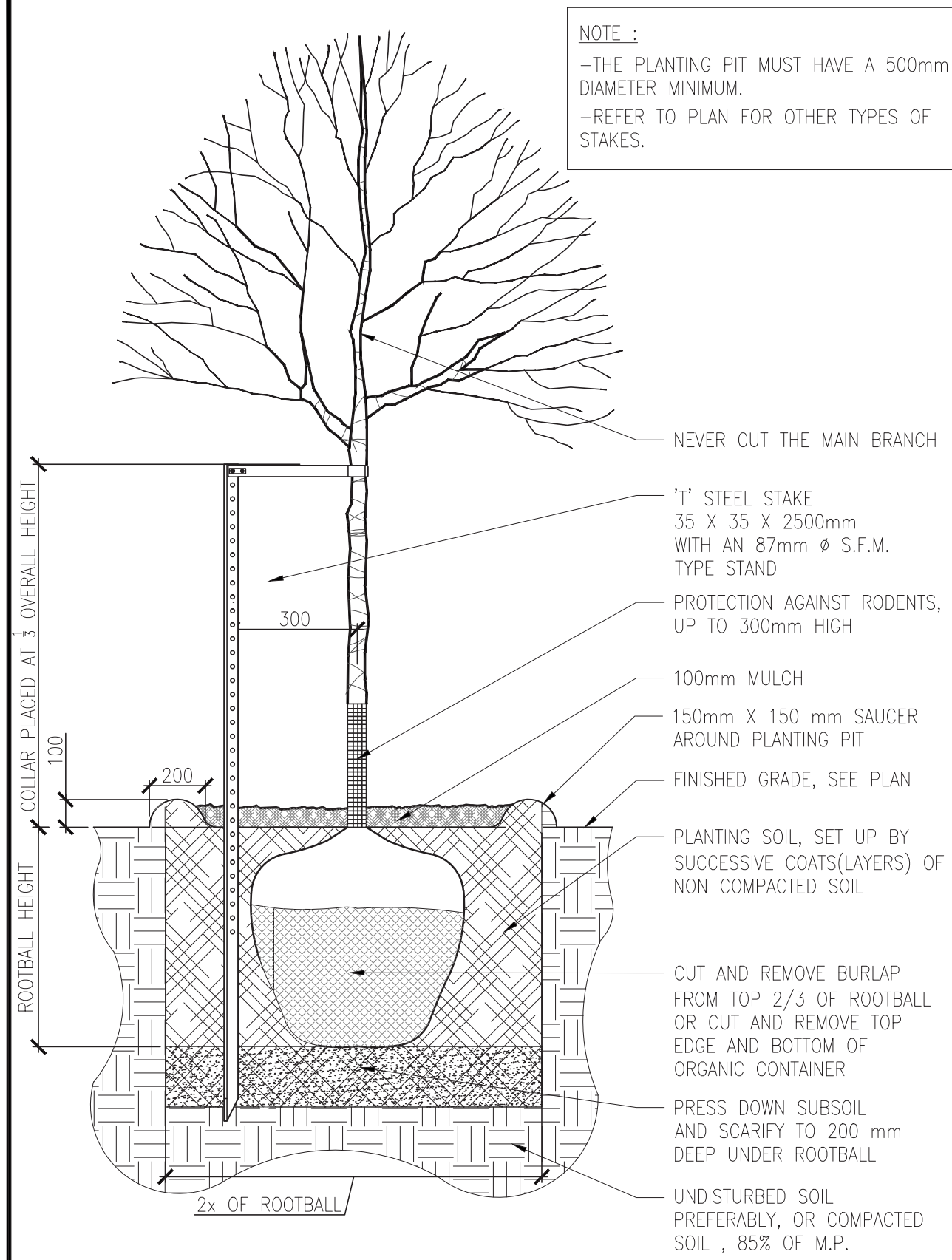
Drawing title  
**PLANTING PLAN  
NORTH AREA AND PARKING  
LA-X1**

Drawn by: B.DALLAS	Sheet No. <b>LA-41</b>
Designed by : B.DALLAS / S.GALLANT	
Date : MAY 2017	
16-427	

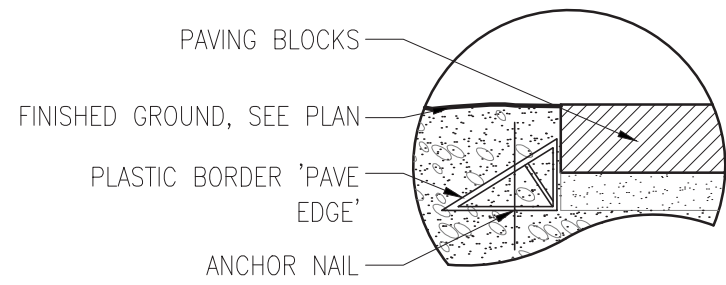
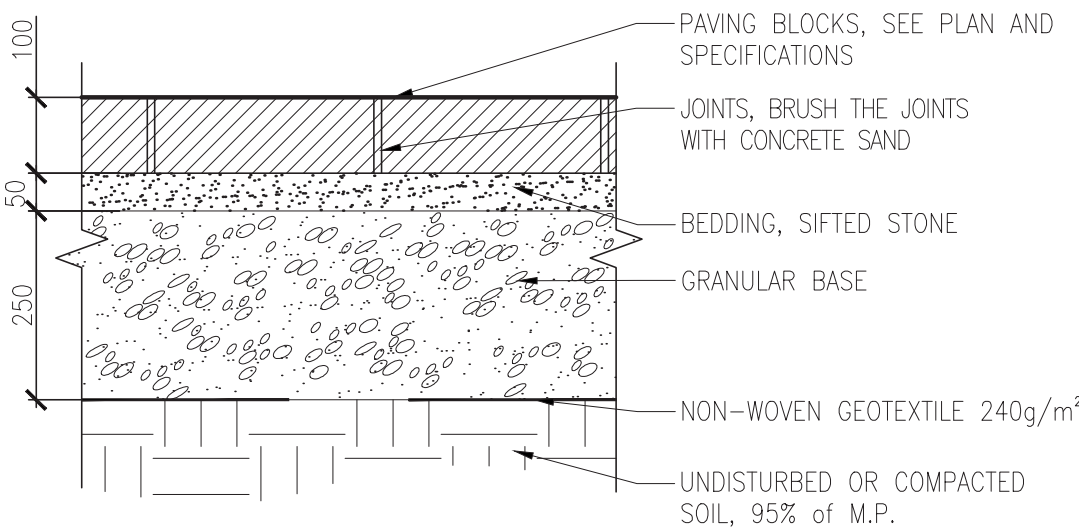




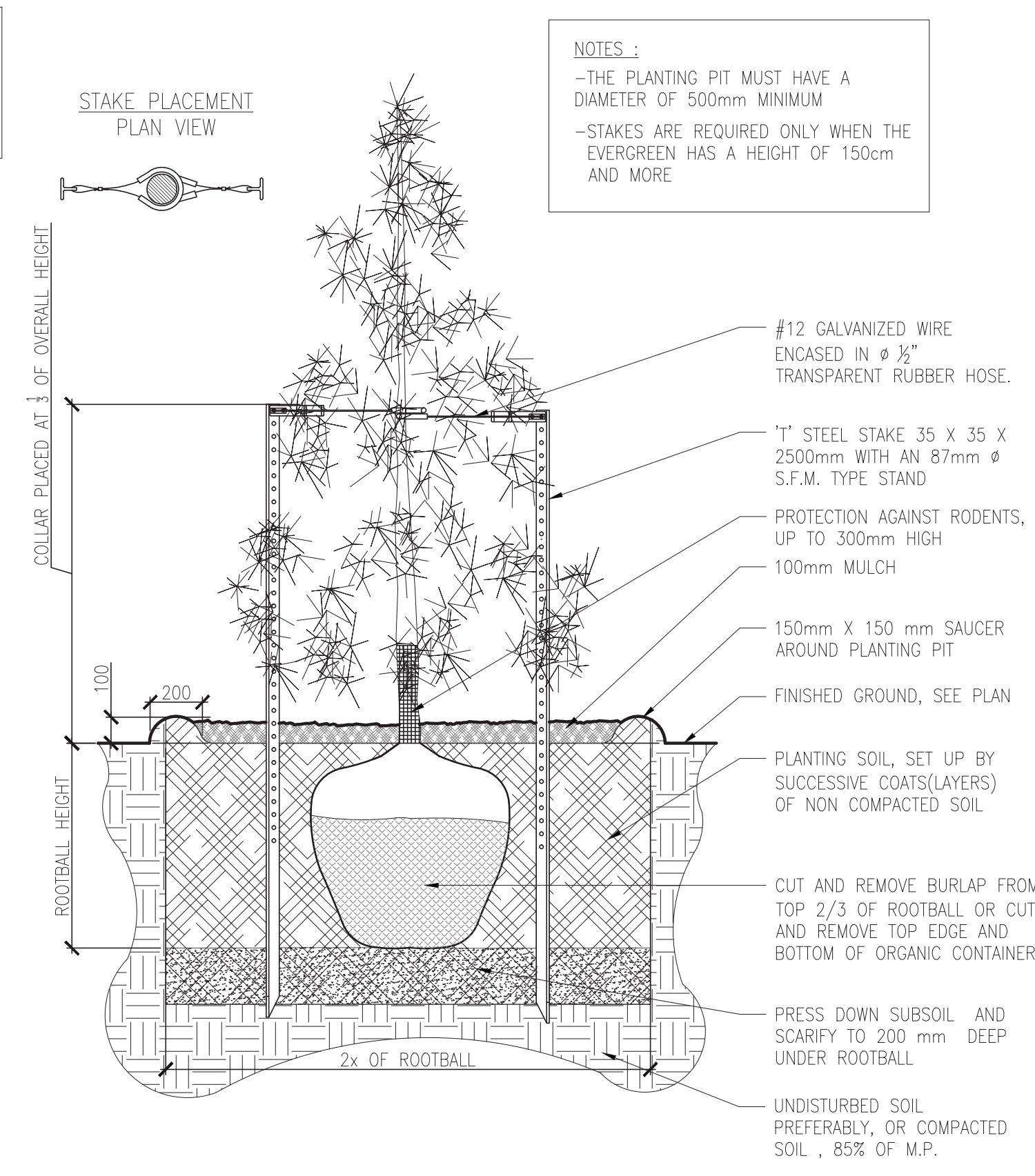




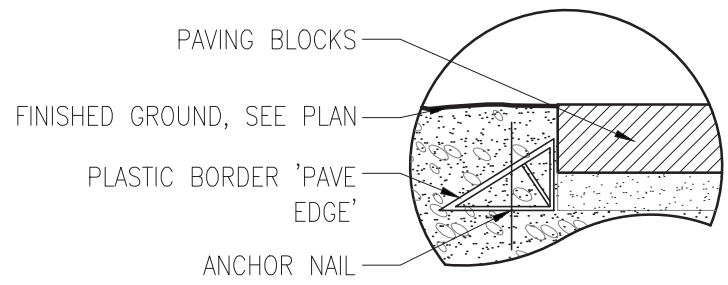
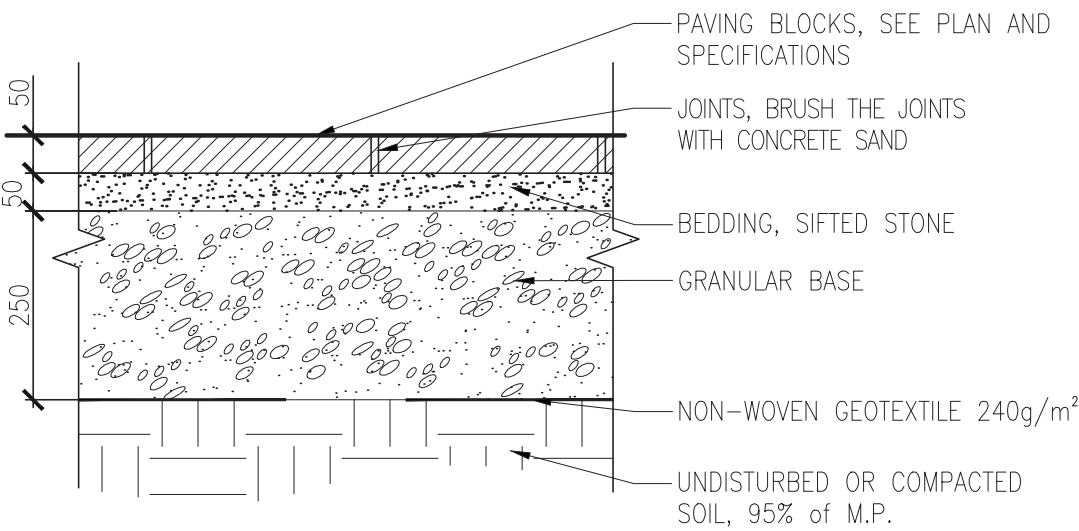
DECIDUOUS TREE PLANTING  
Scale 1:20



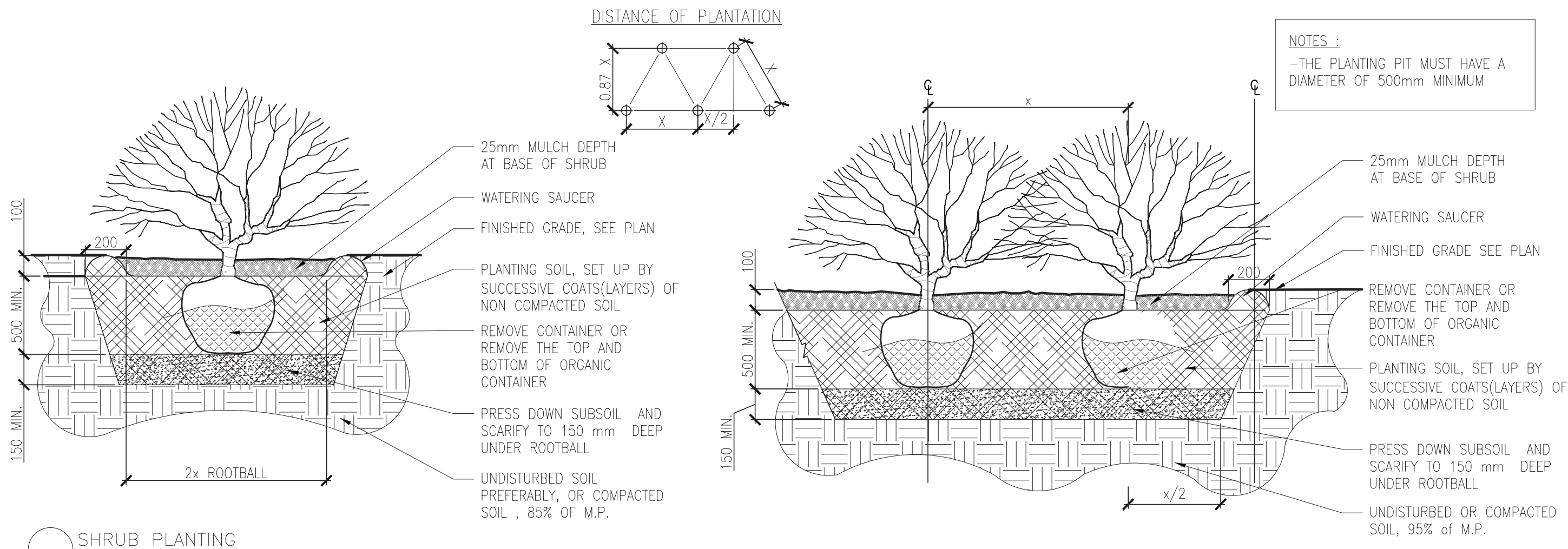
HEAVY DUTY PAVERS FOR SHARED STREET  
Scale 1:10



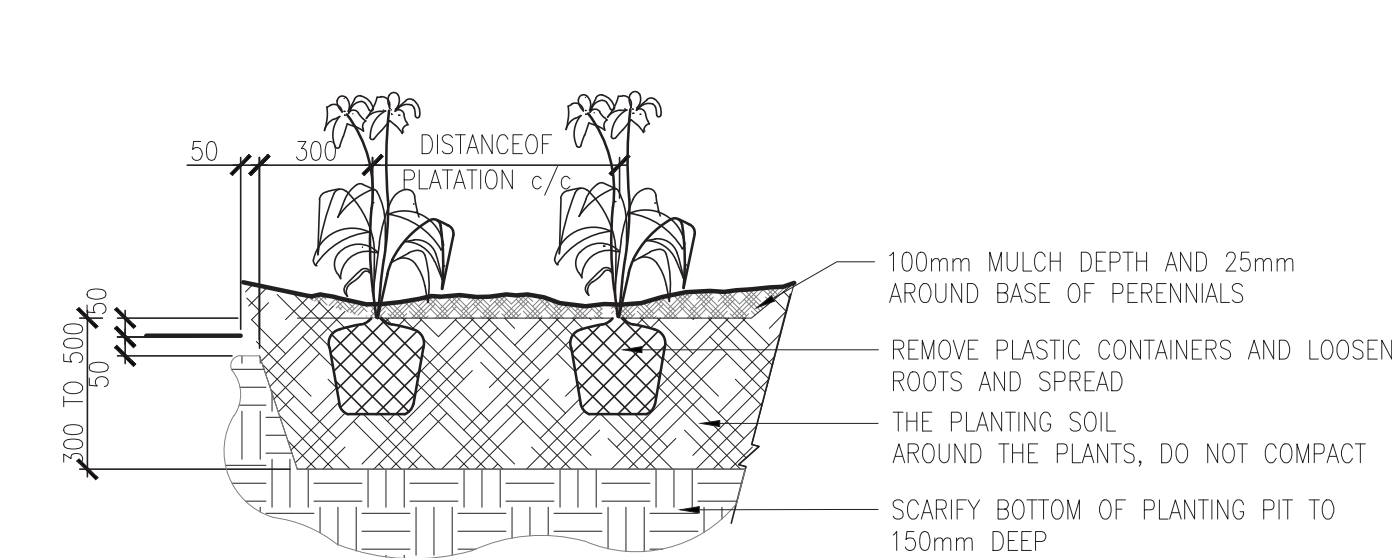
EVERGREEN TREE PLANTING  
Scale 1:20



LIGHT DUTY PAVERS  
Scale 1:10



SHRUB PLANTING  
Scale 1:20



PERENNIAL PLANTATION  
Scale 1:20



Revision			
No	Description	Appr.	Date
1	SITE PLAN CONTROL	E.P.	6/06/2017

**Note :**

- It is the responsibility of the appropriate contractor or official to report any errors, omissions or discrepancies on this plan with actual site conditions to the Landscape Architect before proceeding with construction.
- The Contractor must not cut down any existing vegetation without the approval of the Project Director.
- Implantation of the works on site must be approved by the Project Director.
- The Contractor must use the Cad file for implantation of all work. The contractor must verify the amounts specified in the schedule and notify the landscape architect of any errors, omissions or contradictions before the close of the bid.
- Existing grades indicated on the plan come from the survey provided by the owner.
- The contractor is to notify all utility companies and authorities prior to any excavation and ascertain locations of underground services.
- The contractor is to reinstate all areas and items damaged as a result of construction activity.
- The contractor is to comply with all pertinent codes and by-laws.
- The contractor is to maintain a positive surface run-off throughout the entire construction period.
- The Landscape Architect is not responsible for subsurface conditions.
- The contractor is to stake the proposed location of all plant material in conjunction with the Landscape Architect prior to excavation.
- All trees within 1m of underground utility trenches are to be excavated by hand.
- Remove all protective wrapping from tree trunks after installation.
- Staking of trees shall only be performed if necessary.
- Ensure that mulch is pulled back a min. distance of 75mm from base of tree trunk.

**PROJET | PAYSAGE**

24 Mont-Royal Ouest, Suite 801  
Montréal, QC, H2T 2S2  
514 949 7700

Professional seal



Project name  
**SALVATION ARMY**  
**333 MONTREAL ROAD**  
**Ottawa, Ontario**

Drawing title  
**CONSTRUCTION DETAILS**

SCALE: AS SHOWN

Drawn by: B.DALLAS	Sheet No.
Designed by : B.DALLAS / S.GALLANT	LA-50
Date : MAY 2017	
16-427	