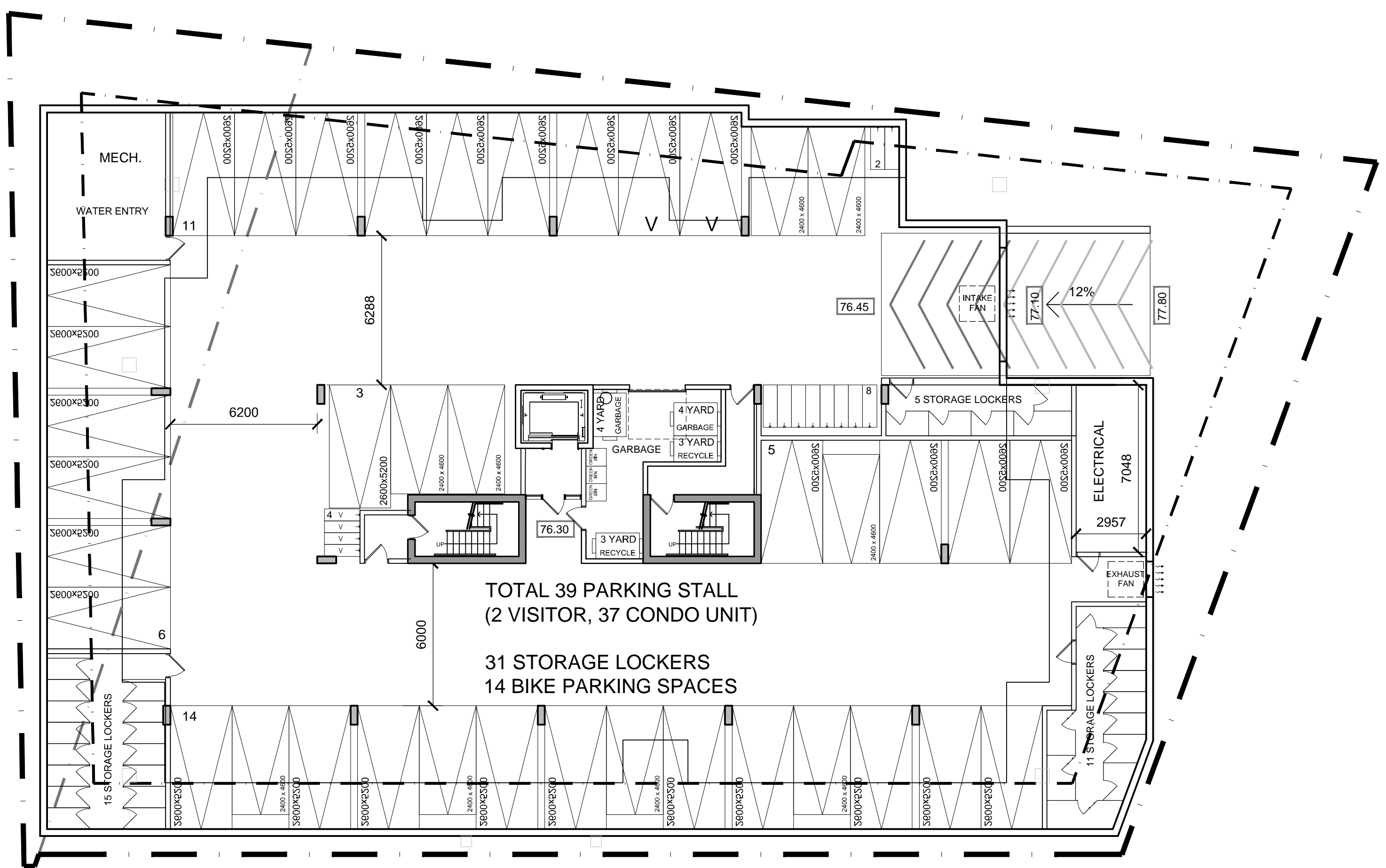


IT IS THE RESPONSIBILITY OF THE APPROPRIATE CONTRACTOR TO CHECK AND VERIFY ALL DIMENSIONS ON SITE AND TO REPORT ALL ERRORS AND/OR OMISSIONS TO THE ARCHITECT.  
 ALL CONTRACTORS MUST COMPLY WITH ALL PERTINENT CODES AND BY-LAWS.  
 THIS DRAWING MAY NOT BE USED FOR CONSTRUCTION UNTIL SIGNED BY THE ARCHITECT.  
 DO NOT SCALE DRAWINGS.  
 COPYRIGHT RESERVED.

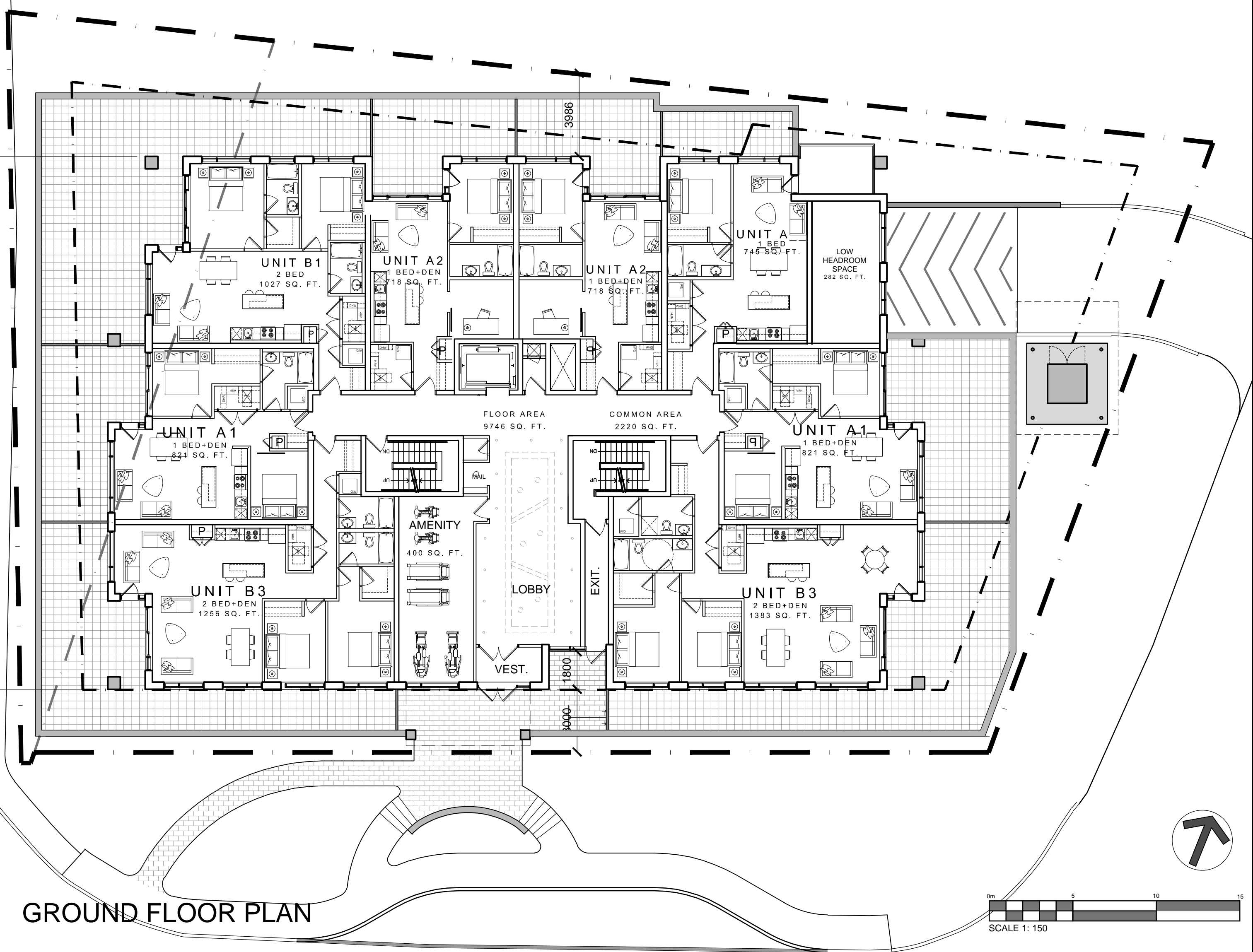
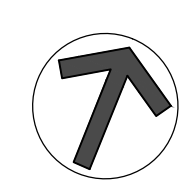
**NOTATION SYMBOLS:**

- (N) INDICATES DRAWING NOTES, LISTED ON EACH SHEET.
- (A) INDICATES ASSEMBLY TYPE; REFER TO TYPICAL ASSEMBLIES SCHEDULED.
- (W) INDICATES WINDOW TYPE; REFER TO WINDOW ELEVATIONS AND DETAILS ON A900 SERIES.
- (D) INDICATES DOOR TYPE; REFER TO DOOR SCHEDULE AND DETAILS ON A900 SERIES.
- (-)-DETAIL NUMBER
- (T) TITLE
- (S) SHEET
- (R) DETAIL REFERENCE PAGE
- (C) DETAIL CROSS REFERENCE PAGE

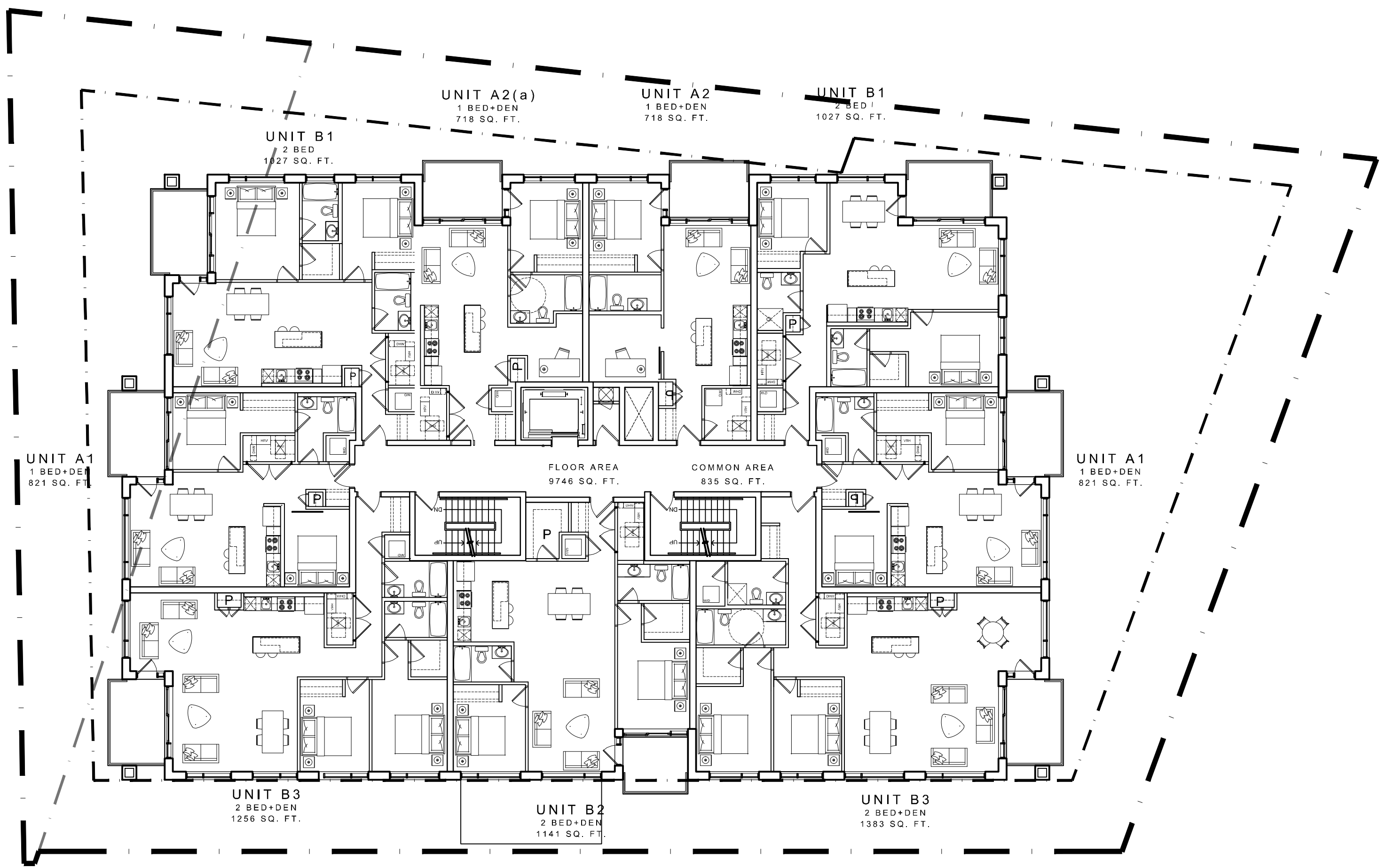


FLOOR AREA  
 14520 sq. ft.

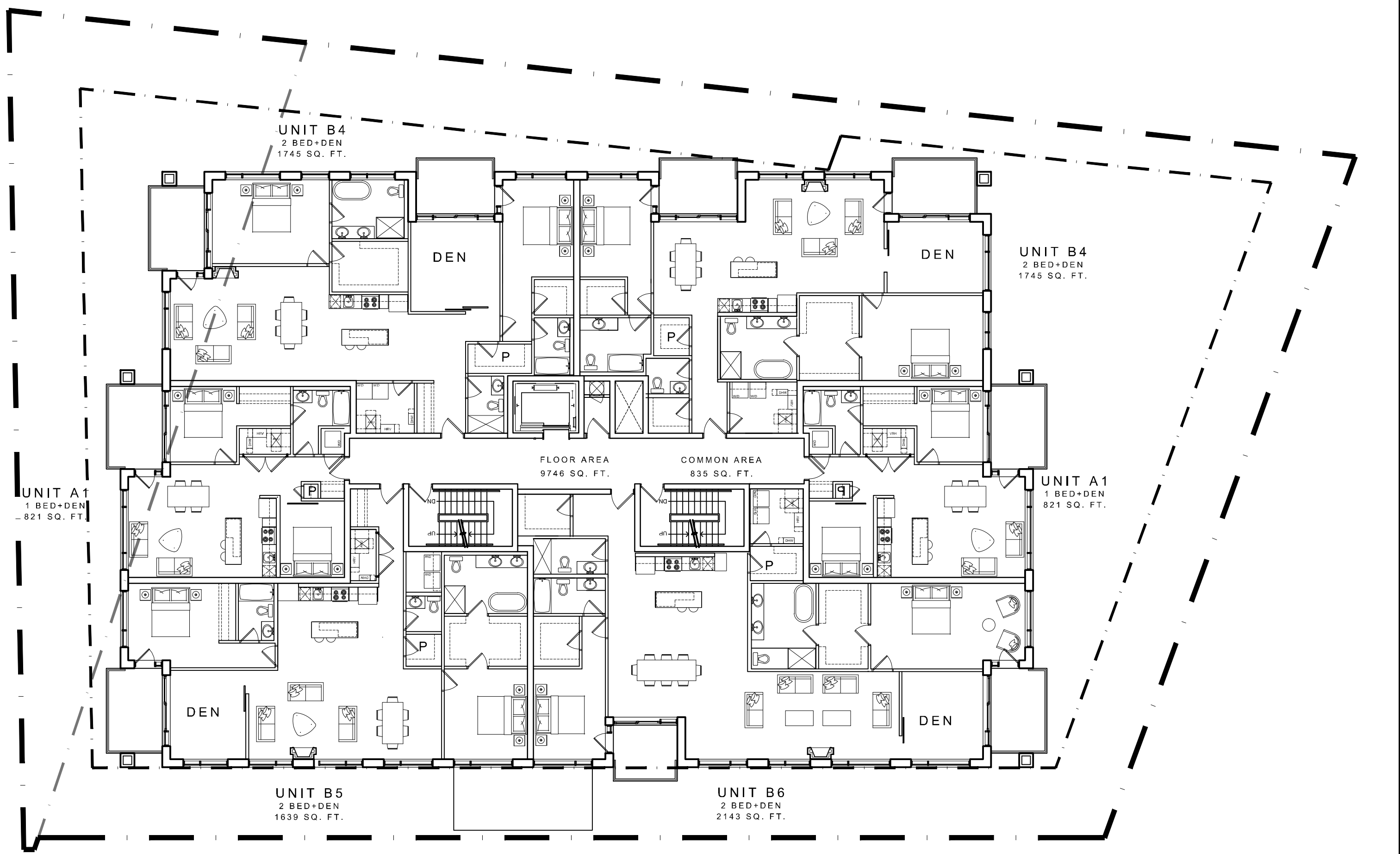
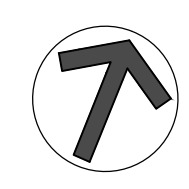
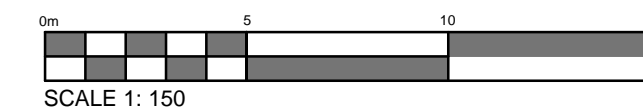
P1 PARKING LEVEL



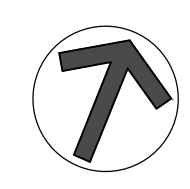
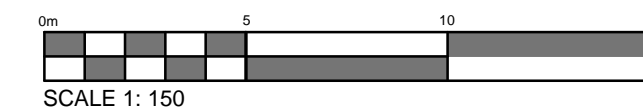
GROUND FLOOR PLAN




2nd & 3rd FLOOR PLAN




4th FLOOR PLAN



ISSUED FOR SITE PLAN CONTROL	Apr. 04, 17
ISSUED FOR DESIGN CONCEPT	Nov. 11, 16
No. DESCRIPTION	DATE

ARCHITECT SEAL:  
  
 ARCHITECTS  
 RODERICK LAHEY  
 LICENCE # 3725  
 SEAL DATE: STAMP DATE

NORTH ARROW:  


**280 Herzberg Development Corp.**

ARCHITECT:  
**RODERICK LAHEY ARCHITECT INC**  
 56 Beech Street, Ottawa, Ontario K1S 3J6  
 1.613.724.9932 1.613.724.1209 www.roderricklahey.ca

PROJECT TITLE:  
**280 HERZBERG**

OTTAWA ONTARIO

SHEET TITLE:  
**FLOOR PLANS**

DRAWN:  
 RV

CHECKED:  
 R.L.A.

SCALE:  
 1:150

SHEET No.  
**A-01**

PROJECT No.  
 1610